

SURVEY CONTROL SHEET

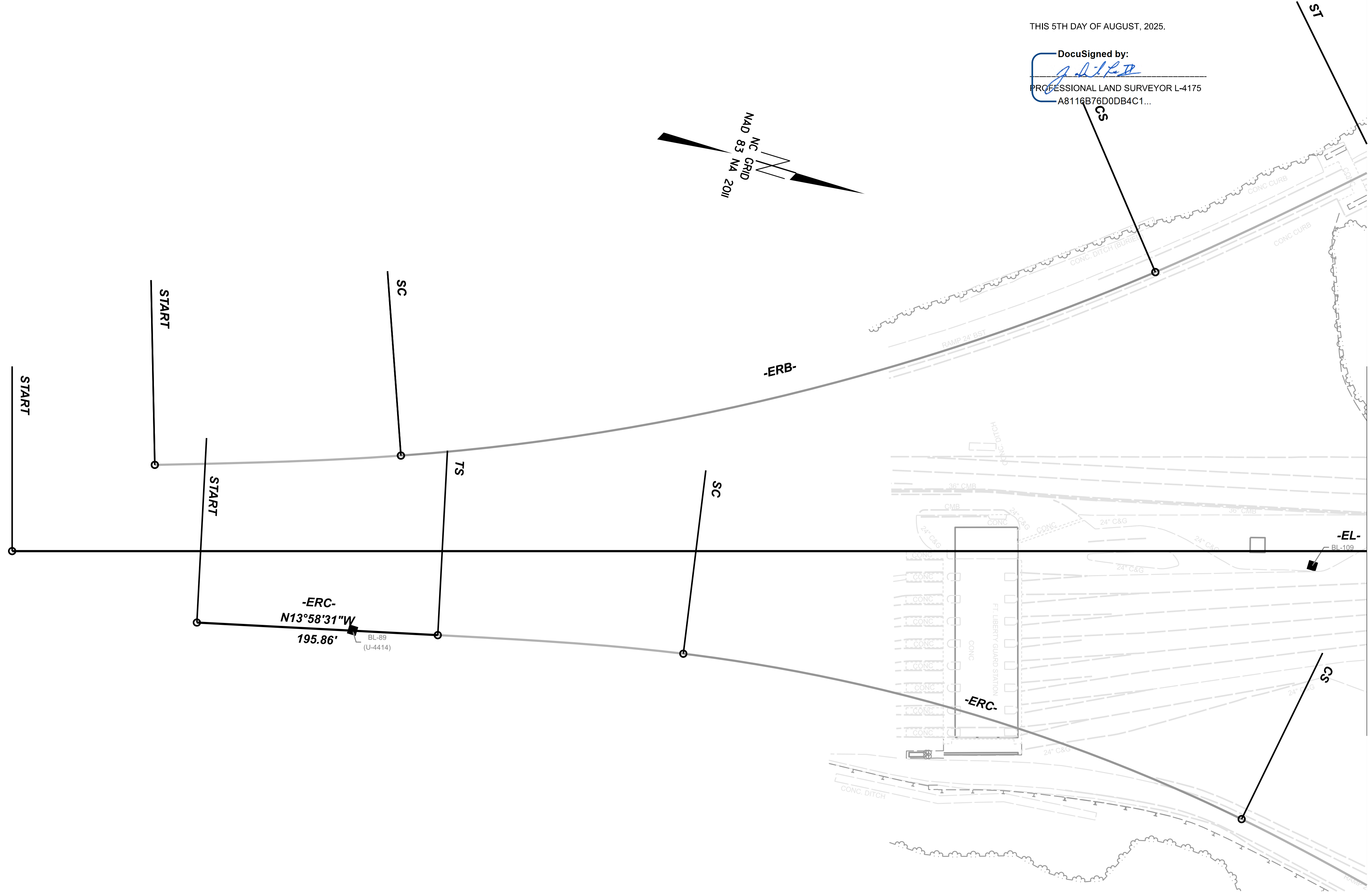
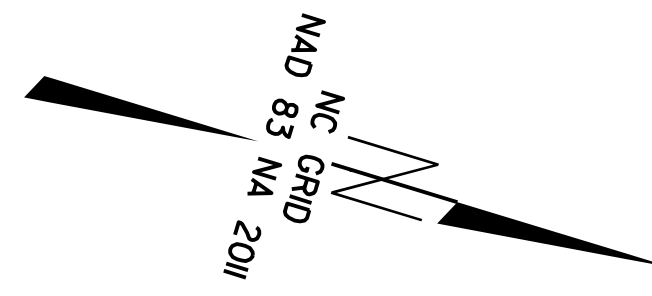
W/EXISTING CENTERLINE ALIGNMENTS PRIOR TO CONSTRUCTION

THIS CONTROL IS TO ONLY BE USED FOR PROJECT 49218.26
-L- STA. 13+98.79 TO STA. 28+95.36; -Y- STA. 26+32.10 TO STA. 27+81.57

I CERTIFY THAT THE BASELINE CONTROL FOR THIS PROJECT WAS COMPLETED UNDER MY DIRECT AND RESPONSIBLE CHARGE FROM AN ACTUAL SURVEY MADE UNDER MY SUPERVISION; THAT ALL HORIZONTAL CLOSURES HAD A MINIMUM RATIO OF PRECISION OF 1:20,000 (CLASS AA) AND VERTICAL ACCURACY TO CLASS A. FIELD WORK WAS PERFORMED FROM 5/30/24 TO 5/31/24, AND ALL COORDINATES ARE BASED ON NAD 83/NA 2011 AND ALL ELEVATIONS ARE BASED ON NAVD 88; THAT THIS SURVEY WAS PERFORMED TO MEET THE REQUIREMENTS OF 21NCAC 56.1600 AS APPLICABLE.

THIS 5TH DAY OF AUGUST, 2025.

DocuSigned by:
[Signature]
PROFESSIONAL LAND SURVEYOR L-4175
A8116B76D0DB4C1...



BL-88 (U-4414)

-ERC-
N13°58'31"W
195.86'

BL-88 (U-4414)

MATCH LINE - STA 522+00.00 SEE SHEET RW02C-2



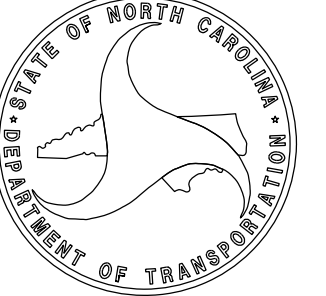
NOTES:

- 1. THE PROPOSED ALIGNMENT CONTROL DATA FOR THIS PROJECT HAS BEEN COMPILED FROM VARIOUS SOURCES. IF FURTHER INFORMATION REGARDING PROJECT CONTROL IS NEEDED, PLEASE CONTACT THE LOCATION AND SURVEYS UNIT.

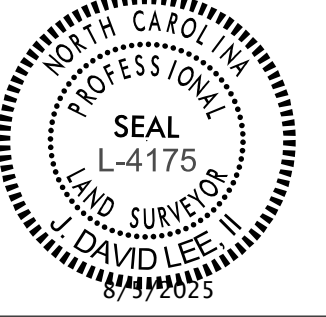
49218.26

R/W 02C-1

NORTH CAROLINA DEPARTMENT OF TRANSPORTATION



PROFESSIONAL LAND SURVEYOR



DOCUMENT NOT CONSIDERED FINAL UNLESS ALL SIGNATURES ARE COMPLETED

2024 STANDARD SPECIFICATIONS

TIP PROJECT: 49218.26
County: Cumberland

PREPARED FOR

LOCATION AND SURVEYS UNIT

PREPARED BY



350 PEE DEE AVE., SUITE 202 ALBEMARLE, NC 28001

SURVEY CONTROL SHEET

W/ EXISTING CENTERLINE ALIGNMENTS PRIOR TO CONSTRUCTION

I CERTIFY THAT THE BASELINE CONTROL FOR THIS PROJECT WAS COMPLETED UNDER MY DIRECT AND RESPONSIBLE CHARGE FROM AN ACTUAL SURVEY MADE UNDER MY SUPERVISION; THAT ALL HORIZONTAL CLOSURES HAD A MINIMUM RATIO OF PRECISION OF 1:20,000 (CLASS AA) AND VERTICAL ACCURACY TO CLASS A. FIELD WORK WAS PERFORMED FROM 5/30/24 TO 5/31/24, AND ALL COORDINATES ARE BASED ON NAD 83/NA 2011 AND ALL ELEVATIONS ARE BASED ON NAVD 88; THAT THIS SURVEY WAS PERFORMED TO MEET THE REQUIREMENTS OF 21NCAC 56.1600 AS APPLICABLE.

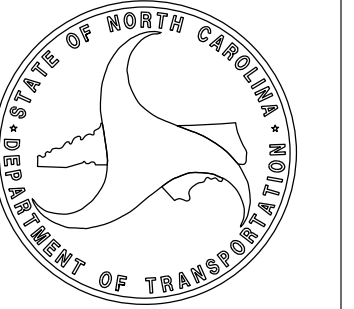
THIS 5TH DAY OF AUGUST, 2025.

DocuSigned by:
David Lee
PROFESSIONAL LAND SURVEYOR L-4175
A8116B76D0DB4C1...

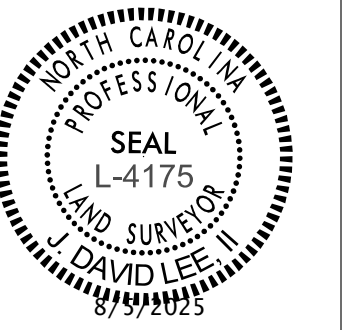
49218.26

R/W 02C-2

NORTH CAROLINA
DEPARTMENT
OF TRANSPORTATION



PROFESSIONAL LAND
SURVEYOR



DOCUMENT NOT CONSIDERED
FINAL UNLESS ALL SIGNATURES
ARE COMPLETED

2024 STANDARD
SPECIFICATIONS

TIP PROJECT: 49218.26

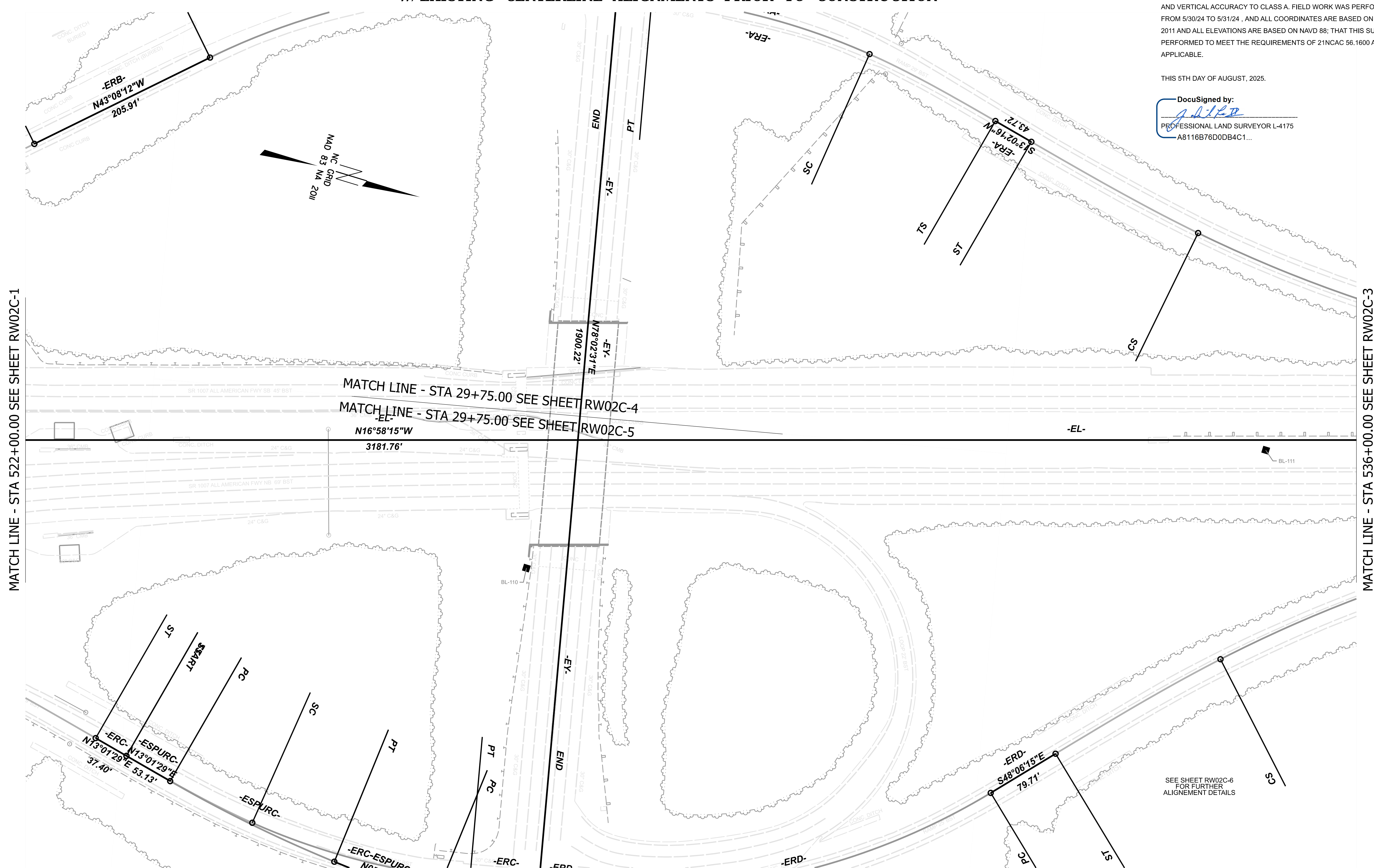
County: Cumberland

PREPARED FOR

LOCATION AND
SURVEYS UNIT

PREPARED BY

350 PEE DEE AVE.,
SUITE 202
ALBEMARLE, NC 27801



THIS CONTROL IS TO ONLY BE USED FOR PROJECT 49218.26
-L- STA. 13 + 98.79 TO STA. 28 + 95.36; -Y- STA. 26 + 32.10 TO STA. 27 + 81.57

NOTES:
1. THE PROPOSED ALIGNMENT CONTROL DATA FOR THIS PROJECT HAS BEEN COMPILED FROM VARIOUS SOURCES. IF FURTHER INFORMATION REGARDING PROJECT CONTROL IS NEEDED, PLEASE CONTACT THE LOCATION AND SURVEYS UNIT.

SEE SHEET RW02C-6
FOR FURTHER
ALIGNMENT DETAILS

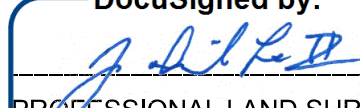
SURVEY CONTROL SHEET

W/EXISTING CENTERLINE ALIGNMENTS PRIOR TO CONSTRUCTION

THIS CONTROL IS TO ONLY BE USED FOR PROJECT 49218.26
-L- STA. 13 +98.79 TO STA. 28 +95.36; -Y- STA. 26 +32.10 TO STA. 27 +81.57

I CERTIFY THAT THE BASELINE CONTROL FOR THIS PROJECT WAS COMPLETED UNDER MY DIRECT AND RESPONSIBLE CHARGE FROM AN ACTUAL SURVEY MADE UNDER MY SUPERVISION; THAT ALL HORIZONTAL CLOSURES HAD A MINIMUM RATIO OF PRECISION OF 1:20,000 (CLASS AA) AND VERTICAL ACCURACY TO CLASS A. FIELD WORK WAS PERFORMED FROM 5/30/24 TO 5/31/24 , AND ALL COORDINATES ARE BASED ON NAD 83/NA 2011 AND ALL ELEVATIONS ARE BASED ON NAVD 88; THAT THIS SURVEY WAS PERFORMED TO MEET THE REQUIREMENTS OF 21NCAC 56.1600 AS APPLICABLE.

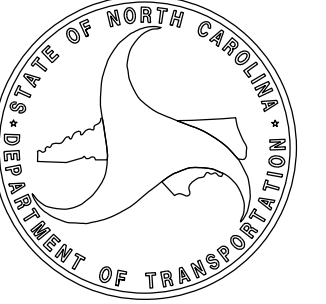
THIS 5TH DAY OF AUGUST, 2025.

DocuSigned by:

PROFESSIONAL LAND SURVEYOR L-4175
A8116B76D0DB4C1...

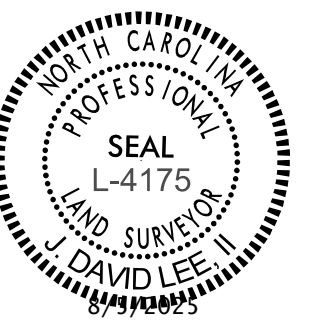
49218.26

R/W 02C-3

NORTH CAROLINA
DEPARTMENT
OF TRANSPORTATION



PROFESSIONAL LAND
SURVEYOR



DOCUMENT NOT CONSIDERED
FINAL UNLESS ALL SIGNATURES
ARE COMPLETED

2024 STANDARD
SPECIFICATIONS

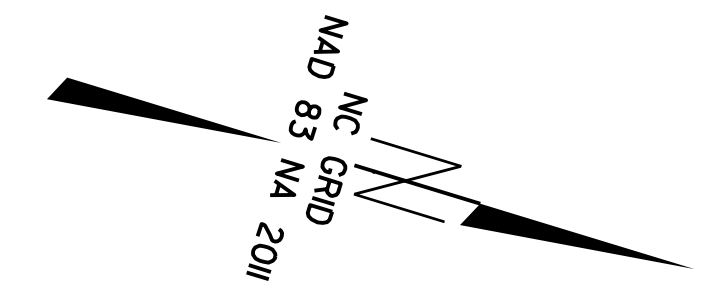
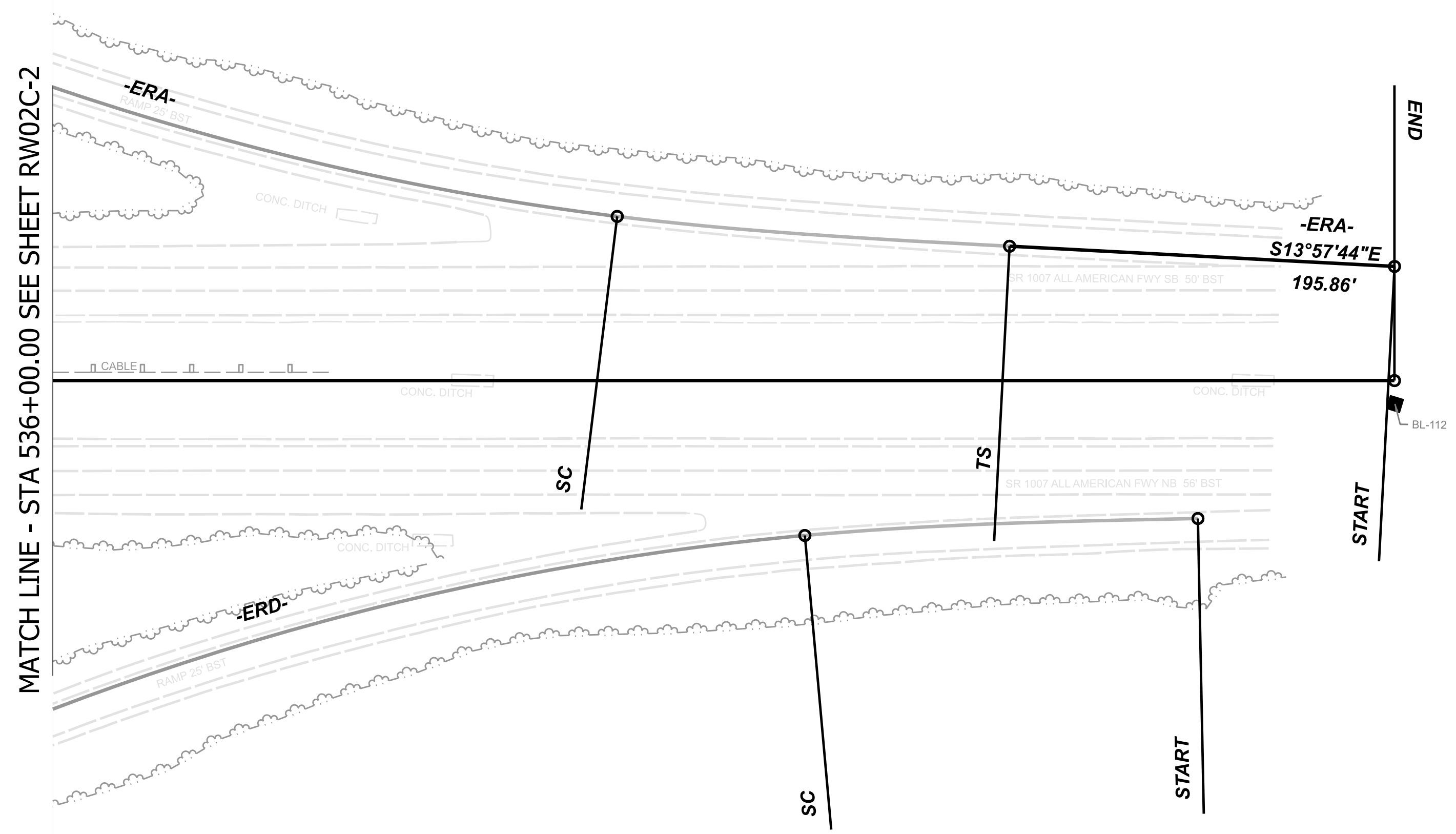
TIP PROJECT: 49218.26
County: Cumberland

PREPARED FOR

LOCATION AND
SURVEYS UNIT

PREPARED BY

350 PEE DEE AVE.,
SUITE 202
ALBEMARLE, NC 28001



SEE SHEET RW02C-6
FOR FURTHER
ALIGNMENT DETAILS

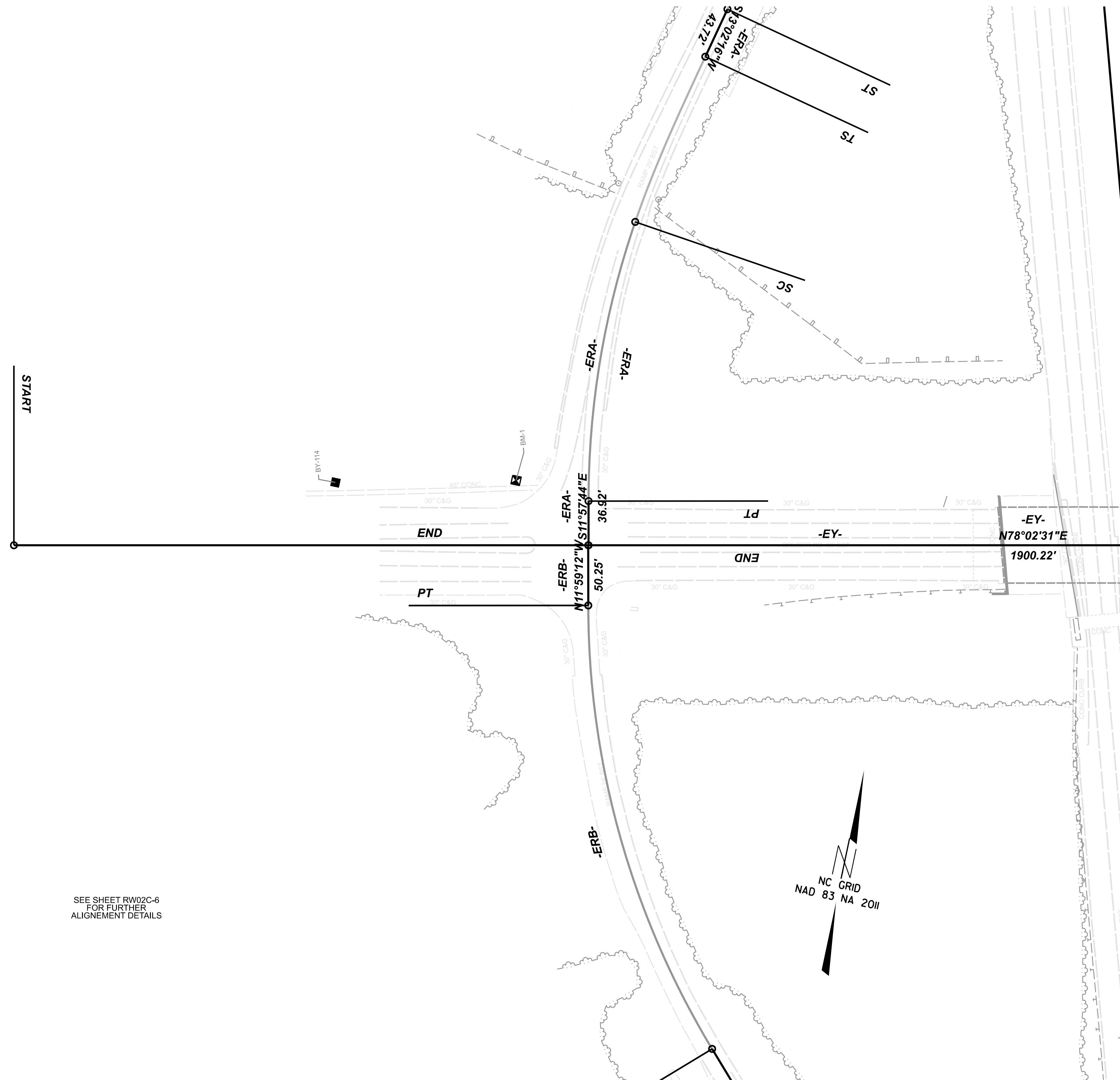
NOTES:

- 1. THE PROPOSED ALIGNMENT CONTROL DATA FOR THIS PROJECT HAS BEEN COMPILED FROM VARIOUS SOURCES. IF FURTHER INFORMATION REGARDING PROJECT CONTROL IS NEEDED, PLEASE CONTACT THE LOCATION AND SURVEYS UNIT.



SURVEY CONTROL SHEET

W/ EXISTING CENTERLINE ALIGNMENTS PRIOR TO CONSTRUCTION



SEE SHEET RW02C-6 FOR FURTHER ALIGNMENT DETAILS



THIS CONTROL IS TO ONLY BE USED FOR PROJECT 49218.26
-L- STA. 13 + 98.79 TO STA. 28 + 95.36; -Y- STA. 26 + 32.10 TO STA. 27 + 81.57

MATCH LINE - STA 29+75.00 SEE SHEET RW02C-5

NOTES:

- 1. THE PROPOSED ALIGNMENT CONTROL DATA FOR THIS PROJECT HAS BEEN COMPILED FROM VARIOUS SOURCES. IF FURTHER INFORMATION REGARDING PROJECT CONTROL IS NEEDED, PLEASE CONTACT THE LOCATION AND SURVEYS UNIT.

I CERTIFY THAT THE BASELINE CONTROL FOR THIS PROJECT WAS COMPLETED UNDER MY DIRECT AND RESPONSIBLE CHARGE FROM AN ACTUAL SURVEY MADE UNDER MY SUPERVISION; THAT ALL HORIZONTAL CLOSURES HAD A MINIMUM RATIO OF PRECISION OF 1:20,000 (CLASS AA) AND VERTICAL ACCURACY TO CLASS A. FIELD WORK WAS PERFORMED FROM 5/30/24 TO 5/31/24, AND ALL COORDINATES ARE BASED ON NAD 83/NA 2011 AND ALL ELEVATIONS ARE BASED ON NAVD 88; THAT THIS SURVEY WAS PERFORMED TO MEET THE REQUIREMENTS OF 21NCAC 56.1600 AS APPLICABLE.

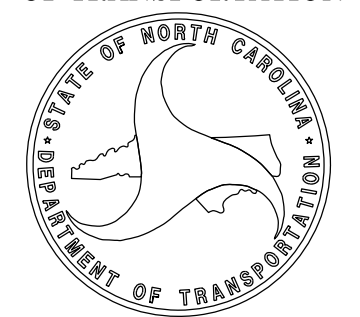
THIS 5TH DAY OF AUGUST, 2025.

DocuSigned by:
[Signature]
PROFESSIONAL LAND SURVEYOR L-4175
A8116B76D0DB4C1...

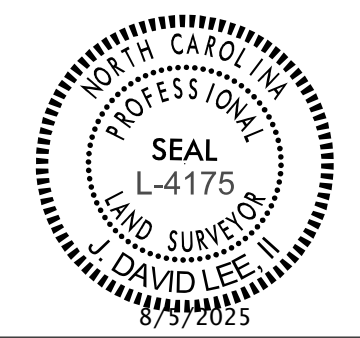
49218.26

R/W 02C-4

NORTH CAROLINA DEPARTMENT OF TRANSPORTATION



PROFESSIONAL LAND SURVEYOR



DOCUMENT NOT CONSIDERED FINAL UNLESS ALL SIGNATURES ARE COMPLETED

2024 STANDARD SPECIFICATIONS

TIP PROJECT: 49218.26
County: Cumberland

PREPARED FOR

LOCATION AND SURVEYS UNIT

PREPARED BY

350 PEE DEE AVE., SUITE 202 ALBEMARLE, NC 28001

SURVEY CONTROL SHEET

W/ EXISTING CENTERLINE ALIGNMENTS PRIOR TO CONSTRUCTION
THIS CONTROL IS TO ONLY BE USED FOR PROJECT 49218.26
-L- STA. 13 + 98.79 TO STA. 28 + 95.36; -Y- STA. 26 + 32.10 TO STA. 27 + 81.57

EXISTING ALIGNMENT NAME: EL									
POINT	NORTHING	EASTING	BEARING	DIST	DELTA	D	L	T	R
START	499125.2182	2006316.8460							
LINE			N16°58'15.3"W	3181.7552					
END	502168.4176	2005388.1356							

EXISTING ALIGNMENT NAME: EY									
POINT	NORTHING	EASTING	BEARING	DIST	DELTA	D	L	T	R
START	500536.2101	2004896.5132							
LINE			N78°02'31.2"E	1900.2225					
END	500929.9257	2006755.5004							

EXISTING ALIGNMENT NAME: ERA									
POINT	NORTHING	EASTING	BEARING	DIST	DELTA	D	L	T	R
START	502151.5031	2005332.8797							
LINE			S13°57'43.6"E	195.8573					
SC	501766.3201	2005423.6520							
CURVE					19°00'00.0" Right	04°00'00.0"	474.9985	239.6999	1432.3900
ST	501097.7185	2005386.9024							
LINE			S13°02'16.4"W	43.7159					
SC	500907.9852	2005348.3369							
CURVE					19°00'00.0" Left	07°59'59.9"	237.5009	119.8508	716.2000
PT	500671.7892	2005358.4929							
LINE			S11°57'43.6"E	36.9174					
END	500635.6735	2005366.1446							

EXISTING ALIGNMENT NAME: ERB									
POINT	NORTHING	EASTING	BEARING	DIST	DELTA	D	L	T	R
SC	499404.5252	2006150.5198							
CURVE					19°00'00.0" Left	03°00'00.0"	633.3336	319.6010	1909.8600
ST	500095.2585	2005695.0856							
LINE			N43°08'12.1"W	205.9129					
PC	500245.5182	2005554.2945							
CURVE					31°09'00.0" Right	07°59'59.9"	389.3765	199.6298	716.2000
PT	500586.4702	2005376.3393							
LINE			N11°59'12.1"W	50.2479					
END	500635.6225	2005365.9035							

EXISTING ALIGNMENT NAME: ERC									
POINT	NORTHING	EASTING	BEARING	DIST	DELTA	D	L	T	R
START	499285.6280	2006328.5302							
LINE			N13°58'30.8"W	195.8573					
SC	499670.7838	2006237.4708							
CURVE					19°00'00.9" Right	04°00'00.0"	475.0050	239.7032	1432.3900
ST	500339.4002	2006274.0661							
LINE			N13°01'29.2"E	37.3959					
SC	500522.9849	2006311.1638							
CURVE					19°00'00.0" Left	07°59'59.9"	237.5009	119.8508	716.2000
PT	500759.1785	2006300.9537							
LINE			N11°58'30.8"W	72.8624					
END	500830.4552	2006285.8356							

EXISTING ALIGNMENT NAME: ESPURC									
POINT	NORTHING	EASTING	BEARING	DIST	DELTA	D	L	T	R
START	500375.8340	2006282.4941							
LINE			N13°01'29.2"E	53.1314					
PC	500427.5743	2006294.4628							
CURVE					07°42'00.0" Left	04°00'00.0"	192.4994	96.3948	1432.3900
PT	500617.4680	2006325.1331							
LINE			N05°19'29.2"E	112.3152					
PC	500729.2974	2006335.5560							
CURVE					72°42'00.0" Right	43°59'57.2"	165.2302	95.8312	130.2200

EXISTING ALIGNMENT NAME: ERD									
POINT	NORTHING	EASTING	BEARING	DIST	DELTA	D	L	T	R
SC	501904.8049	2005550.8428							
CURVE					22°00'00.0" Left	04°00'00.0"	549.9983	278.4284	1432.3900
ST	501309.9675	2005995.0700							
LINE			S48°06'15.4"E	79.7103					
PC	501256.7388	2006054.4033							
CURVE					36°09'00.0" Right	07°59'59.9"	451.8767	233.7444	716.2000
PT	500871.9787	2006276.8085							
LINE			S11°57'15.4"E	42.4928					
END	500830.4074	2006285.6100							

BASELINE TABLE				
POINT	DESC	NORTH	EAST	ELEVATION
109	BL-109	500138.4799	2006020.0480	236.42
110	BL-110	500720.5607	2005970.7290	263.11
111	BL-111	501428.1863	2005625.1080	238.76
112	BL-112	502172.1419	2005399.4240	232.88
113	BL-113	502755.5140	2005176.8830	226.99
114	BY-114	500643.2141	2005148.4040	275.14
115	BY-115	500828.6594	2006512.1280	247.92
88	BL-88 (U-4414)	498904.7000	2006432.3550	226.48
89	BL-89 (U-4414)	499408.3700	2006297.5380	232.20

BENCHMARK TABLE				
BENCHMARK	NORTHING	EASTING	ELEVATION	DESCRIPTION
BM-1	500676.1481	2005295.698	276.08	TOP OF BOLT ON SIGNAL POST FOOTING

I CERTIFY THAT THE BASELINE CONTROL FOR THIS PROJECT WAS COMPLETED UNDER MY DIRECT AND RESPONSIBLE CHARGE FROM AN ACTUAL SURVEY MADE UNDER MY SUPERVISION; THAT ALL HORIZONTAL CLOSURES HAD A MINIMUM RATIO OF PRECISION OF 1:20,000 (CLASS AA) AND VERTICAL ACCURACY TO CLASS A. FIELD WORK WAS PERFORMED FROM 5/30/24 TO 5/31/24, AND ALL COORDINATES ARE BASED ON NAD 83/NA 2011 AND ALL ELEVATIONS ARE BASED ON NAVD 88; THAT THIS SURVEY WAS PERFORMED TO MEET THE REQUIREMENTS OF 21NCAC 56.1600 AS APPLICABLE.

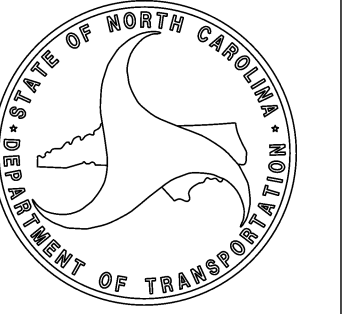
THIS 5TH DAY OF AUGUST, 2025.

DocuSigned by:
[Signature]
PROFESSIONAL LAND SURVEYOR L-4175
A8116B7D0DB4C1...

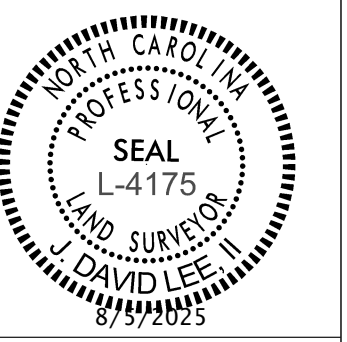
49218.26

R/W 02C-6

NORTH CAROLINA DEPARTMENT OF TRANSPORTATION



PROFESSIONAL LAND SURVEYOR

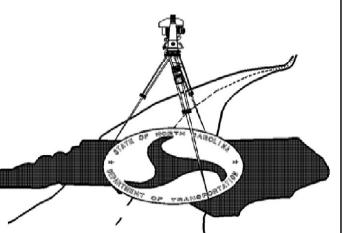


DOCUMENT NOT CONSIDERED FINAL UNLESS ALL SIGNATURES ARE COMPLETED

2024 STANDARD SPECIFICATIONS

TIP PROJECT: 49218.26
County: Cumberland

PREPARED FOR



LOCATION AND SURVEYS UNIT

PREPARED BY



350 PEE DEE AVE., SUITE 202 ALBEMARLE, NC 27801

NOTES:

1. THE PROPOSED ALIGNMENT CONTROL DATA FOR THIS PROJECT HAS BEEN COMPILED FROM VARIOUS SOURCES. IF FURTHER INFORMATION REGARDING PROJECT CONTROL IS NEEDED, PLEASE CONTACT THE LOCATION AND SURVEYS UNIT.
2. THE ALIGNMENTS SHOWN WERE RECREATED USING PLANS FOR NCDOT PROJECT 8.2326306.