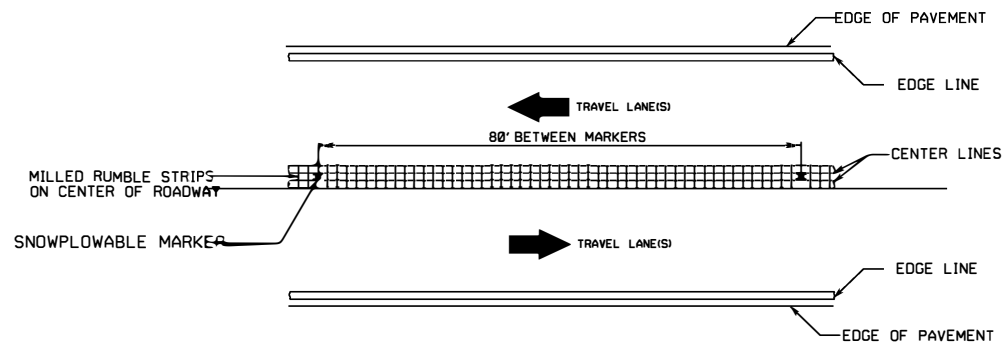
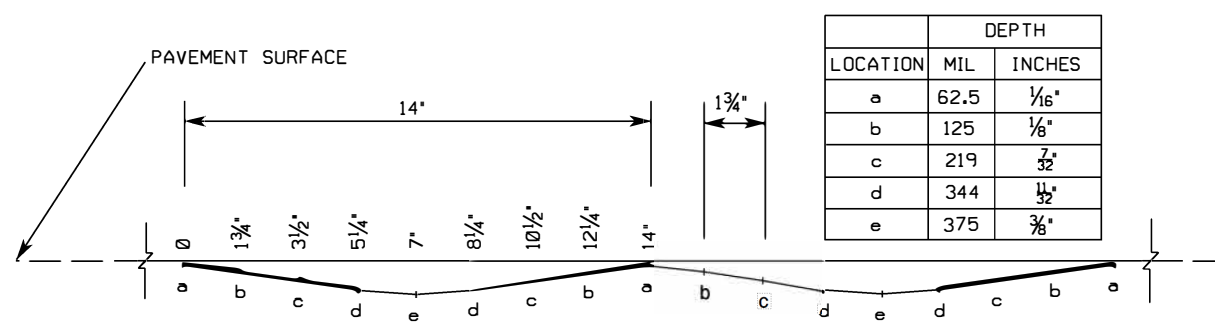


See Table 2 within Rumble Strip Policy for Design Guidance

**LANE TREATMENT**

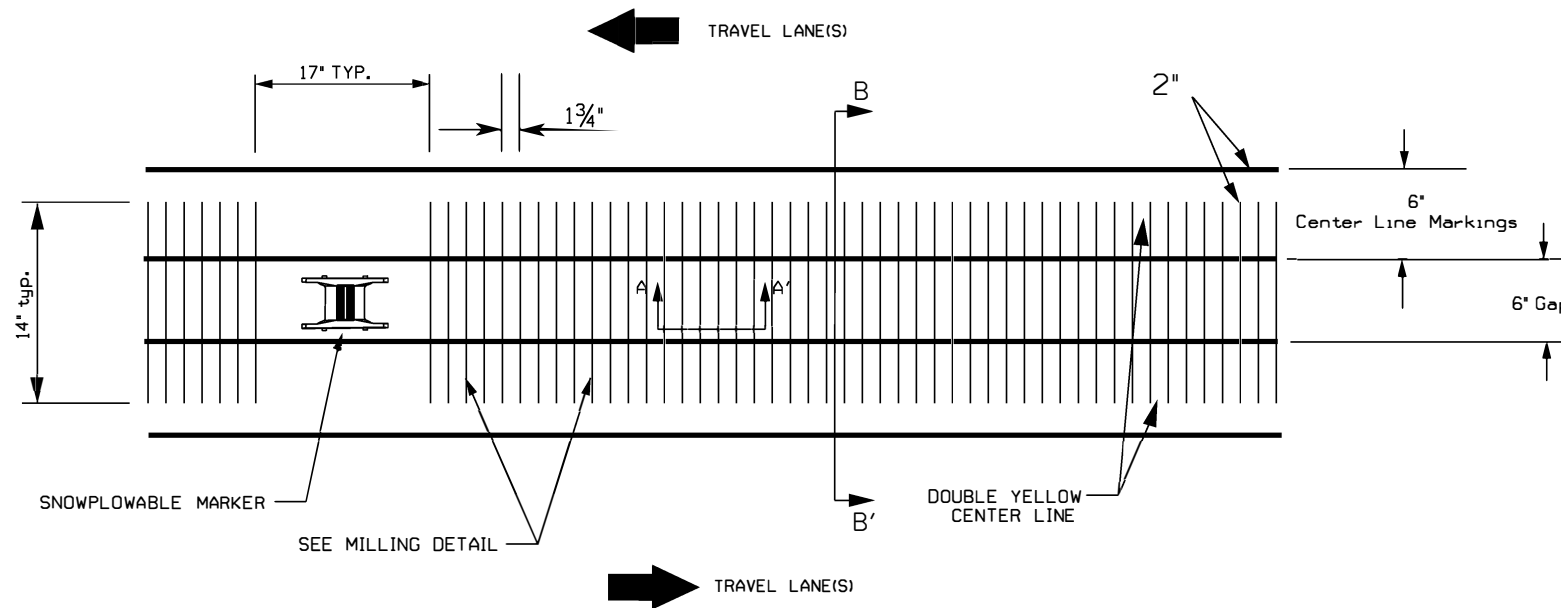


**PROFILE:**

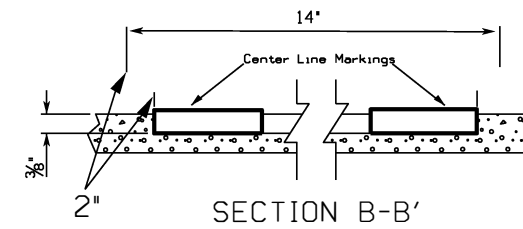


SECTION A-A'

**CENTER LINE**



**MILLING DETAIL**



SECTION B-B'

REFERENCE DRAWING ID: S1n.CL with Snowplowable Markers

**NOTES:**

- 1) USING A VACUUM, REMOVE ALL DEBRIS FROM THE MILLINGS JUST PRIOR TO PLACING ANY PAVEMENT MARKINGS.
- 2) ENSURE GLASS BEADS ARE SPREAD UNIFORMLY OVER THE ENTIRE SURFACE OF THE PAVEMENT MARKING MATERIAL.
- 3) INSTALL SNOWPLOWABLE MARKERS AT APPROXIMATELY 80' INCREMENTS. DO NOT MILL RUMBLE STRIPS IN SECTION WHERE SNOWPLOWABLE MARKERS ARE INSTALLED.

STATE OF NORTH CAROLINA  
 DEPT. OF TRANSPORTATION  
 DIVISION OF HIGHWAYS  
 RALEIGH, N.C.

ROADWAY DETAIL DRAWING FOR  
 RUMBLE STRIPS / STRIPES  
 SINUSOIDAL CENTERLINE RUMBLE STRIPE WITH SNOWPLOWABLE MARKERS

SHEET 8 OF 9

DocuSigned by:  
*Jessi L. Leonard*  
 4D590D07E47C40F...  
 02/25/2026

CONTRACTS STANDARDS AND DEVELOPMENT UNIT  
 Office 919-707-8950 FAX 919-250-4119

SEE TITLE BLOCK

ORIGINAL BY: C. SIMPSON DATE: 04-24-2025  
 MODIFIED BY: DATE:  
 CHECKED BY: DATE:  
 FILE SPEC.: