

28-OCT-2025 13:29
D:\p\modat-pw\bernt ley.com\ncdot-pw-01\Documents\NCDOT TSMO\SIGNAL Design Section\014\ision_05\05-1243\SIGNAL Management\051243_sm.ele_20251028.dgn
sgk:iraport:ck

ECONOLITE ASC/3 LOGIC PROCESSOR

PROGRAMMING DETAIL

(program controller as shown)

1. From Main Menu select 1. CONFIGURATION

2. From CONFIGURATION Submenu select 8. LOGIC PROCESSOR

From the LOGIC PROCESSOR Submenu select:

2. LOGIC STATEMENTS

ENTER A "1" IN THE LP# FIELD. PRESS 'ENTER', AND PROGRAM AS SHOWN.

LP#: 1 COPY FROM: 1 ACTIVE: M (T/F)
IF PED ON PH PED CLR 2 IS ON
AND LP COB CODE ON 546

THEN SIG SET PH YELLOW 2 ON

ELSE

LOGIC TO FLASH YELLOW SIGNAL
FACES AFTER A PED CALL IS PLACED.

ENTER A "2" IN THE LP# FIELD. PRESS 'ENTER', AND PROGRAM AS SHOWN.

LP#: 2 COPY FROM: 2 ACTIVE: M (T/F)
IF PED ON PH PED CLR 4 IS ON
AND LP COB CODE ON 546

THEN SIG SET PHASE RED 2 OFF

ELSE

LOGIC FOR ALTERNATING FLASH
ON THE RED SIGNAL FACES
DURING THE PHASE 4 PED CLEAR
(FORCES PHASE 2 RED OFF).

ENTER A "3" IN THE LP# FIELD. PRESS 'ENTER', AND PROGRAM AS SHOWN.

LP#: 3 COPY FROM: 3 ACTIVE: M (T/F)
IF PED ON PH PED CLR 4 IS ON
AND LP COB CODE OFF 546

THEN SIG SET PHASE RED 6 OFF

ELSE

LOGIC FOR ALTERNATING FLASH
ON THE RED SIGNAL FACES
DURING THE PHASE 4 PED CLEAR
(FORCES PHASE 6 RED OFF).

END PROGRAMMING

NOTE: COB CODE 546 is a 1Hz 50% Duty Cycle internal logic processor reference.

TIMING INTERVAL

PHASE 2+6 WALK = Dark Display

PHASE 2+6 PED CLEAR = Flashing Yellow Display

PHASE 2+6 VEH YEL CLR = Steady Yellow Display

PHASE 2+6 RED CLEAR = Steady Red Display

PHASE 4+8 WALK = Steady Red Display

PHASE 4+8 PED CLEAR = Alternating Flashing Red Display

PHASE 4+8 VEH YEL CLR = Alternating Flashing Red Display

PHASE 4+8 VEH RED CLR = Alternating Flashing Red Display

From the LOGIC PROCESSOR Submenu select:

1. LOGIC STATEMENT CONTROL

ENABLE LOGIC PROCESSOR STATEMENTS 1-3 BY POSITIONING THE CURSOR OVER THE FIELDS SHOWN BELOW AND USING THE TOGGLE KEY TO ENABLE THEM.

LOGIC STATEMENT CONTROL																
	1	2	3	4	5	6	7	8	9	0	1	2	3	4	5	6
LP 1-15	E	E	E
LP 16-30
LP 31-45
LP 46-60
LP 61-75
LP 76-90

END PROGRAMMING

ECONOLITE ASC/3-2070
LOAD SWITCH ASSIGNMENT DETAIL

(program controller as shown)

1. From Main Menu select 1. CONFIGURATION

2. From CONFIGURATION Submenu select 3. LOAD SW ASSIGN

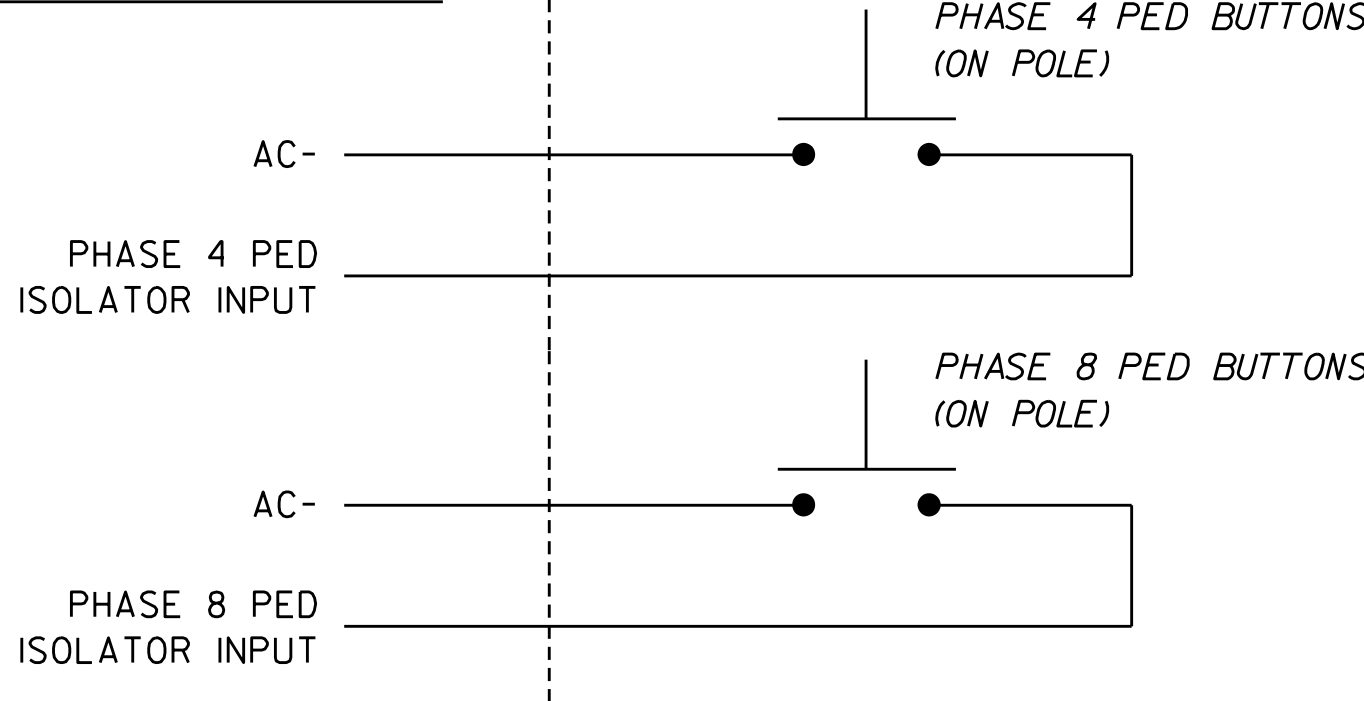
LD SWITCH ASSIGN										
	PHASE	/OVLP	TYPE	DIMMING			---FLASH---			
				R	Y	G	D	PWR	AUT	TGR
1	1	V	.	.	.	+	A	R	X	
2	2	V	.	.	.	+	A	Y	.	
3	3	V	.	.	.	+	A	R	X	
4	4	V	.	.	.	+	A	R	.	
5	5	V	.	.	.	-	A	R	.	
6	6	V	.	.	.	-	A	Y	X	
7	7	V	.	.	.	-	A	R	.	
8	8	V	.	.	.	-	A	R	X	
9	2	P	.	.	.	+	A	.	.	
10	4	P	.	.	.	+	A	.	.	
11	6	P	.	.	.	-	A	.	.	
12	8	P	.	.	.	-	A	.	.	
13	1	O	.	.	.	+	A	R	X	
14	2	O	.	.	.	-	A	R	X	
15	3	O	.	.	.	+	A	R	.	
16	4	O	.	.	.	-	A	R	.	

THIS ELECTRICAL DETAIL IS FOR
THE SIGNAL DESIGN: 05-1243
DESIGNED: October 2025
SEALED: 10/28/2025
REVISED: N/A

PEDESTRIAN PUSH BUTTON WIRING DETAIL

(wire push buttons as shown)

CONTROLLER CABINET



COUNTDOWN PEDESTRIAN SIGNAL OPERATION

Countdown Ped Signals are required to display timing only during Ped Clearance Interval. Consult Ped Signal Module user's manual for instructions on selecting this feature.

ACCESSIBLE PEDESTRIAN SIGNAL (APS)
INSTALLATION NOTES

1. Install push buttons and APS equipment per manufacturer's instructions.
2. Provide a dedicated cable to each push button per manufacturer's instructions.
3. If APS equipment is mounted in cabinet, use filtered power (i.e., Controller Receptacle) to power APS equipment. Do not use Equipment Receptacle, which is a GFCI outlet.
4. Never attempt to operate a standard contact closure push button with the APS system unless cabinet is re-wired for standard button operation or unless explicitly allowed by the manufacturer.
5. Place manufacturer's instructions in cabinet with cabinet prints, signal plans, and electrical details.
6. An APS push button station that is designed to work without the need for interfacing with a pedestrian signal head shall be installed for applications where a push button is installed in a median without a pedestrian signal head.
7. A push button with a single tactile arrow that point in both directions of travel shall be installed if the median separates two parallel crosswalks.

Electrical Detail - Sheet 2 of 2

DOCUMENT NOT CONSIDERED
FINAL UNLESS ALL
SIGNATURES COMPLETED

ELECTRICAL AND PROGRAMMING
DETAILS FOR:

Prepared In the Offices of:



750 N. Greenfield Pkwy, Garner, NC 27529

SR 3126 (Airport Boulevard)
at
Indian Creek Greenway

Division 5 Wake County Morrisville

PLAN DATE: October 2025

REVIEWED BY:

PREPARED BY: S. Kirkpatrick

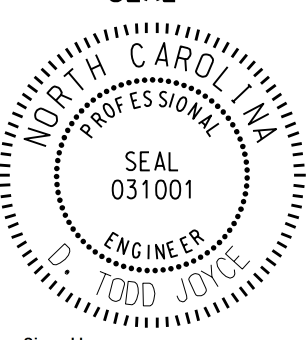
REVIEWED BY:

REVISIONS

INIT.

DATE

SEAL



DocuSigned by:

Todd Joyce

10/28/2025

DATE

SIG. INVENTORY NO. 05-1243