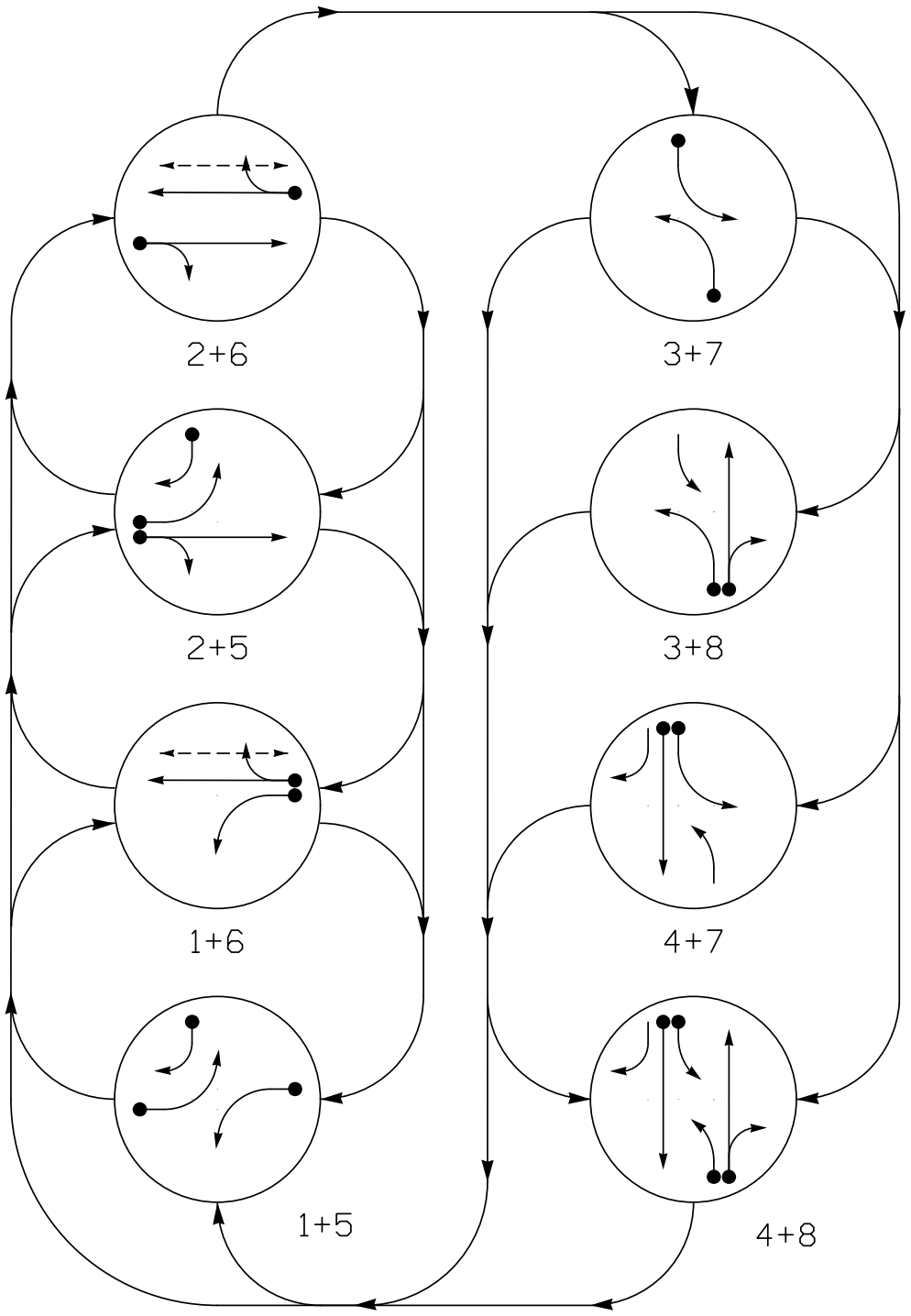
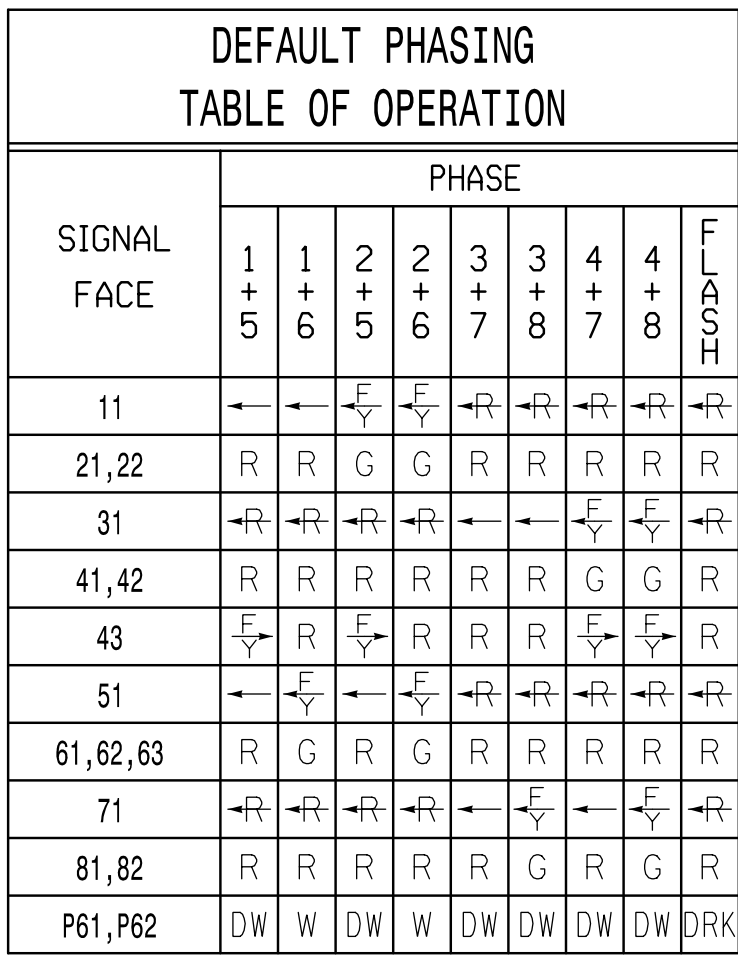
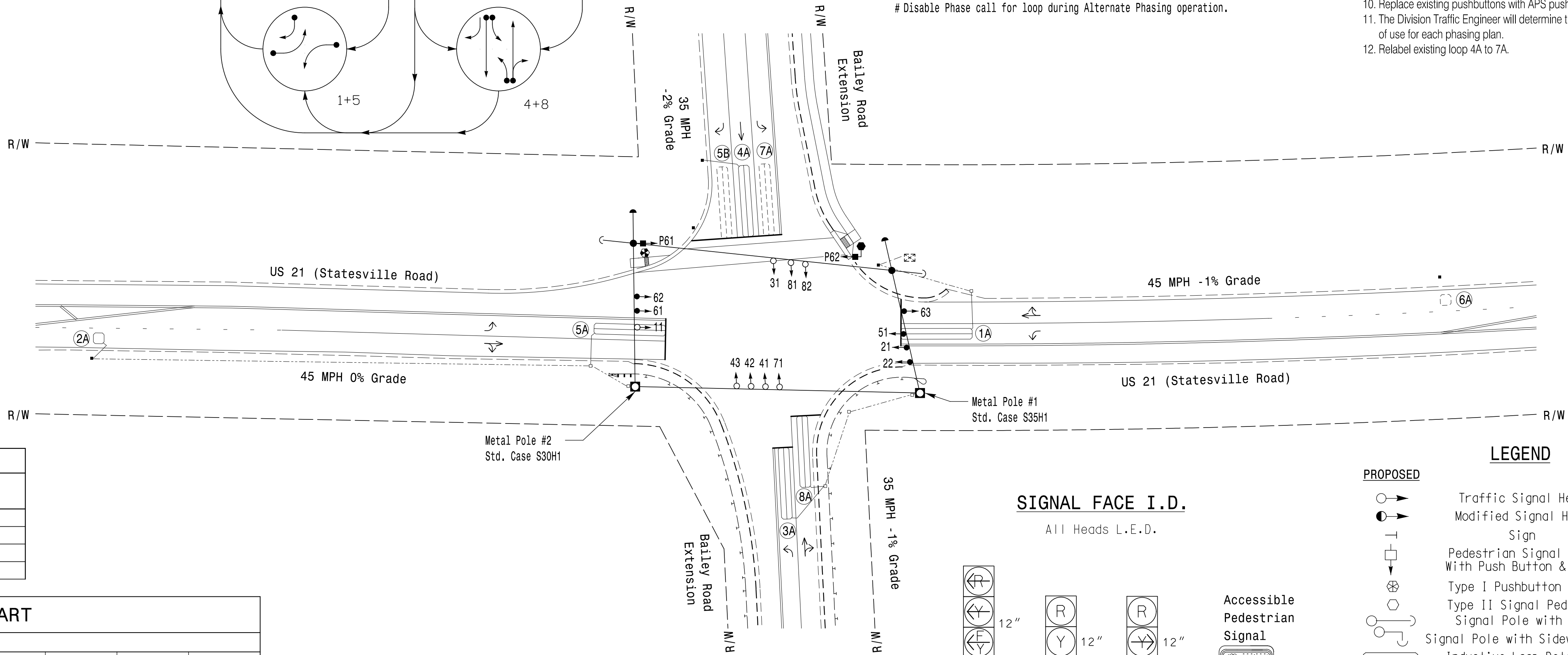


1. Refer to "Roadway Standard Drawings NCDOT" dated January 2024 and "Standard Specifications for Roads and Structures" dated January 2024.
2. Do not program signal for late night flashing operation unless otherwise directed by the Engineer.
3. Phase 1 and/or phase 5 may be lagged.
4. Phase 3 and/or phase 7 may be lagged.
5. Program phase 4 and phase 8 for dual entry.
6. Set all detector units to presence mode.
7. Omit "WALK" and flashing "DON'T WALK" with no pedestrian calls.
8. Program pedestrian heads to countdown the flashing "Don't Walk" time only.
9. This intersection features accessible pedestrian signals utilizing percussive tone walk indications and/or speech messages.
10. Replace existing pushbuttons with APS pushbuttons.
11. The Division Traffic Engineer will determine the hours of use for each phasing plan.
12. Relabel existing loop 4A to 7A.



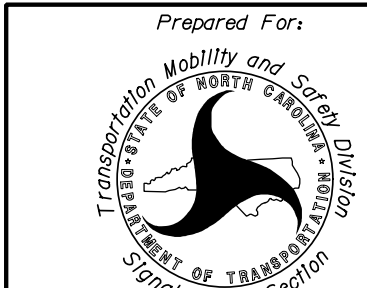
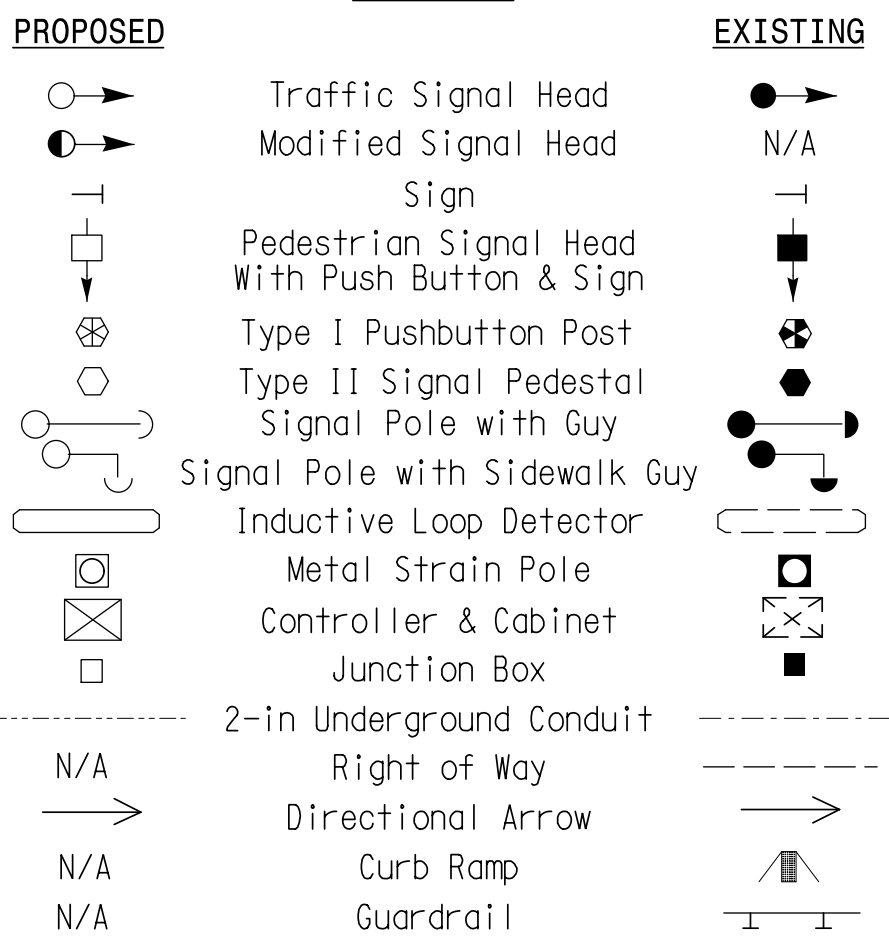
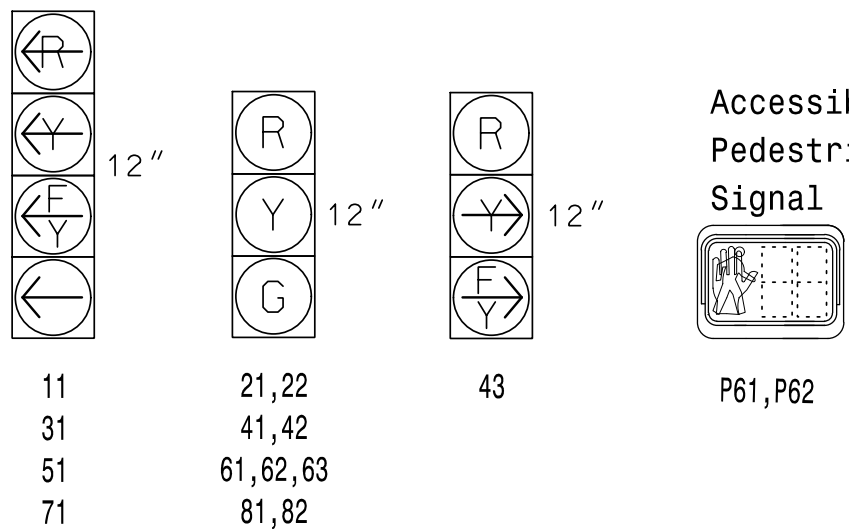
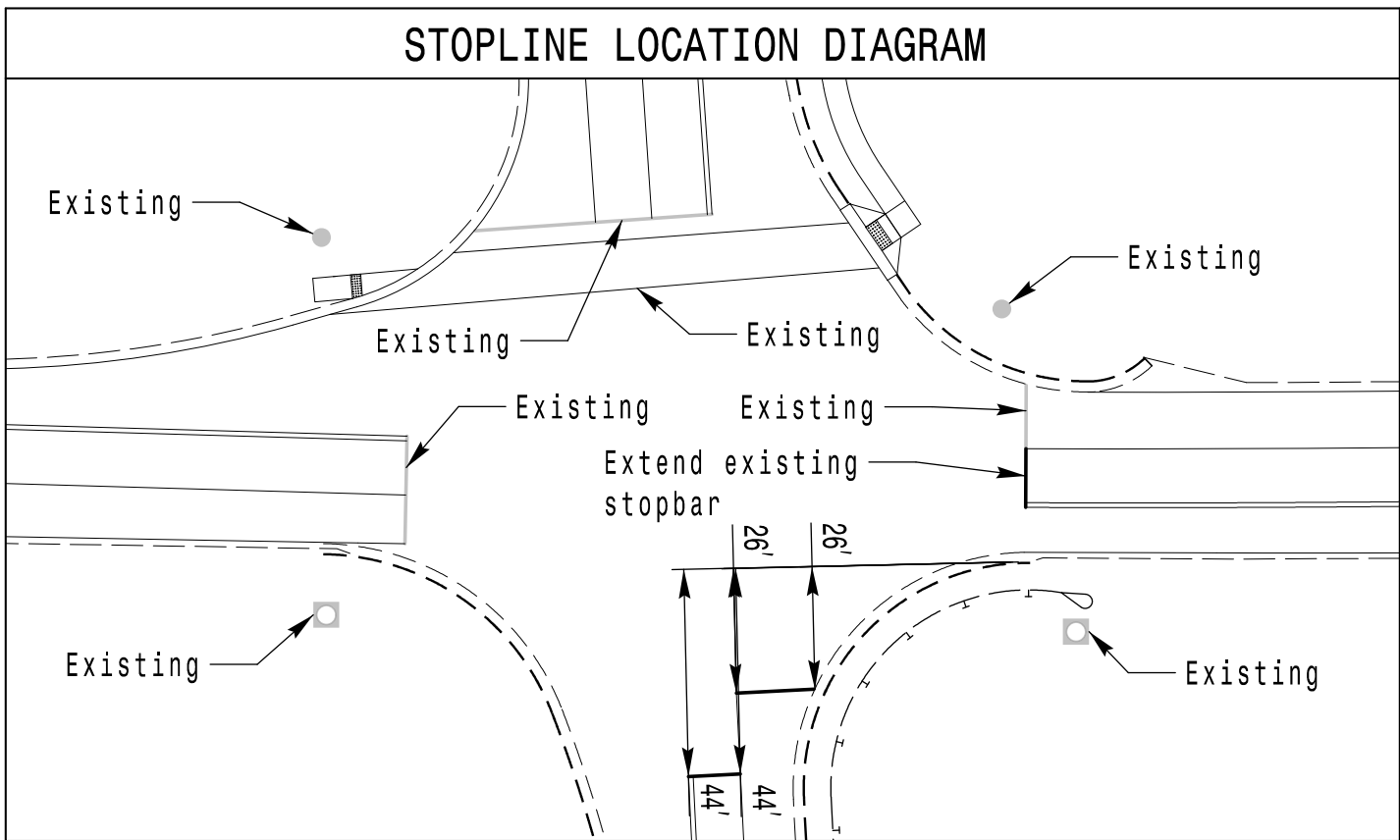
ALTERNATE PHASING TABLE OF OPERATION									
SIGNAL FACE	PHASE								
	1 + 5	1 + 6	2 + 5	2 + 6	3 + 7	3 + 8	4 + 7	4 + 8	F L A S H
11	←	←	→	→	→	→	→	→	→
21,22	R	R	G	G	R	R	R	R	R
31	→	→	→	→	←	←	↔	↔	→
41,42	R	R	R	R	R	G	G	R	R
43	↔	R	↔	R	R	↔	↔	R	R
51	←	→	←	→	→	→	→	→	→
61,62,63	R	G	R	G	R	R	R	R	R
71	→	→	→	→	←	↔	↔	↔	→
81,82	R	R	R	R	G	R	G	R	R
P61,P62	DW	W	DW	W	DW	DW	DW	DW	DRK

```
* Reduce Delay to 3 seconds during Alternate Phasing operation.
# Disable Phase call for loop during Alternate Phasing operation.
```



MAXTIME TIMING CHART

* These values may be field adjusted. Do not adjust Min Green and Passage times for phases 2 and 6 lower than what is shown. Min Green for all other phases should not be lower than 4 seconds.



PLANS PREPARED IN THE OFFICE OF:
Kimley»Horn
NC License #F-0102
421 Fayetteville Street, Suite 600
Raleigh, NC 27601
(919) 677-2000

US 21 (Statesville Road)
at
Bailey Road Extension

Division 10 Mecklenberg County Cornelius

PLAN DATE: April 2024	REVIEWED BY: MC Burke
-----------------------	-----------------------

PREPARED BY: EE Dogbe		REVIEWED BY: SL Phillips	
REVISIONS		INIT	DATE

[illegible]

SEAL



DocuSigned by:
SALPi
6/3/2024
DATE
SIG. INVENTORY NO. 10-2507