

## MAXTIME OVERLAP PROGRAMMING DETAIL FOR DEFAULT PHASING

Front Panel  
Main Menu >Controller >Overlap >Overlap Parameters/Overlap Timings

Web Interface  
Home >Controller >Overlap Configuration >Overlaps

### Overlap Plan 1

Overlap	1	2	3	7
Type	FYA 4 - Section	FYA 4 - Section	FYA 4 - Section	Normal
Included Phases	6	6	8	3
Modifier Phases	3	3	-	-
Modifier Overlaps	-	-	-	-
Trail Green	0	0	0	0
Trail Yellow	0.0	0.0	0.0	0.0
Trail Red	0.0	0.0	0.0	0.0

### MAXTIME OVERLAP PROGRAMMING DETAIL FOR ALTERNATE PHASING

Front Panel  
Main Menu >Controller >Overlap >Overlap Parameters/Overlap Timings

Web Interface  
Home >Controller >Overlap Configuration >Overlaps

In the table view of the web interface, right click on "Overlap" in the top left corner of the table. Copy the entire contents of Overlap Plan 1. Paste Overlap Plan 1 into Overlap Plan 2. Modify Overlap Plan 2 as shown below and save changes.

### Overlap Plan 2

Overlap	1	2	3	7
Type	FYA 4 - Section	FYA 4 - Section	FYA 4 - Section	Normal
Included Phases	-	-	8	3
Modifier Phases	3	3	-	-
Modifier Overlaps	-	-	-	-
Trail Green	0	0	0	0
Trail Yellow	0.0	0.0	0.0	0.0
Trail Red	0.0	0.0	0.0	0.0

← NOTICE INCLUDED PHASE

### MAXTIME DETECTOR PROGRAMMING DETAIL FOR ALTERNATE PHASING LOOP 3A

Front Panel  
Main Menu >Controller >Detector >Veh Det Plans

Web Interface  
Home >Controller >Detector Configuration >Vehicle Detectors

In the table view of web interface right click on "Detector" in the top left corner of the table. Copy the entire contents of Detector Plan 1. Paste Detector Plan 1 into Detector Plan 2. Modify Detector Plan 2 as shown below and save changes.

Detector	Call Phase	Delay
7	3	0

3A

### MAXTIME ALTERNATE PHASING ACTIVATION DETAIL

To run alternate phasing, select a Pattern that is programmed to run Overlap Plan 2 and Detector Plan 2. A Pattern can be selected through the scheduler or manually by changing the Operational Mode.

<u>PHASING</u>	<u>OVERLAP PLAN</u>	<u>VEH DET PLAN</u>
ACTIVE PLAN REQUIRED TO <u>RUN DEFAULT PHASING</u>	1	1
ACTIVE PLAN REQUIRED TO <u>RUN ALTERNATE PHASING</u>	2	2

### ALTERNATE PHASING CHANGE SUMMARY

THE FOLLOWING IS A SUMMARY OF WHAT TAKES PLACE WHEN  
OVERLAP PLAN 2 AND VEHICLE DETECTOR PLAN 2 ACTIVATE  
TO CALL THE "ALTERNATE PHASING":

OVERLAP PLAN 2: Modifies overlap included phases for heads 31 and 32 to run protected turns only.

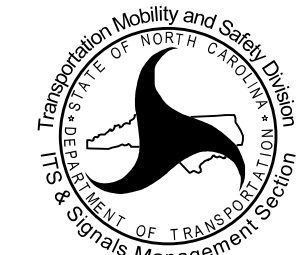
VEH DET PLAN 2: Reduces delay time for phase 3 all on loop 3A to 0 seconds.

THIS ELECTRICAL DETAIL IS FOR  
THE SIGNAL DESIGN: 05-1662  
DESIGNED: May 2025  
SEALED: 8/28/2025  
REVISED: N/A

Electrical Detail - Sheet 2 of 3

Electrical and Programming  
Details For:

Prepared in the Offices of:



750 N. Greenfield Pkwy, Garner, NC 27529

SR 1006 (Old Stage Road)  
at  
SR 2724 (Banks Road)

Division 5 Wake County Fuquay-Varina

PLAN DATE:	August 2025	REVIEWED BY:
------------	-------------	--------------

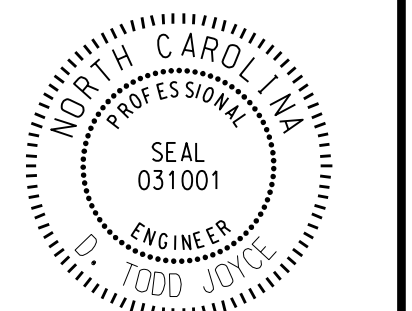
PREPARED BY:	Zarrar Zafar	REVIEWED BY:
--------------	--------------	--------------

REVISIONS		INIT.	DATE
-----------	--	-------	------

[illegible]

DOCUMENT NOT CONSIDERED  
FINAL UNLESS ALL  
SIGNATURES COMPLETED

## REAL



DocuSigned by:  
08/29/2025

D. Todd Joyce      08/29/2025  
DATE