

PROJECT REFERENCE NO. B-5985	SHEET NO. EC-04/CONST.05
ROADWAY DESIGN ENGINEER	HYDRAULICS ENGINEER

UTILIZE SPECIAL STILLING BASIN WHERE APPLICABLE.

CLEARING AND GRUBBING
 EROSION CONTROL FOR
 CONSTRUCTION SHEET 5

NOTE: UTILIZE FABRIC INSERT INLET PROTECTION DEVICE AS DIRECTED BY ENGINEER IN LIEU OF ROCK INLET SEDIMENT TRAP TYPE C TO PREVENT IMPOUNDING RUNOFF ON ROADWAYS OPEN TO THE PUBLIC.

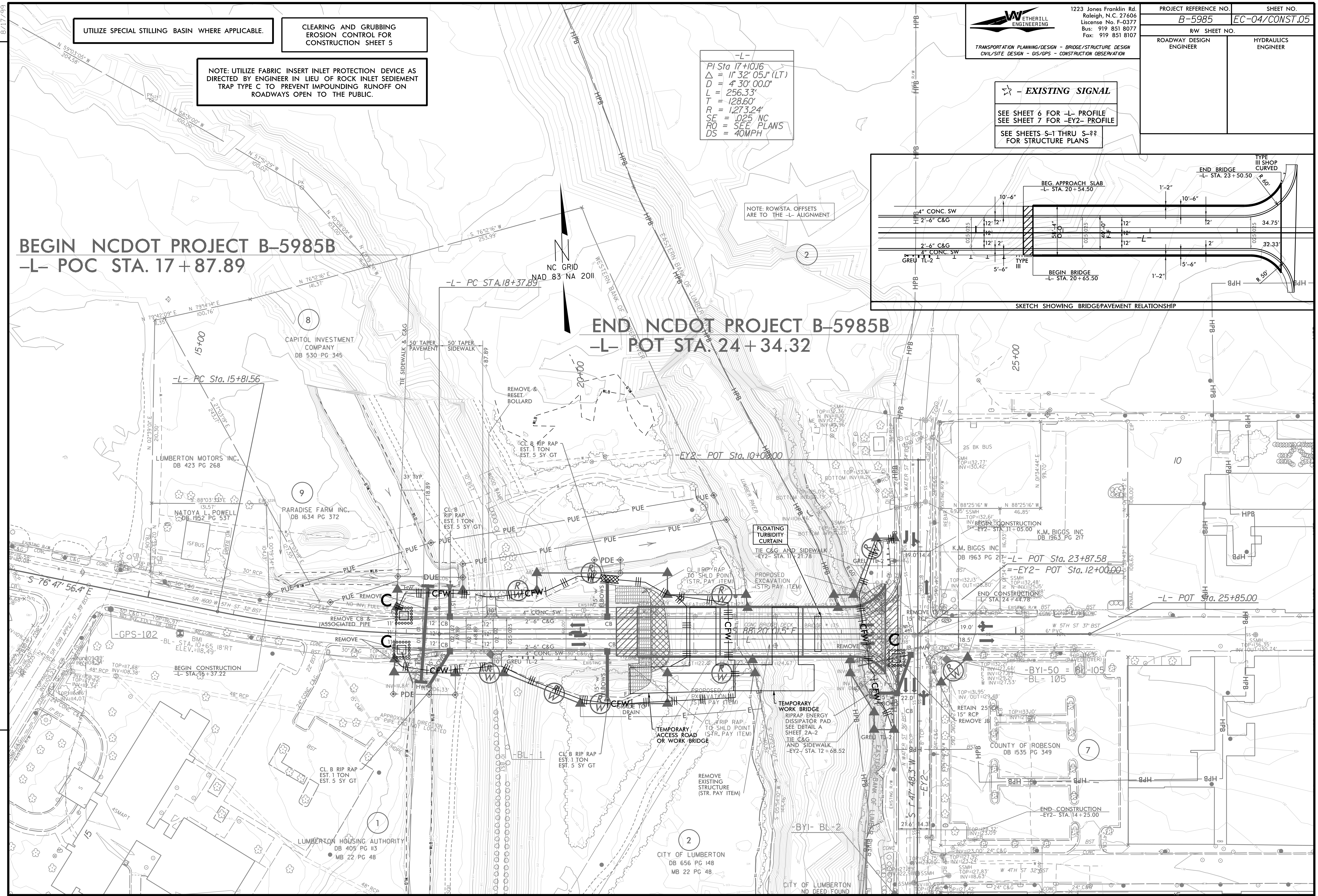
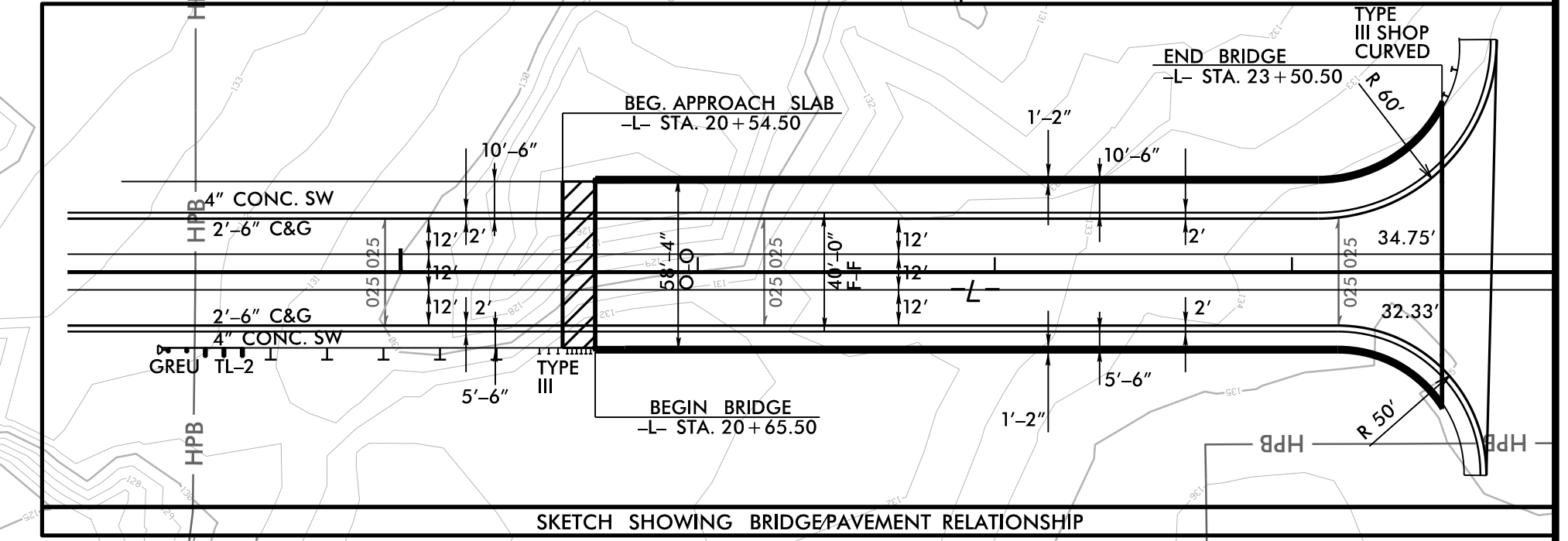
-L-
 PI Sta 17+10.16
 $\Delta = 11' 32' 05.1" (LT)$
 $D = 4' 30' 00.0"$
 $L = 256.33'$
 $T = 128.60'$
 $R = 1,273.24'$
 $SE = .025 NC$
 $RO = SEE PLANS$
 $DS = 40MPH$

☆ - EXISTING SIGNAL
 SEE SHEET 6 FOR -L- PROFILE
 SEE SHEET 7 FOR -EY2- PROFILE
 SEE SHEETS S-1 THRU S-??
 FOR STRUCTURE PLANS

REVISIONS

BEGIN NCDOT PROJECT B-5985B
-L- POC STA. 17+87.89

END NCDOT PROJECT B-5985B
-L- POT STA. 24+34.32



MATCHLINE SHEET 4 -EY2- STA. 15+00.00