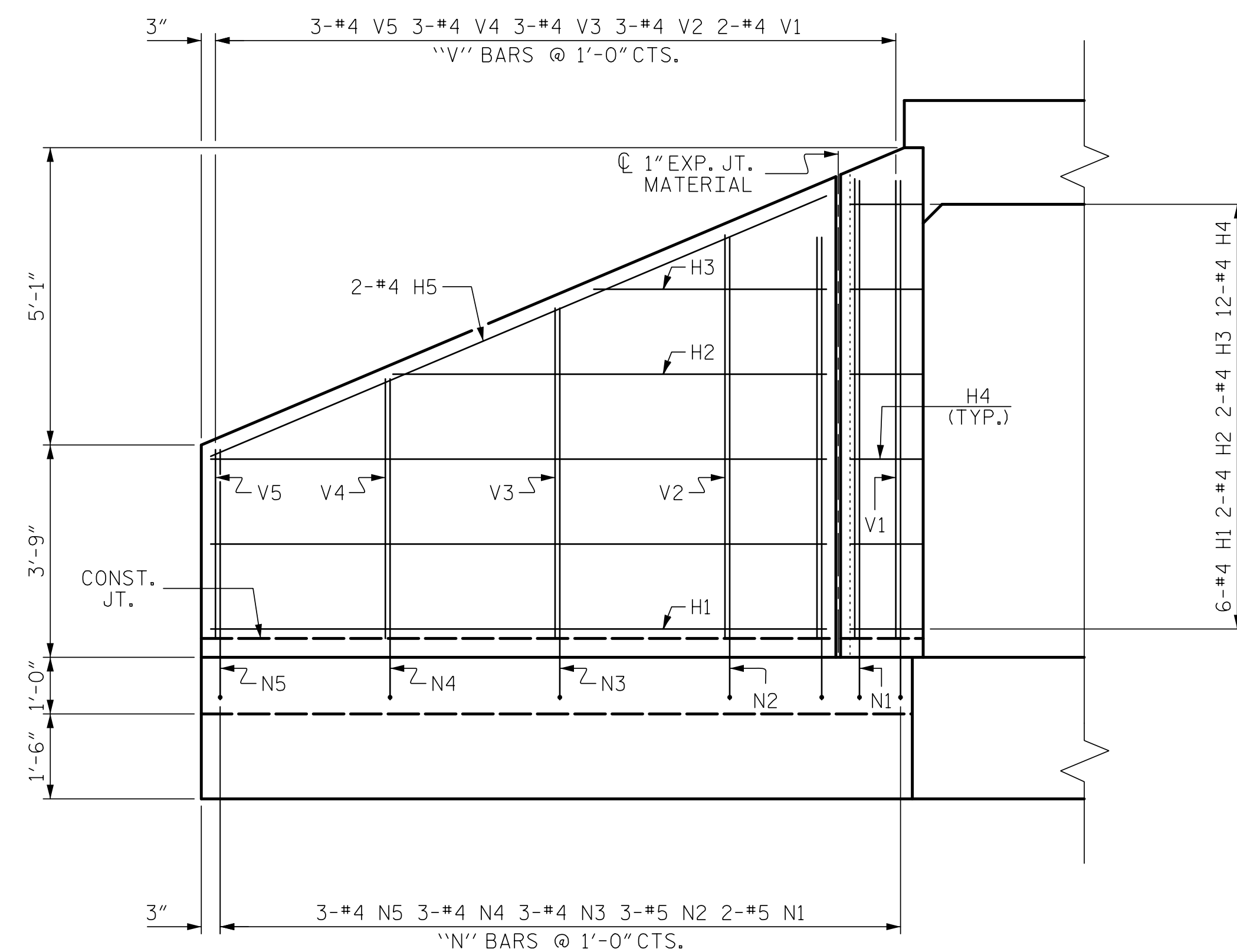
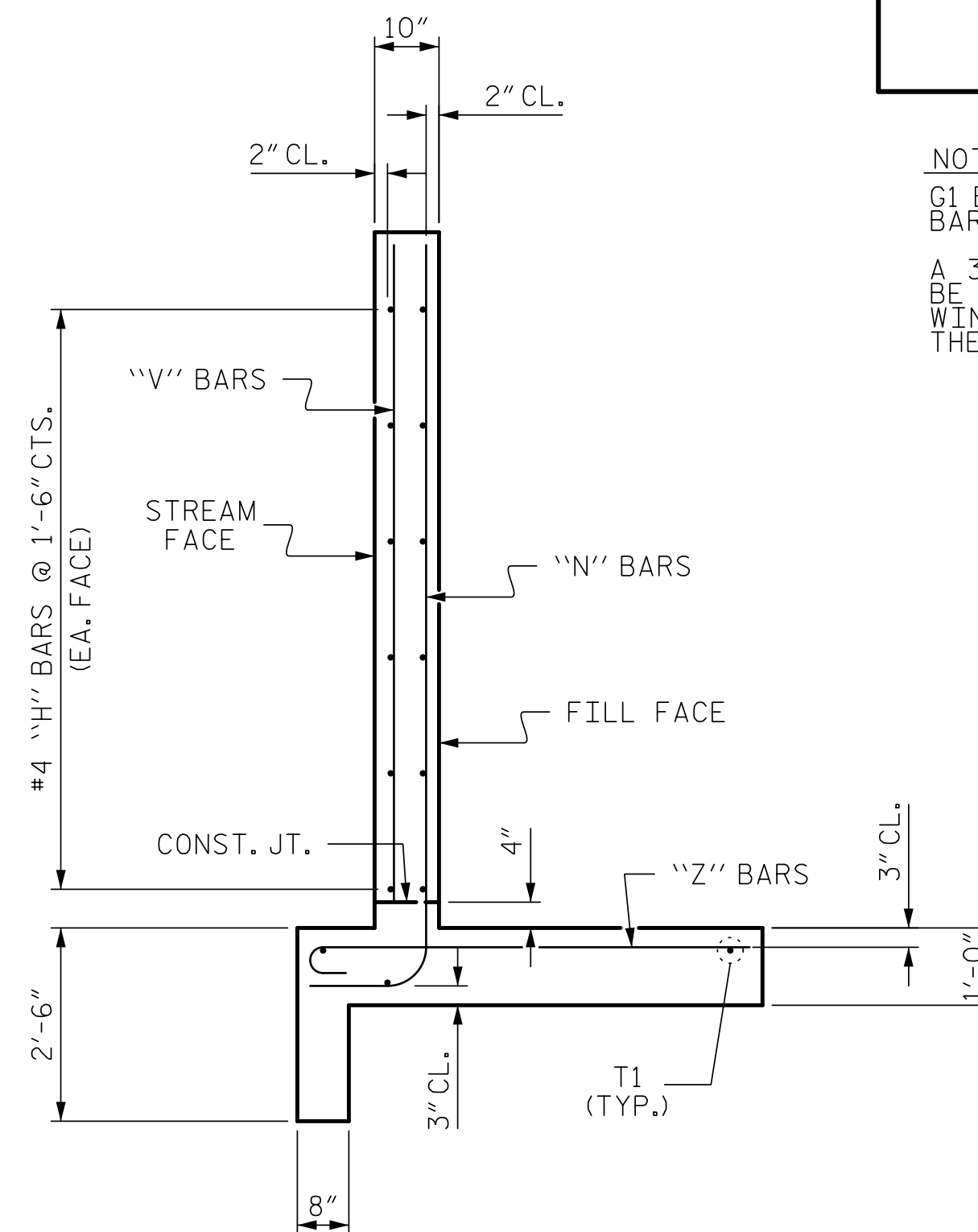


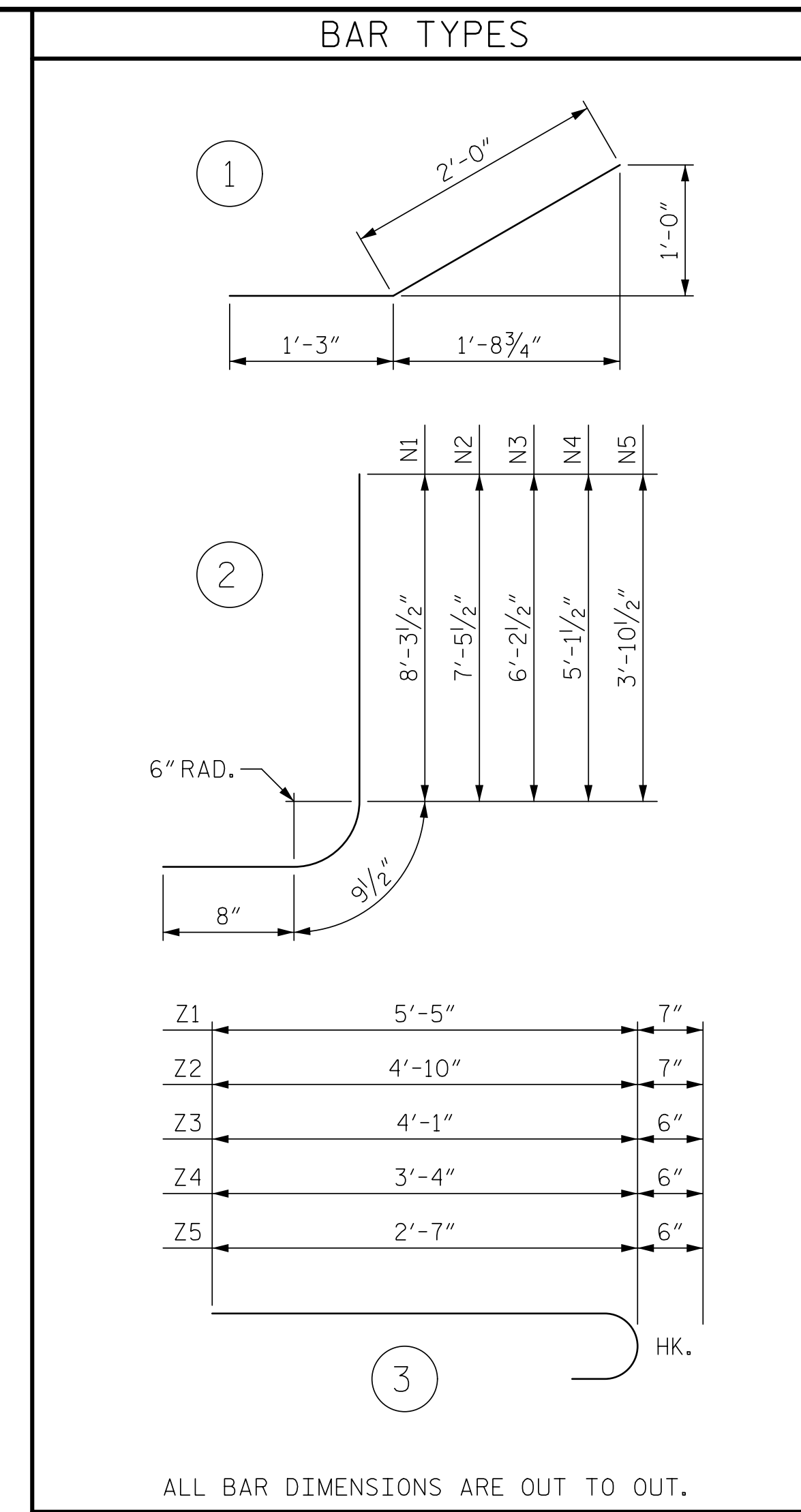
PLAN



ELEVATION



TYPICAL WING SECTION



BILL OF MATERIAL					
BAR	NO.	SIZE	TYPE	LENGTH	WEIGHT
H1	12	#4	STR	10'-10"	87
H2	4	#4	STR	7'-8"	20
H3	4	#4	STR	3'-11"	10
H4	24	#4	1	3'-3"	52
H5	4	#4	STR	11'-9"	31
N1	4	#5	2	9'-9"	41
N2	6	#5	2	8'-11"	56
N3	6	#4	2	7'-8"	31
N4	6	#4	2	6'-7"	26
N5	6	#4	2	5'-4"	21
S1	6	#6	STR	6'-0"	54
T1	6	#5	STR	12'-9"	80
V1	4	#4	STR	7'-10"	21
V2	6	#4	STR	6'-11"	28
V3	6	#4	STR	5'-9"	23
V4	6	#4	STR	4'-7"	18
V5	6	#4	STR	3'-4"	13
Z1	4	#5	3	6'-0"	25
Z2	6	#5	3	5'-5"	34
Z3	6	#4	3	4'-7"	18
Z4	6	#4	3	3'-10"	15
Z5	6	#4	3	3'-1"	12
REINFORCING STEEL FOR 2 WINGS					716 LBS
CLASS A CONCRETE					
2 WINGS					10.7 CY
1 HEADWALL					0.6 CY
1 END CURTAIN WALL					0.7 CY
TOTAL					12.0 CY

NOTES  
 G1 BARS IN HEADWALL ARE INCLUDED IN BARREL REINFORCING.  
 A 3 FOOT STRIP OF FILTER FABRIC SHALL BE ATTACHED TO THE FILL FACE OF THE WING COVERING THE ENTIRE LENGTH OF THE EXPANSION JOINT.

PROJECT NO. R-5739  
 NORTHAMPTON COUNTY  
 STATION: 324+27.00 -L-  
 SHEET 9 OF 10

7/23/2025

DOCUMENT NOT CONSIDERED FINAL UNLESS ALL SIGNATURES COMPLETED

TGS ENGINEERS  
 706 HILLSBOROUGH STREET  
 SUITE 200  
 RALEIGH, NC 27603  
 PH (919) 773-8887  
 CORP. LICENSE NO.: C-0275

STATE OF NORTH CAROLINA  
 DEPARTMENT OF TRANSPORTATION  
 RALEIGH

INLET WINGS  
 FOR  
 CONCRETE BOX CULVERT  
 H = 8'-0" SLOPE = 2:1  
 90° SKEW

REVISIONS						SHEET NO.
NO.	BY:	DATE:	NO.	BY:	DATE:	C3-9
1			3			TOTAL SHEETS
			4			10

STR. #3 STD. NO. CW9008

ASSEMBLED BY : ZCS	DATE : 6/22
CHECKED BY : MGC	DATE : 7/22
DRAWN BY : CCJ 10/99	REV. 6/19 MAA/THC
CHECKED BY : RWW 03/00	