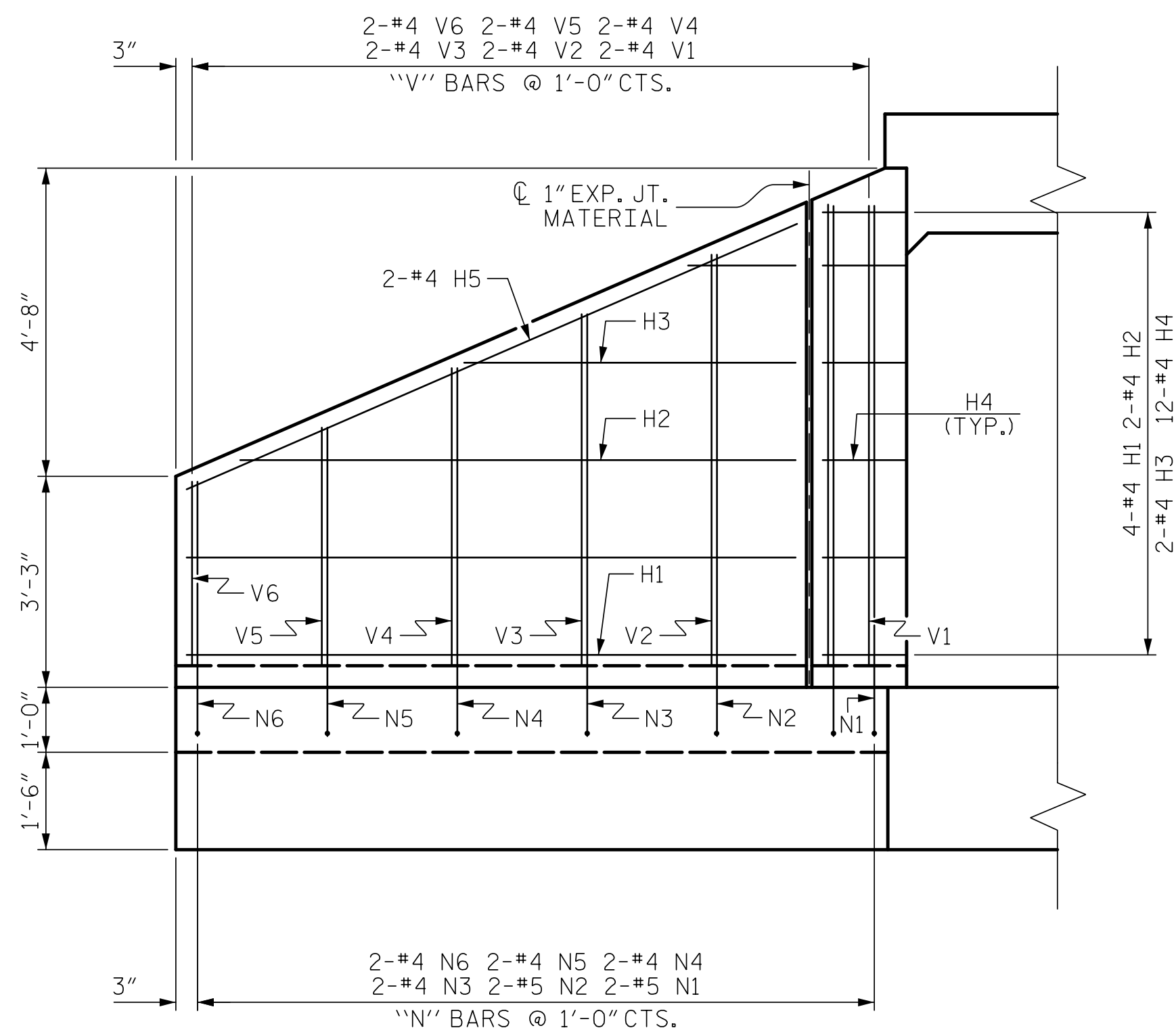
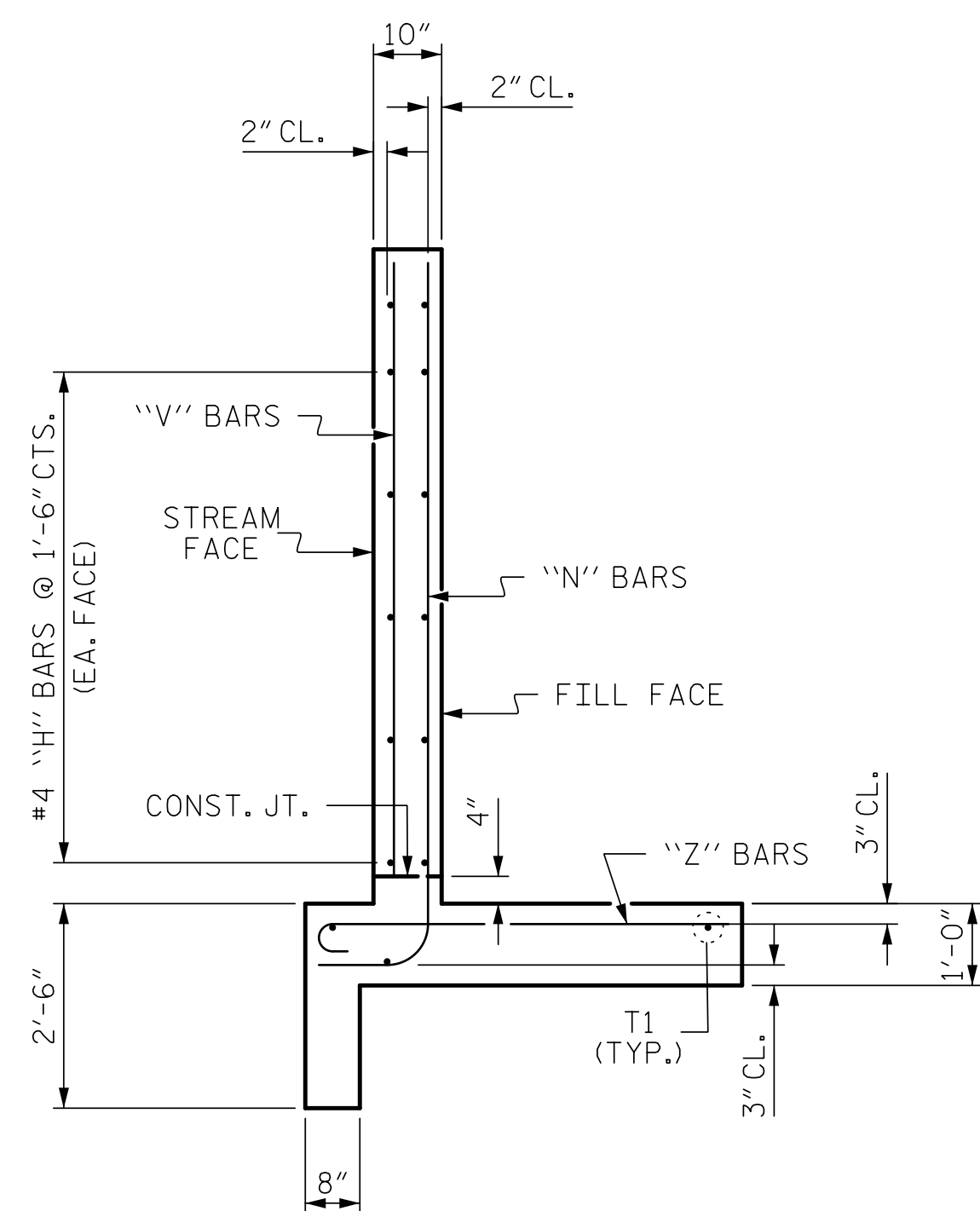


PLAN



ELEVATION



TYPICAL WING SECTION

BAR TYPES	
①	
②	
③	

BAR NO.	SIZE	TYPE	LENGTH	WEIGHT
H1	#4	STR	9'-4"	50
H2	#4	STR	8'-6"	23
H3	#4	STR	5'-1"	14
H4	#4	1	3'-3"	52
H5	#4	STR	10'-3"	27
N1	#5	2	8'-11"	37
N2	#5	2	8'-2"	34
N3	#4	2	7'-4"	20
N4	#4	2	6'-7"	18
N5	#4	2	5'-9"	15
N6	#4	2	4'-10"	13
S1	#6	STR	6'-0"	54
T1	#5	STR	11'-3"	70
V1	#4	STR	6'-10"	18
V2	#4	STR	6'-2"	16
V3	#4	STR	5'-4"	14
V4	#4	STR	4'-6"	12
V5	#4	STR	3'-8"	10
V6	#4	STR	2'-10"	8
Z1	#4	3	4'-11"	26
Z2	#4	3	4'-6"	12
Z3	#4	3	4'-0"	11
Z4	#4	3	3'-7"	10
Z5	#4	3	3'-1"	8

TOTAL REINFORCING STEEL FOR 2 WINGS		572 LBS
CLASS A CONCRETE		
2 WINGS		8.6 CY
1 HEADWALL		0.2 CY
1 END CURTAIN WALL		0.1 CY
TOTAL		8.9 CY

NOTES
 G1 BARS IN HEADWALL ARE INCLUDED IN BARREL REINFORCING.
 A 3 FOOT STRIP OF FILTER FABRIC SHALL BE ATTACHED TO THE FILL FACE OF THE WING COVERING THE ENTIRE LENGTH OF THE EXPANSION JOINT.

PROJECT NO. R-5739
 NORTHAMPTON COUNTY
 STATION: 38+74.00 -L-

SHEET 9 OF 10

STATE OF NORTH CAROLINA
 DEPARTMENT OF TRANSPORTATION
 RALEIGH

STANDARD WINGS
 FOR
 CONCRETE BOX CULVERT
 H = 7'-0" SLOPE = 2:1
 LEFT EXTENSION

7/23/2025

DOCUMENT NOT CONSIDERED FINAL UNLESS ALL SIGNATURES COMPLETED

TGS ENGINEERS
 706 HILLSBOROUGH STREET
 SUITE 200
 RALEIGH, NC 27603
 PH (919) 773-8887
 CORP. LICENSE NO.: C-0275

REVISIONS						SHEET NO.
NO.	BY:	DATE:	NO.	BY:	DATE:	TOTAL SHEETS
1			3			C1-9
2			4			10

ASSEMBLED BY :	ZCS	DATE :	4/22
CHECKED BY :	MGC	DATE :	7/22
DRAWN BY :	CCJ 10/99	REV. 6/19	MAA/THC
CHECKED BY :	RWW 03/00		