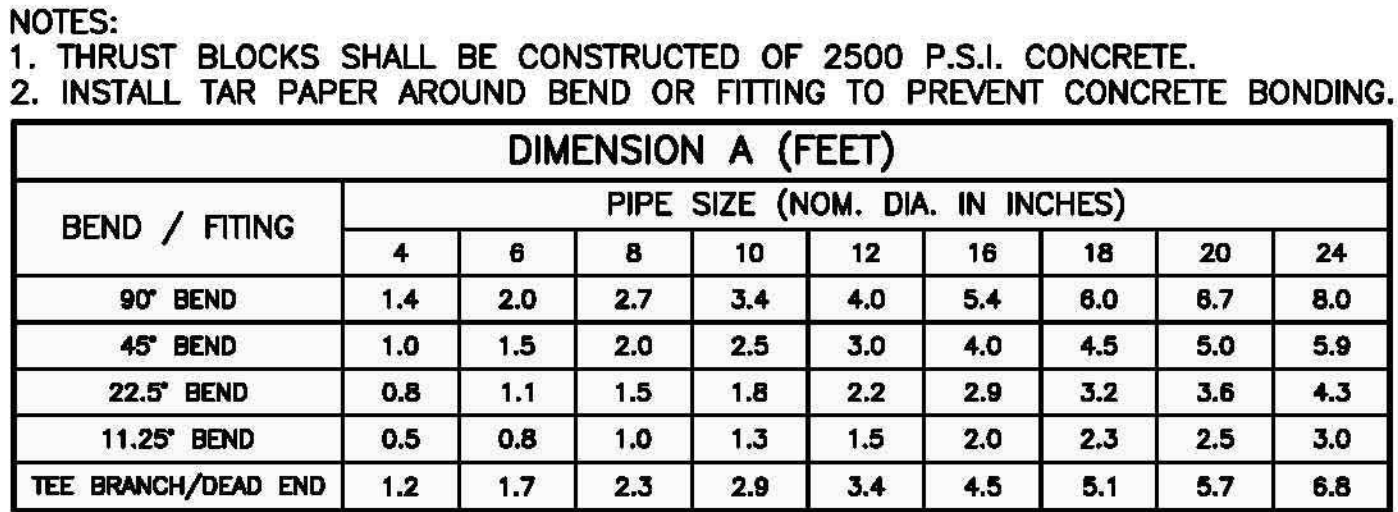
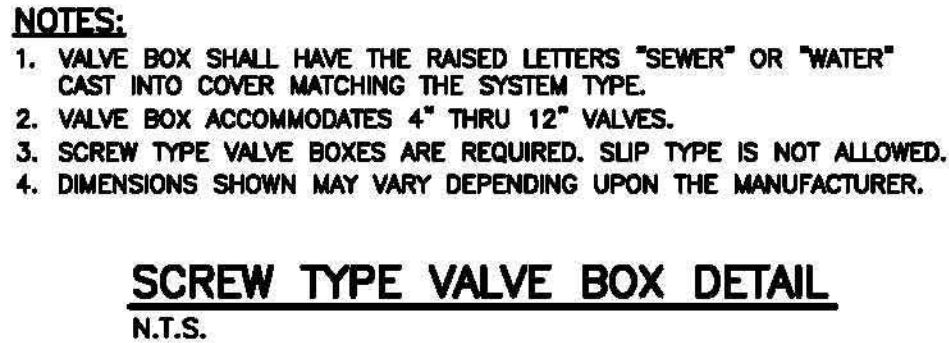
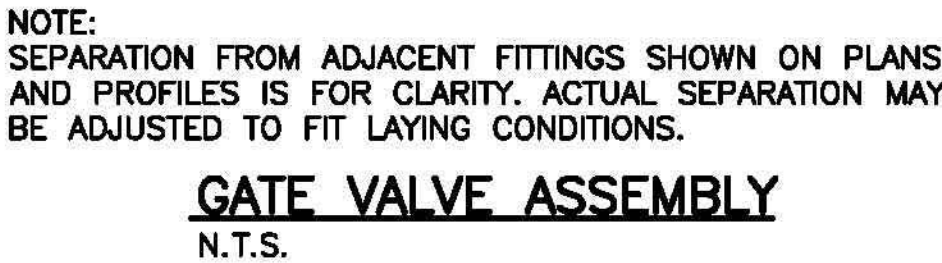
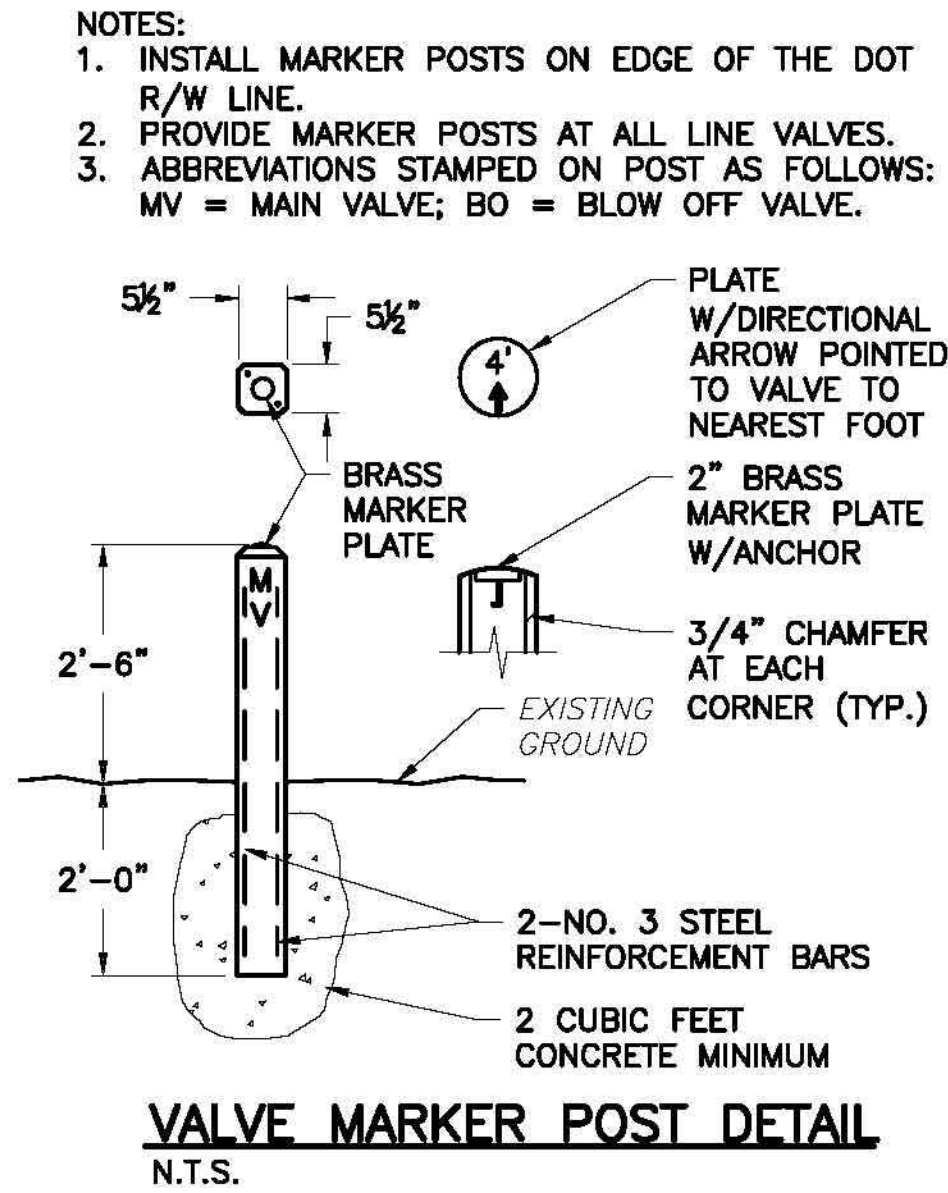







- NOTES:
1. LAYING CONDITIONS AS PER AWWA C600 AND C605 STANDARDS.
  2. BEDDING MATERIAL SHALL BE 4" MINIMUM THICKNESS, LOOSE SOIL (DEFINED AS NATIVE SOIL EXCAVATED FROM THE TRENCH), FREE FROM ROCKS AND SHALL PROVIDE UNIFORM SUPPORT FOR THE FULL LENGTH OF PIPE. COMPACT TO 95% MAXIMUM DENSITY.
  3. INITIAL BACKFILL SHALL BE LIGHTLY CONSOLIDATED IN MAXIMUM 6" LOOSE LIFTS, COMPACTED TO 95% OF MAXIMUM DENSITY.
  3. UNDER AREAS TO BE SEED OR SODDED, COMPACT SUCCEEDING LAYERS OF FINAL BACKFILL IN 12" LOOSE LIFTS TO 85% MAXIMUM DENSITY.
  3. UNDER STRUCTURES, PAVEMENTS AND ROAD SHOULDERS, COMPACT SUCCEEDING LAYERS OF FINAL BACKFILL IN 6" LOOSE LIFTS TO 95% MAXIMUM DENSITY EXCEPT COMPACT TOP 12" OF SUBGRADE TO 98% MAXIMUM DENSITY.
  4. PROVIDE #10 SOLID COPPER WIRE IN SUFFICIENT LENGTH TO BE CONTINUOUS OVER EACH SEPARATE RUN OF ALL BURIED PVC PIPING. AT VALVE BOXES, BRING WIRE TO WITHIN 6 IN. OF TOP OF BOX AND INSERT INTO BOX THROUGH DRILLED HOLE. NOT REQUIRED FOR DUCTILE IRON PIPE.
  5. INSTALL 3' WIDE DETECTOR TAPE AT 18" DEPTH. TAPE SHALL HAVE MIDDLE FOIL LAYER.



**CONCRETE THRUST BLOCK DETAIL  
FOR WATER MAIN HORIZONTAL BENDS AND TEES  
N.T.S.**



	<p><b>LKC Engineering, p.l.c.</b>          140 Aqua Shed Court          Aberdeen, NC 28315          O: 910.420.1437          F: 910.637.0096  <a href="mailto:lkc@engneering.com">lkc@engneering.com</a>          License No. P-1095</p>	<b>PROJECT REFERENCE NO.</b> <hr/> <b>B-5716</b>	<b>SHEET NO.</b> <hr/> <b>UC-3A</b>
	<b>DESIGNED BY:</b> BGL		
	<b>DRAWN BY:</b> RMG		
	<b>CHECKED BY:</b> BGL		
	<b>APPROVED BY:</b> -		
	<b>REVISED:</b> -		
<b>NORTH CAROLINA DEPARTMENT OF TRANSPORTATION</b>			
<b>UTILITIES ENGINEERING SEC. PHONE: (919) 707-6890 FAX: (919) 250-4151</b>		DocuSigned by:  <small>2584984960491611411</small> 6/10/2025	
<b>UTILITY CONSTRUCTION</b>			
<b>DOCUMENT NOT CONSIDERED FINAL UNLESS ALL SIGNATURES COMPLETED</b>			