

SURVEY CONTROL SHEET
W/ EXISTING CENTERLINE ALIGNMENTS PRIOR TO CONSTRUCTION

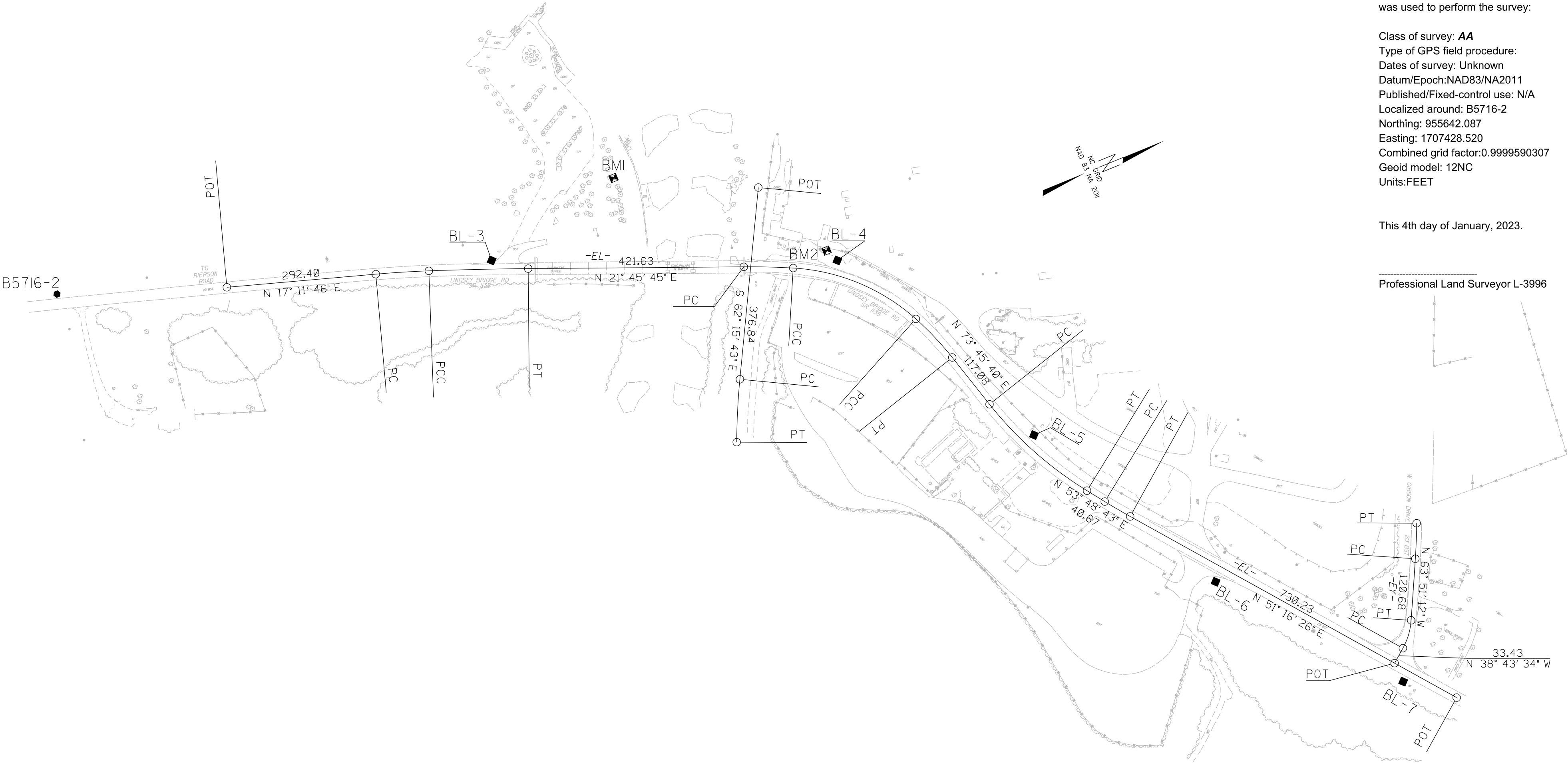
PROJECT REFERENCE NO.	SHEET NO.
B5716	RW02C-1
Location and Surveys	
<div>GEL SOLUTIONS <small>an Affiliate of THE GEL GROUP, INC.</small> 111 CREEK RIDGE ROAD SUITE C GREENSBORO, NC 27406 (336) 516-9840 WWW.GEL-SOLUTIONS.COM</div>	
PROJECT SURVEYOR	
<div> Professional Land Surveyor L-3996</div>	<div> Professional Engineer of NC, Inc. No. C-1938</div>
DOCUMENT NOT CONSIDERED FINAL UNLESS ALL SIGNATURES COMPLETED	

I, Parks H Icenhour Jr, PLS, certify that the Project Control was performed by other from an actual GPS survey made by others and the following information was used to perform the survey:

Class of survey: **AA**
Type of GPS field procedure:
Dates of survey: Unknown
Datum/Epoch: NAD83/NA2011
Published/Fixed-control use: N/A
Localized around: B5716-2
Northing: 955642.087
Easting: 1707428.520
Combined grid factor: 0.9999590307
Geoid model: 12NC
Units: FEET

This 4th day of January, 2023.

Professional Land Surveyor L-3996



SEE SHEET RW02C-3
FOR FURTHER
ALIGNMENT DETAILS

NOTES:

- PROJECT CONTROL WAS ESTABLISHED USING GNSS, THE GLOBAL NAVIGATION SATELLITE SYSTEM.
- THE SURVEY CONTROL DATA FOR THIS PROJECT HAS BEEN COMPILED FROM VARIOUS SOURCES. IF FURTHER INFORMATION REGARDING PROJECT CONTROL IS NEEDED, PLEASE CONTACT THE LOCATION AND SURVEYS UNIT.