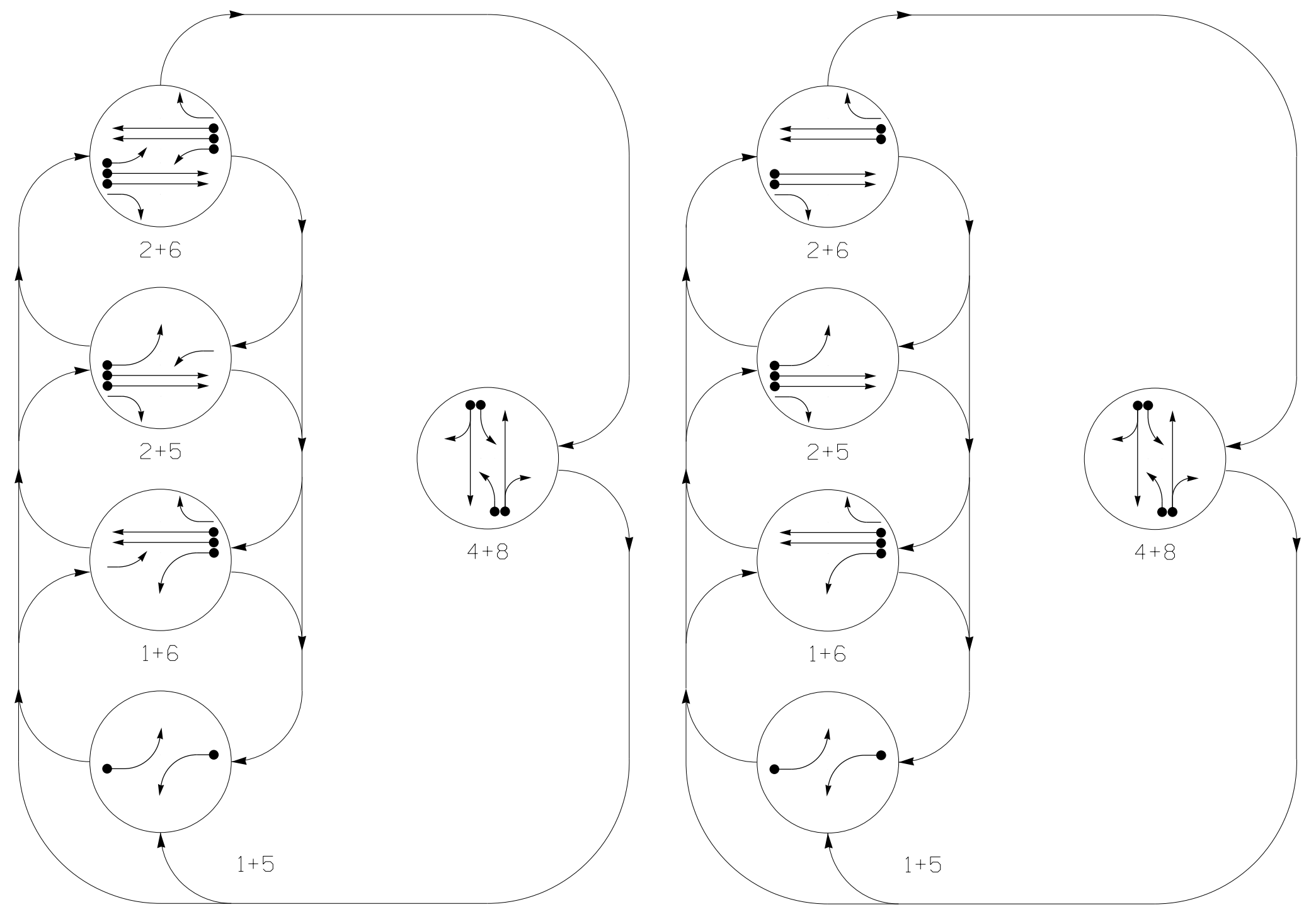


DEFAULT PHASING DIAGRAM

ALTERNATE PHASING DIAGRAM



PHASING DIAGRAM DETECTION LEGEND

- DETECTED MOVEMENT
UNDETECTED MOVEMENT (OVERLAP)
UNSIGNALIZED MOVEMENT
PEDESTRIAN MOVEMENT

DEFAULT PHASING TABLE OF OPERATION

Table with columns: SIGNAL FACE, PHASE (1+5, 1+6, 2+5, 2+6, 4+8, FLS, HSB, HSD, HSS, HST), and signal face indicators.

ALTERNATE PHASING TABLE OF OPERATION

Table with columns: SIGNAL FACE, PHASE (1+5, 1+6, 2+5, 2+6, 4+8, FLS, HSB, HSD, HSS, HST), and signal face indicators.

ASC/3 DETECTOR INSTALLATION CHART

Table with columns: ZONE, DETECTOR (SIZE, DISTANCE, TURNS, NEW LOOP), PROGRAMMING (PHASE, CALLING, EXTEND TIME, DELAY TIME, USE ADDED INITIAL, TYPE, SYSTEM LOOP, NEW CARD).

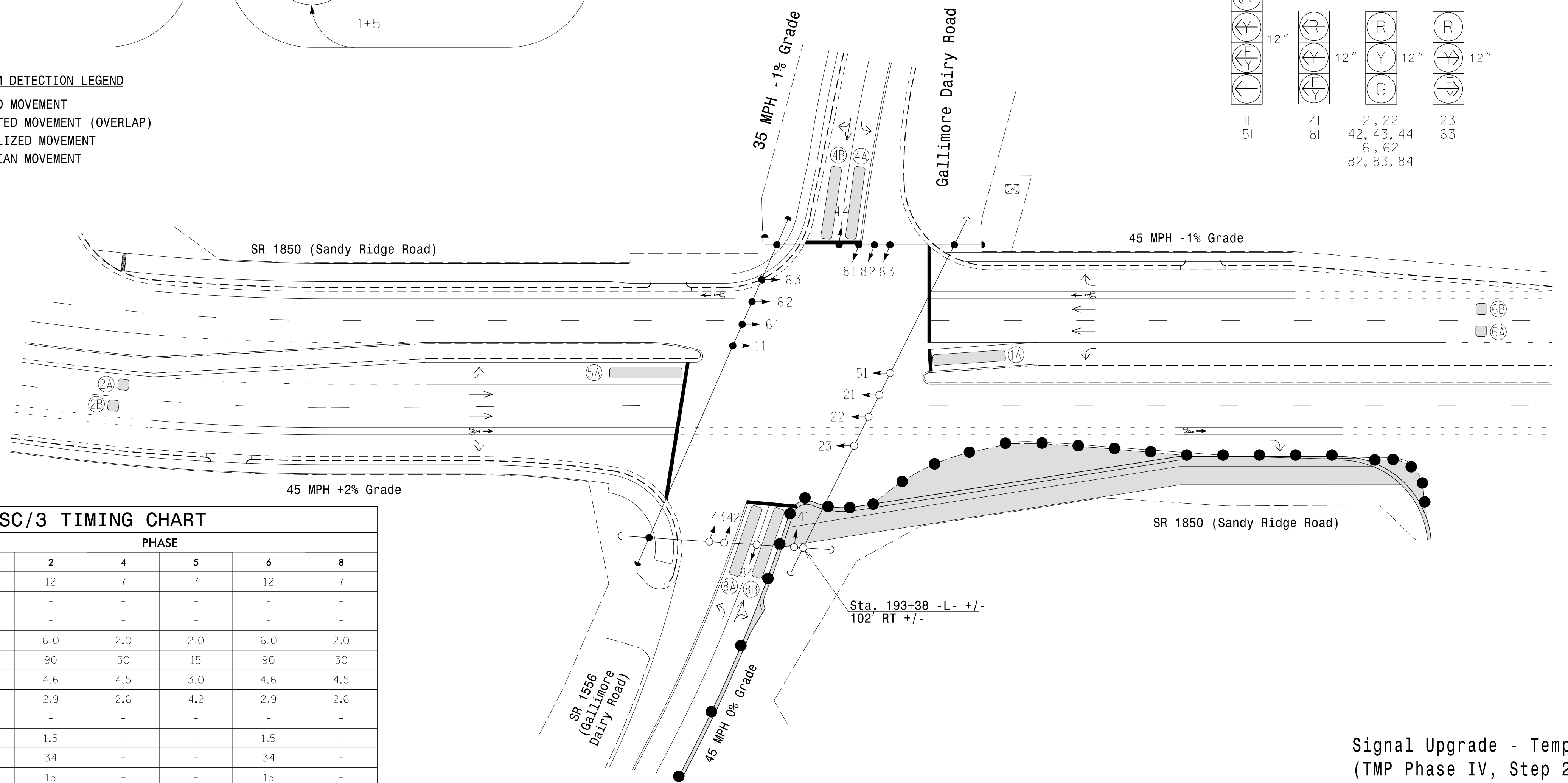
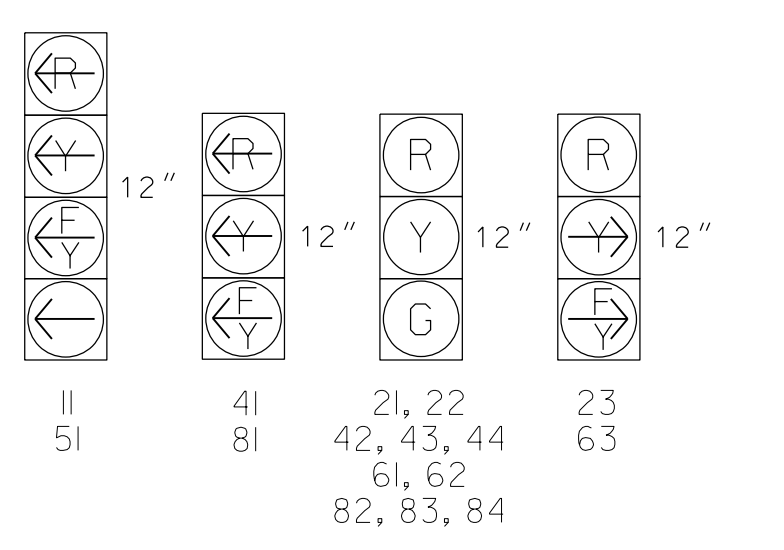
\* Non-Intrusive Detection Zone
# Disable delay during alternate phasing operation
# Disable phase call for loop(s) during alternate phasing operation

5 Phase Fully Actuated (Isolated) NOTES

- 1. Refer to "Roadway Standard Drawings NCDOT" dated January 2024 and "Standard Specifications for Roads and Structures" dated January 2024.
2. Do not program signal for late night flashing operation unless otherwise directed by the Engineer.
3. Phase 1 and/or phase 5 may be lagged.
4. Reposition existing signal heads numbered 11, 61, 62, 63, 81, 82 and 83.
5. Set all detector units to presence mode.
6. The Division Traffic Engineer will determine the hours of use for each phasing plan.
7. This intersection uses video detection. Maintain detectors according to the manufacturer's instructions to achieve the desired detection.

SIGNAL FACE I.D.

All Heads L.E.D.



ASC/3 TIMING CHART

Table with columns: FEATURE, PHASE (1, 2, 4, 5, 6, 8), and timing values for various features like Min Green, Walk, Ped Clear, etc.

LEGEND

- PROPOSED: Traffic Signal Head, Modified Signal Head, Pedestrian Signal Head, Signal Pole with Guy, Signal Pole with Sidewalk Guy, Inductive Loop Detector, Non-Intrusive Detection Zone, Controller & Cabinet, Junction Box, 2-in Underground Conduit, Right of Way, Directional Arrow, Construction Zone, Construction Zone Drums, Curb Ramp.
EXISTING: N/A, N/A, N/A, N/A, N/A, N/A, N/A, N/A, N/A, N/A, N/A, N/A.

Signal Upgrade - Temporary Design 3 (TMP Phase IV, Step 2)

AtkinsRéalis logo and address: 1616 EAST MILLBROOK ROAD, SUITE 160 RALEIGH, NORTH CAROLINA 27609 (919) 876-6888 NCBEES #F-0326

Professional Engineer Seal for James T. Stiff, State of North Carolina, License No. 056276.

Project information: SR 1850 (Sandy Ridge Road) at SR 1556 (Gallimore Dairy Road), Division 7 Guilford County High Point, Plan Date: January 2025, Prepared by: JT Stiff, Reviewed by: AM Encarnacion, PL Alexander.

DOCUMENT NOT CONSIDERED FINAL UNLESS ALL SIGNATURES COMPLETED. Includes signature of James T. Stiff dated 3/14/2025.

13-MAR-2025 11:05 PW:///S:\03036343\_0001\FIS-com\ATKMANCO\Documents\Roads and Bridges\Projects\100059632\_USR\_S19 and ITS\Task 05-11\_Signals\07111513\_s19\_dsn\_2023mdd.dgn