

8/26/24



LOCATION SKETCH

INFORMATION INDICATED ON THE LOCATION SKETCH SHALL BE CONSIDERED GENERAL INFORMATION ONLY. CONTRACTOR SHALL CONFIRM, THROUGH OTHER SOURCES, SPECIFIC INFORMATION REGARDING BRIDGES, ROADWAY, UTILITIES, THE SURROUNDING AREA, AND ANY OTHER ASPECTS THAT MAY BE NECESSARY TO PERFORM AND COMPLETE THE PROJECT.

BRIDGE COORDINATES	
LATITUDE	LONGITUDE
34°-19'-20.38"	78°-27'-18.10"

GENERAL NOTES

SEE CONTRACT DOCUMENTS FOR LANE WIDTHS, SEQUENCING AND OTHER TRAFFIC CONTROL MEASURES FOR STAGING OF OVERLAY SURFACE PREPARATION AND POLYMER CONCRETE (PC) PLACEMENT.

PRIOR TO BEGINNING WORK, THE CONTRACTOR SHALL SUBMIT FOR REVIEW AND APPROVAL A COMPLETE SEQUENCE OF TASKS FOR EACH OPERATION AFFECTING THE BRIDGE SURFACE AND/OR TRAFFIC.

THE CONTRACTOR'S ATTENTION IS CALLED TO THE FACT THAT DUE TO THE NATURE OF PRESERVATION PROJECTS, THE EXTENT OF WORK CANNOT ALWAYS BE ACCURATELY DETERMINED PRIOR TO COMMENCEMENT OF WORK. REPAIR LOCATIONS AND ESTIMATES OF QUANTITIES ARE GIVEN WITH THE BEST INFORMATION AVAILABLE. IF ADDITIONAL REPAIRS NOT SHOWN ON THE DRAWINGS ARE DEEMED NECESSARY BY THE ENGINEER, THE ENGINEER SHALL NOTE ON THE DRAWINGS THE APPROXIMATE LOCATION AND DESCRIPTION OF THE REPAIR.

FOR OTHER DESIGN DATA AND GENERAL NOTES, SEE SHEET SN.

FOR FALSEWORK AND FORMWORK, SEE SPECIAL PROVISIONS.

FOR SUBMITTAL OF WORKING DRAWINGS, SEE SPECIAL PROVISIONS.

FOR CRANE SAFETY, SEE SPECIAL PROVISIONS.

FOR GROUT FOR STRUCTURES, SEE SPECIAL PROVISIONS.

EXISTING DIMENSIONS AND BRIDGE CONDITION ARE FROM THE BEST INFORMATION AVAILABLE. THE CONTRACTOR SHALL FIELD VERIFY THE INFORMATION SHOWN ON THE PLANS AND NOTIFY THE ENGINEER IF ACTUAL DIMENSIONS AND CONDITIONS DIFFER.

ALL PAVEMENT MARKING WILL BE IN ACCORDANCE WITH THE CONTRACT DOCUMENTS.

THE CONTRACTOR SHALL HAVE NO CLAIM WHATSOEVER AGAINST THE DEPARTMENT FOR ANY DELAYS OR ADDITIONAL COST INCURRED BASED ON DIFFERENCES BETWEEN WHAT IS SHOWN ON THE PLANS AND THE ACTUAL CONDITIONS AT THE PROJECT SITE.

EXISTING JOINTS AND DECK DRAINS SHALL BE SEALED PRIOR TO BEGINNING SURFACE PREPARATIONS OF THE BRIDGE DECK. THE CONTRACTOR SHALL TAKE CARE THAT ANY CONSTRUCTION DEBRIS THAT COLLECTS IN THE DRAINS IS CONTAINED. DRAINS IN SHOULDERS OF ADJACENT TRAVEL LANES SHALL BE KEPT FREE AND CLEAR OF DEBRIS.

IT IS THE CONTRACTOR'S RESPONSIBILITY TO FOLLOW ALL STATE AND FEDERAL SAFETY REQUIREMENTS.

LONGITUDINAL CONSTRUCTION JOINTS OF OVERLAYS SHALL BE LOCATED ALONG THE CENTERLINE OR EDGE OF TRAVEL LANES.

WORK ON THE BRIDGE SHALL BE PERFORMED SO AS NOT TO ALLOW DEBRIS TO FALL BELOW, EXCEPT WHERE THE CONTRACTOR'S PLAN USED PLATFORMS, NETS, SCREEN OR OTHER PROTECTIVE DEVICES TO CATCH THE MATERIAL. THE CONTRACTOR SHALL SUBMIT PLANS FOR CONSTRUCTION IN ACCORDANCE WITH ARTICLE 402-2 OF THE STANDARD SPECIFICATIONS AND THE PROJECT SPECIAL PROVISIONS. ANY DAMAGE TO EXISTING REINFORCING STEEL DURING CONTRACTOR'S OPERATIONS SHALL BE REPAIRED AS DIRECTED BY THE ENGINEER AND PERFORMED AT NO ADDITIONAL COST TO THE DEPARTMENT.

FOR CLASS 1B SURFACE PREPARATION, SEE BRIDGE DECK ASPHALT OVERLAY SPECIAL PROVISION.

FOR ASPHALT PLUG JOINTS FOR PRESERVATION, SEE SPECIAL PROVISIONS.

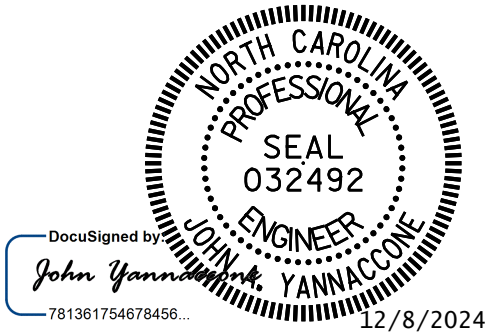
FOR PILE ENCAPSULATION, SEE SPECIAL PROVISIONS.

FOR BRIDGE DECK WATERPROOFING MEMBRANE-SPRAY APPLIED, SEE SPECIAL PROVISIONS.

FOR CONTROL OF TRAFFIC AND LIMITS OF PHASING OF CONSTRUCTION, SEE CONTRACT DOCUMENTS.

PROJECT NO. **HI-0018**
COLUMBUS COUNTY
BRIDGE NO. **230388**

SHEET 2 OF 2



STATE OF NORTH CAROLINA
DEPARTMENT OF TRANSPORTATION
RALEIGH

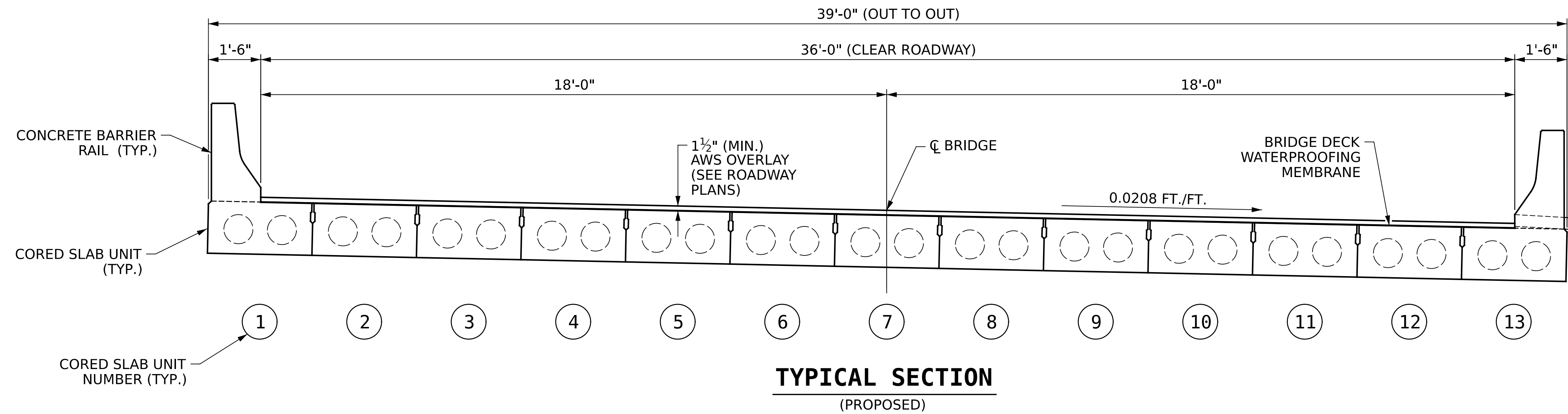
GENERAL DRAWING
FOR BRIDGE ON
US 74 - US 76 BYP EBL
OVER FRIAR SWAMP

DRAWN BY : **R.L.PUTEK** DATE : **08/2024**
CHECKED BY : **J.A.YANNACCONE** DATE : **08/2024**

GANNETT FLEMING

One Glenwood Avenue
Suite 900
Raleigh, NC 27603
919-420-7660
NC Lic. No. F-0270

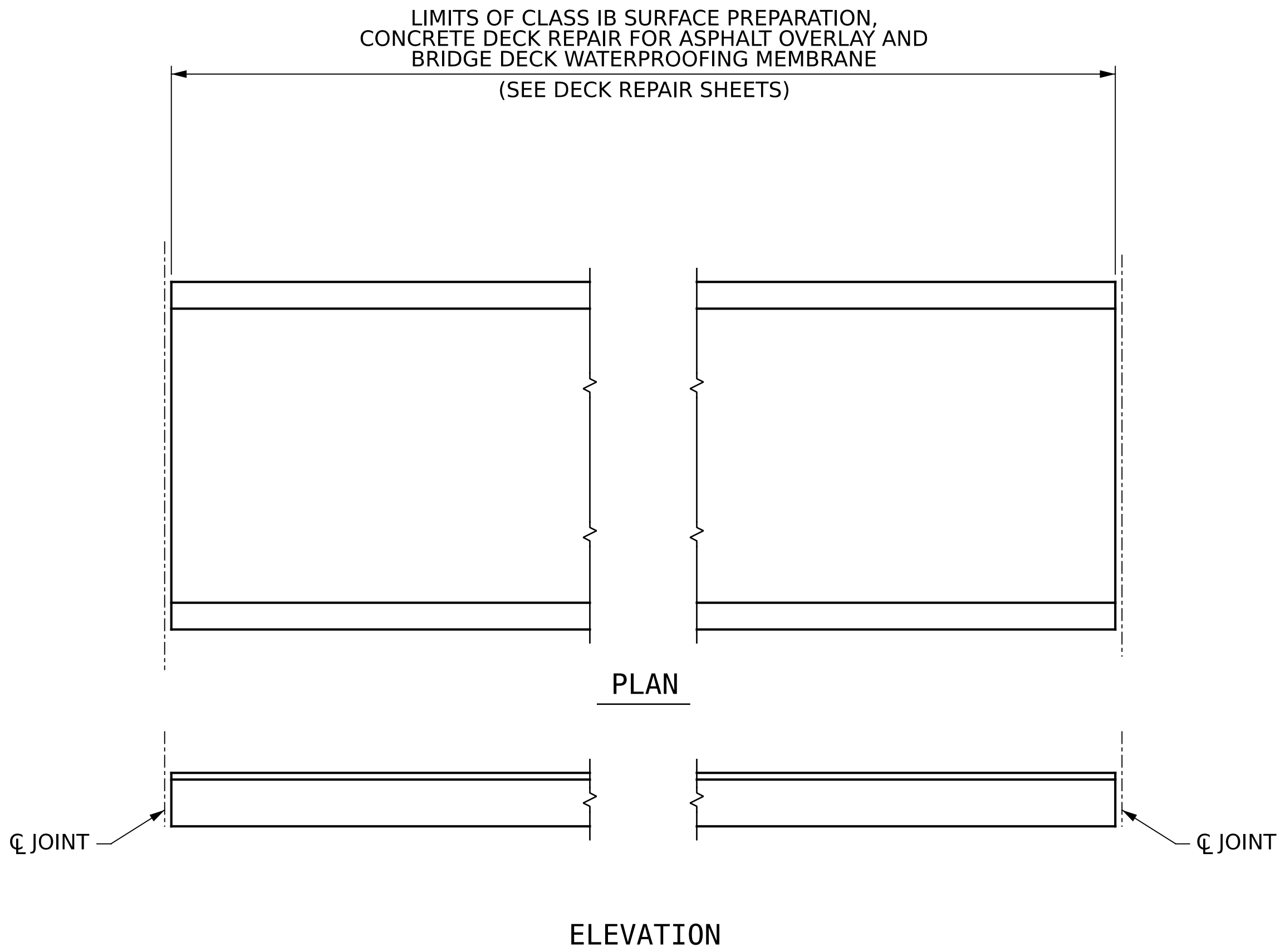
REVISIONS						SHEET NO.
NO.	BY:	DATE:	NO.	BY:	DATE:	
1			3			S10-02 TOTAL SHEETS 79
2			4			



NOTES:

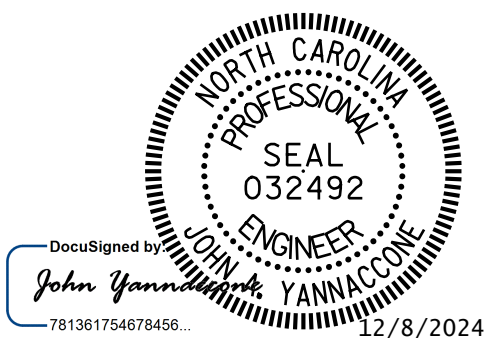
SEE CONTRACT DOCUMENTS FOR LANE WIDTHS, SEQUENCING AND OTHER TRAFFIC CONTROL MEASURES FOR STAGING OF OVERLAY SURFACE PREPARATION AND ASPHALT OVERLAY.

FOR BRIDGE DECK WATERPROOFING MEMBRANE-SPRAY APPLIED, SEE SPECIAL PROVISIONS.



PAY LIMITS FOR OVERLAY BID ITEMS

PROJECT NO. **HI-0018**
COLUMBUS COUNTY
BRIDGE NO. **230388**



STATE OF NORTH CAROLINA
DEPARTMENT OF TRANSPORTATION
RALEIGH

**TYPICAL SECTION AND
SURFACE PREPARATION
DETAILS**

DRAWN BY : **R.L.PUTEK** DATE : **08/2024**
CHECKED BY : **J.A.YANNACCONE** DATE : **08/2024**

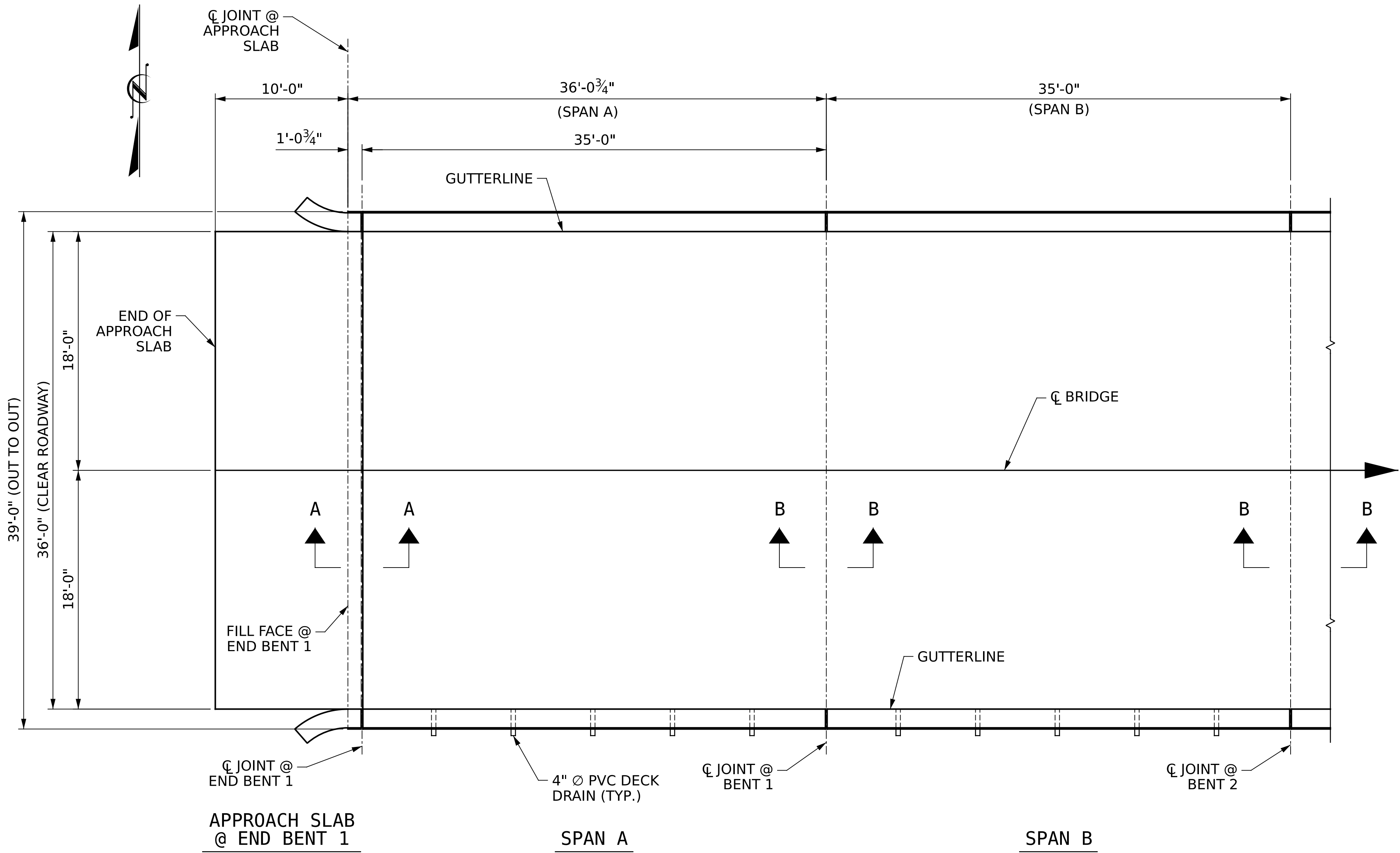


One Glenwood Avenue
Suite 900
Raleigh, NC 27603
919-420-7660
NC Lic. No. F-0270

DOCUMENT NOT CONSIDERED
FINAL UNLESS ALL
SIGNATURES COMPLETED

REVISIONS						SHEET NO.
NO.	BY:	DATE:	NO.	BY:	DATE:	
1			3			S10-03
2			4			
TOTAL SHEETS						79

8/26/21



PLAN

NOTES

REPAIR LOCATIONS AND ESTIMATED QUANTITIES ARE GIVEN WITH THE BEST INFORMATION AVAILABLE. IF ADDITIONAL REPAIRS NOT SHOWN ON THE DRAWINGS ARE DEEMED NECESSARY BY THE ENGINEER, THE ENGINEER WILL NOTE ON THE DRAWINGS THE APPROXIMATE LOCATIONS AND DESCRIPTION OF THE REPAIRS AND ADJUST THE ACTUAL QUANTITIES ENTERED INTO THE REPAIR QUANTITY TABLE.

FOR SECTION A-A AND B-B. SEE "ASPHALT PLUG JOINT DETAILS" SHEET.

FOR CLASS IB SURFACE PREPARATION, SEE BRIDGE DECK ASPHALT OVERLAY SPECIAL PROVISION.

FOR BRIDGE DECK WATERPROOFING MEMBRANE-SPRAY APPLIED, SEE SPECIAL PROVISIONS.

FOR ASPHALT OVERLAY, SEE ROADWAY PLANS.

AS-BUILT QUANTITY REPAIR TABLE

DECK SURFACE REPAIR & APPROACH SLAB REPAIR

		ESTIMATE	ACTUAL
CLASS IB SURFACE PREPARATION	APPROACH SLAB @ END BENT 1	40.0 SQ. YDS.	
	SPAN A	144.3 SQ. YDS.	
	SPAN B	140.0 SQ. YDS.	
BRIDGE DECK WATERPROOFING MEMBRANE-SPRAY APPLIED	APPROACH SLAB @ END BENT 1	6.0 SQ. YDS.	
	SPAN A	144.3 SQ. YDS.	
	SPAN B	140.0 SQ. YDS.	

CLASS IB SURFACE PREPARATION

PROJECT NO. **HI-0018**

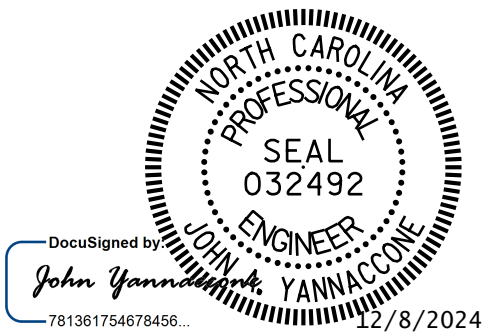
COLUMBUS COUNTY

BRIDGE NO. **230388**

SHEET 1 OF 2

STATE OF NORTH CAROLINA
DEPARTMENT OF TRANSPORTATION
RALEIGH

DECK REPAIRS
SPAN A W/APPROACH SLAB
& SPAN B



DRAWN BY : **R.L.PUTEK** DATE : **08/2024**
CHECKED BY : **J.A.YANNACCONE** DATE : **08/2024**



One Glenwood Avenue
Suite 900
Raleigh, NC 27603
919-420-7660
NC Lic. No. F-0270

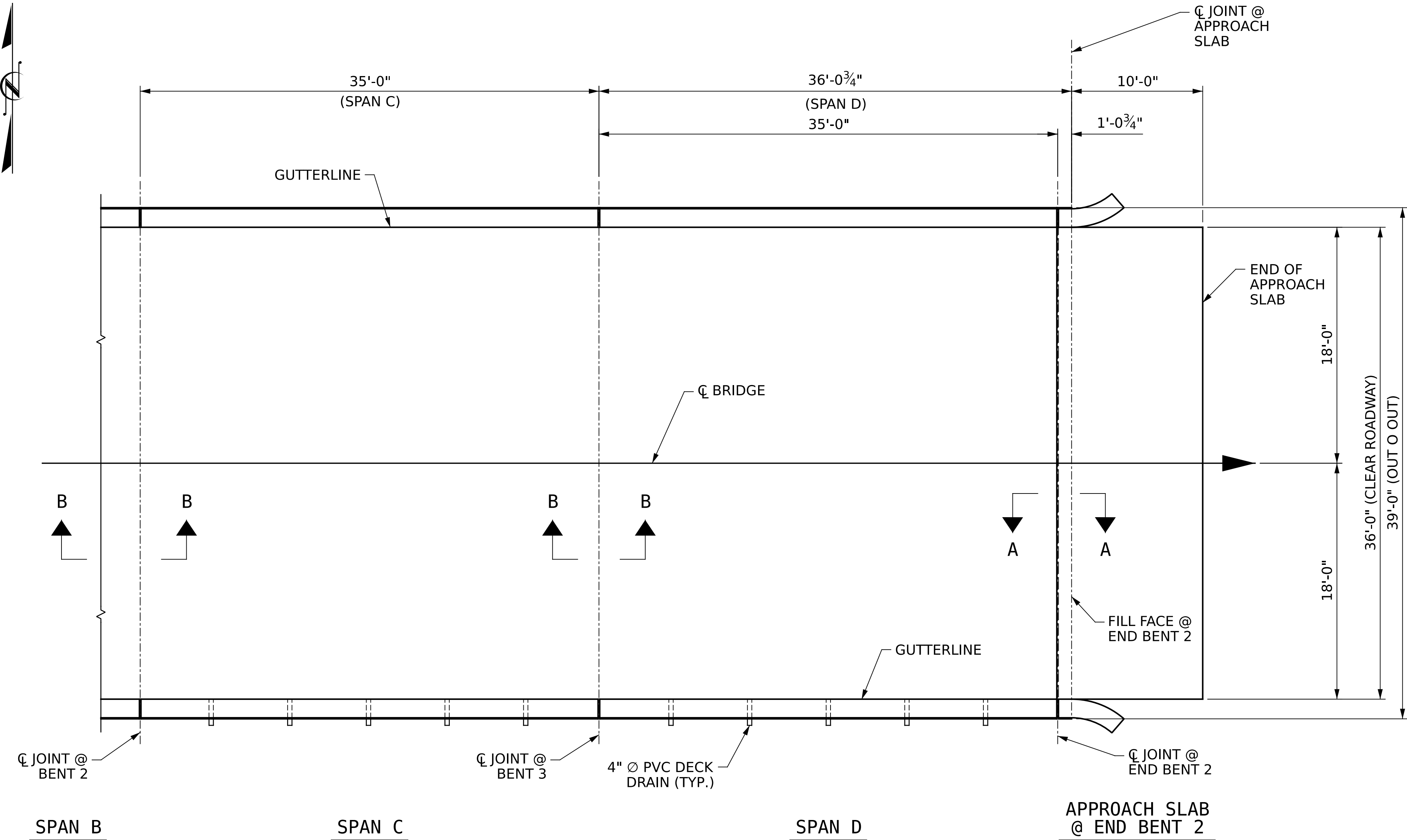
DOCUMENT NOT CONSIDERED
FINAL UNLESS ALL
SIGNATURES COMPLETED

REVISIONS						SHEET NO.
NO.	BY:	DATE:	NO.	BY:	DATE:	S10-04
1			3			TOTAL SHEETS
2			4			79

8/26/21

+

+



PLAN

NOTES

REPAIR LOCATIONS AND ESTIMATED QUANTITIES ARE GIVEN WITH THE BEST INFORMATION AVAILABLE. IF ADDITIONAL REPAIRS NOT SHOWN ON THE DRAWINGS ARE DEEMED NECESSARY BY THE ENGINEER, THE ENGINEER WILL NOTE ON THE DRAWINGS THE APPROXIMATE LOCATIONS AND DESCRIPTION OF THE REPAIRS AND ADJUST THE ACTUAL QUANTITIES ENTERED INTO THE REPAIR QUANTITY TABLE.

FOR SECTION A-A AND B-B. SEE "ASPHALT PLUG JOINT DETAILS" SHEET.

FOR CLASS IB SURFACE PREPARATION, SEE BRIDGE DECK ASPHALT OVERLAY SPECIAL PROVISION.

FOR BRIDGE DECK WATERPROOFING MEMBRANE-SPRAY APPLIED, SEE SPECIAL PROVISIONS.

FOR ASPHALT OVERLAY, SEE ROADWAY PLANS.

AS-BUILT QUANTITY REPAIR TABLE

DECK SURFACE REPAIR & APPROACH SLAB REPAIR

		ESTIMATE	ACTUAL
CLASS IB SURFACE PREPARATION			
	SPAN C	140.0 SQ. YDS.	
	SPAN D	144.3 SQ. YDS.	
	APPROACH SLAB @ END BENT 2	40.0 SQ. YDS.	
BRIDGE DECK WATERPROOFING MEMBRANE-SPRAY APPLIED			
	SPAN C	140.0 SQ. YDS.	
	SPAN D	144.3 SQ. YDS.	
	APPROACH SLAB @ END BENT 2	6.0 SQ. YDS.	

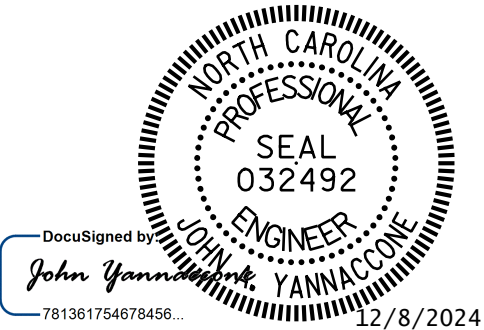
CLASS IB SURFACE PREPARATION

DRAWN BY : R.L.PUTEK DATE : 08/2024
CHECKED BY : J.A.YANNACCONE DATE : 08/2024



One Glenwood Avenue
Suite 900
Raleigh, NC 27603
919-420-7660
NC Lic. No. F-0270

DOCUMENT NOT CONSIDERED
FINAL UNLESS ALL
SIGNATURES COMPLETED



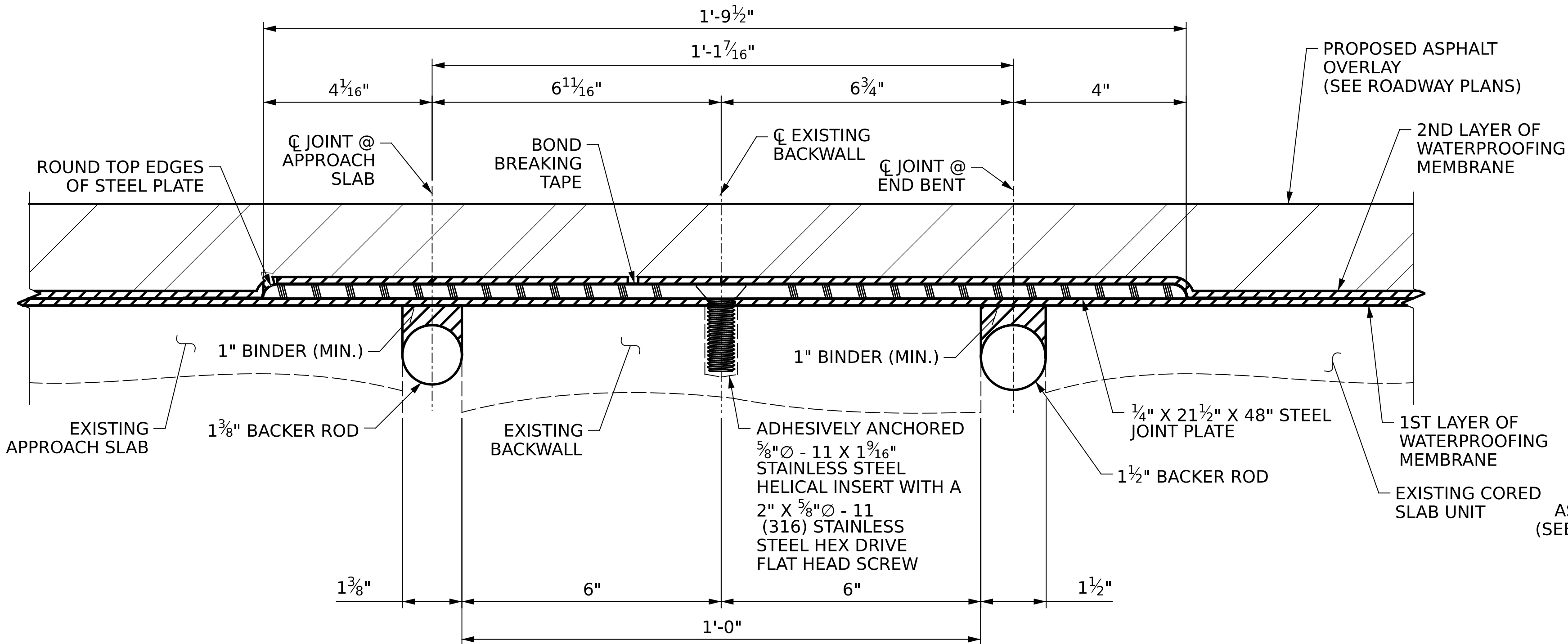
PROJECT NO. **HI-0018**
COLUMBUS COUNTY
BRIDGE NO. **230388**

SHEET 2 OF 2

STATE OF NORTH CAROLINA
DEPARTMENT OF TRANSPORTATION
RALEIGH

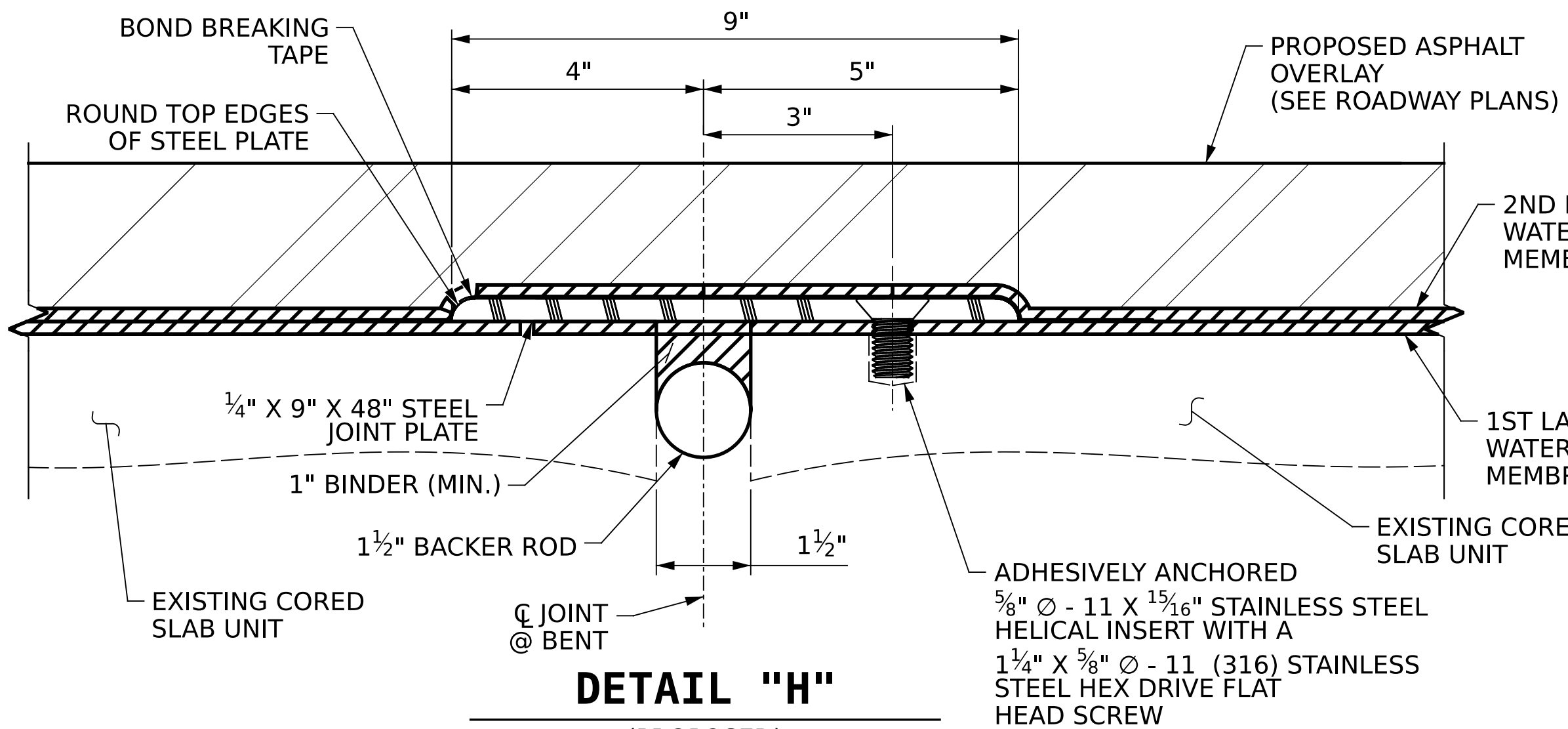
DECK REPAIRS
SPAN C &
SPAN D W/APPROACH SLAB

REVISIONS						SHEET NO.
NO.	BY:	DATE:	NO.	BY:	DATE:	S10-05
1			3			TOTAL SHEETS
2			4			79



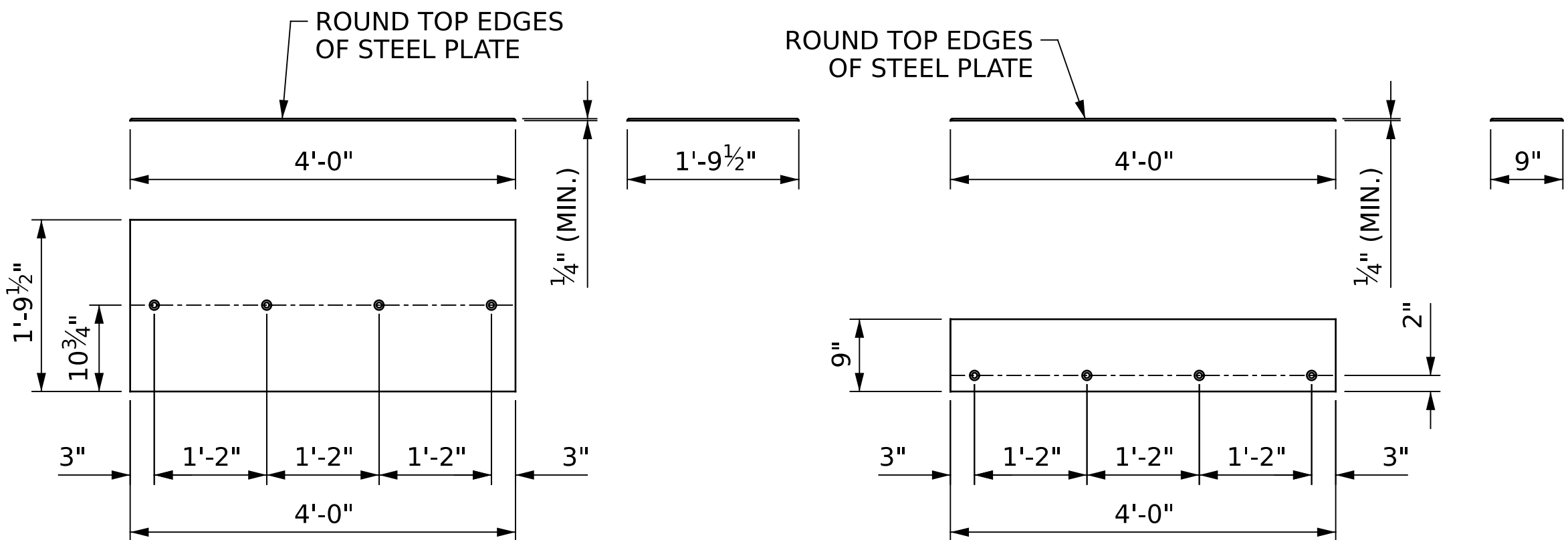
DETAIL "G"

(PROPOSED)



DETAIL "H"

(PROPOSED)



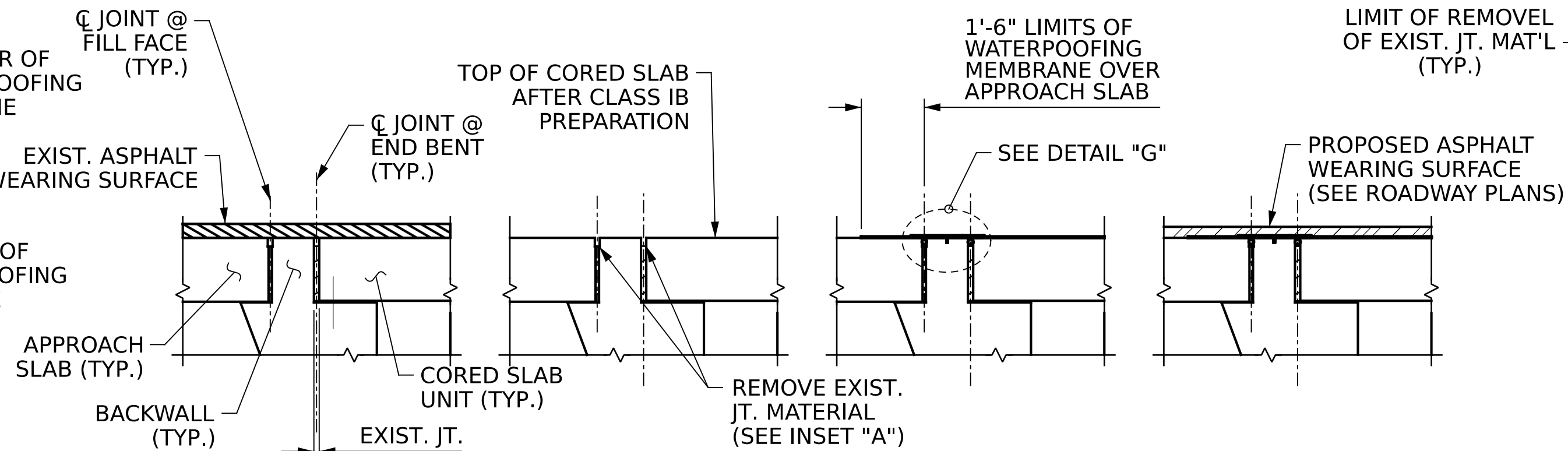
STEEL JOINT PLATE

END BENTS

(18 REQ'D)

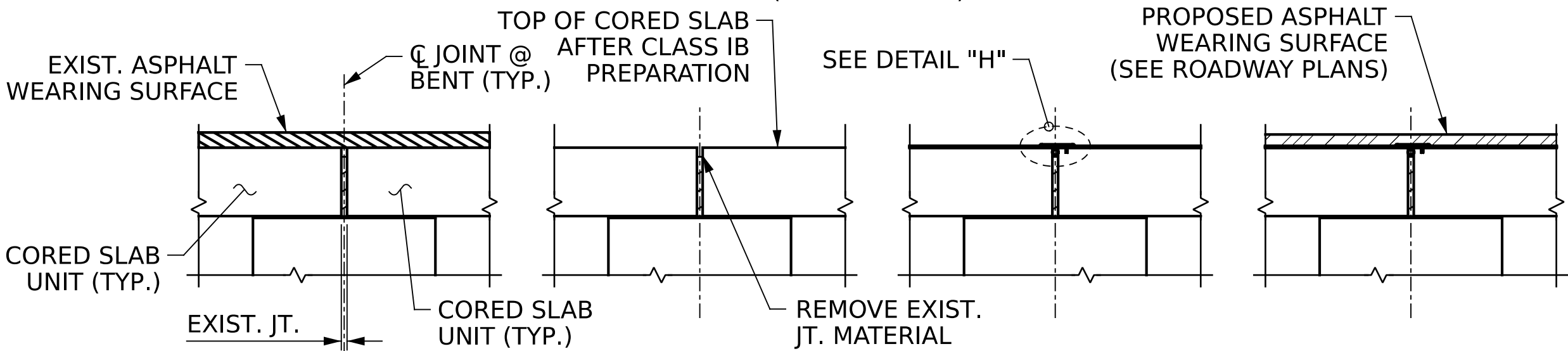
BENTS

(27 REQ'D)



SECTION A-A

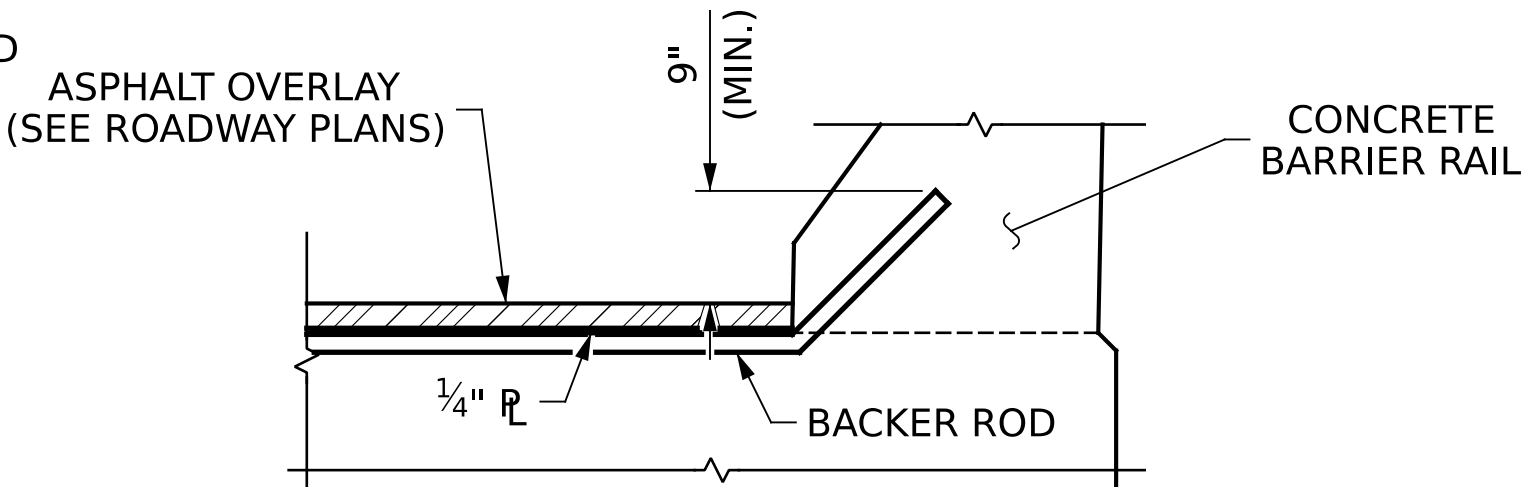
(AT END BENTS)



SECTION B-B

(AT BENTS)

AS-BUILT SUMMARY OF QUANTITIES	
LOCATION	ASPHALT PLUG JOINT FOR PRESERVATION (LIN. FT.)
APPROACH SLAB @ END BENT 1	38.5
END BENT 1	38.5
BENT 1	38.5
BENT 2	38.5
BENT 3	38.5
END BENT 2	38.5
APPROACH SLAB @ END BENT 2	38.5



SECTION AT GUTTERLINE

(PROPOSED PLUG JOINT)

NOTES :

THE CONTRACTOR SHALL FIELD VERIFY THE EXISTING JOINT OPENING PRIOR TO ORDERING JOINT MATERIALS.

THE MANUFACTURER IS TO PROVIDE THE NOMINAL UNCOMPRESSED SEAL WIDTH OF THE BACKER ROD FOR THE EXISTING JOINT SIZE AND ACCOMODATE THE MINIMUM EXPANSION SHOWN ON THE PLANS.

ONLY ASPHALTIC PLUG JOINTS THAT ARE APPROVED ON NCDOT'S APPROVED PRODUCTS LIST SHALL BE USED. CONTACT SMU PRESERVATION AND REPAIR AT LEAST 3 DAYS PRIOR TO JOINT INSTALLATION.

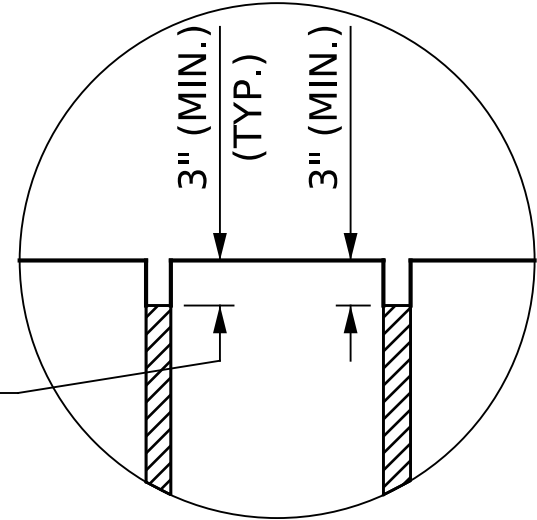
ASPHALTIC PLUG JOINTS SHALL BE INSTALLED AS PER THE MANUFACTURER'S RECOMMENDATIONS.

A MANUFACTURER'S CERTIFIED TRAINED REPRESENTATIVE SHALL BE PRESENT DURING THE INSTALLATION OF THE FIRST JOINT OF THE PROJECT, OR UNTIL THE ENGINEER IS SATISFIED WITH THE INSTALL PROCESS.

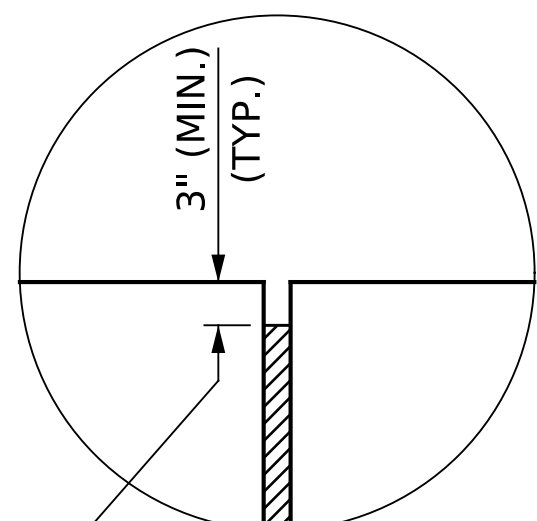
THE CONTRACTOR SHALL TAKE CARE DURING JOINT REHAB OPERATIONS NOT TO ALLOW ANY MATERIAL FALL BELOW THE BRIDGE. ANY MATERIAL THAT FALLS BELOW THE BRIDGE SHALL BE CONTAINED, REMOVED AND DISPOSED OF BY THE CONTRACTOR AT NO EXTRA COST TO THE DEPARTMENT. IF THE ENGINEER DETERMINES THAT THE PROTECTIVE DEVICES ARE NOT ADEQUATE OR NOT BEING EMPLOYED, THE WORK SHALL BE SUSPENDED UNTIL ADEQUATE PROTECTION IS PROVIDED.

THE STEEL BRIDGE PLATE SHALL BE A MINIMUM OF 36 KSI STEEL. THE STEEL BRIDGE PLATE THICKNESS SHALL BE A MINIMUM OF 1/4".

FOR ASPHALT PLUG JOINTS FOR PRESERVATION, SEE SPECIAL PROVISIONS



INSET "A"

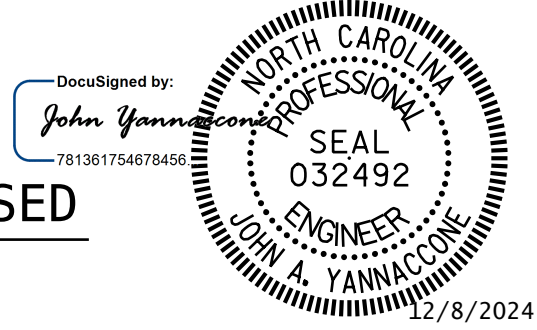


INSET "B"

PROJECT NO. **HI-0018**
COLUMBUS COUNTY
BRIDGE NO. **230388**

STATE OF NORTH CAROLINA
DEPARTMENT OF TRANSPORTATION
RALEIGH

ASPHALT PLUG JOINT
DETAILS

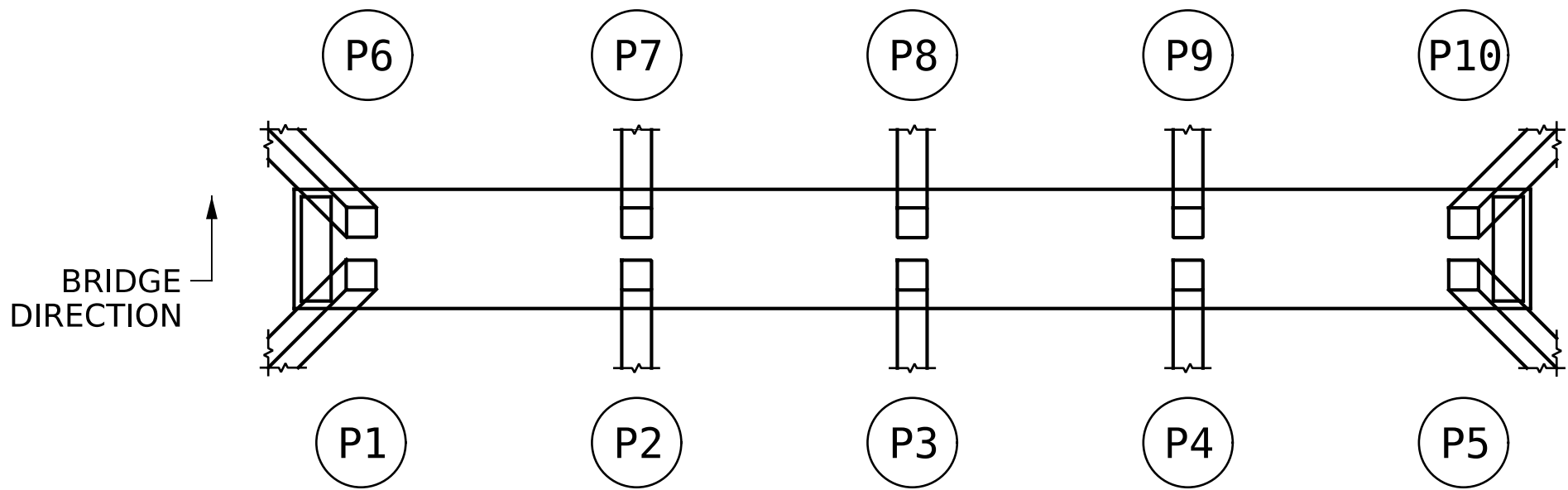


One Glenwood Avenue
Suite 900
Raleigh, NC 27603
919-420-7660
NC Lic. No. F-0270

DOCUMENT NOT CONSIDERED
FINAL UNLESS ALL
SIGNATURES COMPLETED

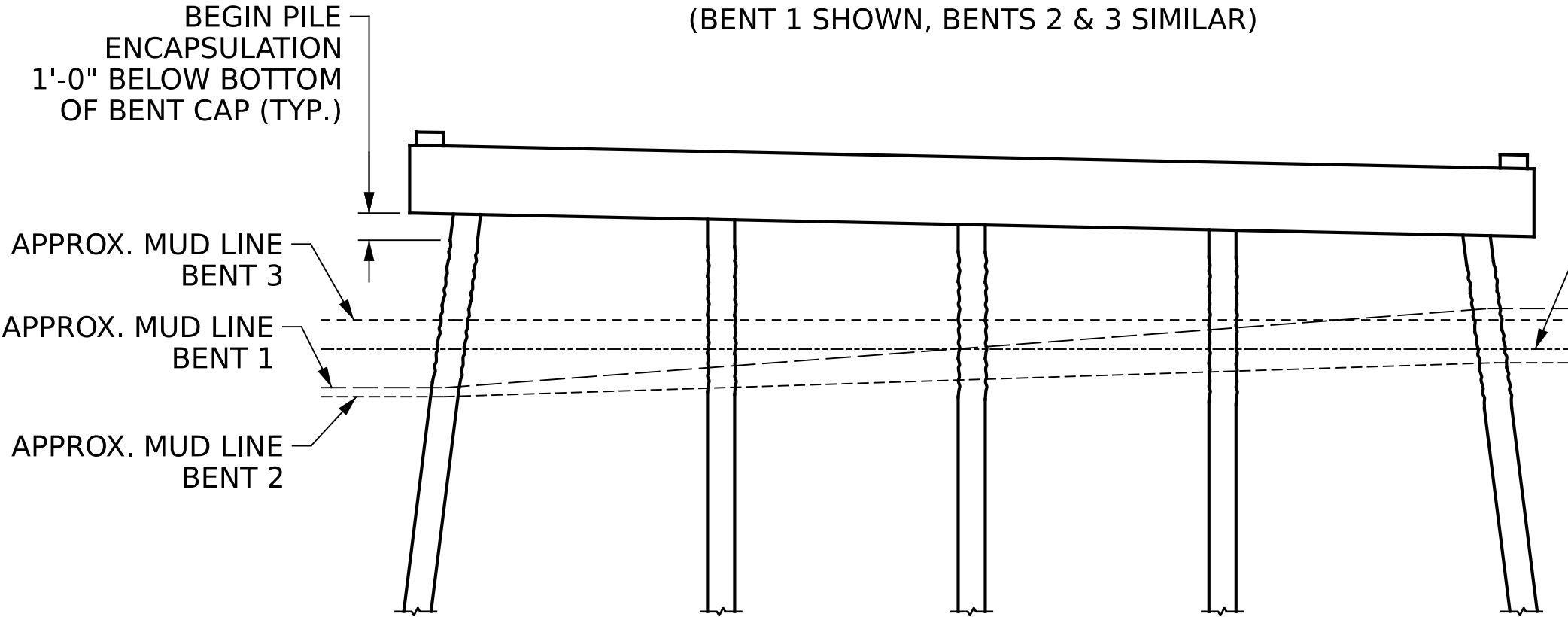
REVISIONS				SHEET NO.	
NO.	BY:	DATE:	NO.	BY:	DATE:
1			3		
2			4		

TOTAL SHEETS
79



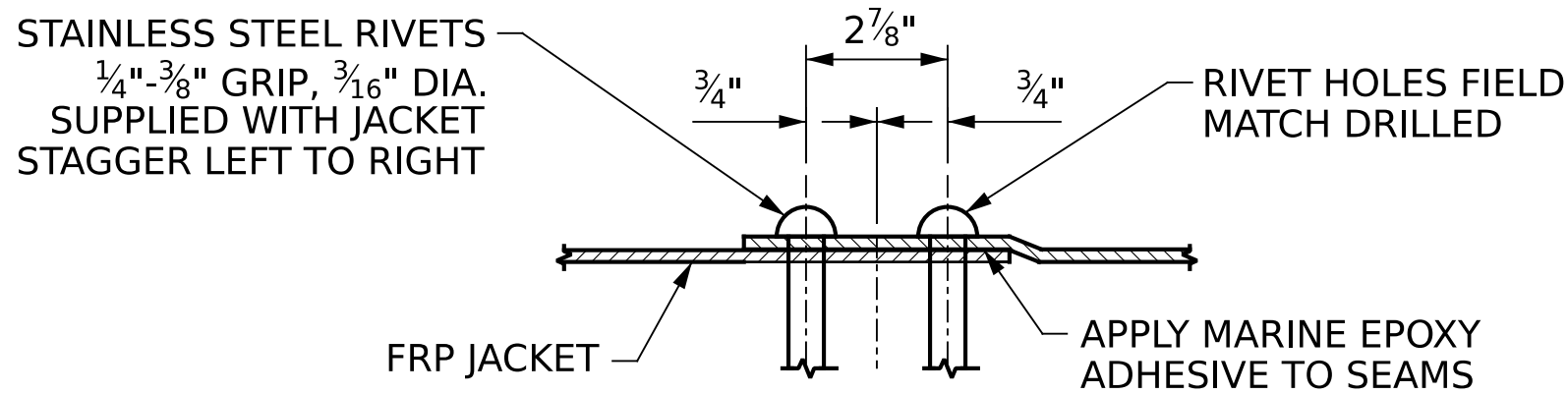
PLAN

(BENT 1 SHOWN, BENTS 2 & 3 SIMILAR)



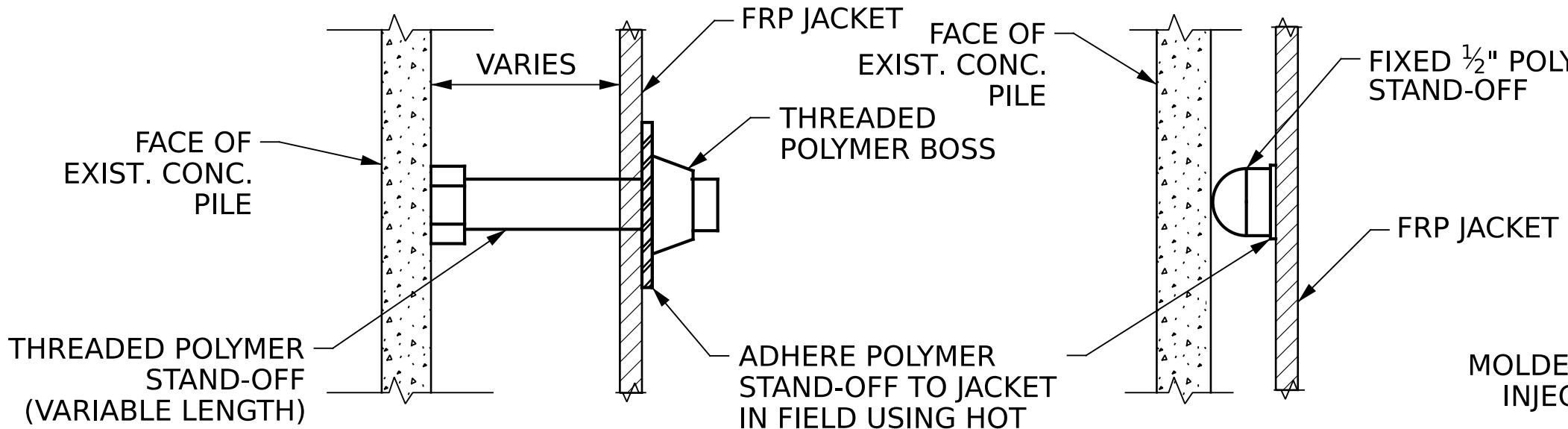
ELEVATION

(BENT 1 SHOWN, BENTS 2 & 3 SIMILAR)



DETAIL A

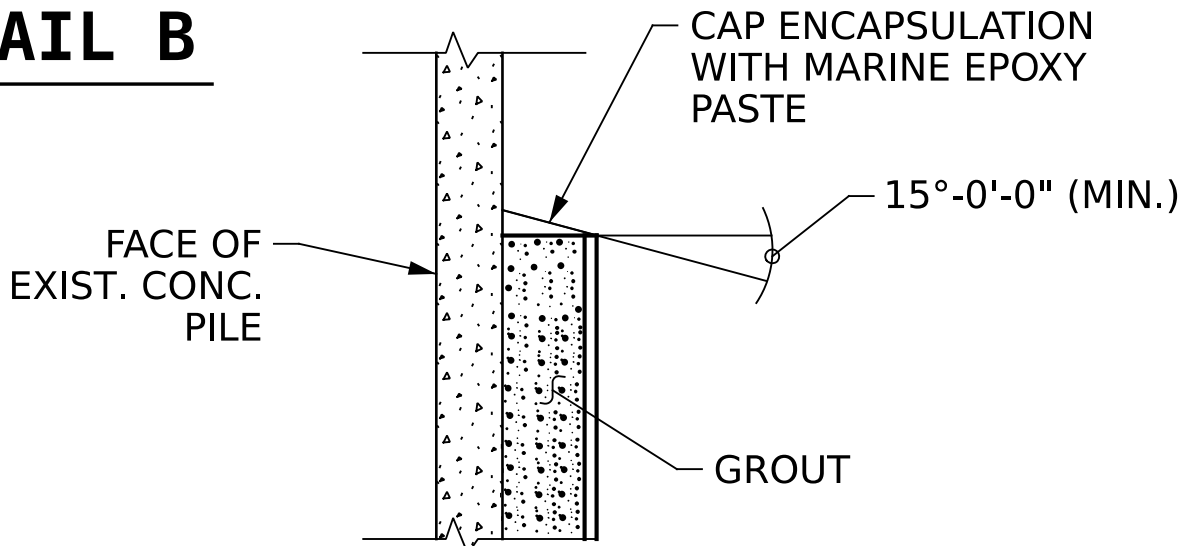
(SEAM DETAIL)



ADJUSTABLE STAND-OFF DETAIL

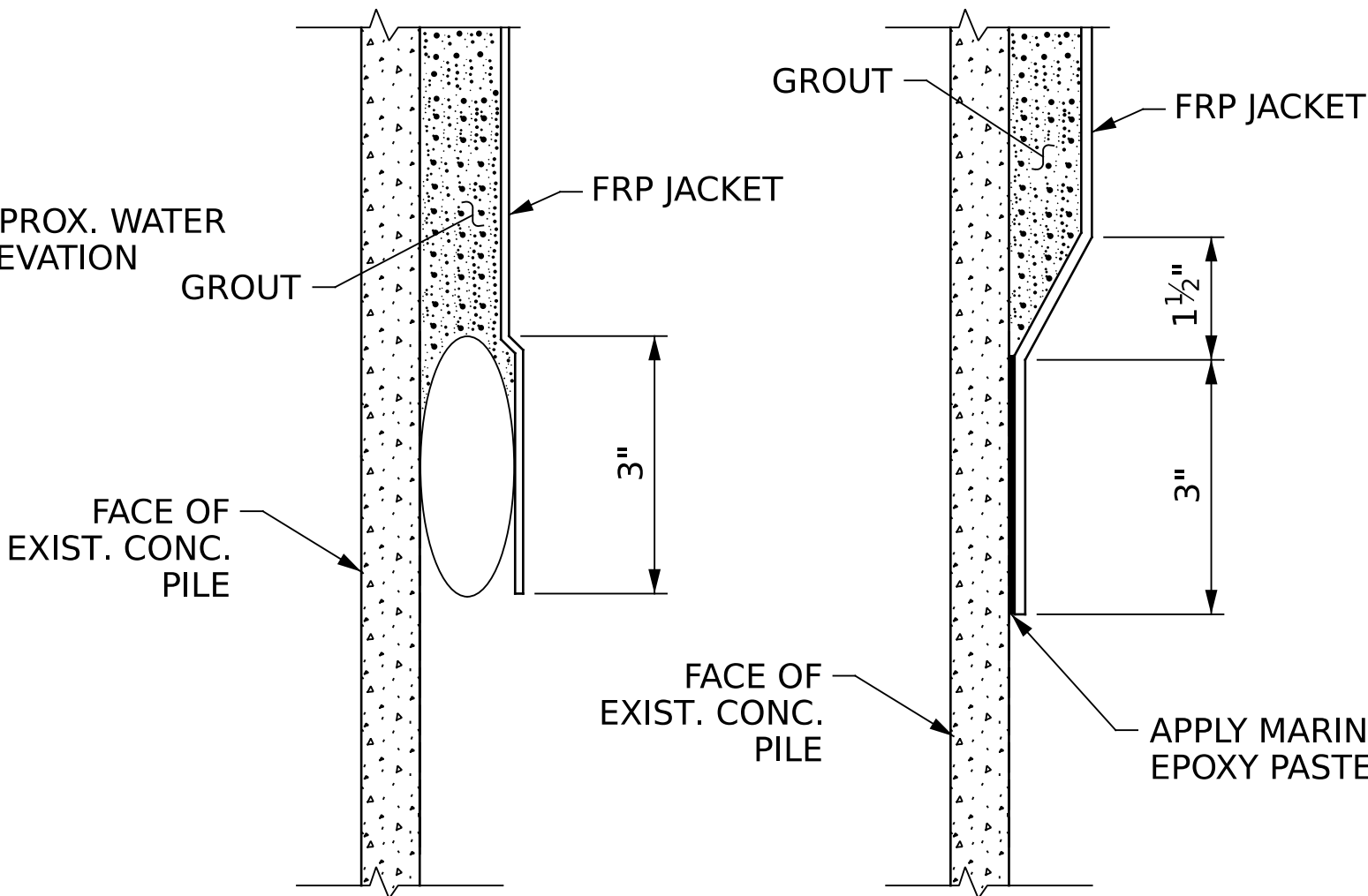
FIXED STAND-OFF DETAIL

DETAIL B



DETAIL C

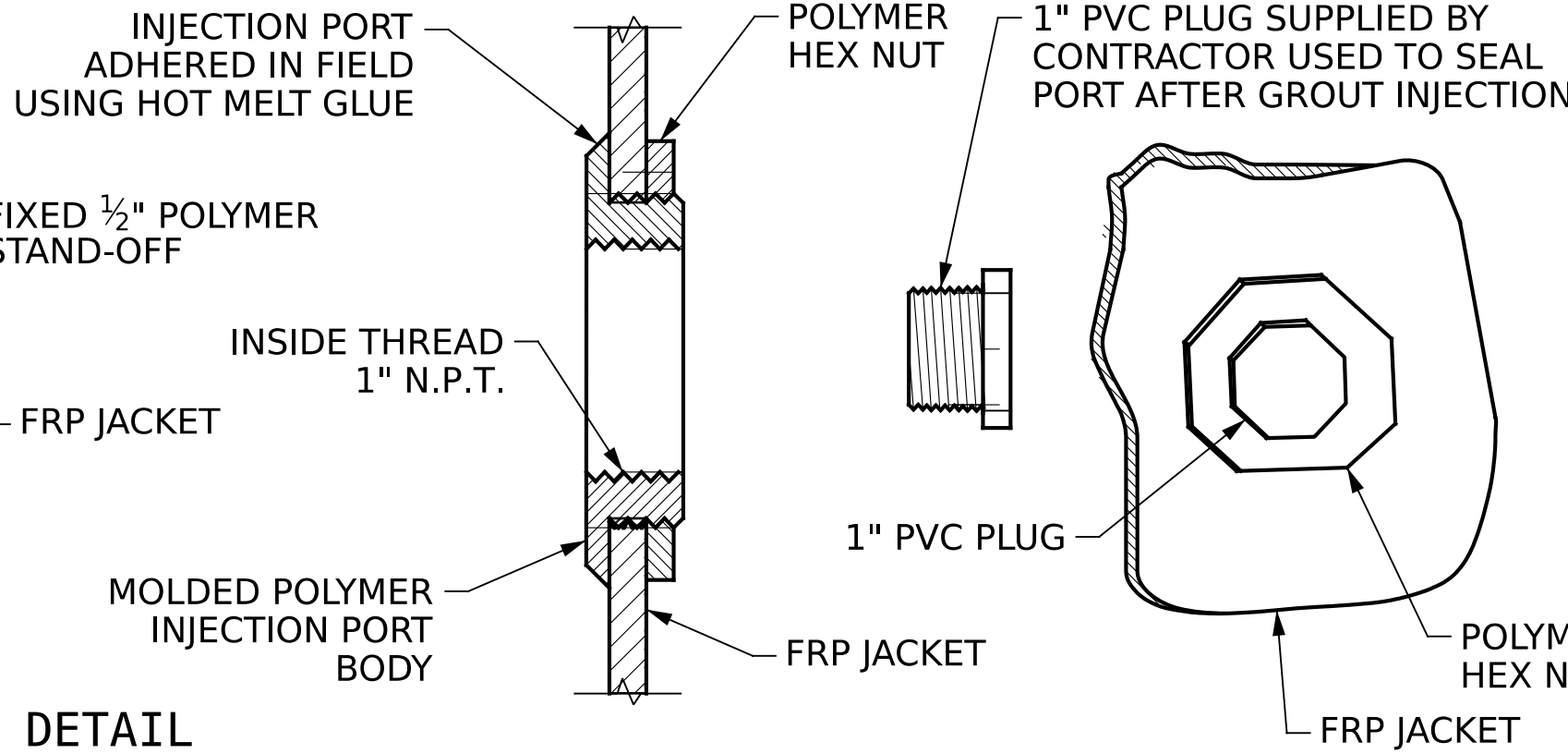
(TOP OF JACKET)



BOTTOM SEAL DETAIL

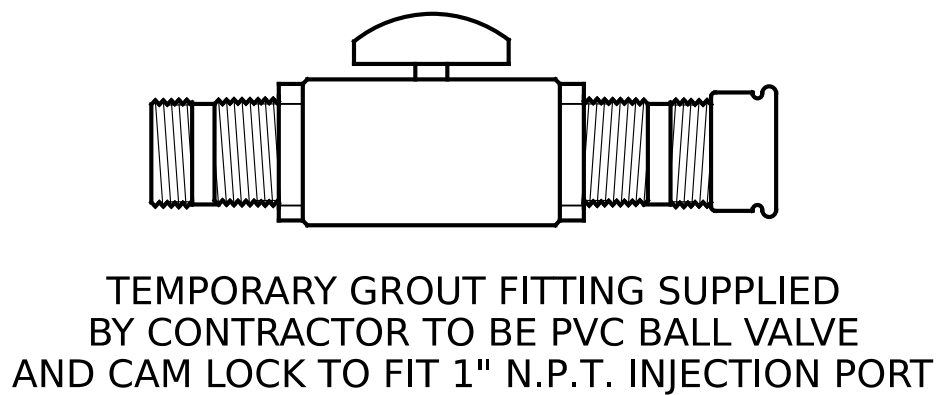
ALTERNATE BOTTOM SEAL DETAIL

DETAIL D



SECTION THRU PORT

ISOMETRIC VIEW



DETAIL E

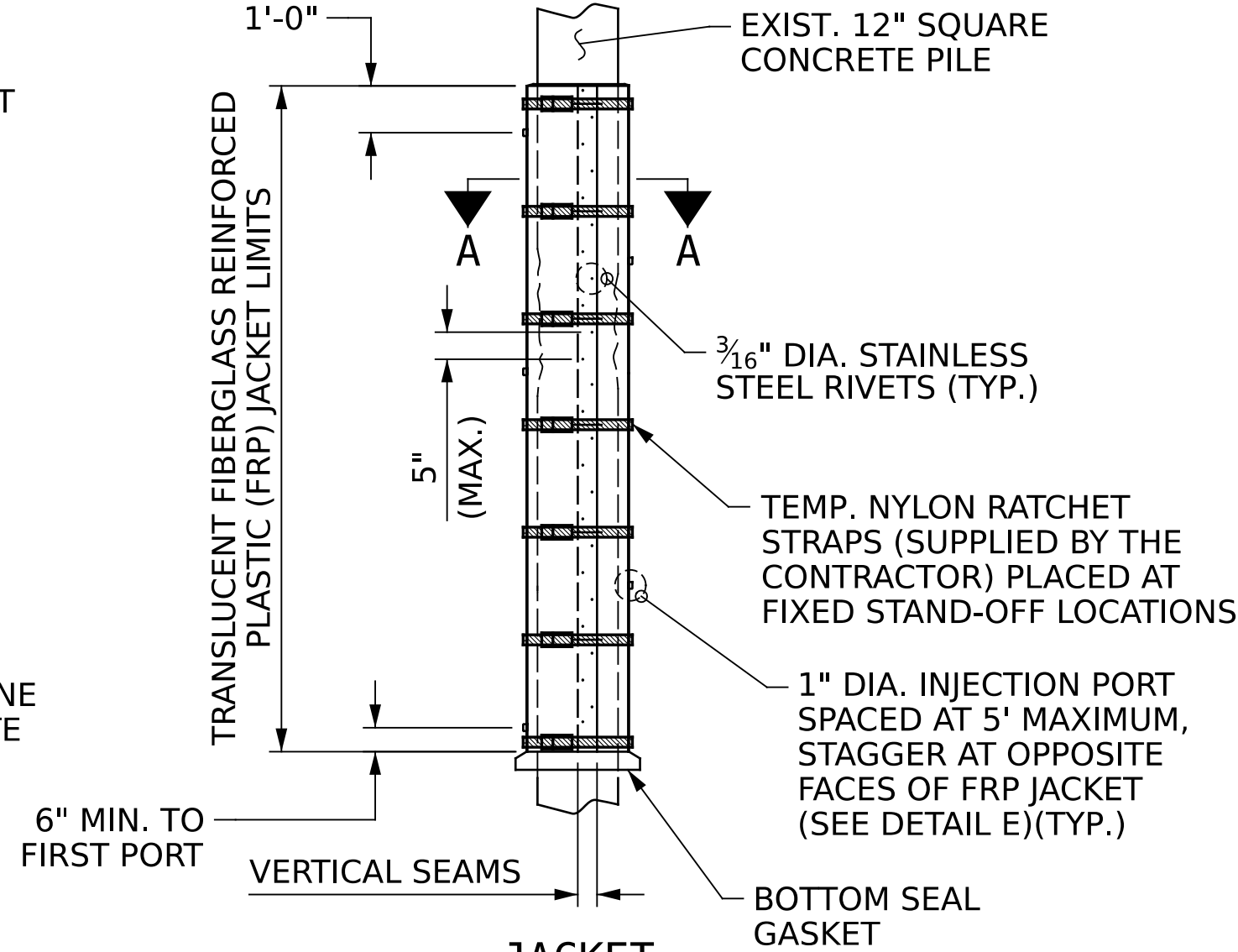
AS-BUILT SUMMARY OF QUANTITIES

CONCRETE PILE ENCAPSULATION LOCATION TABLE

LOCATION	FIBERGLASS REINFORCED PLASTIC (FRP) JACKET LENGTHS (LIN.FT.)										ESTIMATE	ACTUAL
	P1	P2	P3	P4	P5	P6	P7	P8	P9	P10	LIN. FT.	LIN. FT.
BENT 1	5.5	4.8	4.1	3.4	2.7	5.5	4.8	4.1	3.4	2.7	41.0	
BENT 2	5.9	5.6	5.3	5.0	4.7	5.9	5.6	5.3	5.0	4.7	53.0	
BENT 3	3.1	3.1	3.1	3.1	3.1	3.1	3.1	3.1	3.1	3.1	31.0	
TOTAL											125.0	

PILE ENCAPSULATION EXTENDS FROM 1'-0" BELOW BOTTOM OF BENT CAP TO 1'-0" BELOW MUD LINE.

QUANTITIES ARE BASED ON BEST AVAILABLE INFORMATION. CONTRACTOR SHALL VERIFY MUD LINE ELEVATION PRIOR TO INSTALLATION OF JACKETS.



JACKET

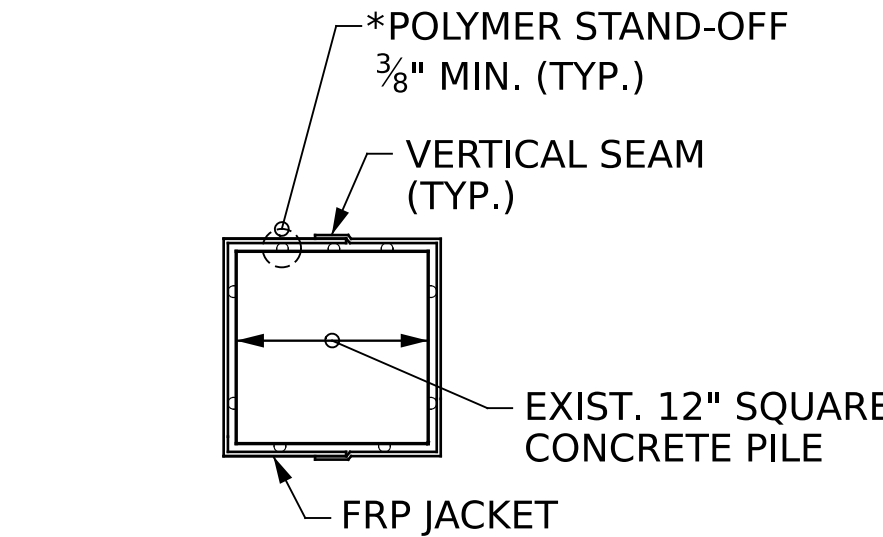
CONCRETE PILE ENCAPSULATION

NOTE:

THE FLOATING TURBIDITY CURTAIN QUANTITY SHOWN ON THE TOTAL BILL OF MATERIAL IS BASED ON A 1.5' WATER DEPTH AND THE LENGTH NECESSARY TO FULLY ENCOMPASS ONE INTERIOR BENT.

FOR FLOATING TURBIDITY CURTAIN, SEE SPECIAL PROVISIONS.

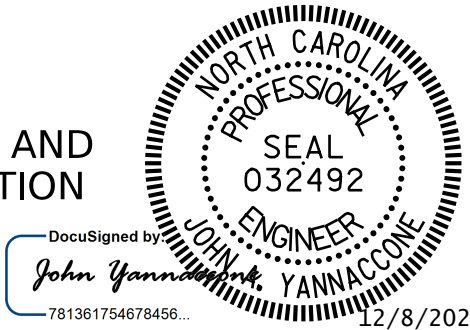
CONTRACTOR SHALL MAKE ALL REASONABLE EFFORTS TO LIMIT CONTAMINATION OF THE WATER DURING EXCAVATION FOR THE PILE ENCAPSULATION, PUMPING OF EPOXY GROUT, AND ALL OTHER WORK TO INSTALL THE PILE ENCAPSULATION.



SECTION A-A

REPAIR SEQUENCE

1. INSTALL FLOATING TURBIDITY CURTAIN TO ENCOMPASS ENTIRE INTERIOR BENT. ALLOW ENOUGH SPACE FOR PILE ENCAPSULATION WORK.
2. AFTER SURFACE PREPARATION, PLACE JACKET IN PROPER LOCATION AROUND PILE AND SEAL LONGITUDINAL SEAMS (SEE DETAIL A). INSTALL TEMPORARY BRACING.
3. CONFIRM SPACING BETWEEN JACKET AND PILE. INSTALL BOTTOM SEAL (SEE DETAIL D). ALLOW BOTTOM SEAL TO CURE APPROX. 4 HOURS.
4. ATTACH GROUT HOSE TO LOWERMOST INJECTION PORT AND PUMP EPOXY GROUT FOR 30-SEC. CHECK FOR LEAKS ALONG SEAM AND BOTTOM SEAL. (OPTIONALLY ALLOW THIS GROUT TO CURE AND PROCEED WITH GROUT INJECTION FROM 2ND PORT.)
5. PLUG UPPER INJECTION PORTS AND PUMP GROUT INTO LOWER PORT UNTIL GROUT REACHES TOP OF JACKET. ONLY USE UPPER PORTS IF INJECTION BECOME DIFFICULT.
6. REPEAT STEPS 2 THRU 5 FOR EACH PILE WITHIN ONE BENT.
7. WHEN PILE ENCAPSULATION WORK AT THE BENT IS COMPLETE, REMOVE FLOATING TURBIDITY CURTAIN AND REINSTALL THE CURTAIN FOR THE PILE ENCAPSULATION WORK AT THE NEXT INTERIOR BENT.



PROJECT NO. **HI-0018**
COLUMBUS COUNTY
BRIDGE NO. **230388**

STATE OF NORTH CAROLINA
DEPARTMENT OF TRANSPORTATION
RALEIGH

SUBSTRUCTURE REPAIR
CONCRETE PILE ENCAPSULATION

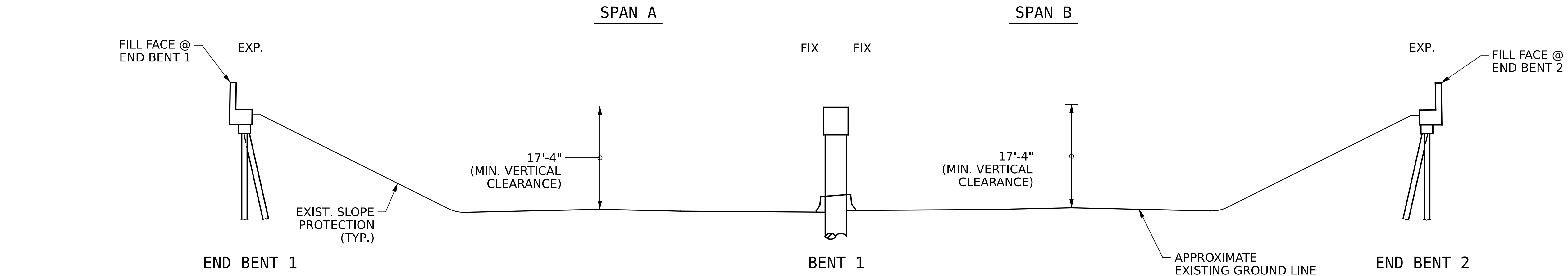
DRAWN BY : **R.L.PUTEK** DATE : **08/2024**
CHECKED BY : **J.A.YANNACCONE** DATE : **08/2024**



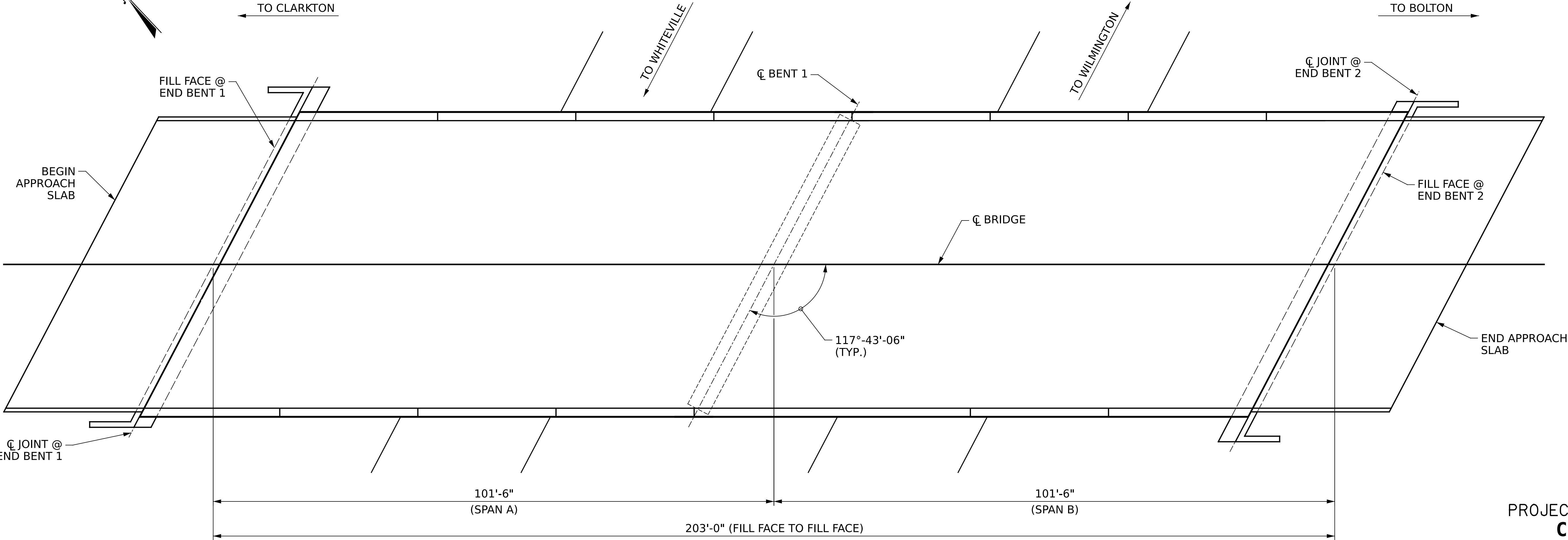
One Glenwood Avenue
Suite 900
Raleigh, NC 27603
919-420-7660
NC Lic. No. F-0270

DOCUMENT NOT CONSIDERED
FINAL UNLESS ALL
SIGNATURES COMPLETED

REVISIONS						SHEET NO.
NO.	BY:	DATE:	NO.	BY:	DATE:	
1			3			TOTAL SHEETS 79
2			4			



SECTION ALONG -CL- BRIDGE
(SECTIONS AT BENTS AND END BENTS ARE AT RIGHT ANGLES)



PLAN
(FOOTINGS AND PILES NOT SHOWN FOR CLARITY)

NOTES:

GENERAL DRAWING INFORMATION IS TAKEN FROM THE ORIGINAL PLANS AND THE ROUTINE INSPECTION REPORT DATED 07/10/2024.

BRIDGE ORIENTATION CONFORMS TO THE EXISTING BRIDGE PLANS AND ROUTINE INSPECTION REPORT.

SCOPE OF WORK:

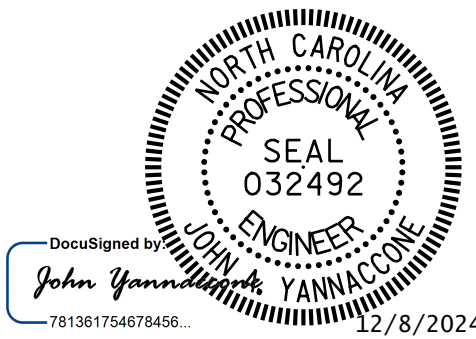
- APPLY DECK SEALANT TO PREPARED TOP OF BRIDGE DECK.

PROJECT NO. **HI-0018**
COLUMBUS COUNTY
BRIDGE NO. **230408**

SHEET 1 OF 2

STATE OF NORTH CAROLINA
DEPARTMENT OF TRANSPORTATION
RALEIGH

GENERAL DRAWING
FOR BRIDGE ON NC 211
(GREEN SWAMP ROAD)
OVER US 74 - US 76 BYP



I HEREBY CERTIFY THAT THIS STRUCTURE WAS REHABILITATED
ACCORDING TO THESE PLANS OR AS NOTED HEREIN.

RESIDENT ENGINEER

DATE



One Glenwood Avenue
Suite 900
Raleigh, NC 27603
919-420-7660
NC Lic. No. F-0270

DOCUMENT NOT CONSIDERED
FINAL UNLESS ALL
SIGNATURES COMPLETED

REVISIONS						SHEET NO.
NO.	BY:	DATE:	NO.	BY:	DATE:	S11-01
1			3			TOTAL SHEETS
2			4			79

DRAWN BY : **R.L.PUTEK** DATE : **08/2024**
CHECKED BY : **J.A.YANNACCON** DATE : **08/2024**