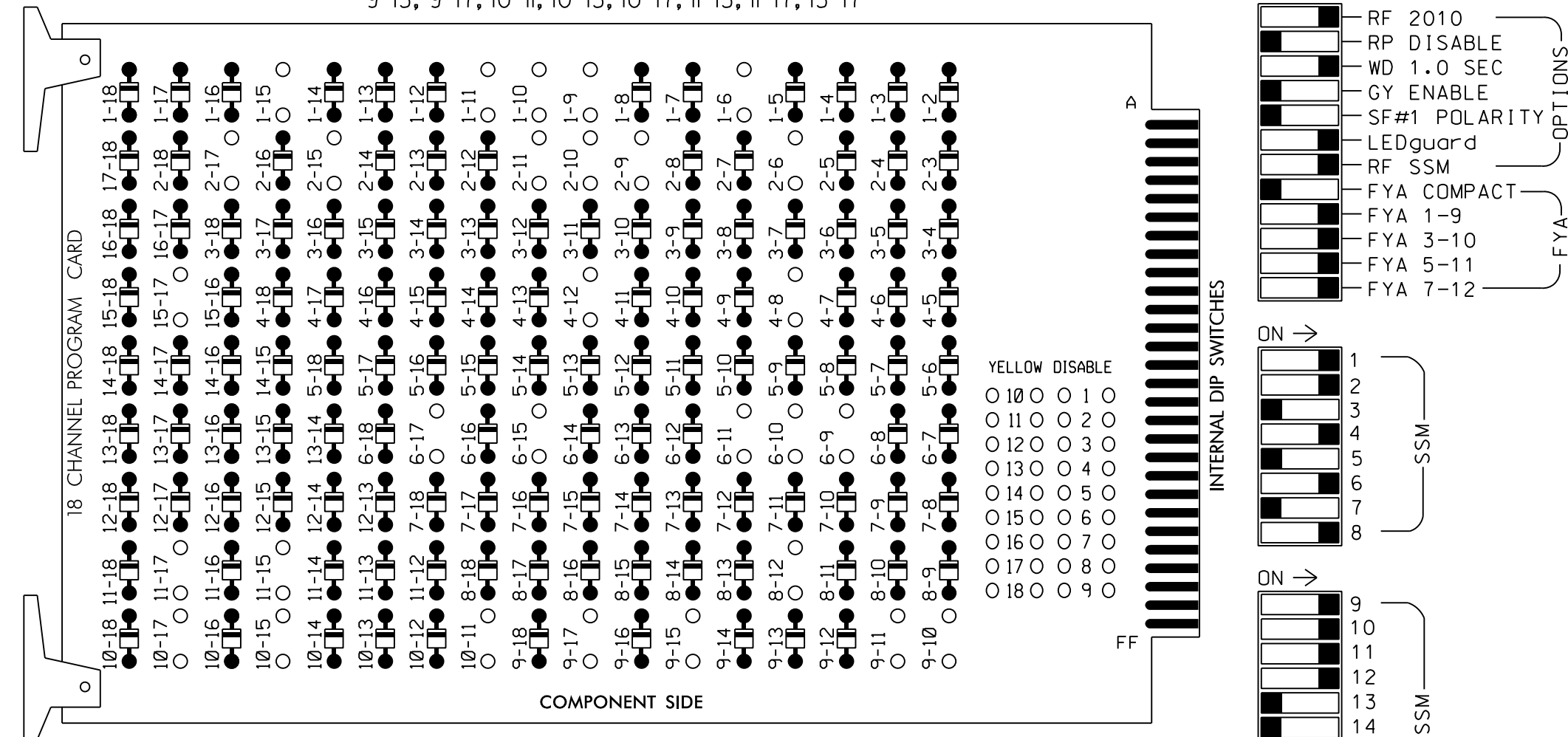


18 CHANNEL IP CONFLICT MONITOR PROGRAMMING DETAIL

(remove jumpers and set switches as shown)

REMOVE DIODE JUMPERS 1-6, 1-9, 1-10, 1-11, 1-15, 2-6, 2-9, 2-10, 2-11, 2-15, 2-17, 4-8, 4-12, 6-9, 6-10, 6-11, 6-15, 6-17, 8-12, 9-10, 9-11, 9-15, 9-17, 10-11, 10-15, 10-17, 11-15, 11-17, 15-17



REMOVE JUMPERS AS SHOWN

NOTES:

- 1. Card is provided with all diode jumpers in place. Removal of any jumper allows its channels to run concurrently.
2. Ensure jumpers SEL2-SEL5 and SEL9 are present on the monitor board.
3. Ensure that Red Enable is active at all times during normal operation.
4. Integrate monitor with Ethernet network in cabinet.

NOTES

- 1. To prevent "flash-conflict" problems, insert red flash program blocks for all unused vehicle load switches in the output file.
2. Initialize database in Naztec 2070 local software (Apogee) as FULL-CALTRANS.
3. Initialize I/O "C1-C11-ABC IO Mode" to USER (MM 1-8-6).
4. Program phases 2 and 6 for Start Up In Green.
5. Program "Start Up Flash" for 0 sec.
6. Ensure "Local Flash Start" feature is set to "RST".
7. Ensure "InhFYARedSt" feature is set to "ON".
8. Ensure "Flash Mode" is set to "CHANNEL".
9. Program all channels in use to flash red.
10. Program Start Red Time for 6.0 Seconds.
11. Program controller to provide a 1 second delay on the Flash Sense/Local Flash input.

FROM MAIN MENU->1->8->7 (I/O LOGIC) Result Src.Fcn TimeOp Time 1208 = 01208 DLY 1

- 12. Program phases 4 and 8 for Dual Entry.
13. The cabinet and controller are part of the Greensboro Signal System.

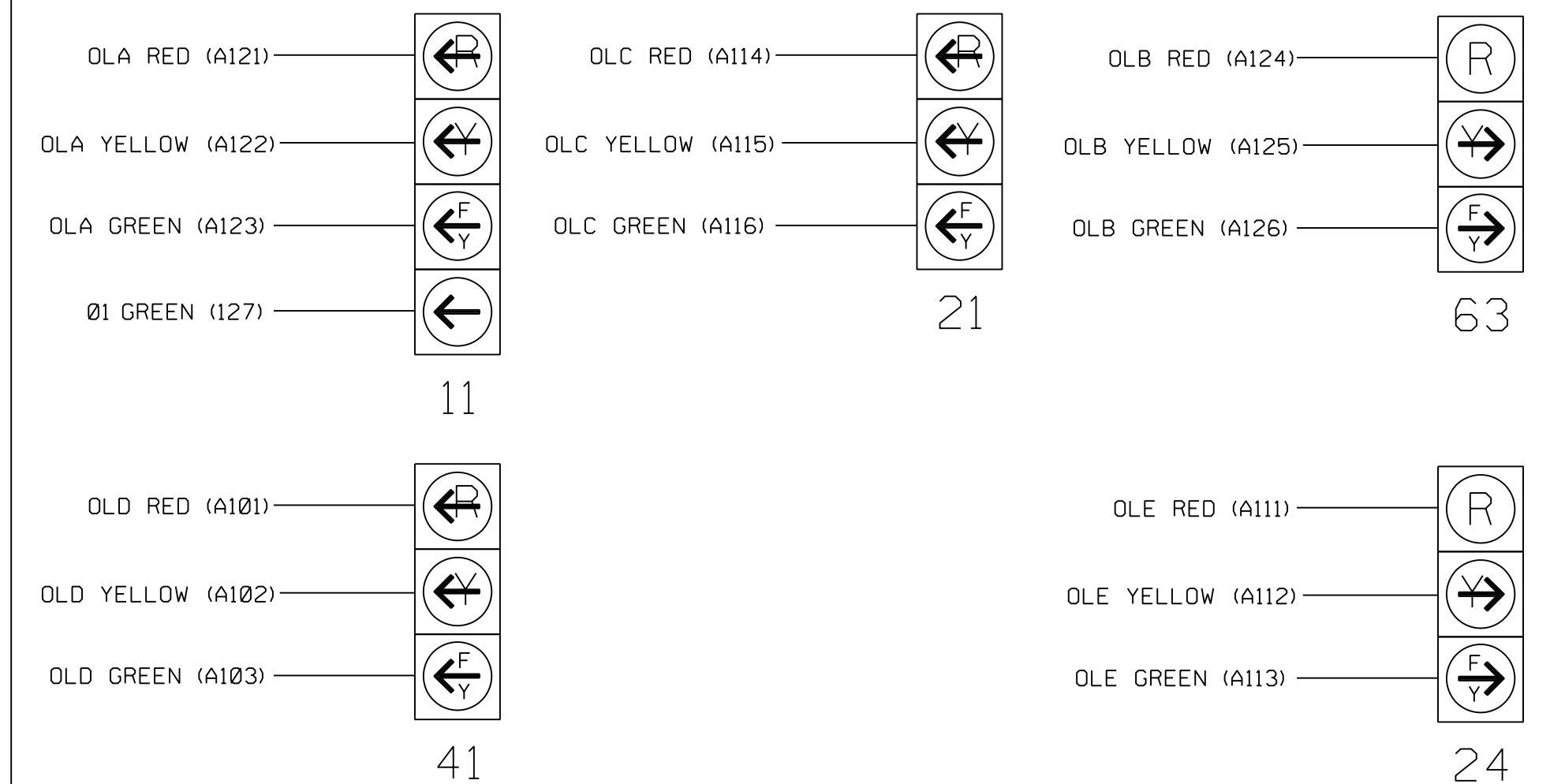
SIGNAL HEAD HOOK-UP CHART

Table with columns for Load Switch No., CMU Channel No., Phase, Signal Head No., and various signal colors (RED, YELLOW, GREEN, RED ARROW, YELLOW ARROW, FLASHING YELLOW ARROW, GREEN ARROW) mapped to terminals S1-S12 and AUX1-AUX6.

NU = Not Used
* Denotes install load resistor. See load resistor installation detail this sheet.
★ See pictorial of head wiring in detail below.

FYA SIGNAL WIRING DETAIL

(wire signal head as shown)



INPUT FILE POSITION LAYOUT

(front view)

Table showing 14 input file positions with columns for File U/L, File U/L, and specific file names like I1, I2, etc.

EX.: 1A, 2A, ETC. = LOOP NO.'S FS = FLASH SENSE ST = STOP TIME

EQUIPMENT INFORMATION

CONTROLLER.....2070
CABINET.....332 W/ AUX
SOFTWARE.....TRAFFICWARE APOGEE
CABINET MOUNT.....BASE
OUTPUT FILE POSITIONS...18 WITH AUX. OUTPUT FILE
LOAD SWITCHES USED.....S1,S2,S5,S8,S9,S11,AUX S1,AUX S2 AUX S3,AUX S4,AUX S5
PHASES USED.....1,2,4,6,8,6PED
OVERLAP "A".....*
OVERLAP "B".....*
OVERLAP "C".....*
OVERLAP "D".....*
OVERLAP "E".....*

* See overlap programming detail on sheet 2.

INPUT FILE CONNECTION & PROGRAMMING CHART

Table with columns: LOOP NO., LOOP TERMINAL, INPUT FILE POS., PIN NO., DETECTOR NO., CALL PHASE, SWITCH, DELAY TIME, EXTEND TIME, CALL, EXTEND, ADDED INIT.

NOTE: INSTALL DC ISOLATORS IN INPUT FILE SLOT I13.

COUNTDOWN PEDESTRIAN SIGNAL OPERATION

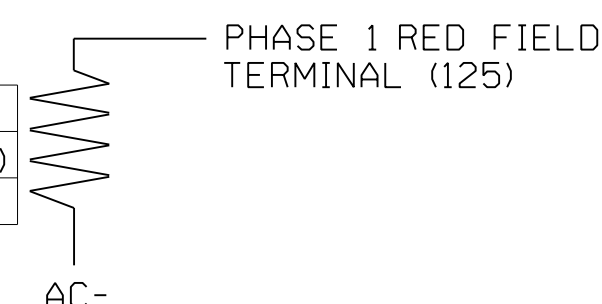
Countdown Ped Signals are required to display timing only during Ped Clearance Interval. Consult Ped Signal Module user's manual for instructions on selecting this feature.

SPECIAL DETECTOR NOTE

Install a video detection system for vehicle detection for zones 1A, 1B, 2A, 2B, 2C, 4A, 4B, 6A, 6B, and 8A. Perform installation according to manufacturer's directions and NCDOT engineer-approved mounting locations to accomplish the detection schemes shown on the Signal Design Plans.

LOAD RESISTOR INSTALLATION DETAIL

Table with columns: ACCEPTABLE VALUES, VALUE (ohms), WATTAGE. Values include 1.5K - 1.9K (25W min) and 2.0K - 3.0K (10W min).



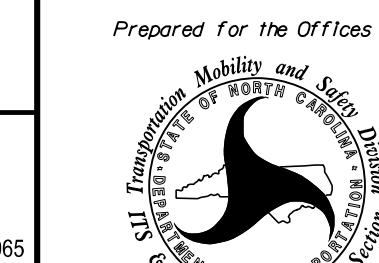
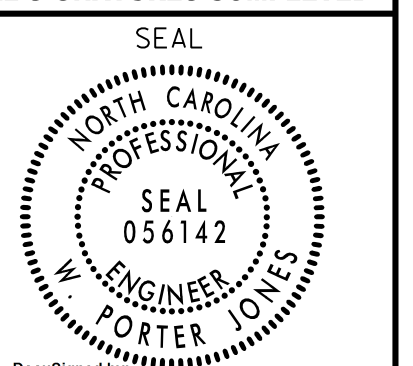
THIS ELECTRICAL DETAIL IS FOR THE SIGNAL DESIGN: 07-1689T4 DESIGNED: August 2024 SEALED: August 22, 2024 REVISED:

Signal Upgrade - Temporary Design 4 (TMP Phase III) Electrical Detail - Sheet 1 of 3

DOCUMENT NOT CONSIDERED FINAL UNLESS ALL SIGNATURES COMPLETED

ELECTRICAL AND PROGRAMMING DETAILS FOR:

SR 1556 (Gallimore Dairy Rd.) at SR 1554 (Chimney Rock Rd.)/ Simply Southern



Division 7 Guilford County Greensboro

PLAN DATE: August 2024 REVIEWED BY: DT Sears

PREPARED BY: WP Erickson-Jones REVIEWED BY:

Table with columns: REVISIONS, INIT., DATE

DocuSigned by: Porter Jones 8/22/2024

SIG. INVENTORY NO. 07-1689T4

750 N. Greenfield Pkwy, Garner, NC 27529

RK&K logo and address: 8801 Six Forks Road Suite 700 | Raleigh, North Carolina 27615-2965

8/22/2024 R:\Traffic\csh\Signal\sgms\Signal\swu015a\Sig_07-1689t4.dgn wpl Jones