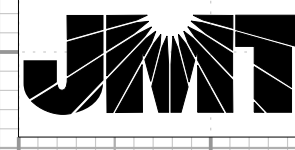


5/14/99

PROJECT REFERENCE NO. B-5372	SHEET NO. 5
ROADWAY DESIGN ENGINEER RECE M. SCHUBERT 10/28/2024	HYDRAULICS ENGINEER RECE M. SCHUBERT 10/28/2024

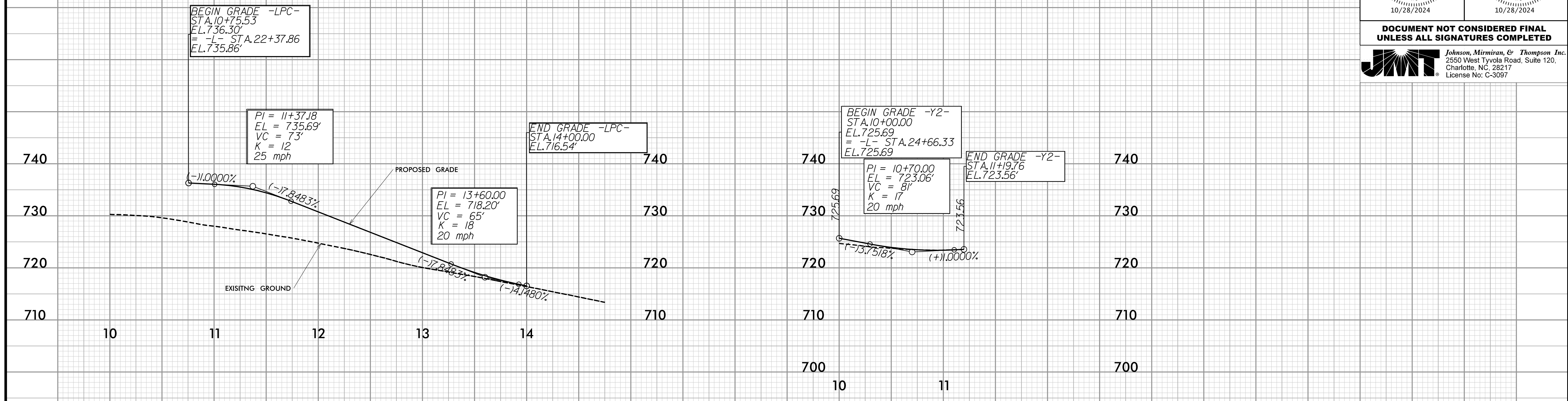
DOCUMENT NOT CONSIDERED FINAL
UNLESS ALL SIGNATURES COMPLETED



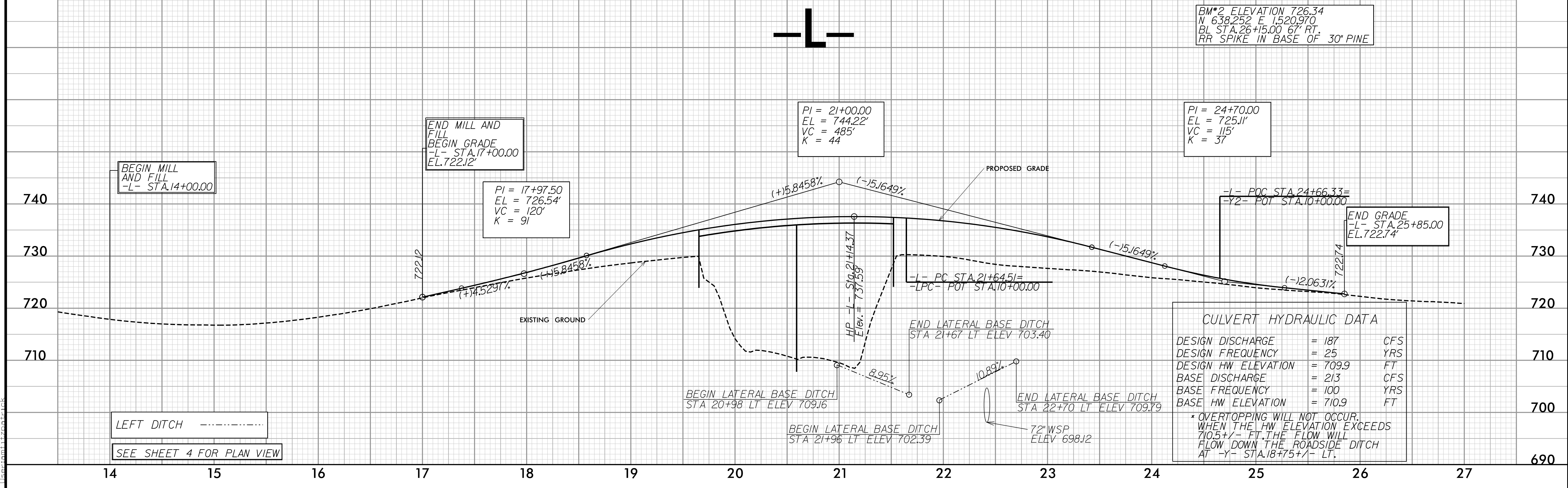
Johnson, Mirmiran, & Thompson Inc.
2550 West Tivola Road, Suite 120,
Charlotte, NC, 28217
License No: C-3097

-LPC-

-Y2-



-L-



BM#2 ELEVATION 726.34
N 638.252 E 1520.970
BL STA.26+15.00 67' RT.
RR SPIKE IN BASE OF 30' PINE

CULVERT HYDRAULIC DATA	
DESIGN DISCHARGE	= 187 CFS
DESIGN FREQUENCY	= 25 YRS
DESIGN HW ELEVATION	= 709.9 FT
BASE DISCHARGE	= 213 CFS
BASE FREQUENCY	= 100 YRS
BASE HW ELEVATION	= 710.9 FT

* OVERTOPPING WILL NOT OCCUR WHEN THE HW ELEVATION EXCEEDS 710.5+/- FT. THE FLOW WILL FLOW DOWN THE ROADSIDE DITCH AT -Y- STA.18+75+/- LT.

LEFT DITCH -----
SEE SHEET 4 FOR PLAN VIEW

10/28/2024 10:06:53 AM
C:\Users\B5372\OneDrive\Documents\102824\102824.dgn