

09, 08, 2019

TIP PROJECT: U-5757

T.I.P. NO.	SHEET NO.
U-5757	UO-1

NOTE:
 ALL UTILITY WORK SHOWN ON THIS SHEET WILL BE DONE BY OTHERS. NO PAYMENT WILL BE MADE TO THE CONTRACTOR FOR UTILITY WORK SHOWN ON THIS SHEET.

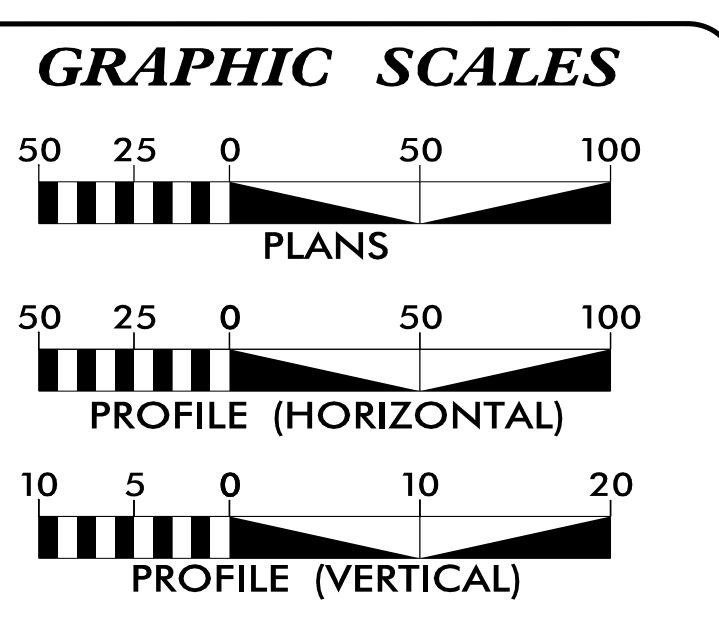
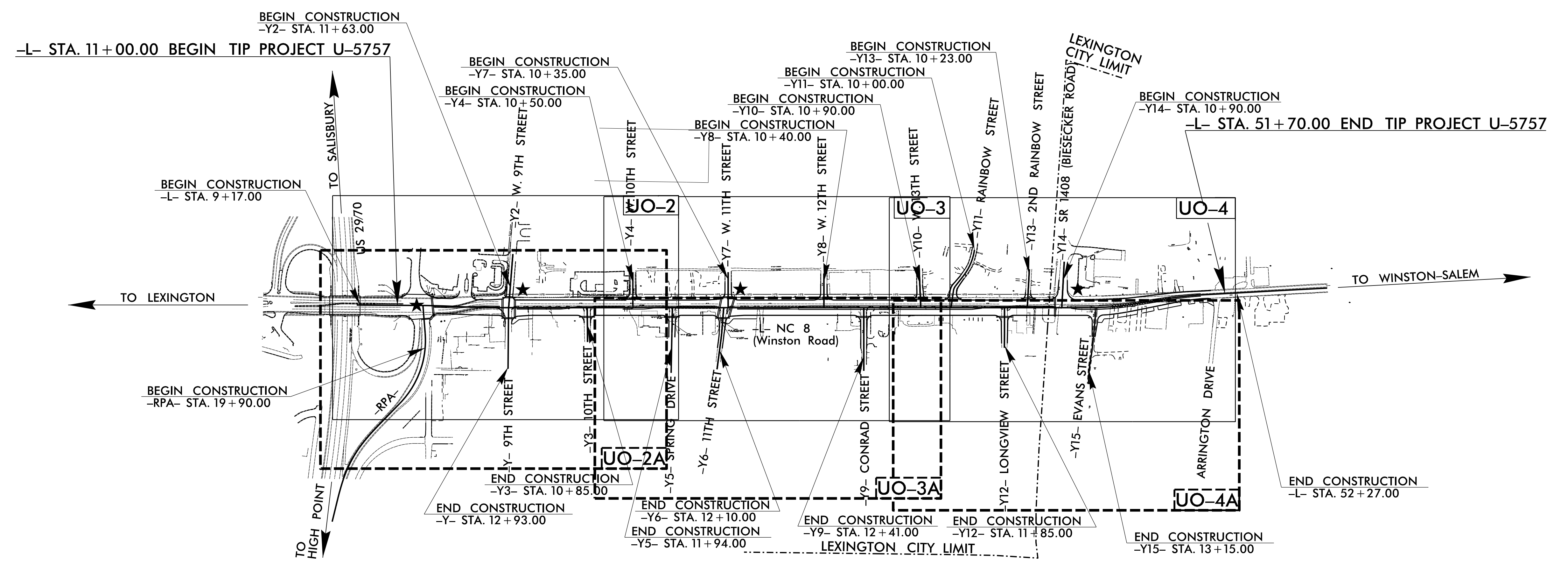
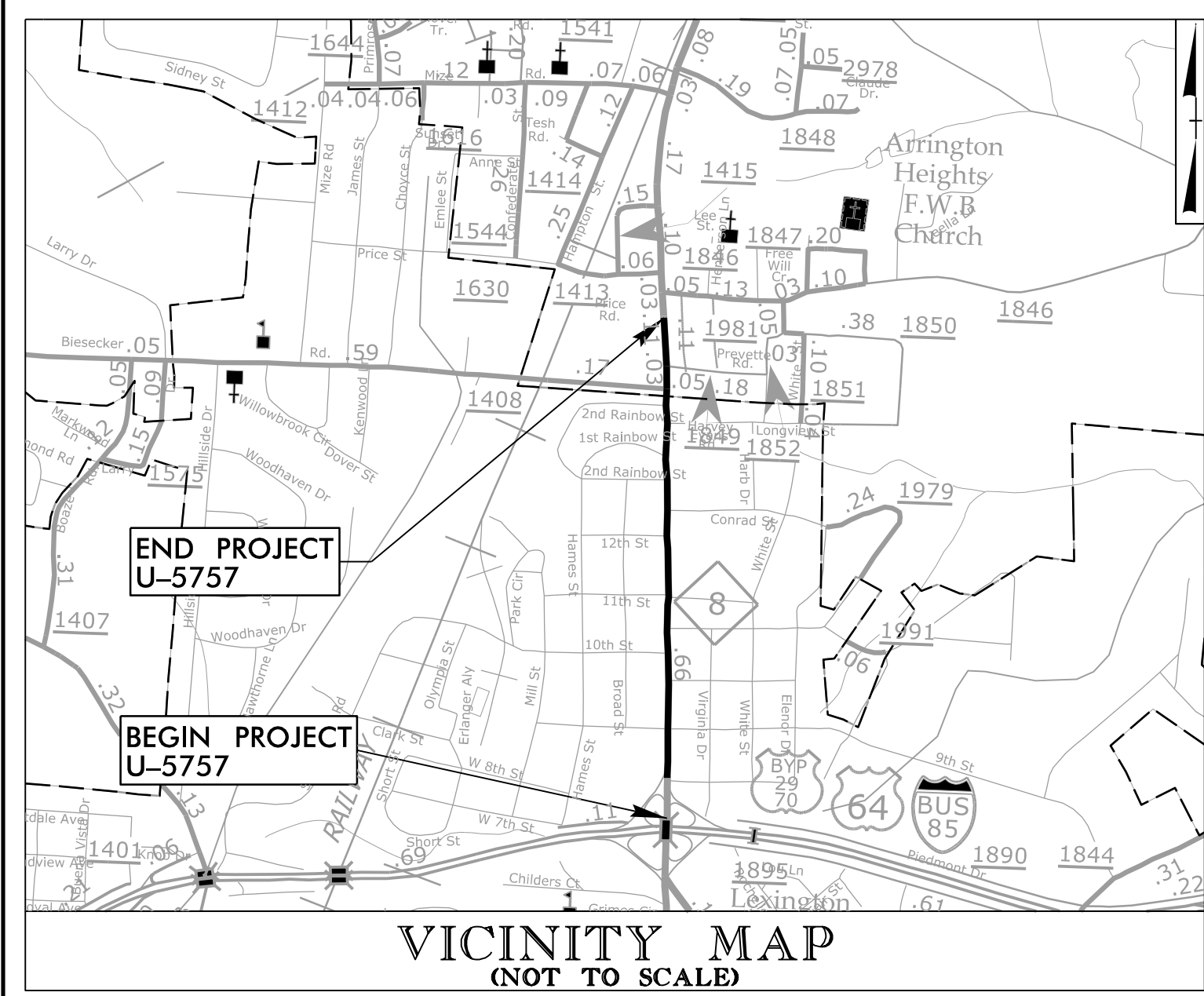


STATE OF NORTH CAROLINA
 DIVISION OF HIGHWAYS

**UTILITIES BY OTHERS PLANS
 DAVIDSON COUNTY**

**LOCATION: NC 8 (WINSTON ROAD) FROM US 29/US 70 TO
 SR 1846 (ARRINGTON DRIVE) IN LEXINGTON**

**TYPE OF WORK: ELECTRIC DISTRIBUTION, ELECTRIC TRANSMISSION, GAS AND
 COMMUNICATIONS**



INDEX OF SHEETS

SHEET NO.:	DESCRIPTION:
UO-1	TITLE SHEET
UO-2 THRU UO-4A	UBO PLAN SHEETS

- UTILITY OWNERS WITH CONFLICTS**
- (A) CITY OF LEXINGTON ELECTRIC (DISTRIBUTION)
 - (B) CITY OF LEXINGTON ELECTRIC (TRANSMISSION)
 - (C) DUKE ENERGY CAROLINAS (DISTRIBUTION)
 - (D) CITY OF LEXINGTON GAS (DISTRIBUTION)
 - (E) VERIZON (COMMUNICATIONS)
 - (F) WINDSTREAM (COMMUNICATIONS)
 - (G) CHARTER (COMMUNICATIONS)

PREPARED IN THE OFFICE OF:

TRANSYSTEMS

1 Glenwood Avenue
 Raleigh, NC 27603
 Tel: 919.789.9977
 Fax: 919.789.9591
 License: F-0453

William Pope, PE PROJECT UTILITY COORDINATOR

**DIVISION OF HIGHWAYS
 UTILITIES UNIT**

1555 MAIL SERVICES CENTER
 RALEIGH, NC 27699-1555
 PHONE (919) 707-6690
 FAX (919) 250-4151

David Trantham UTILITIES ENGINEER
 Joshua McMahon SR. UTILITIES COORDINATOR
 Lou Porter UTILITIES COORDINATOR

5/1/2024
 U:\proj\U-5757_U1 + sh_UO1.psh.dgn
 USER:wdope

5/14/99
5/1/2024 10:57:57 UT - 4_LUD2_psh.dgn

TRANSYSTEMS

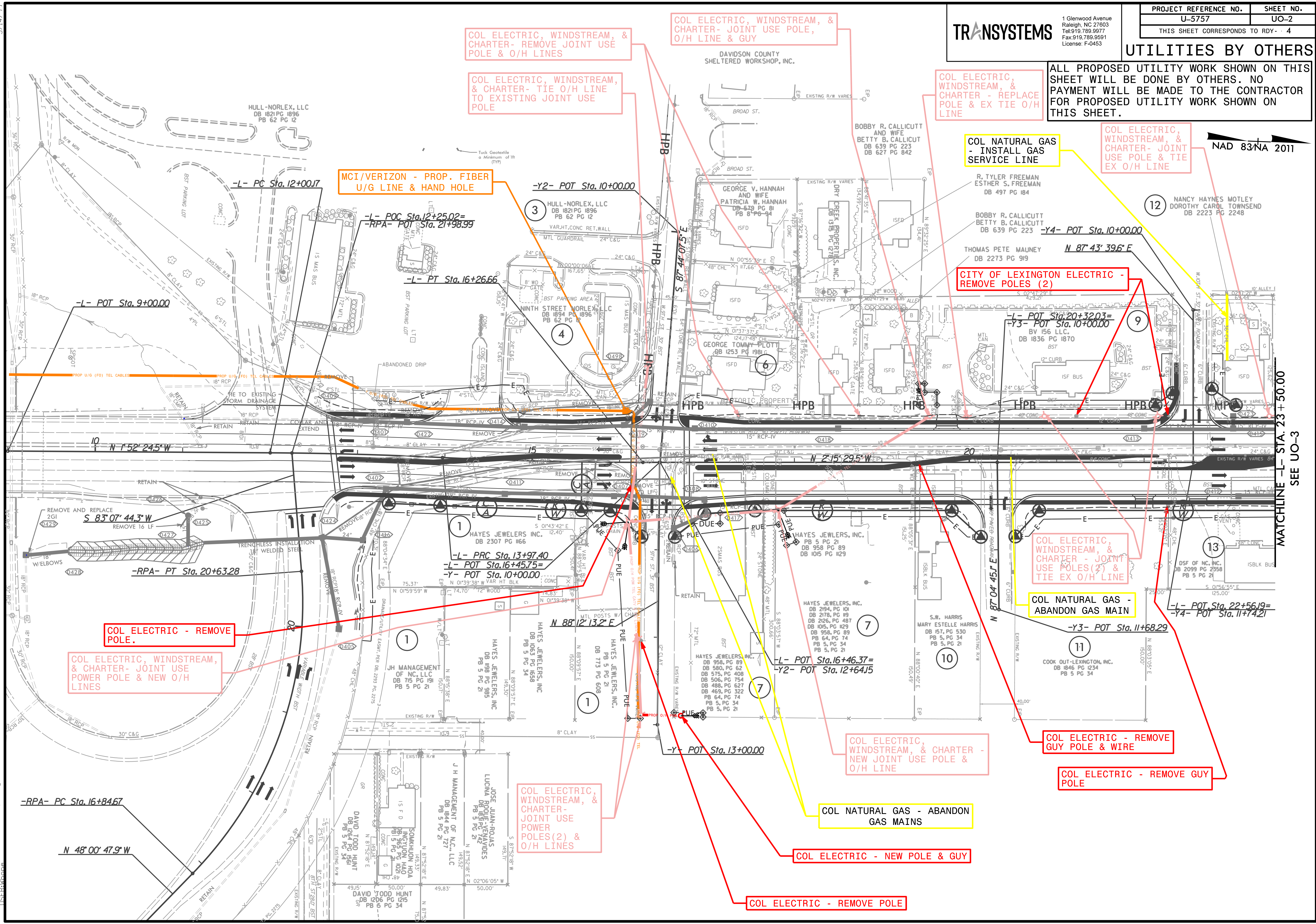
1 Glenwood Avenue
Raleigh, NC 27603
Tel: 919.789.9977
Fax: 919.789.9591
License: F-0453

PROJECT REFERENCE NO.	SHEET NO.
U-5757	UO-2
THIS SHEET CORRESPONDS TO RDY - 4	

UTILITIES BY OTHERS

ALL PROPOSED UTILITY WORK SHOWN ON THIS SHEET WILL BE DONE BY OTHERS. NO PAYMENT WILL BE MADE TO THE CONTRACTOR FOR PROPOSED UTILITY WORK SHOWN ON THIS SHEET.

NAD 83/NA 2011

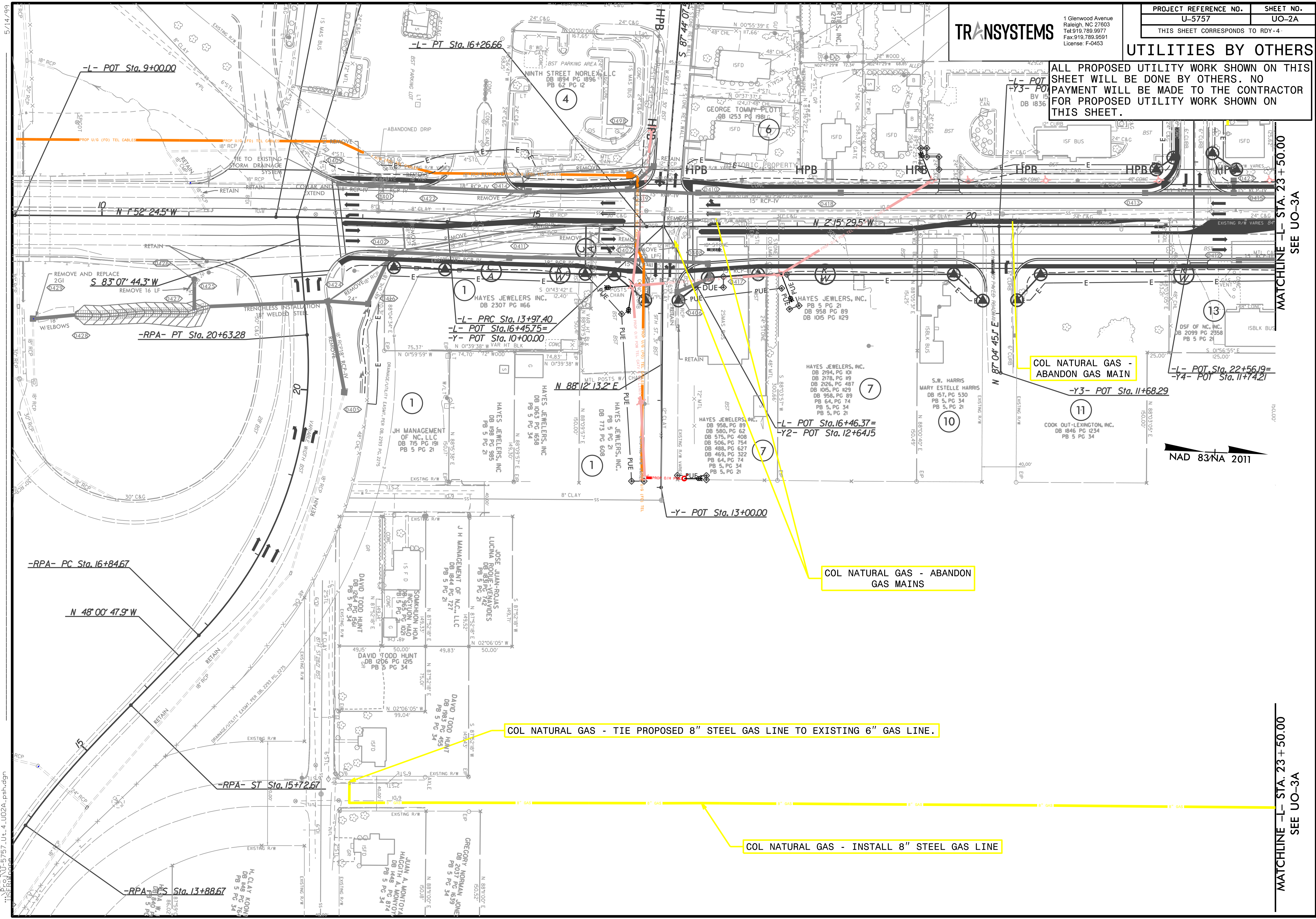


MATCHLINE -L- STA. 23+50.00
SEE UO-3

TRANSYSTEMS
 1 Glenwood Avenue
 Raleigh, NC 27603
 Tel: 919.789.9977
 Fax: 919.789.9591
 License: F-0453

UTILITIES BY OTHERS

ALL PROPOSED UTILITY WORK SHOWN ON THIS SHEET WILL BE DONE BY OTHERS. NO PAYMENT WILL BE MADE TO THE CONTRACTOR FOR PROPOSED UTILITY WORK SHOWN ON THIS SHEET.



5/14/2024
 5/14/99
 U-5757_Ut_4_U02A_psh.dgn

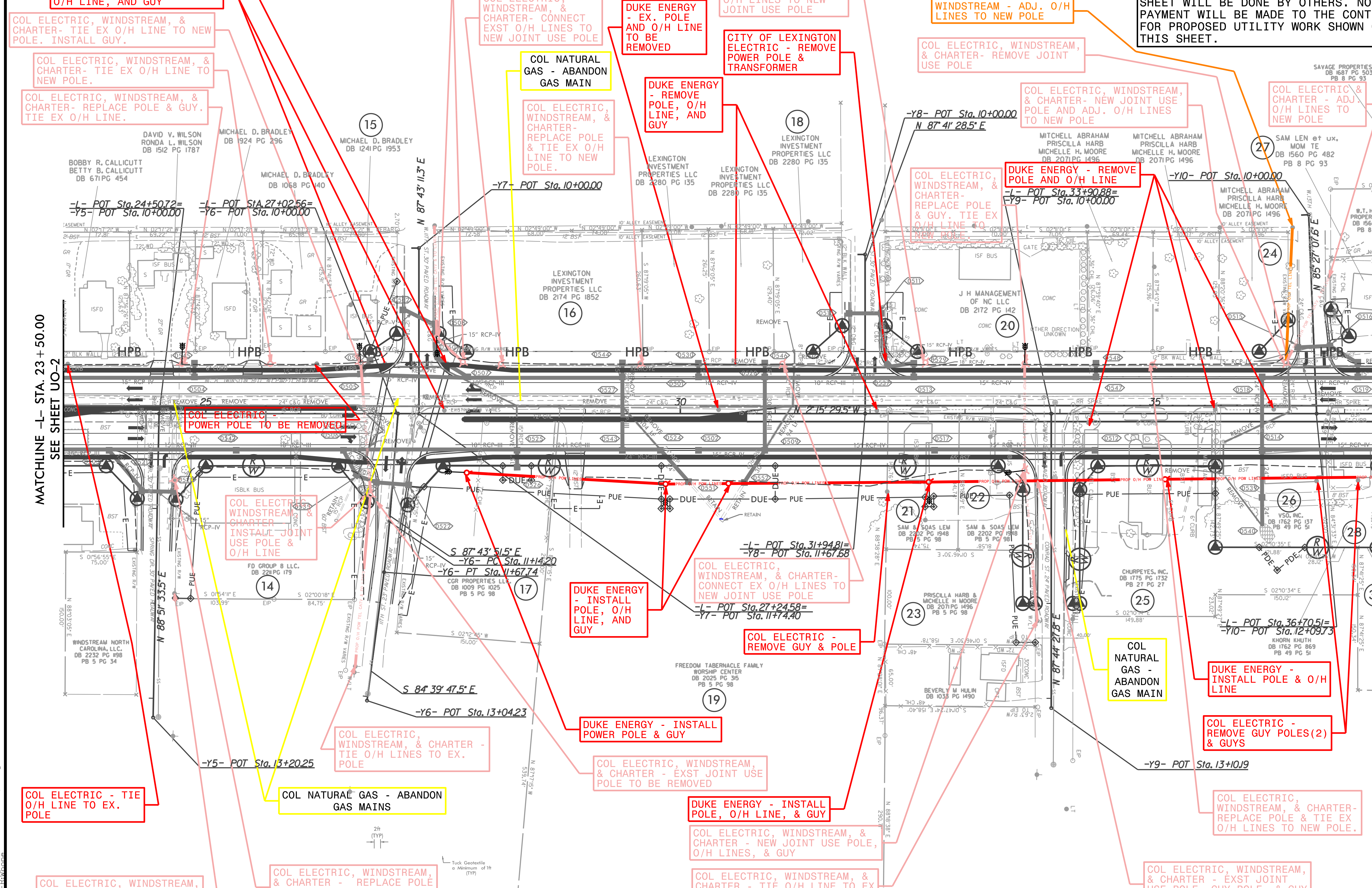
MATCHLINE -L- STA. 23 + 50.00
 SEE UO-3A

MATCHLINE -L- STA. 23 + 50.00
 SEE UO-3A

UTILITIES BY OTHERS

ALL PROPOSED UTILITY WORK SHOWN ON THIS SHEET WILL BE DONE BY OTHERS. NO PAYMENT WILL BE MADE TO THE CONTRACTOR FOR PROPOSED UTILITY WORK SHOWN ON THIS SHEET.

NAD 83/NA 2011



5/14/2024 10:57:57 AM - 5_UO3_psh.dgn

MATCHLINE -L- STA. 23 + 50.00
SEE SHEET UO-2

MATCHLINE -L- STA. 37 + 50.00
SEE SHEET UO-4

CITY OF LEXINGTON ELECTRIC - REMOVE POWER POLE

COL ELECTRIC, WINDSTREAM, & CHARTER - NEW JOINT USE POLES(2), GUY WIRE, & O/H LINES.

DUKE ENERGY - REMOVE POLE, O/H LINE, AND GUY

COL ELECTRIC, WINDSTREAM, & CHARTER- TIE EX O/H LINE TO NEW POLE. INSTALL GUY.

COL ELECTRIC, WINDSTREAM, & CHARTER- TIE EX O/H LINE TO NEW POLE.

COL ELECTRIC, WINDSTREAM, & CHARTER- REPLACE POLE & GUY. TIE EX O/H LINE.

COL ELECTRIC, WINDSTREAM, & CHARTER- CONNECT EXST O/H LINES TO NEW JOINT USE POLE

COL NATURAL GAS - ABANDON GAS MAIN

COL ELECTRIC, WINDSTREAM, & CHARTER- REPLACE POLE & TIE EX O/H LINE TO NEW POLE.

DUKE ENERGY - EX. POLE AND O/H LINE TO BE REMOVED

DUKE ENERGY - REMOVE POLE, O/H LINE, AND GUY

COL ELECTRIC, WINDSTREAM, & CHARTER- CONNECT EX O/H LINES TO NEW JOINT USE POLE

CITY OF LEXINGTON ELECTRIC - REMOVE POWER POLE & TRANSFORMER

WINDSTREAM - ADJ. O/H LINES TO NEW POLE

COL ELECTRIC, WINDSTREAM, & CHARTER- REMOVE JOINT USE POLE

COL ELECTRIC, WINDSTREAM, & CHARTER- NEW JOINT USE POLE AND ADJ. O/H LINES TO NEW POLE

COL ELECTRIC & CHARTER - ADJ. O/H LINES TO NEW POLE

-L- POT Sta. 24+5072=-

-Y5- Pot Sta. 10+00.00=

-L- POT Sta. 27+0256=-

-Y6- Pot Sta. 10+00.00=

-Y7- POT Sta. 10+00.00

-Y8- POT Sta. 10+00.00
N 87° 41' 28.5" E

DUKE ENERGY - REMOVE POLE AND O/H LINE

-L- POT Sta. 33+90.88=

-Y9- Pot Sta. 10+00.00

-Y10- POT Sta. 10+00.00

COL ELECTRIC - POWER POLE TO BE REMOVED

COL ELECTRIC, WINDSTREAM, & CHARTER
INSTALL JOINT USE POLE & O/H LINE

S 87° 43' 51.5" E
-Y6- POT Sta. 11+14.20

-Y6- POT Sta. 11+67.74

COL ELECTRIC, WINDSTREAM, & CHARTER-CONNECT EX O/H LINES TO NEW JOINT USE POLE

-L- POT Sta. 27+2458=-

-Y7- POT Sta. 11+74.40

DUKE ENERGY - INSTALL POLE, O/H LINE, AND GUY

COL ELECTRIC - REMOVE GUY & POLE

COL NATURAL GAS - ABANDON GAS MAIN

DUKE ENERGY - INSTALL POLE & O/H LINE

COL ELECTRIC - REMOVE GUY POLES(2) & GUYS

COL ELECTRIC - TIE O/H LINE TO EX. POLE

COL NATURAL GAS - ABANDON GAS MAINS

COL ELECTRIC, WINDSTREAM, & CHARTER - TIE O/H LINES TO EX. POLE

DUKE ENERGY - INSTALL POWER POLE & GUY

COL ELECTRIC, WINDSTREAM, & CHARTER - EXST JOINT USE POLE TO BE REMOVED

DUKE ENERGY - INSTALL POLE, O/H LINE, & GUY

COL ELECTRIC, WINDSTREAM, & CHARTER - NEW JOINT USE POLE, O/H LINES, & GUY

COL ELECTRIC, WINDSTREAM, & CHARTER - TIE O/H LINE TO EX POLE

COL ELECTRIC, WINDSTREAM, & CHARTER- REPLACE POLE & TIE EX O/H LINES TO NEW POLE.

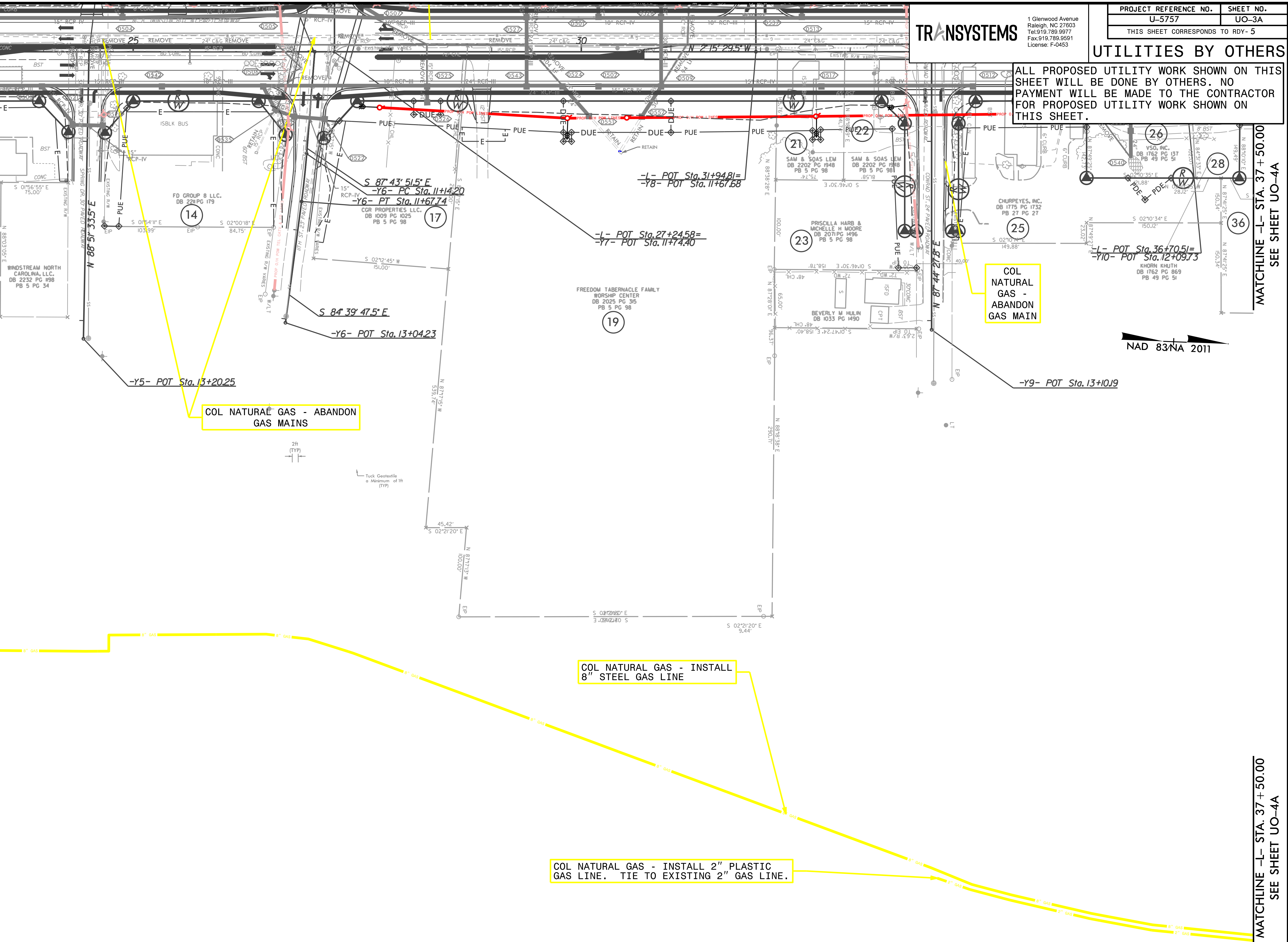
2h
(TYP)

1/8" Tuck Geotextile
o Minimum of 1ft
(TYP)

5/14/99
5/1/2024
U:\001-5757_Ut_5_U03A_psh.dgn
TISEBROOK

MATCHLINE -L- STA. 23 + 50.00
SEE SHEET UO-2A

MATCHLINE -L- STA. 23 + 50.00
SEE SHEET UO-2A



TRANSYSTEMS

1 Glenwood Avenue
Raleigh, NC 27603
Tel: 919.789.9977
Fax: 919.789.9591
License: F-0453

PROJECT REFERENCE NO.	SHEET NO.
U-5757	UO-3A
THIS SHEET CORRESPONDS TO RDY-5	

UTILITIES BY OTHERS

ALL PROPOSED UTILITY WORK SHOWN ON THIS SHEET WILL BE DONE BY OTHERS. NO PAYMENT WILL BE MADE TO THE CONTRACTOR FOR PROPOSED UTILITY WORK SHOWN ON THIS SHEET.

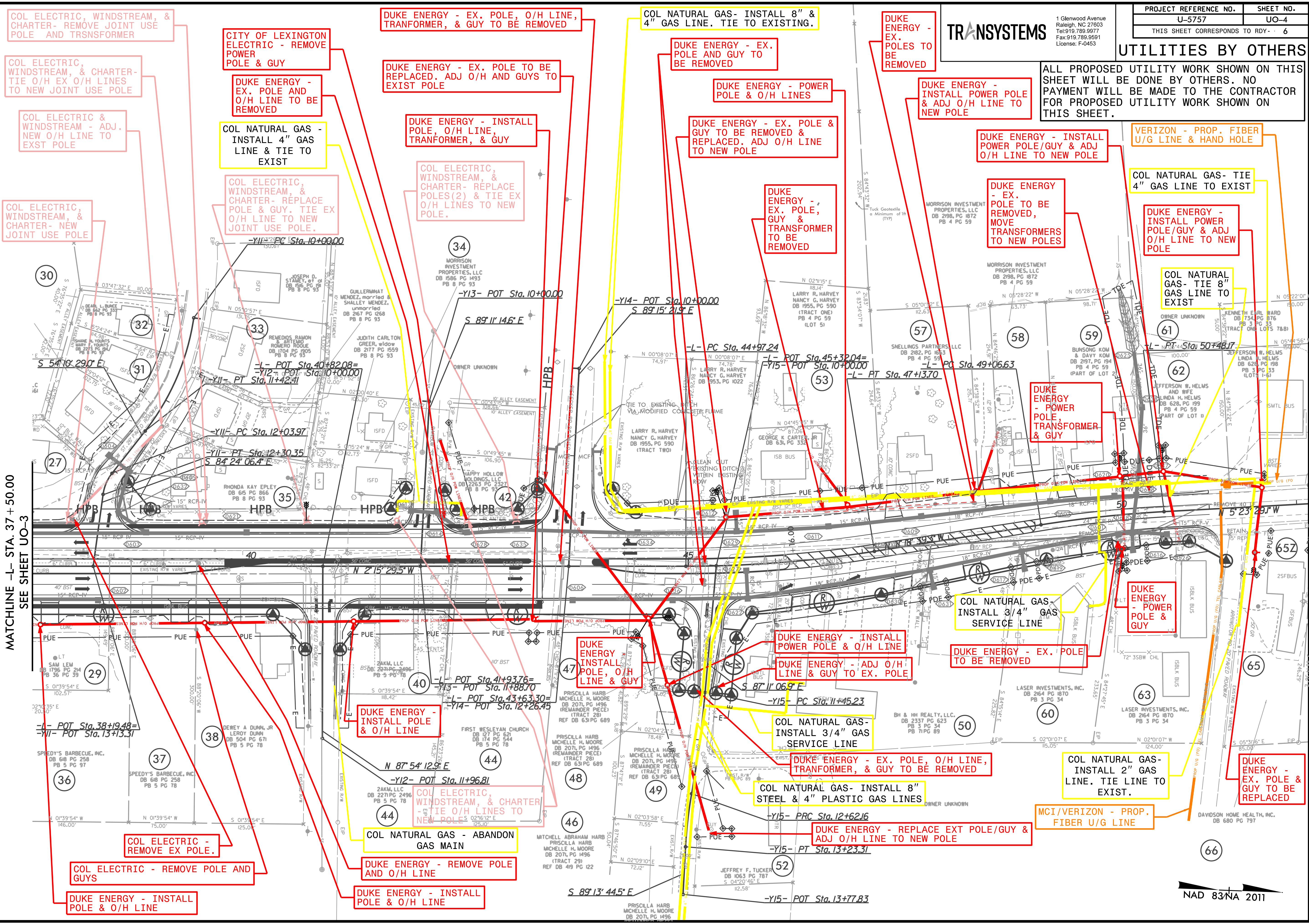
MATCHLINE -L- STA. 37 + 50.00
SEE SHEET UO-4A

MATCHLINE -L- STA. 37 + 50.00
SEE SHEET UO-4A

5/14/2024

5/14/2024

MATCHLINE -L- STA. 37 + 50.00
SEE SHEET UO-3



COL ELECTRIC, WINDSTREAM, & CHARTER- REMOVE JOINT USE POLE AND TRNSFORMER

COL ELECTRIC, WINDSTREAM, & CHARTER- TIE O/H EX O/H LINES TO NEW JOINT USE POLE

COL ELECTRIC & WINDSTREAM - ADJ. NEW O/H LINE TO EXST POLE

COL ELECTRIC, WINDSTREAM, & CHARTER- NEW JOINT USE POLE

CITY OF LEXINGTON ELECTRIC - REMOVE POLE & GUY

DUKE ENERGY - EX. POLE AND O/H LINE TO BE REMOVED

COL NATURAL GAS - INSTALL 4" GAS LINE & TIE TO EXIST

COL ELECTRIC, WINDSTREAM, & CHARTER- REPLACE POLE & GUY. TIE EX O/H LINE TO NEW JOINT USE POLE.

DUKE ENERGY - EX. POLE, O/H LINE, TRANSFORMER, & GUY TO BE REMOVED

DUKE ENERGY - EX. POLE TO BE REPLACED. ADJ O/H AND GUYS TO EXIST POLE

DUKE ENERGY - INSTALL POLE, O/H LINE, TRANSFORMER, & GUY

COL ELECTRIC, WINDSTREAM, & CHARTER- REPLACE POLES(2) & TIE EX O/H LINES TO NEW POLE.

COL NATURAL GAS- INSTALL 8" & 4" GAS LINE. TIE TO EXISTING.

DUKE ENERGY - EX. POLE AND GUY TO BE REMOVED

DUKE ENERGY - POWER POLE & O/H LINES

DUKE ENERGY - EX. POLE & GUY TO BE REMOVED & REPLACED. ADJ O/H LINE TO NEW POLE

DUKE ENERGY - EX. POLE, GUY & TRANSFORMER TO BE REMOVED

DUKE ENERGY - EX. POLES TO BE REMOVED

DUKE ENERGY - INSTALL POWER POLE & ADJ O/H LINE TO NEW POLE

DUKE ENERGY - EX. POLE TO BE REMOVED, MOVE TRANSFORMERS TO NEW POLES

DUKE ENERGY - INSTALL POWER POLE/GUY & ADJ O/H LINE TO NEW POLE

ALL PROPOSED UTILITY WORK SHOWN ON THIS SHEET WILL BE DONE BY OTHERS. NO PAYMENT WILL BE MADE TO THE CONTRACTOR FOR PROPOSED UTILITY WORK SHOWN ON THIS SHEET.

VERIZON - PROP. FIBER U/G LINE & HAND HOLE

COL NATURAL GAS- TIE 4" GAS LINE TO EXIST

DUKE ENERGY - INSTALL POWER POLE/GUY & ADJ O/H LINE TO NEW POLE

COL NATURAL GAS- TIE 8" GAS LINE TO EXIST

DUKE ENERGY - POWER POLE, TRANSFORMER & GUY

COL NATURAL GAS. INSTALL 3/4" GAS SERVICE LINE

DUKE ENERGY - POWER POLE & GUY

DUKE ENERGY - INSTALL POWER POLE & O/H LINE

DUKE ENERGY - ADJ O/H LINE & GUY TO EX. POLE

DUKE ENERGY - EX. POLE TO BE REMOVED

DUKE ENERGY - INSTALL POLE & O/H LINE

DUKE ENERGY INSTALL POLE, O/H LINE & GUY

COL NATURAL GAS- INSTALL 3/4" GAS SERVICE LINE

DUKE ENERGY - EX. POLE, O/H LINE, TRANSFORMER, & GUY TO BE REMOVED

COL NATURAL GAS- INSTALL 8" STEEL & 4" PLASTIC GAS LINES

COL NATURAL GAS- INSTALL 2" GAS LINE. TIE LINE TO EXIST.

DUKE ENERGY - EX. POLE & GUY TO BE REPLACED

-L- POT Sta. 38+19.48 = -Y11- POT Sta. 13+13.31

COL ELECTRIC - REMOVE EX POLE.

COL ELECTRIC - REMOVE POLE AND GUYS

DUKE ENERGY - INSTALL POLE & O/H LINE

COL ELECTRIC, WINDSTREAM, & CHARTER - TIE O/H LINES TO NEW POLE

COL NATURAL GAS - ABANDON GAS MAIN

DUKE ENERGY - REMOVE POLE AND O/H LINE

DUKE ENERGY - INSTALL POLE & O/H LINE

DUKE ENERGY - EX. POLE, O/H LINE, TRANSFORMER, & GUY TO BE REMOVED

DUKE ENERGY - REPLACE EXT POLE/GUY & ADJ O/H LINE TO NEW POLE

MCI/VERIZON - PROP. FIBER U/G LINE

TRANSYSTEMS

1 Glenwood Avenue
Raleigh, NC 27603
Tel: 919.789.9977
Fax: 919.789.9591
License: F-0453

PROJECT REFERENCE NO.	SHEET NO.
U-5757	UO-4
THIS SHEET CORRESPONDS TO RDY- 6	

UTILITIES BY OTHERS

NAD 83/NA 2011

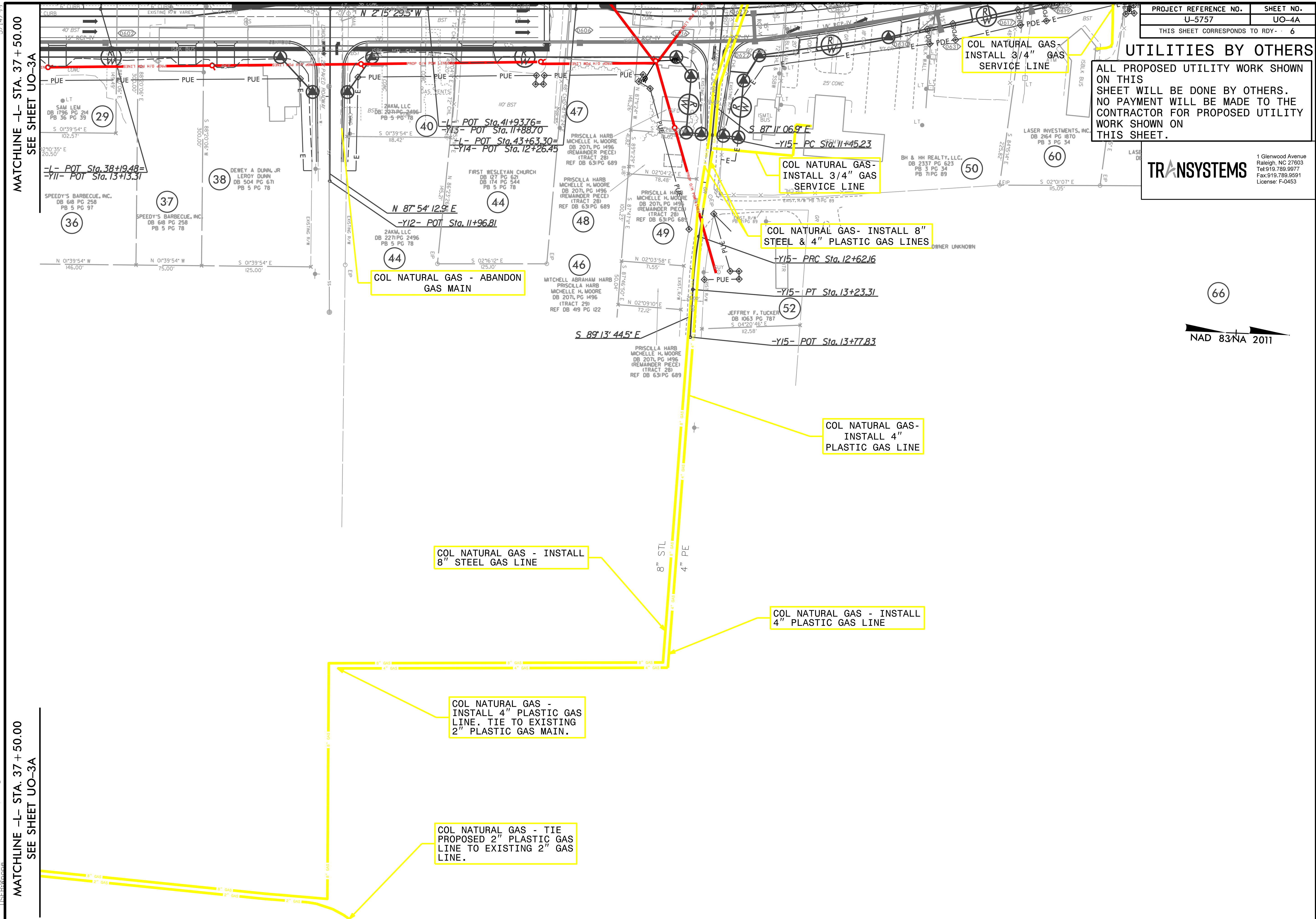
UTILITIES BY OTHERS

ALL PROPOSED UTILITY WORK SHOWN ON THIS SHEET WILL BE DONE BY OTHERS. NO PAYMENT WILL BE MADE TO THE CONTRACTOR FOR PROPOSED UTILITY WORK SHOWN ON THIS SHEET.

TRANSYSTEMS
 1 Glenwood Avenue
 Raleigh, NC 27603
 Tel: 919.789.9977
 Fax: 919.789.9591
 License: F-0453

66

NAD 83/NA 2011



5/14/2024 U-5757_Ut-6_U04A_psh.dgn