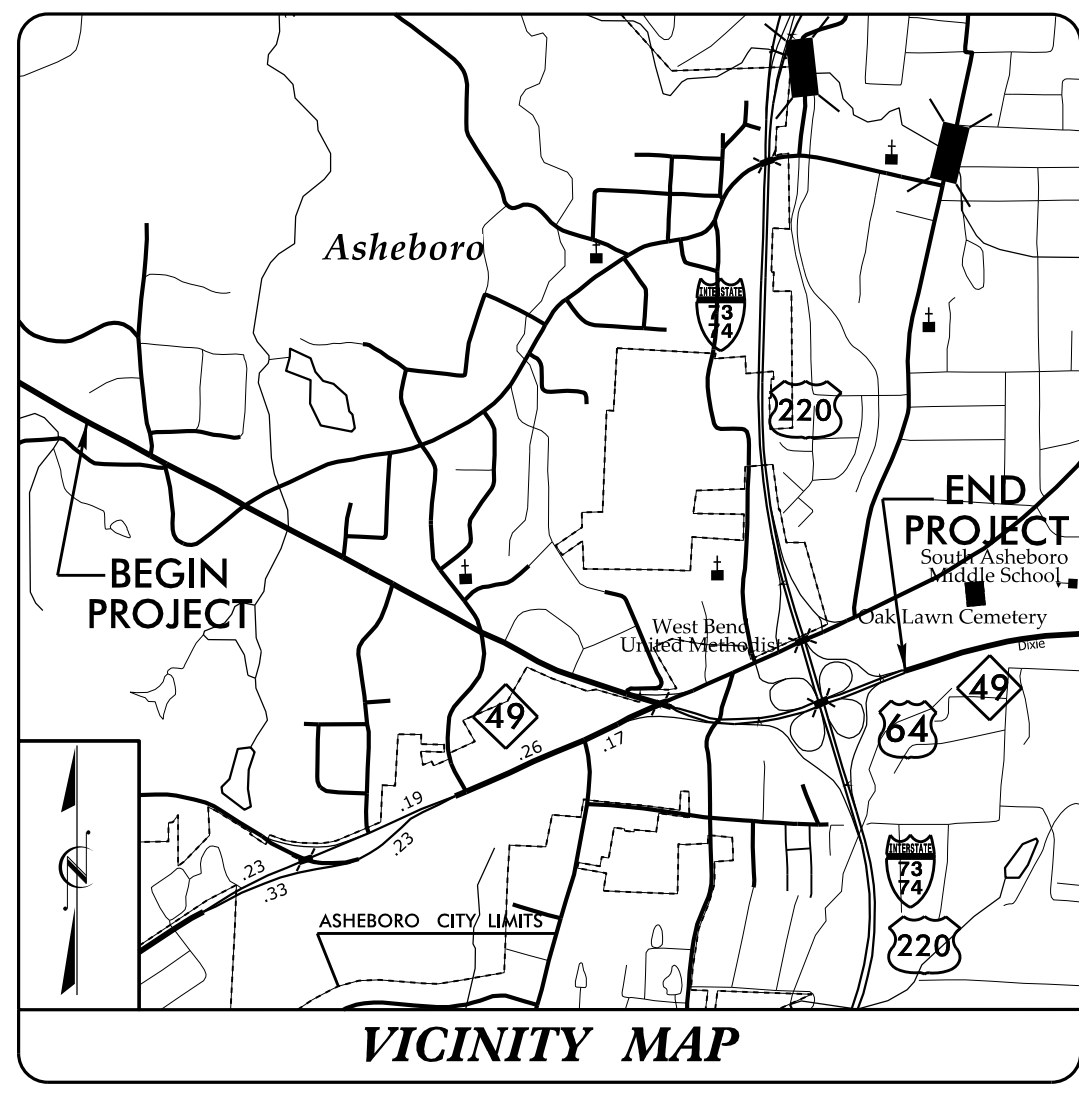


09/08/99

See Sheet 1A For Index of Sheets
See Sheet 1B For Conventional Plan Sheet Symbols



STATE OF NORTH CAROLINA DIVISION OF HIGHWAYS

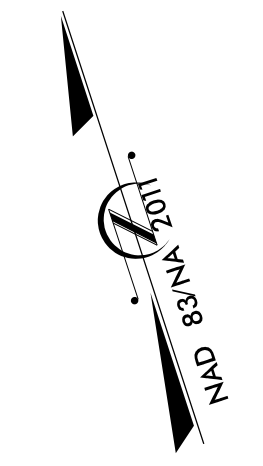
UTILITIES BY OTHERS PLANS RANDOLPH COUNTY

**LOCATION: US 64 FROM ASHEBORO BYPASS TO
EAST OF I-73/74/US 220 TO ASHEBORO**

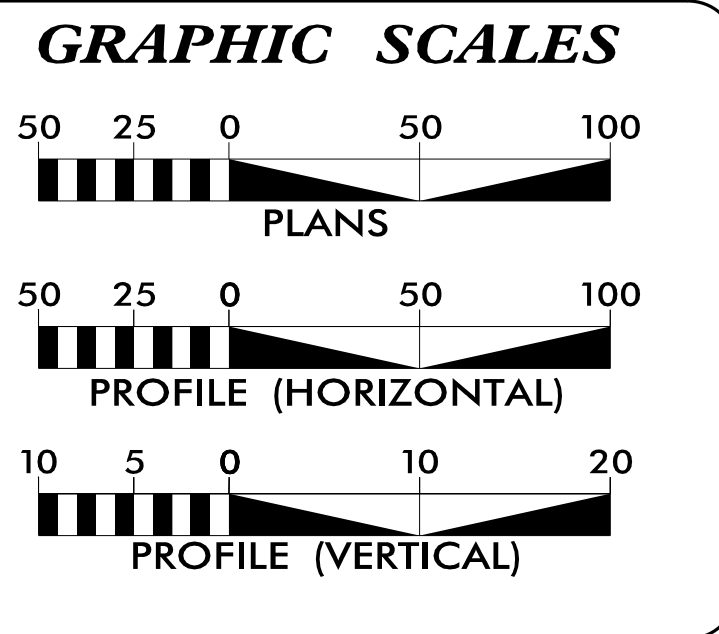
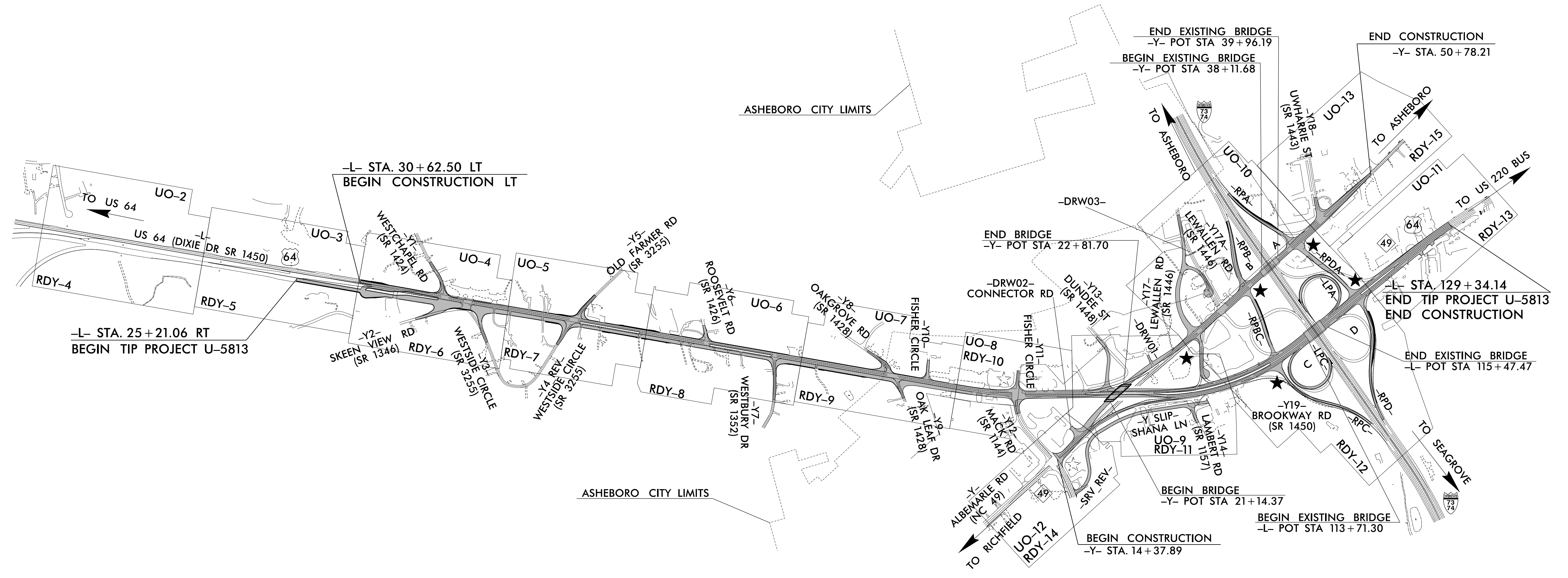
**TYPE OF WORK: RELOCATE GAS, POWER,
TELEPHONE, AND CATV**

T.I.P. NO.	SHEET NO.
U-5813	UO-1

NOTE:
ALL UTILITY WORK SHOWN ON THIS SHEET WILL BE DONE BY OTHERS. NO PAYMENT WILL BE MADE TO THE CONTRACTOR FOR UTILITY WORK SHOWN ON THIS SHEET.



TIP PROJECT: U-5813



SHEET NO.:	DESCRIPTION:
UO-1	TITLE SHEET
UO-2 THRU UO-13	UBO PLAN SHEETS

UTILITY OWNERS WITH CONFLICTS
(A) POWER - DUKE ENERGY
(B) POWER - RANDOLPH EMC
(C) GAS - DUKE ENERGY
(D) PHONE - BRIGHTSPEED
(E) CATV - CHARTER
(D) WATERSEWER - CITY OF ASHEBORO

PREPARED IN THE OFFICE OF:

Weston & Sampson NC
 License: C-4847
 2052 Energy Drive Apex, NC 27502
 Phone: 919.297.0220 westonandsampson.com

JIM FORBES UTILITY PROJECT MANAGER
D. VONDENHUEVEL PROJECT UTILITY COORDINATOR
KEVIN ZDEB PROJECT UTILITY ENGINEER

STATE OF NORTH CAROLINA
 DEPARTMENT OF TRANSPORTATION

DIVISION OF HIGHWAYS
 DIVISION 8
 121 DOT DRIVE
 CARTHAGE, NC 28327
 PHONE (910) 773-8000
 FAX (910) 947-3873

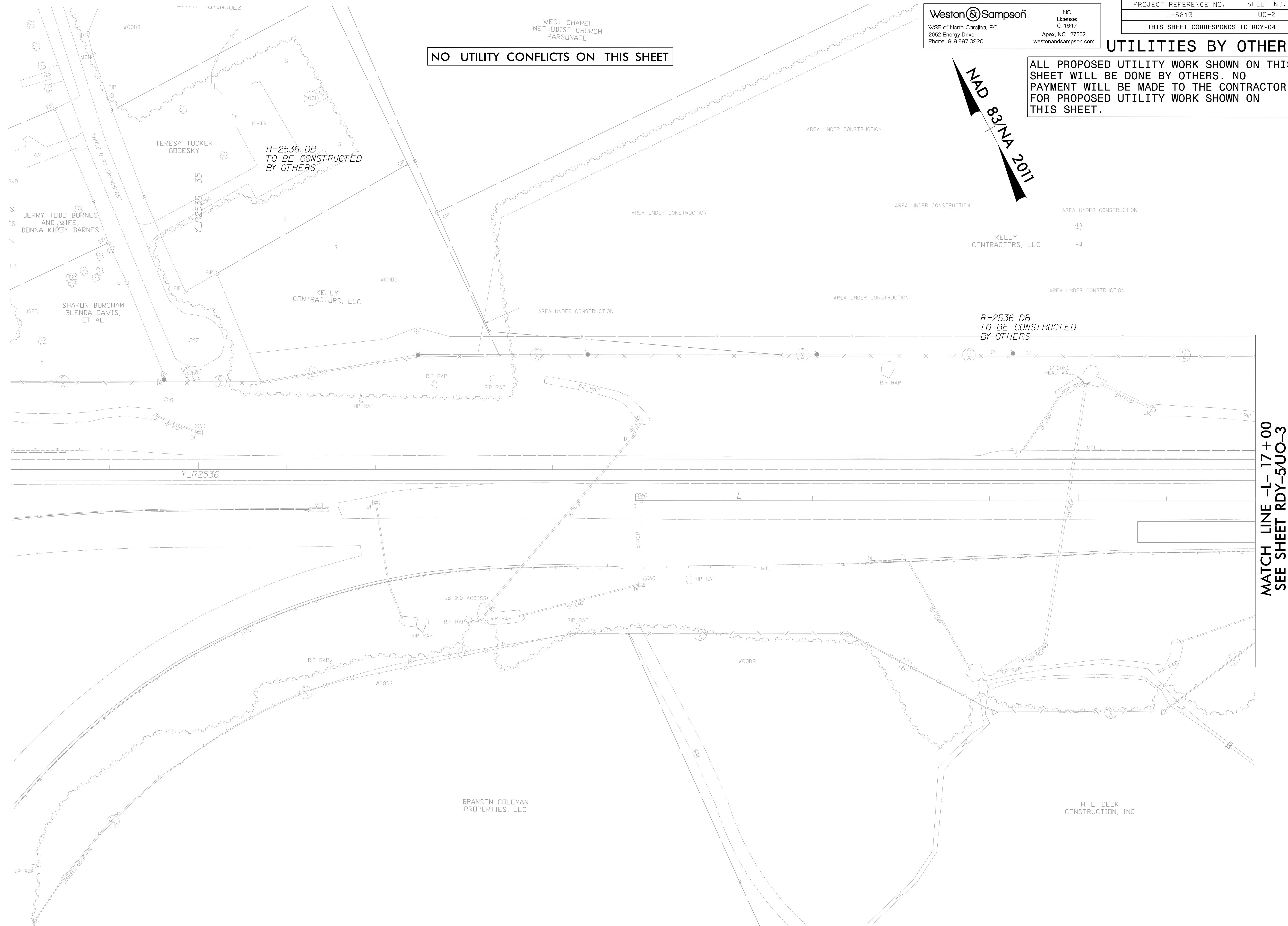
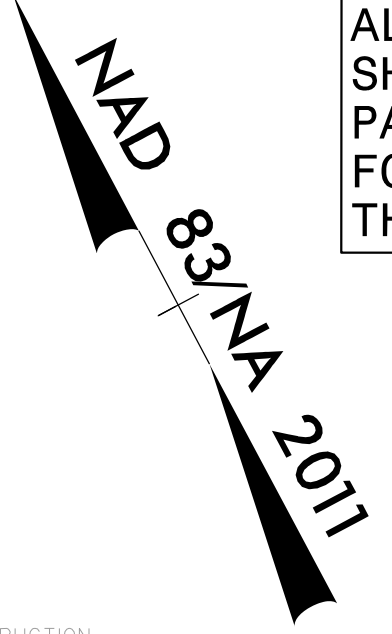
REUBEN BLAKLEY, PE DIVISION CONSTRUCTION ENGR
TRAVIS L. MORGAN, PE DIVISION UTILITY ENGINEER
JAMIE YOW DIVISION UTILITY COORDINATOR

11/28/2023
E:\NCS_Cor_y0ldServer\Engineer\Jobs\0696\025\1700_U-5813_Randolph\Utilities\Coordination\Ubo\U5813_ut_fsh_uo01_psh.dgn
3:42:59 PM

Weston & Sampson
 NC License: C-4647
 WSE of North Carolina, PC
 2052 Energy Drive
 Phone: 919.297.0220
 Apex, NC 27502
 westonsandsampson.com

NO UTILITY CONFLICTS ON THIS SHEET

UTILITIES BY OTHERS
ALL PROPOSED UTILITY WORK SHOWN ON THIS SHEET WILL BE DONE BY OTHERS. NO PAYMENT WILL BE MADE TO THE CONTRACTOR FOR PROPOSED UTILITY WORK SHOWN ON THIS SHEET.



MATCH LINE -L- 17+00
SEE SHEET RDY-5/UO-3

8/17/99

I:\10\2023\1001\WSE\Projects\NC\Local\Server\Engineer\Jobs\0696\025\11700_U-5813_Randolph\Utilities\Coordination\U6\U5813_ut_rdy05_uo03_psh.dgn

NO UTILITY CONFLICTS ON THIS SHEET

Weston & Sampson
WSE of North Carolina, PC
2052 Energy Drive
Phone: 919.287.0220
NC License: C-4647
Apex, NC 27502
westonandsampson.com

PROJECT REFERENCE NO.	SHEET NO.
U-5813	UO-3
THIS SHEET CORRESPONDS TO RDY-05	

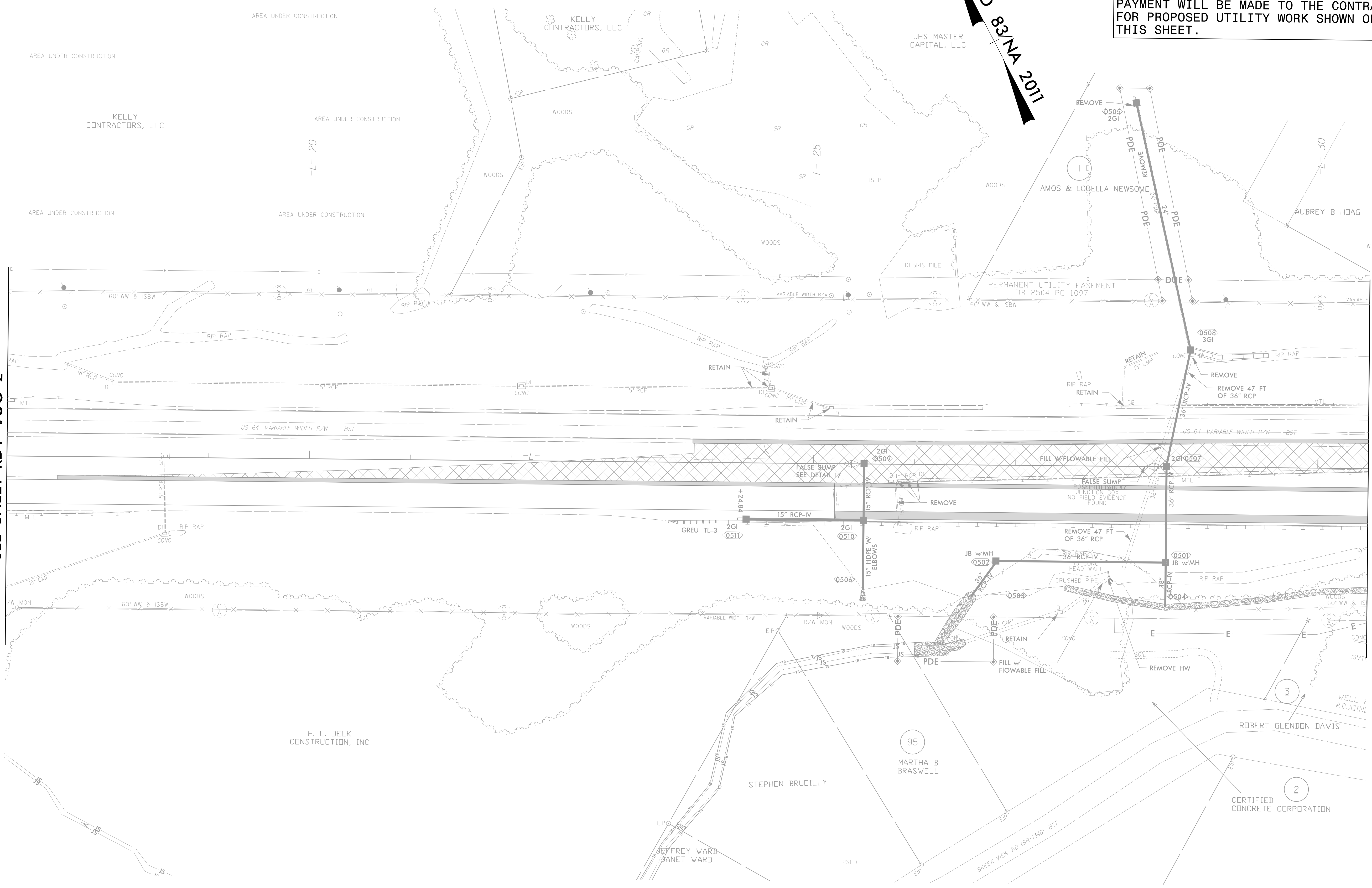
UTILITIES BY OTHERS

ALL PROPOSED UTILITY WORK SHOWN ON THIS SHEET WILL BE DONE BY OTHERS. NO PAYMENT WILL BE MADE TO THE CONTRACTOR FOR PROPOSED UTILITY WORK SHOWN ON THIS SHEET.



MATCH LINE -L- 17+00
SEE SHEET RDY-4UO-2

MATCH LINE -L- 30+50
SEE SHEET RDY-6UO-4



11/30/2023 11:59 AM

NAD 83/NA 2011

Weston Sampson
 NC License: C-4847
 WSE of North Carolina, PC
 2052 Energy Drive
 Phone: 919.297.0220
 Apex, NC 27502
 westonandsampson.com

PROJECT REFERENCE NO.	SHEET NO.
U-5813	UO-4
THIS SHEET CORRESPONDS TO RDY-06	

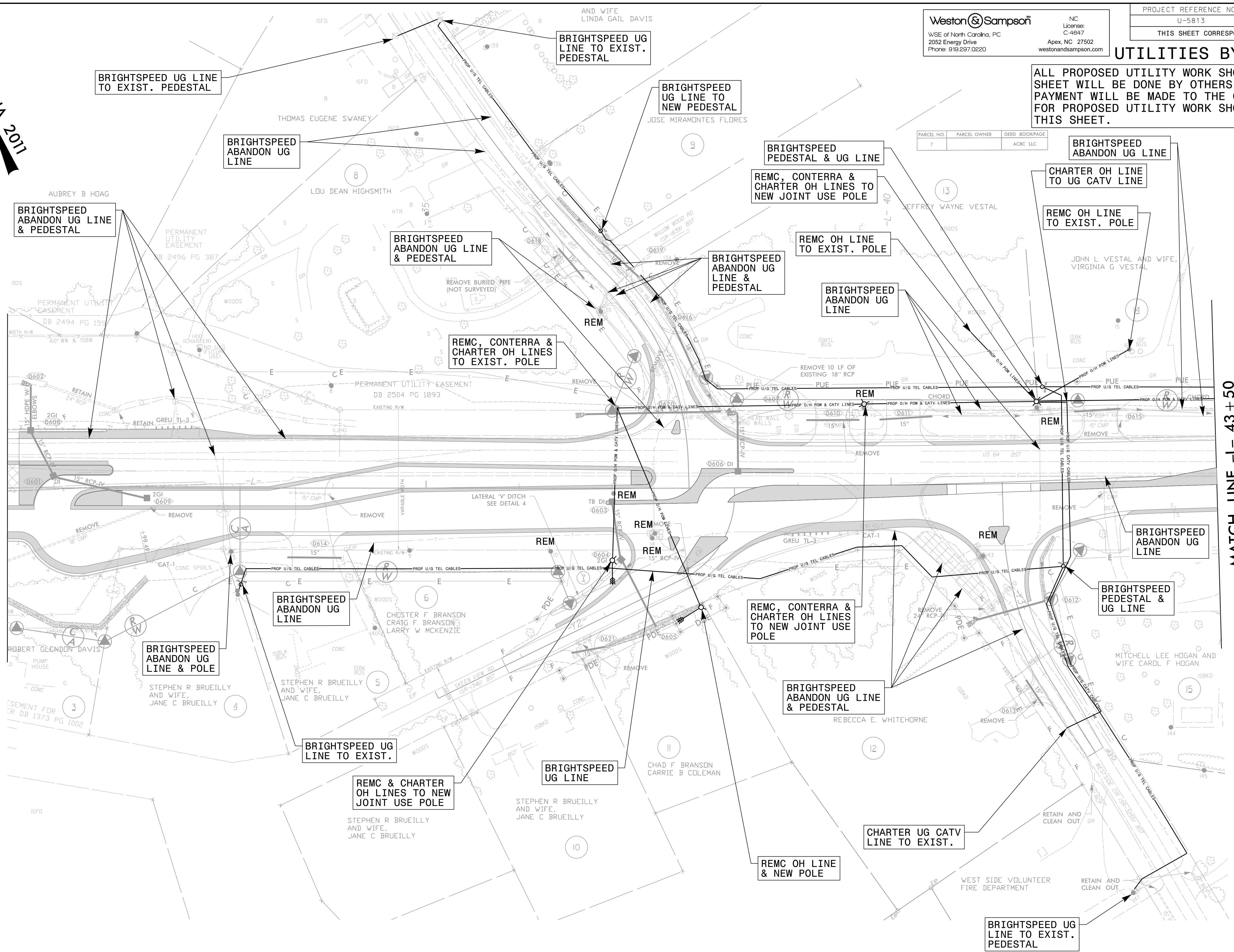
UTILITIES BY OTHERS

ALL PROPOSED UTILITY WORK SHOWN ON THIS SHEET WILL BE DONE BY OTHERS. NO PAYMENT WILL BE MADE TO THE CONTRACTOR FOR PROPOSED UTILITY WORK SHOWN ON THIS SHEET.

PARCEL NO.	PARCEL OWNER	DEED BOOK/PAGE
7		ACBC LLC

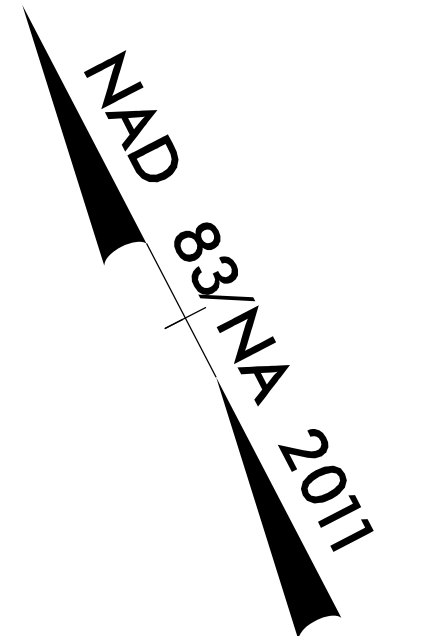
MATCH LINE -L- 30+50
SEE SHEET RDY-5UO-3

MATCH LINE -L- 43+50
SEE SHEET RDY-7UO-5



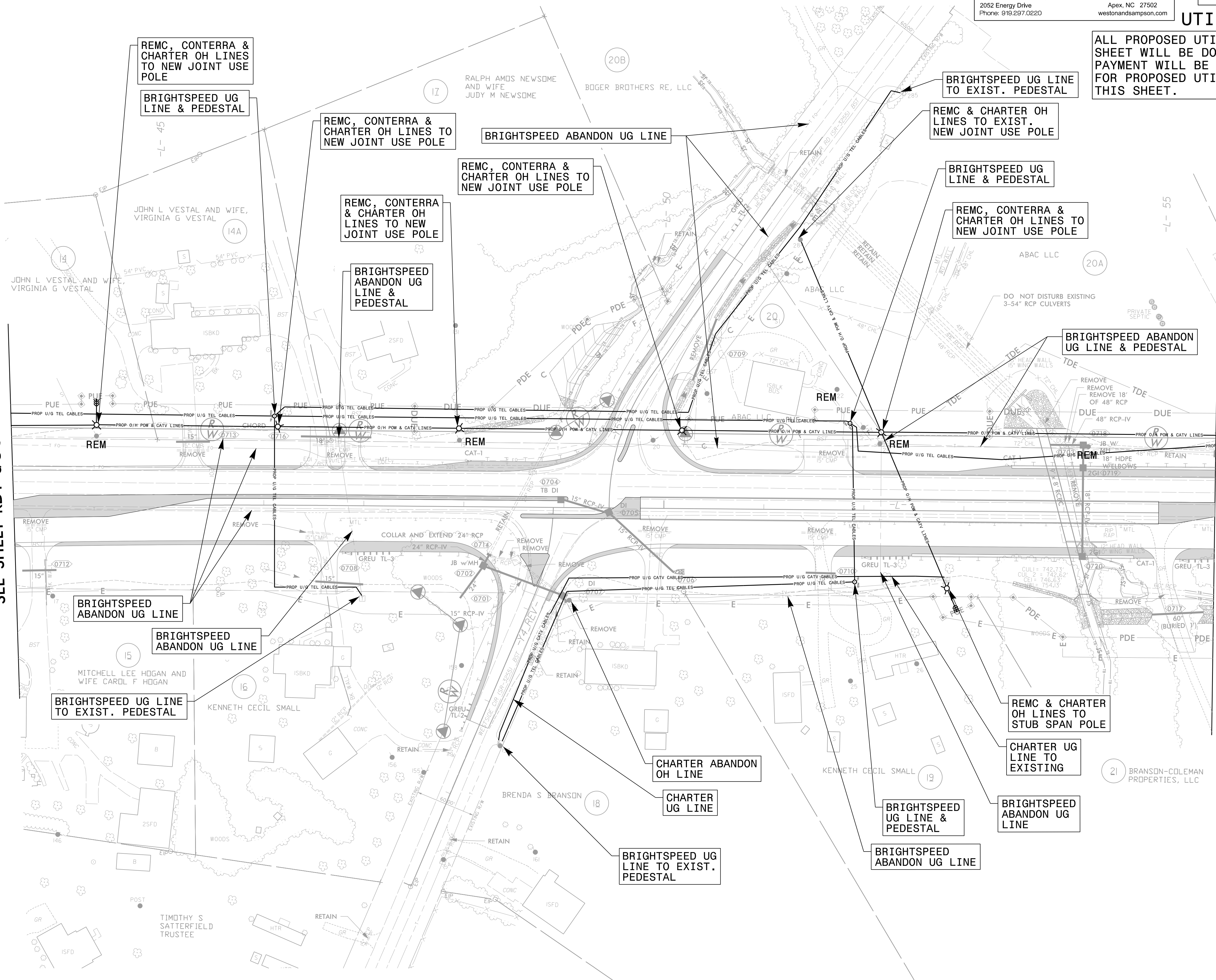
UTILITIES BY OTHERS

ALL PROPOSED UTILITY WORK SHOWN ON THIS SHEET WILL BE DONE BY OTHERS. NO PAYMENT WILL BE MADE TO THE CONTRACTOR FOR PROPOSED UTILITY WORK SHOWN ON THIS SHEET.



MATCH LINE -L- 43+50
SEE SHEET RDY-6UO-4

MATCH LINE -L- 55+50
SEE SHEET RDY-8UO-6



MATCH LINE -L- 55 + 50
SEE RDY-7UO-5

MATCH LINE -L- 69 + 00
SEE RDY-9UO-7

PARCEL NO.	PARCEL OWNER	DEED BOOK/PAGE
292	RICHARD DOSIER CRIDER AND WIFE, DOLLIE FRYER CRIDER	

Weston & Sampson
 NC License: C-4647
 Apex, NC 27502
 westonandsampson.com

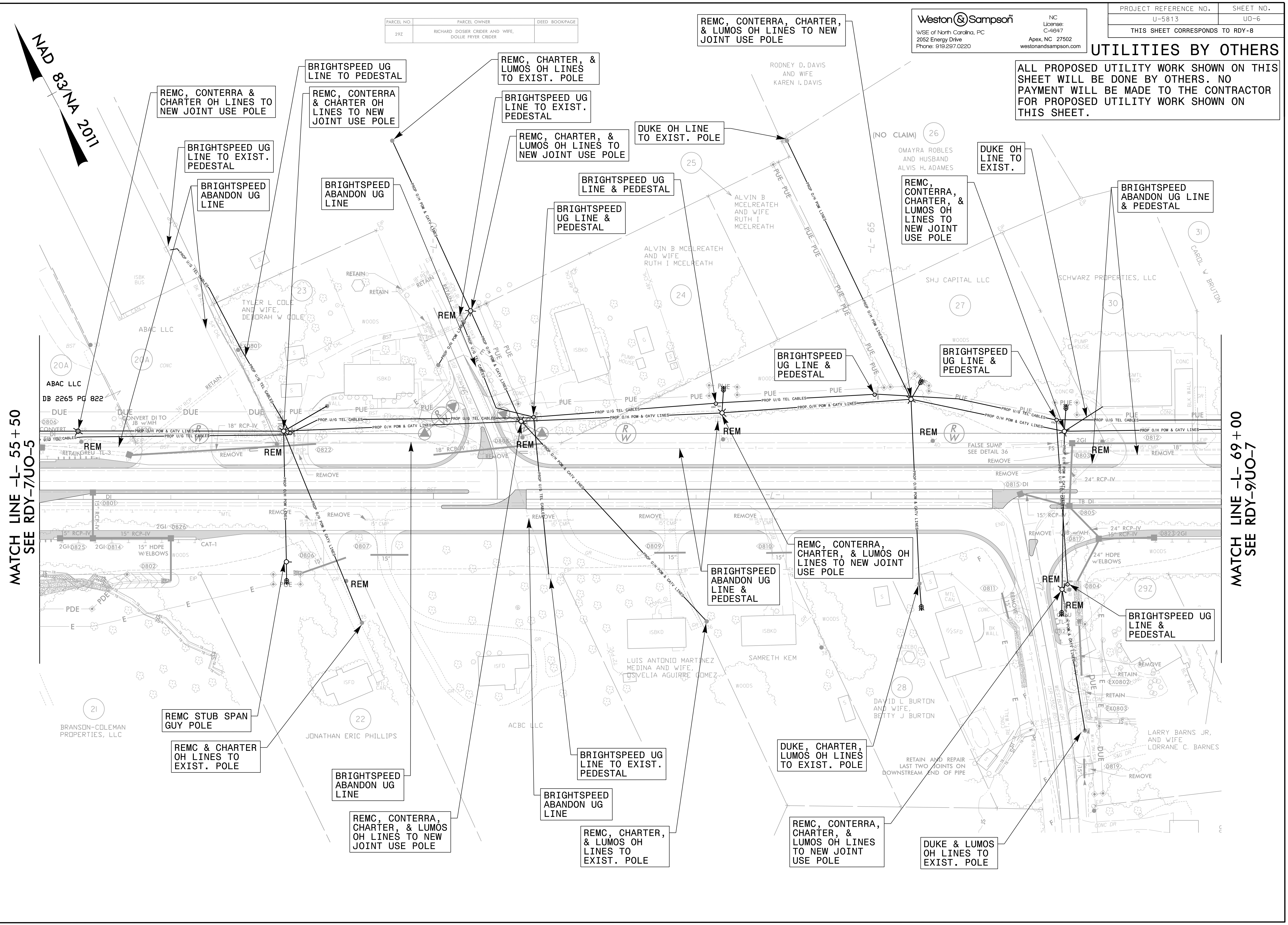
WSE of North Carolina, PC
 2052 Energy Drive
 Phone: 919.297.0220

PROJECT REFERENCE NO.	SHEET NO.
U-5813	UO-6

THIS SHEET CORRESPONDS TO RDY-8

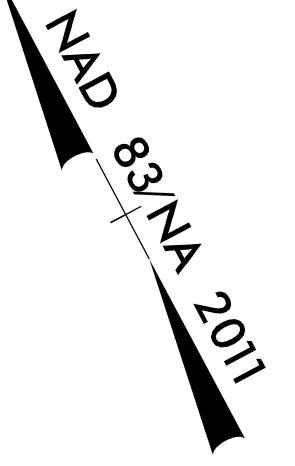
UTILITIES BY OTHERS

ALL PROPOSED UTILITY WORK SHOWN ON THIS SHEET WILL BE DONE BY OTHERS. NO PAYMENT WILL BE MADE TO THE CONTRACTOR FOR PROPOSED UTILITY WORK SHOWN ON THIS SHEET.

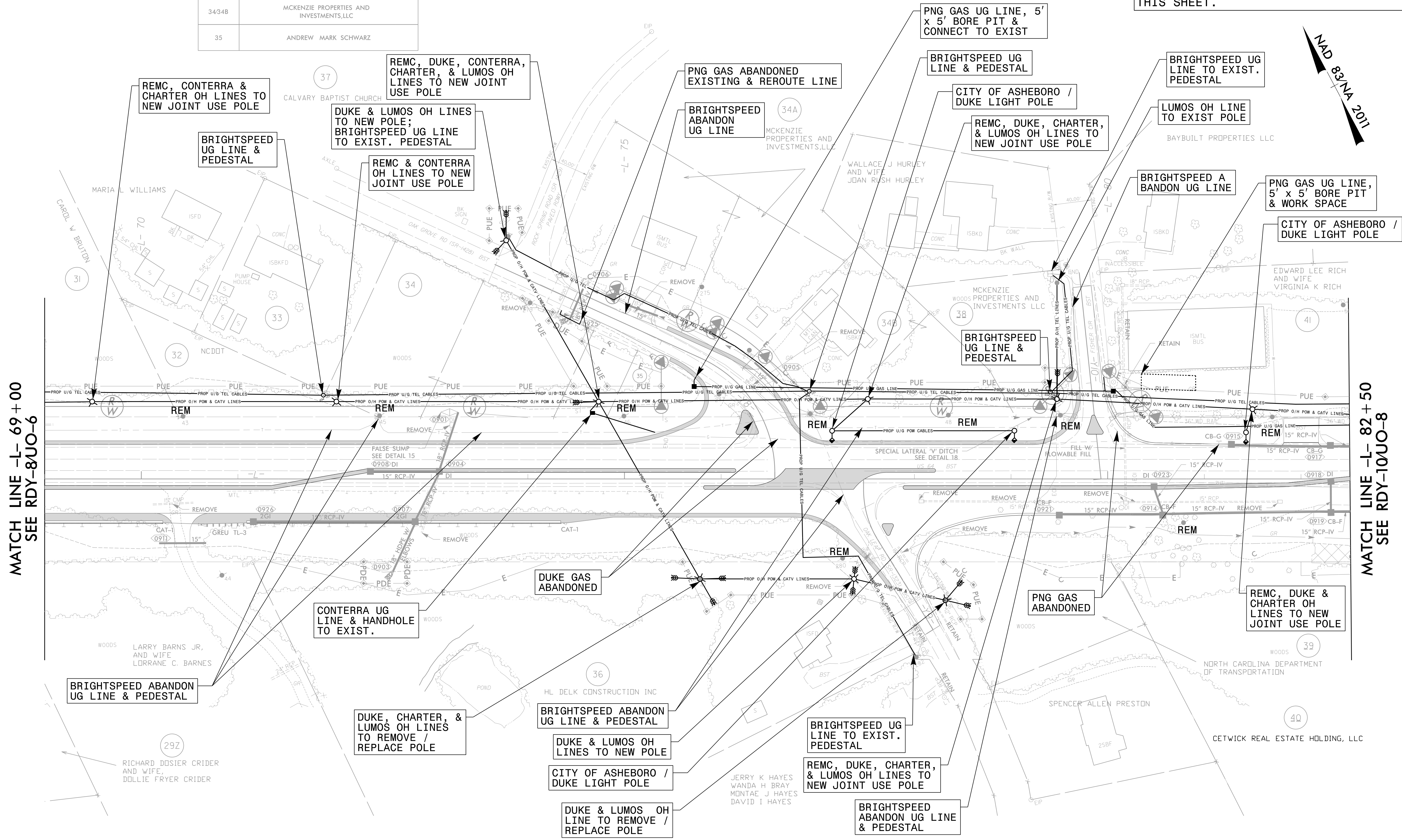


UTILITIES BY OTHERS

ALL PROPOSED UTILITY WORK SHOWN ON THIS SHEET WILL BE DONE BY OTHERS. NO PAYMENT WILL BE MADE TO THE CONTRACTOR FOR PROPOSED UTILITY WORK SHOWN ON THIS SHEET.



PARCEL NO.	PARCEL OWNER
33	THE JESSE TATE LEONARD FAMILY TRUST TRUSTEES PHYLIS LEONARD MARTENS JESSE TATE LEONARD
34/34B	MCKENZIE PROPERTIES AND INVESTMENTS, LLC
35	ANDREW MARK SCHWARZ



MATCH LINE -L- 69 + 00
SEE RDY-8UO-6

MATCH LINE -L- 82 + 50
SEE RDY-10UO-8

BRIGHTSPEED ABANDON UG LINE & PEDESTAL

CONTERRA UG LINE & HANDHOLE TO EXIST.

DUKE, CHARTER, & LUMOS OH LINES TO REMOVE / REPLACE POLE

BRIGHTSPEED ABANDON UG LINE & PEDESTAL

DUKE & LUMOS OH LINES TO NEW POLE

CITY OF ASHEBORO / DUKE LIGHT POLE

DUKE & LUMOS OH LINE TO REMOVE / REPLACE POLE

REMC, DUKE, CHARTER, & LUMOS OH LINES TO NEW JOINT USE POLE

BRIGHTSPEED ABANDON UG LINE & PEDESTAL

PNG GAS ABANDONED

REMC, DUKE & CHARTER OH LINES TO NEW JOINT USE POLE

PNG GAS UG LINE, 5' x 5' BORE PIT & CONNECT TO EXIST

BRIGHTSPEED UG LINE & PEDESTAL

CITY OF ASHEBORO / DUKE LIGHT POLE

REMC, DUKE, CHARTER, & LUMOS OH LINES TO NEW JOINT USE POLE

LUMOS OH LINE TO EXIST. PEDESTAL

BRIGHTSPEED ABANDON UG LINE

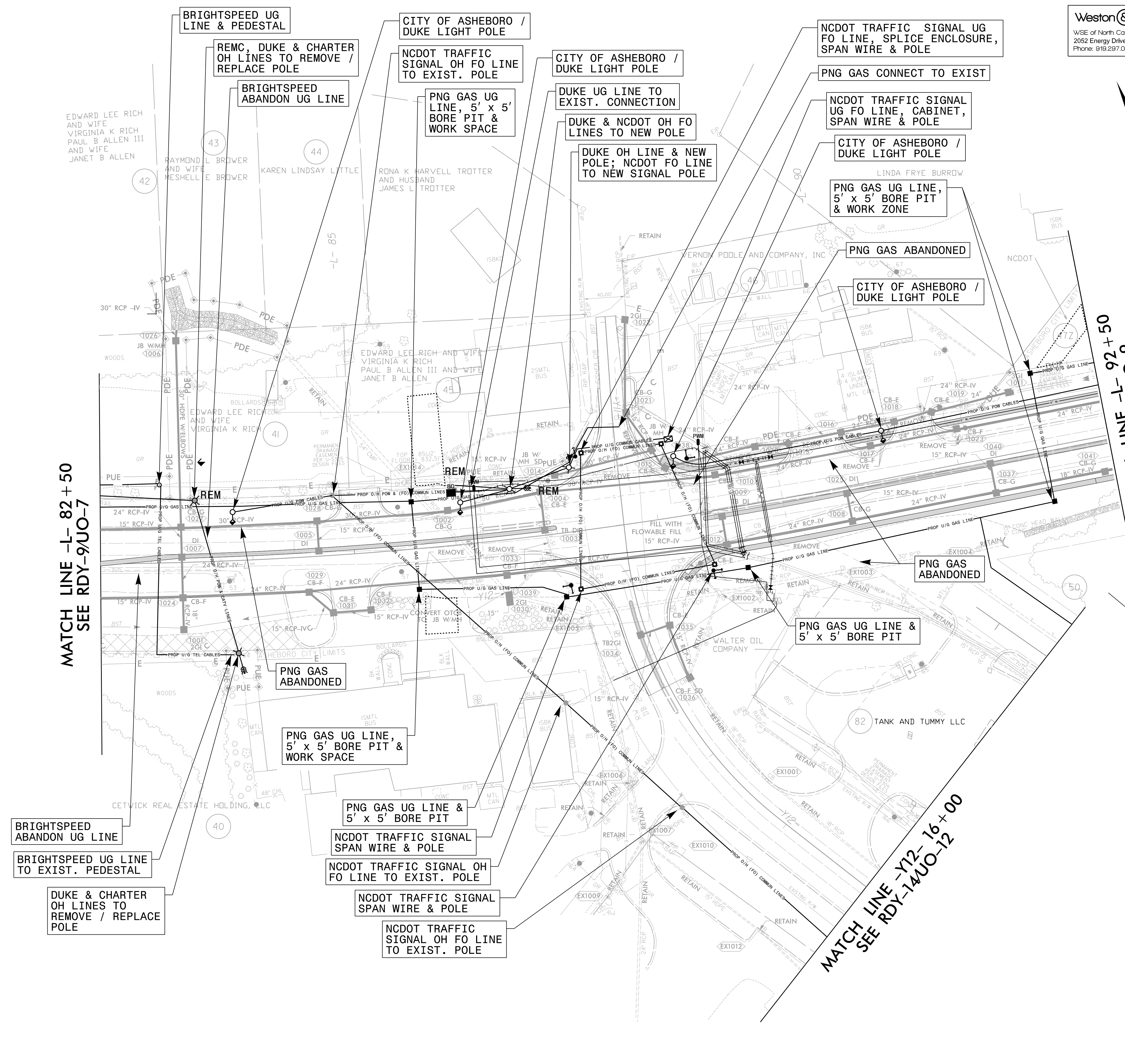
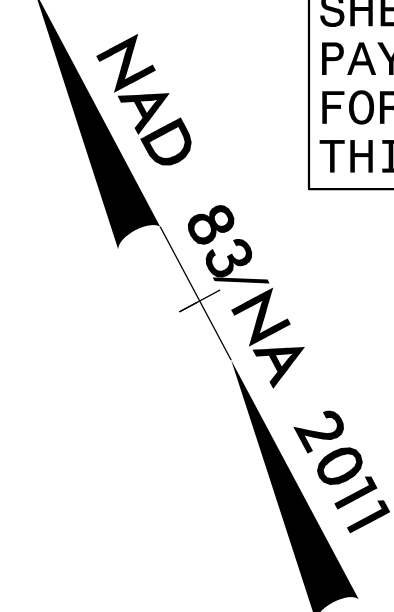
PNG GAS UG LINE, 5' x 5' BORE PIT & WORK SPACE

CITY OF ASHEBORO / DUKE LIGHT POLE

Weston Sampson
 NC License: C-4847
 WISE of North Carolina, PC
 2052 Energy Drive
 Phone: 919.297.0220
 Apex, NC 27502
 westonandsampson.com

UTILITIES BY OTHERS

ALL PROPOSED UTILITY WORK SHOWN ON THIS SHEET WILL BE DONE BY OTHERS. NO PAYMENT WILL BE MADE TO THE CONTRACTOR FOR PROPOSED UTILITY WORK SHOWN ON THIS SHEET.



MATCH LINE -L- 82 + 50
SEE RDY-9/UO-7

MATCH LINE -L- 92 + 50
SEE RDY-11/UO-9

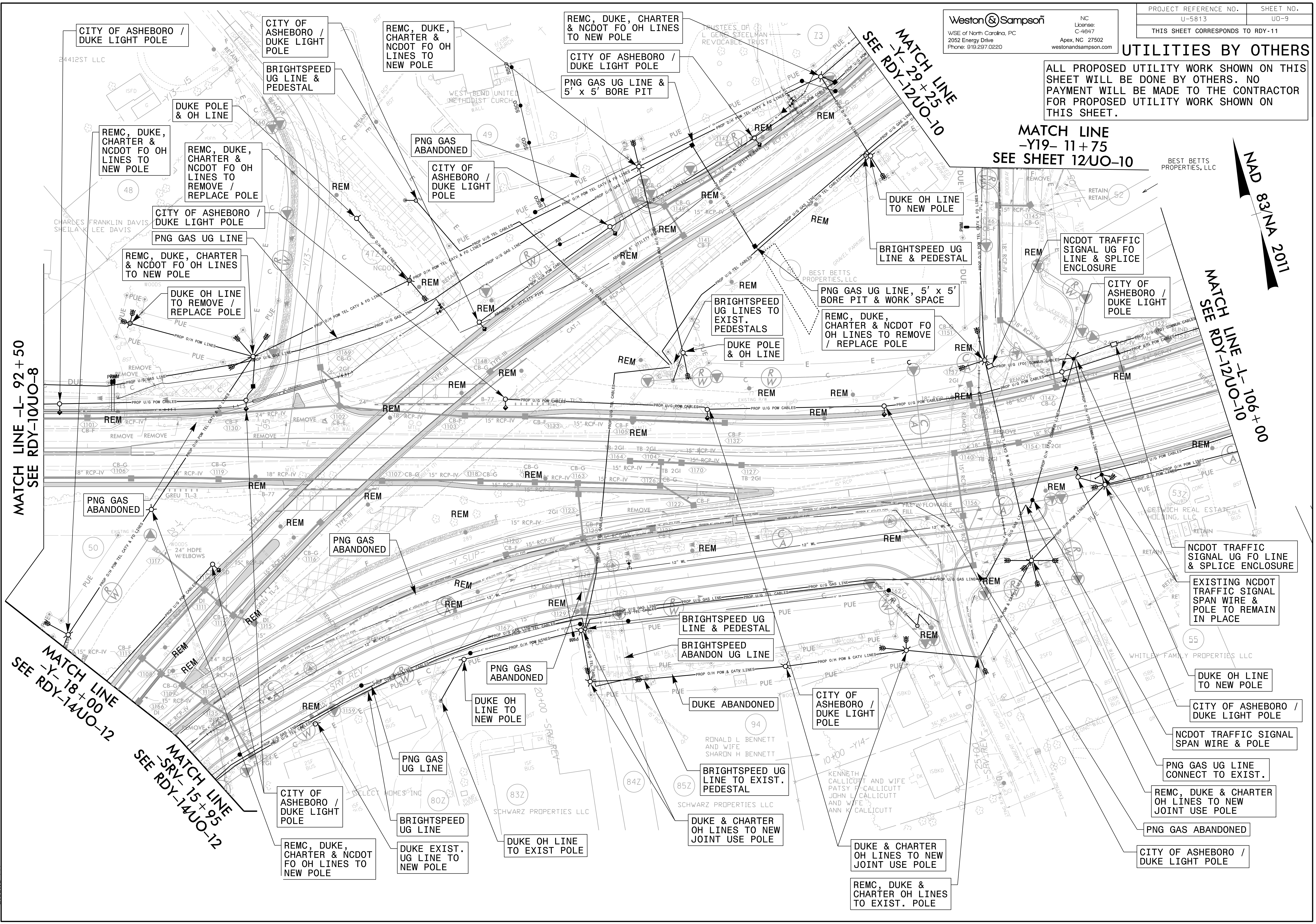
MATCH LINE -Y12- 16 + 00
SEE RDY-14/UO-12

STATE HIGHWAY PUBLIC WORKS COMMISSION

Weston Sampson
 NC License: C-4647
 WSE of North Carolina, PC
 2052 Energy Drive
 Apex, NC 27502
 Phone: 919.297.0220
 westonandsampson.com

UTILITIES BY OTHERS

ALL PROPOSED UTILITY WORK SHOWN ON THIS SHEET WILL BE DONE BY OTHERS. NO PAYMENT WILL BE MADE TO THE CONTRACTOR FOR PROPOSED UTILITY WORK SHOWN ON THIS SHEET.



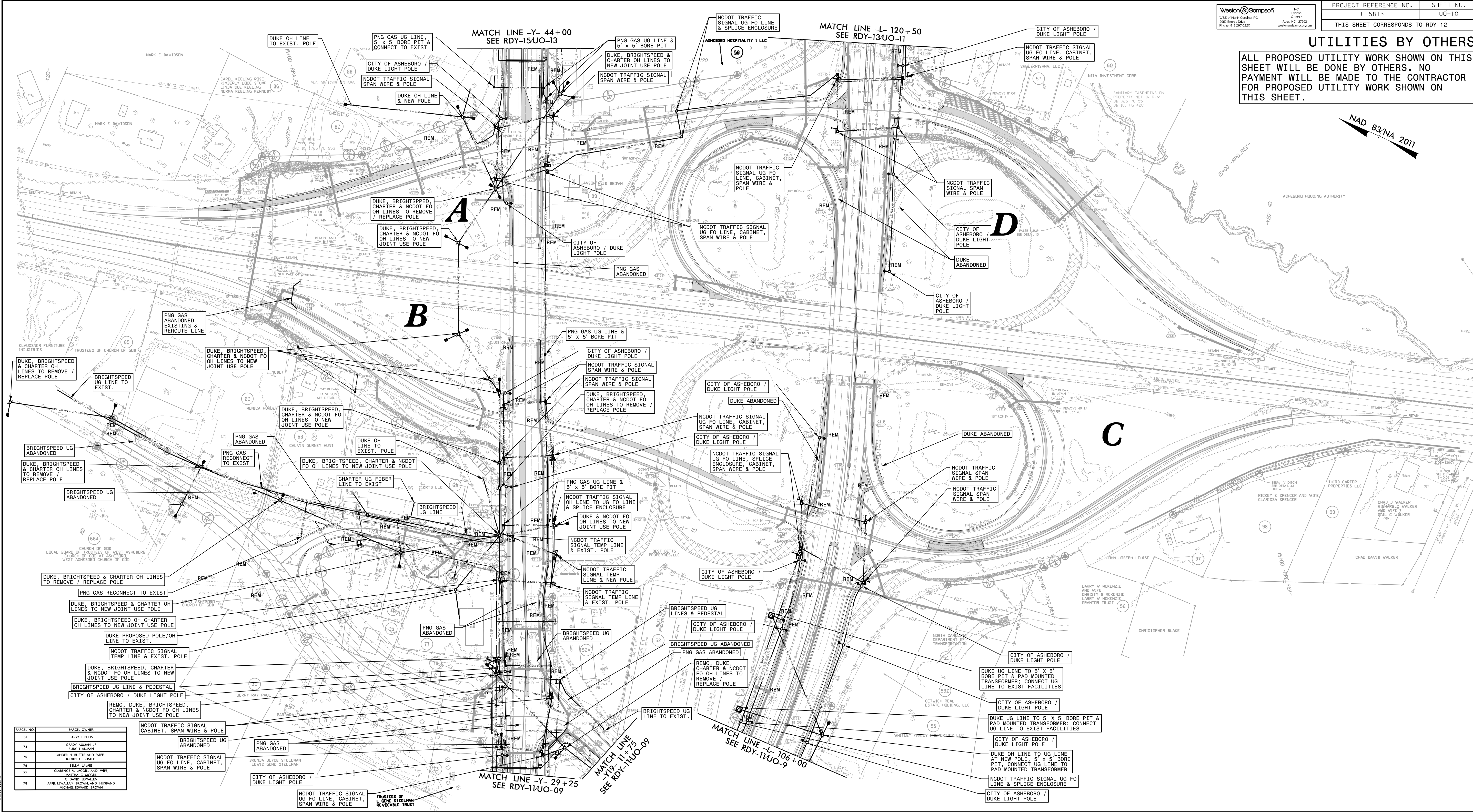
12/16/2023 10:25:17 AM U:\5813_Randi\ph\Utilities\Coordination\U5813_U-5813_UO-9_psh.dgn
 2/24/2023 8:47:49 AM

UTILITIES BY OTHERS
 ALL PROPOSED UTILITY WORK SHOWN ON THIS SHEET WILL BE DONE BY OTHERS. NO PAYMENT WILL BE MADE TO THE CONTRACTOR FOR PROPOSED UTILITY WORK SHOWN ON THIS SHEET.

NAD 83/NA 2011

5/14/19

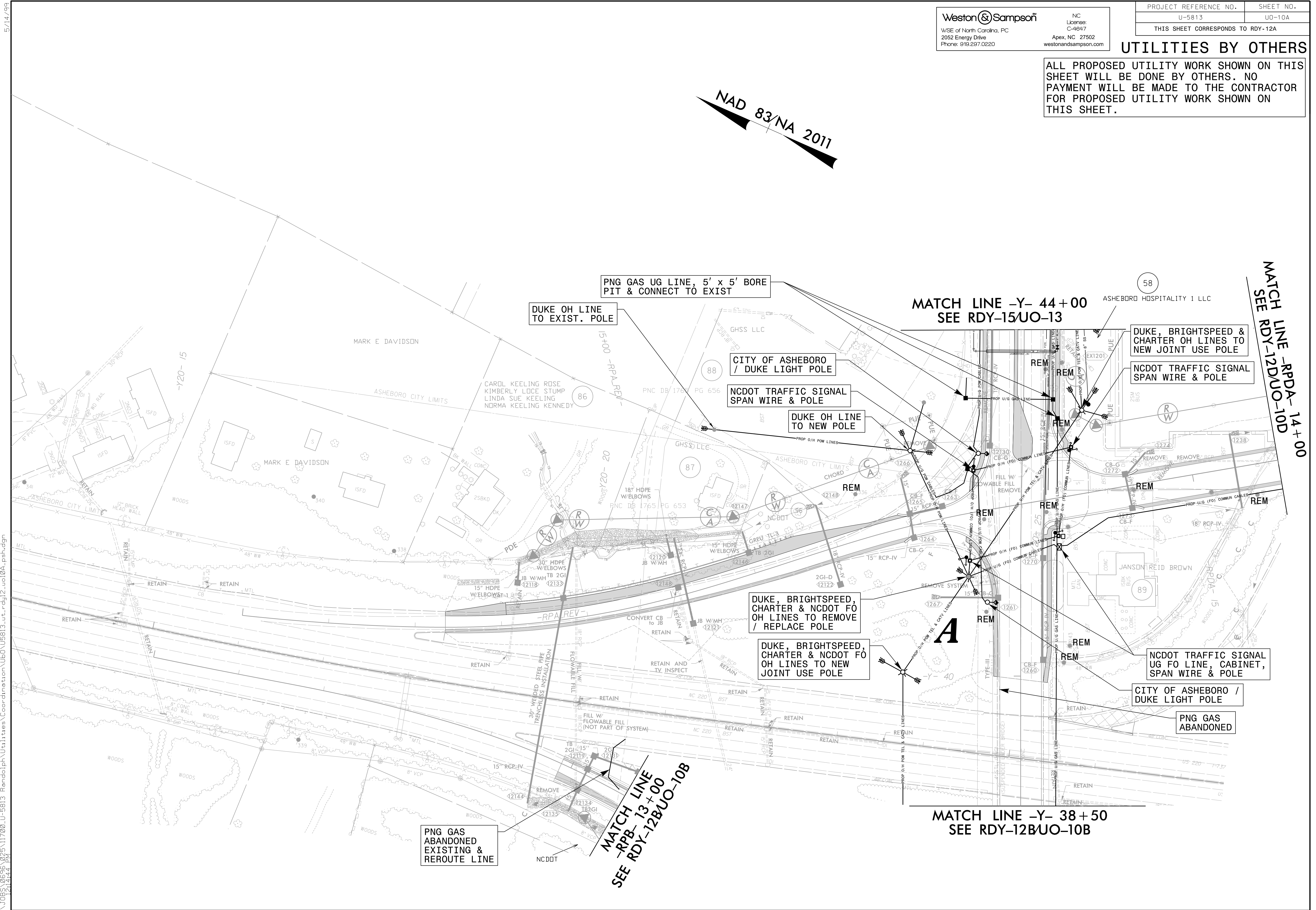
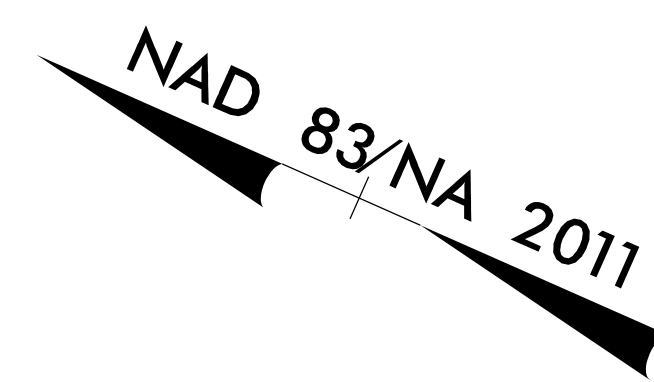
6:\025\1176\025813 Rmd\p\Utilities\Coordination\lbo\U5813.ut_rdy12_uo10_psh.dgn
 12:45:33 PM



PARCEL NO.	PARCEL OWNER
51	BARRY I BETTS
74	GANDY AUBURN JR ROBT E AUBURN
75	LANDER H BUTLER AND WIFE JAMES E BUTLER
76	REGIN JAMES
77	CLARENCE W JONES AND WIFE MARIE C JONES
78	DAVID TERHALEN ARIEL STEWART BROWN AND HUSBAND MICHAEL EDWARD BROWN

UTILITIES BY OTHERS

ALL PROPOSED UTILITY WORK SHOWN ON THIS SHEET WILL BE DONE BY OTHERS. NO PAYMENT WILL BE MADE TO THE CONTRACTOR FOR PROPOSED UTILITY WORK SHOWN ON THIS SHEET.



5/14/1999

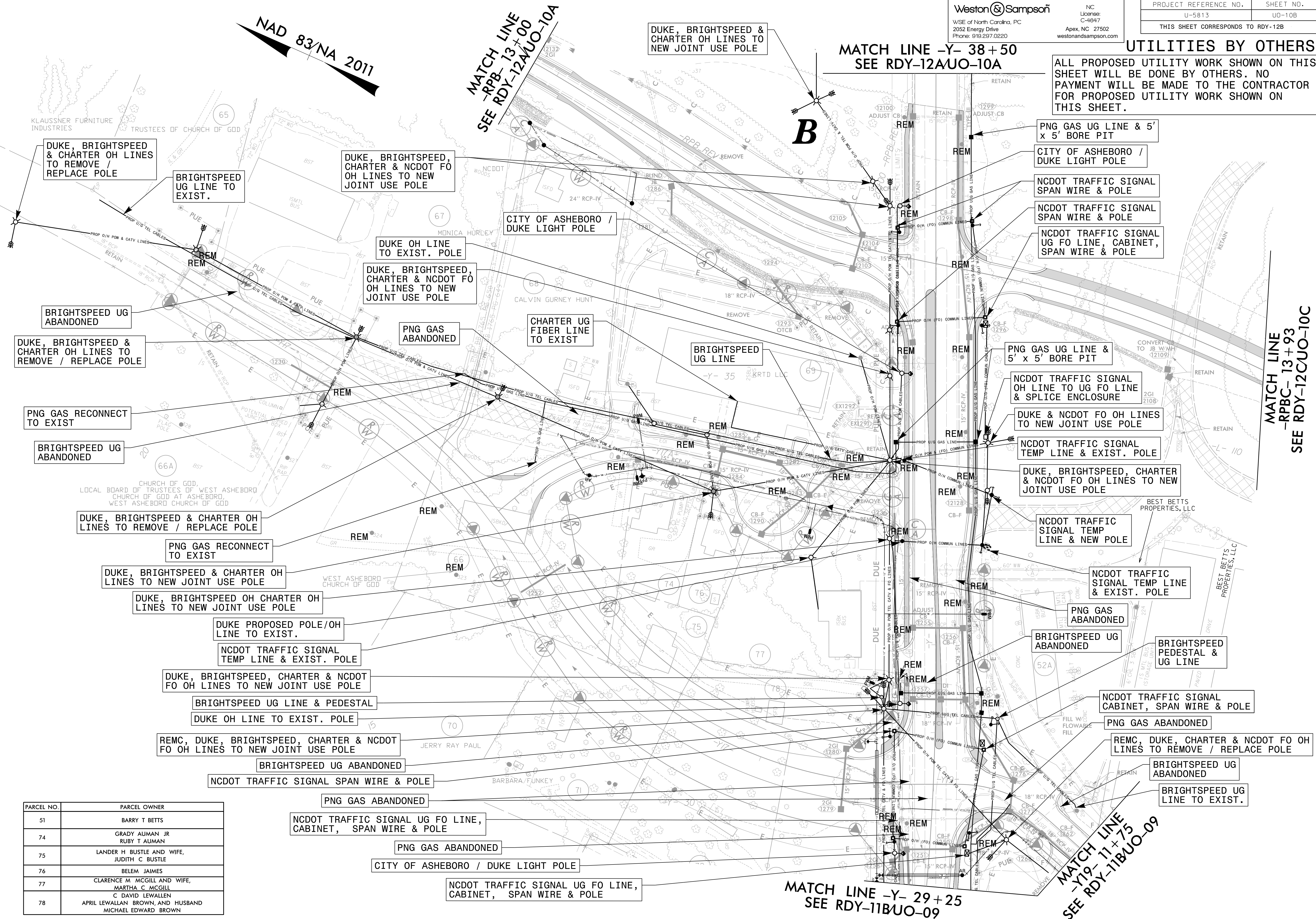
\\J085\24\2023\11700_U-5813_Rendolph\Utilities\Coordination\U0\U5813_ut_rdy12_uo10B_psh.dgn

Weston Sampson
NC License: C-4847
Apex, NC 27502
westonandsampson.com

PROJECT REFERENCE NO. U-5813
SHEET NO. UO-10B
THIS SHEET CORRESPONDS TO RDY-12B

UTILITIES BY OTHERS

ALL PROPOSED UTILITY WORK SHOWN ON THIS SHEET WILL BE DONE BY OTHERS. NO PAYMENT WILL BE MADE TO THE CONTRACTOR FOR PROPOSED UTILITY WORK SHOWN ON THIS SHEET.



PARCEL NO.	PARCEL OWNER
51	BARRY T BETTS
74	GRADY AUMAN JR RUBY T AUMAN
75	LANDER H BUSTLE AND WIFE, JUDITH C BUSTLE
76	BELEM JAIMES
77	CLARENCE M MCGILL AND WIFE, MARTHA C MCGILL
78	C DAVID LEWALLEN APRIL LEWALLEN BROWN, AND HUSBAND MICHAEL EDWARD BROWN

MATCH LINE -Y- 29+25
SEE RDY-11BUO-09

MATCH LINE -Y- 11+75
SEE RDY-11BUO-09

MATCH LINE -RPBC- 13+93
SEE RDY-12CUO-10C

5/14/2023

12/14/2023 10:09:06 AM 11700_U-5813_Remdelph\Utilities_Coordination\U0_U5813_ut_rdy12_uo10C_psh.dgn

Weston Sampson
WSE of North Carolina, PC
2052 Energy Drive
Phone: 919.297.0220

NC License: C-4947
Apex, NC 27502
westonandsampson.com

PROJECT REFERENCE NO.	SHEET NO.
U-5813	UD-10C
THIS SHEET CORRESPONDS TO RDY-12C	

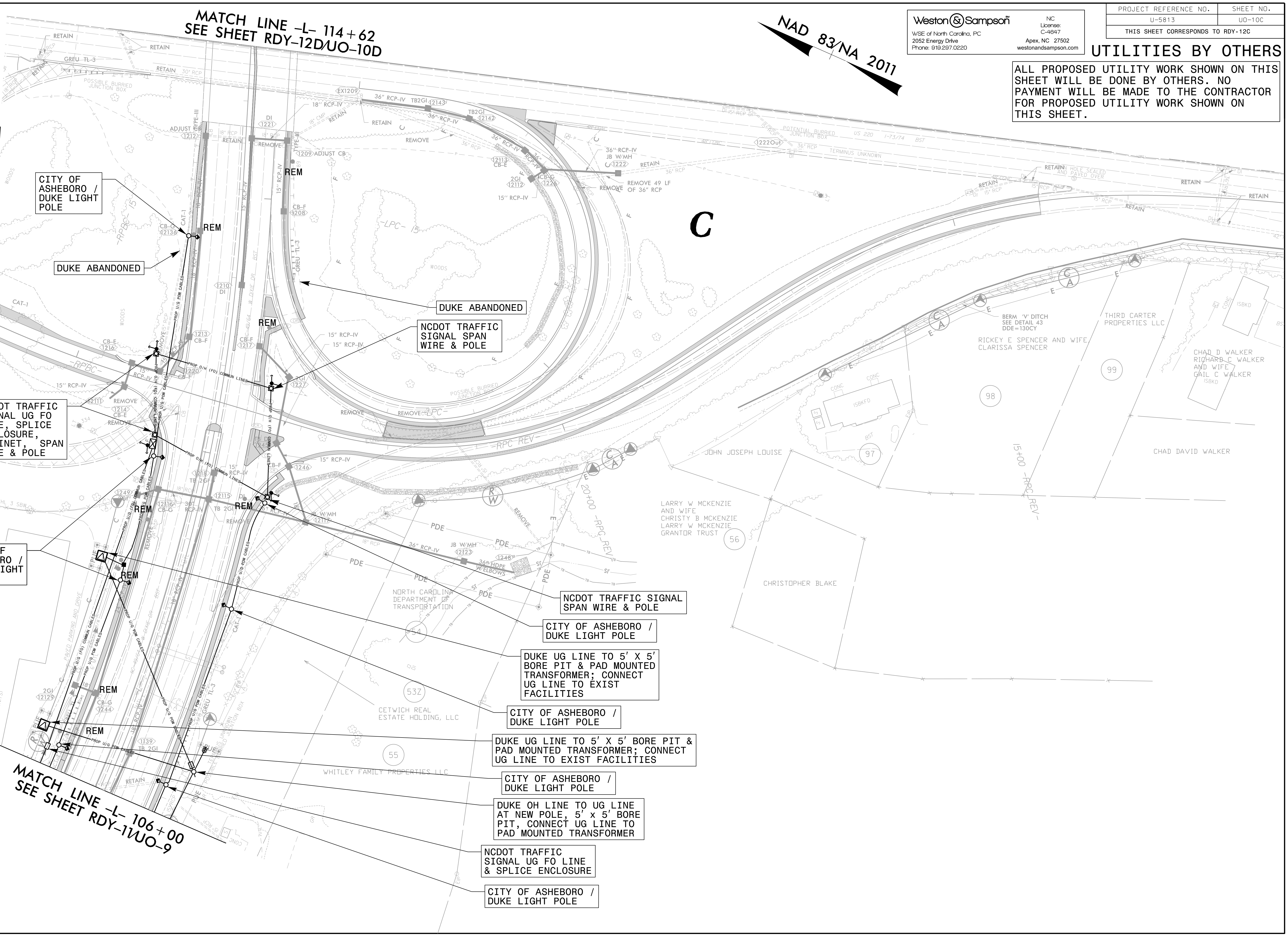
UTILITIES BY OTHERS

ALL PROPOSED UTILITY WORK SHOWN ON THIS SHEET WILL BE DONE BY OTHERS. NO PAYMENT WILL BE MADE TO THE CONTRACTOR FOR PROPOSED UTILITY WORK SHOWN ON THIS SHEET.

NAD 83/NA 2011

MATCH LINE -RPBC- 13+93
SEE SHEET RDY-12BUO-10B

MATCH LINE -L- 114+62
SEE SHEET RDY-12DUO-10D



NCDOT TRAFFIC SIGNAL UG FO LINE, SPLICE ENCLOSURE, CABINET, SPAN WIRE & POLE

CITY OF ASHEBORO / DUKE LIGHT POLE

CITY OF ASHEBORO / DUKE LIGHT POLE

DUKE ABANDONED

DUKE ABANDONED

NCDOT TRAFFIC SIGNAL SPAN WIRE & POLE

NCDOT TRAFFIC SIGNAL SPAN WIRE & POLE

CITY OF ASHEBORO / DUKE LIGHT POLE

DUKE UG LINE TO 5' X 5' BORE PIT & PAD MOUNTED TRANSFORMER; CONNECT UG LINE TO EXIST FACILITIES

CITY OF ASHEBORO / DUKE LIGHT POLE

DUKE UG LINE TO 5' X 5' BORE PIT & PAD MOUNTED TRANSFORMER; CONNECT UG LINE TO EXIST FACILITIES

CITY OF ASHEBORO / DUKE LIGHT POLE

DUKE OH LINE TO UG LINE AT NEW POLE, 5' x 5' BORE PIT, CONNECT UG LINE TO PAD MOUNTED TRANSFORMER

NCDOT TRAFFIC SIGNAL UG FO LINE & SPLICE ENCLOSURE

CITY OF ASHEBORO / DUKE LIGHT POLE

MATCH LINE -L- 106+00
SEE SHEET RDY-11UO-9

NAD 83/NA 2011

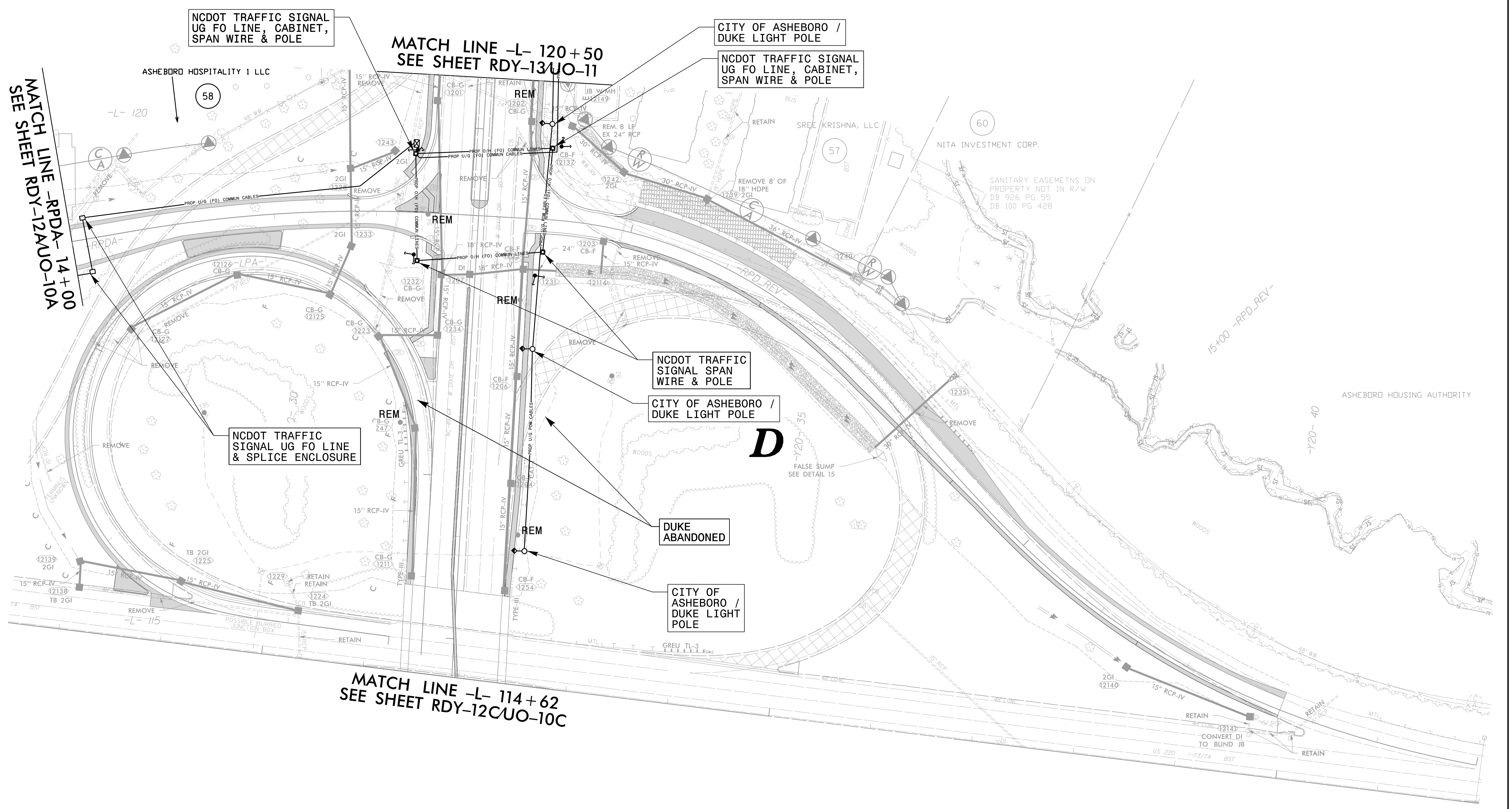
Weston & Sampson
 WSE of North Carolina, PC
 2052 Energy Drive
 Phone: 919.297.0220

NC License: C-4847
 Apex, NC 27502
 westonandsampson.com

PROJECT REFERENCE NO.	SHEET NO.
U-5813	UD-10D
THIS SHEET CORRESPONDS TO RDY-12D	

UTILITIES BY OTHERS

ALL PROPOSED UTILITY WORK SHOWN ON THIS SHEET WILL BE DONE BY OTHERS. NO PAYMENT WILL BE MADE TO THE CONTRACTOR FOR PROPOSED UTILITY WORK SHOWN ON THIS SHEET.



5/14/99

Weston & Sampson

WSE of North Carolina, PC
2052 Energy Drive
Phone: 919.297.0220

NC
License:
C-4847
Apex, NC 27502
westonandsampson.com

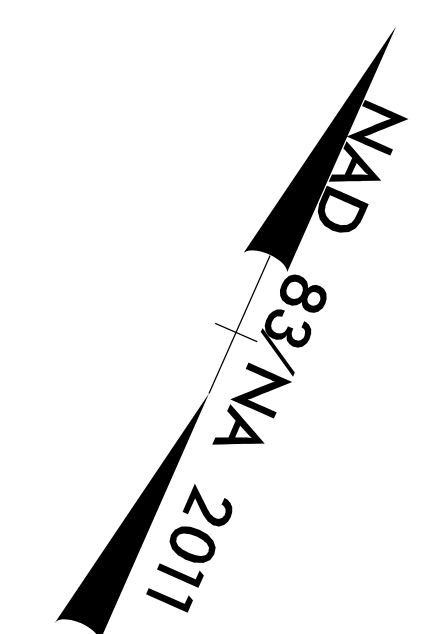
PROJECT REFERENCE NO. SHEET NO.

U-5813 UD-11

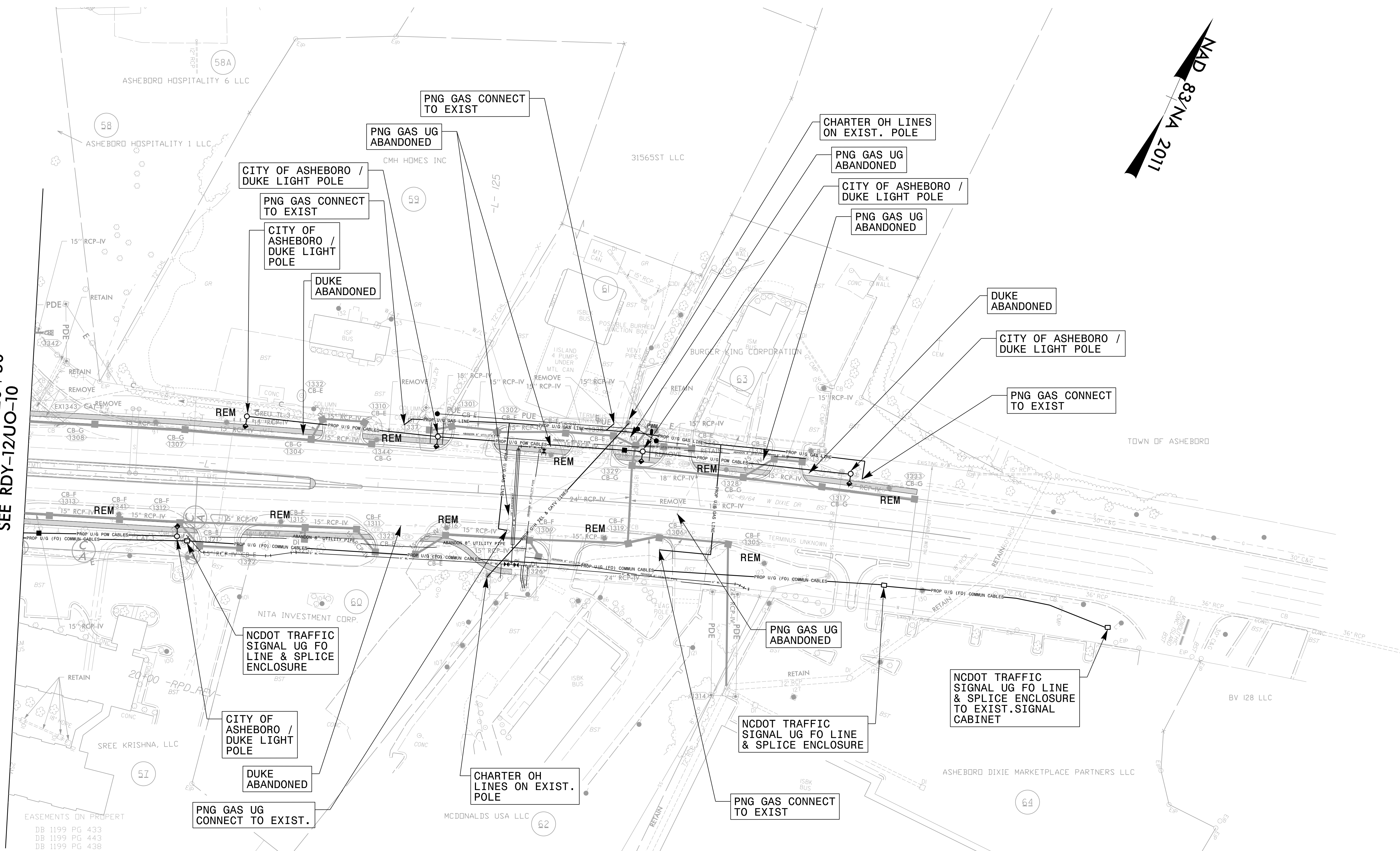
THIS SHEET CORRESPONDS TO RDY-13

UTILITIES BY OTHERS

ALL PROPOSED UTILITY WORK SHOWN ON THIS SHEET WILL BE DONE BY OTHERS. NO PAYMENT WILL BE MADE TO THE CONTRACTOR FOR PROPOSED UTILITY WORK SHOWN ON THIS SHEET.



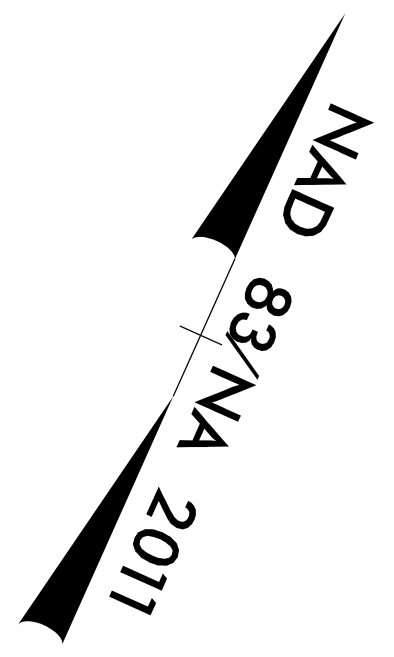
MATCH LINE -L- 120+50
SEE RDY-12UO-10



EASEMENTS ON PROPERTY
DB 1199 PG 433
DB 1199 PG 443
DB 1199 PG 438

12/1/2023
025\1700_U-5813_Rendolph\Utilities\Coordination\Ubd\U5813_ut_rdy13_uo11_psh.dgn
14:33:28 PM

5/14/99



Weston & Sampson
WSE of North Carolina, PC
2052 Energy Drive
Phone: 919.297.0220
Apex, NC 27502
westonandsampson.com

PROJECT REFERENCE NO.	SHEET NO.
U-5813	U0-12
THIS SHEET CORRESPONDS TO RDY-14	

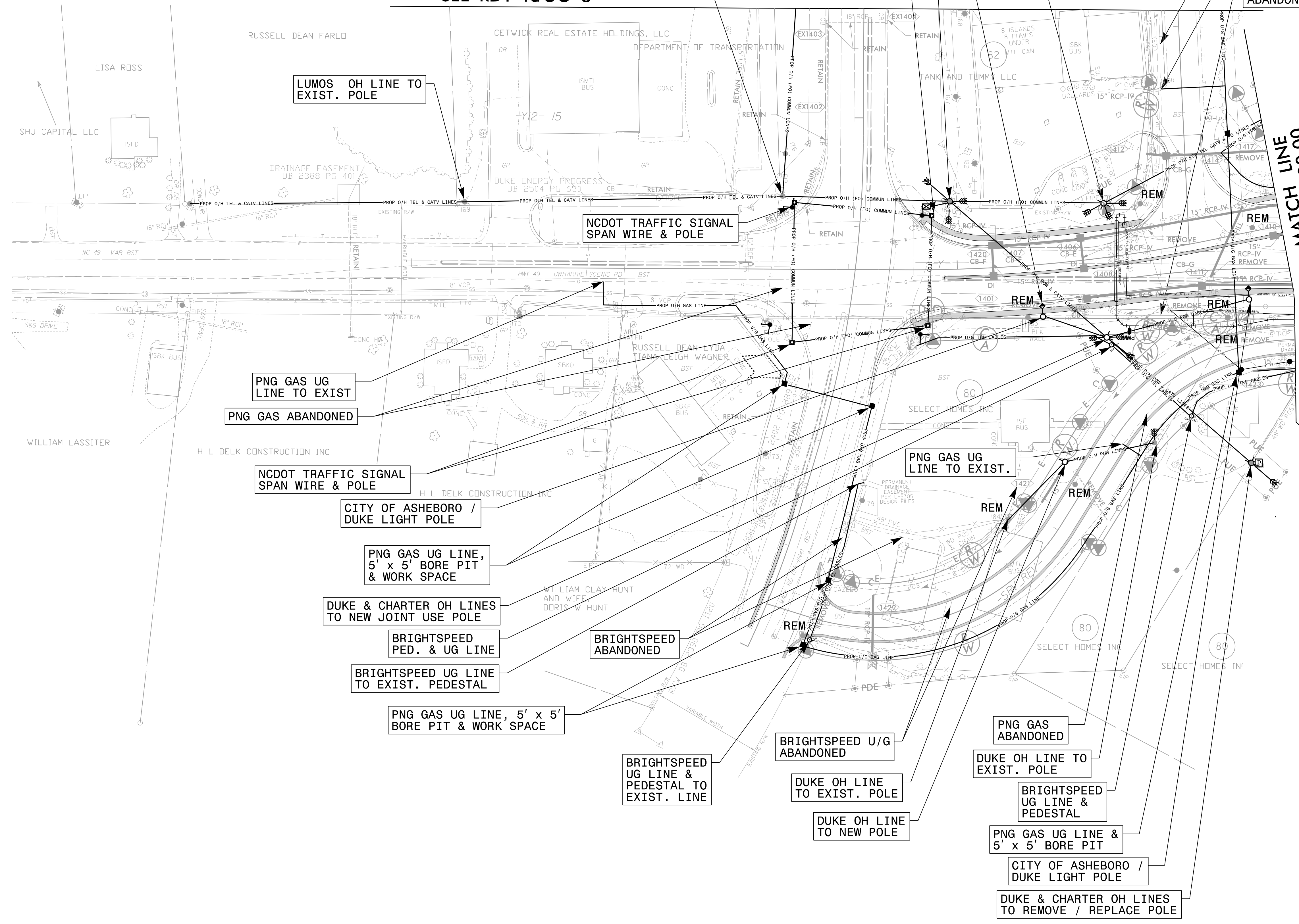
UTILITIES BY OTHERS

ALL PROPOSED UTILITY WORK SHOWN ON THIS SHEET WILL BE DONE BY OTHERS. NO PAYMENT WILL BE MADE TO THE CONTRACTOR FOR PROPOSED UTILITY WORK SHOWN ON THIS SHEET.

MATCH LINE -Y12- 16+00
SEE RDY-10UO-8

MATCH LINE
-Y- 18+00.00
SEE RDY-11UO-9

MATCH LINE
-SRV- 15+92
SEE RDY-11UO-09



LUMOS OH LINE TO EXIST. POLE

NCDOT TRAFFIC SIGNAL UG FO LINE TO EXIST. POLE; LUMOS OH LINE TO EXIST. POLE

REMC, DUKE, CHARTER & NCDOT FO OH LINES TO REMOVE / REPLACE POLE

DUKE UG LINE AND LIGHT POLE

REMC, DUKE, CHARTER & NCDOT FO OH LINES TO REMOVE / REPLACE POLE

NCDOT TRAFFIC SIGNAL UG FO LINE, CABINET, SPAN WIRE & POLE

PNG GAS ABANDONED

PNG GAS UG LINE & CONNECT TO EXIST

BRIGHTSPEED UG ABANDONED

LUMOS OH LINE TO EXIST. POLE

NCDOT TRAFFIC SIGNAL SPAN WIRE & POLE

PNG GAS UG LINE TO EXIST

PNG GAS ABANDONED

NCDOT TRAFFIC SIGNAL SPAN WIRE & POLE

CITY OF ASHEBORO / DUKE LIGHT POLE

PNG GAS UG LINE, 5' x 5' BORE PIT & WORK SPACE

DUKE & CHARTER OH LINES TO NEW JOINT USE POLE

BRIGHTSPEED PED. & UG LINE

BRIGHTSPEED UG LINE TO EXIST. PEDESTAL

PNG GAS UG LINE, 5' x 5' BORE PIT & WORK SPACE

BRIGHTSPEED UG LINE & PEDESTAL TO EXIST. LINE

BRIGHTSPEED U/G ABANDONED

DUKE OH LINE TO EXIST. POLE

DUKE OH LINE TO NEW POLE

PNG GAS ABANDONED

DUKE OH LINE TO EXIST. POLE

BRIGHTSPEED UG LINE & PEDESTAL

PNG GAS UG LINE & 5' x 5' BORE PIT

CITY OF ASHEBORO / DUKE LIGHT POLE

DUKE & CHARTER OH LINES TO REMOVE / REPLACE POLE

g:\gineer\10955\26367\2511700_U-5813_RandolphUtilities\Coordination\U0\U5813_ut_rdy14_u012_psh.dgn

5/14/99
12/1/2017
g:\g\065\06563\25\11700-U-5813-Randolph\Utilities\Coordination\U-5813-ut-rdy\15.uo\13_psh.dgn

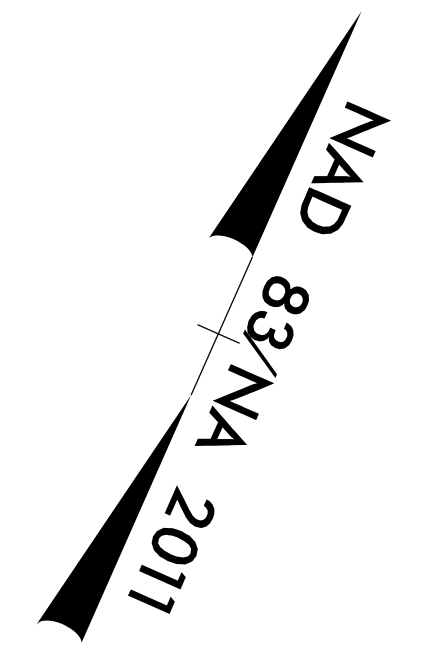
Weston Sampson
WSE of North Carolina, PC
2052 Energy Drive
Phone: 919.297.0220

NC
License:
C-4947
Apex, NC 27502
westonandsampson.com

PROJECT REFERENCE NO.	SHEET NO.
U-5813	UO-13
THIS SHEET CORRESPONDS TO RDY-15	

UTILITIES BY OTHERS

ALL PROPOSED UTILITY WORK SHOWN ON THIS SHEET WILL BE DONE BY OTHERS. NO PAYMENT WILL BE MADE TO THE CONTRACTOR FOR PROPOSED UTILITY WORK SHOWN ON THIS SHEET.



MATCH LINE -Y- 44+00
SEE RDY-12/UO-10

