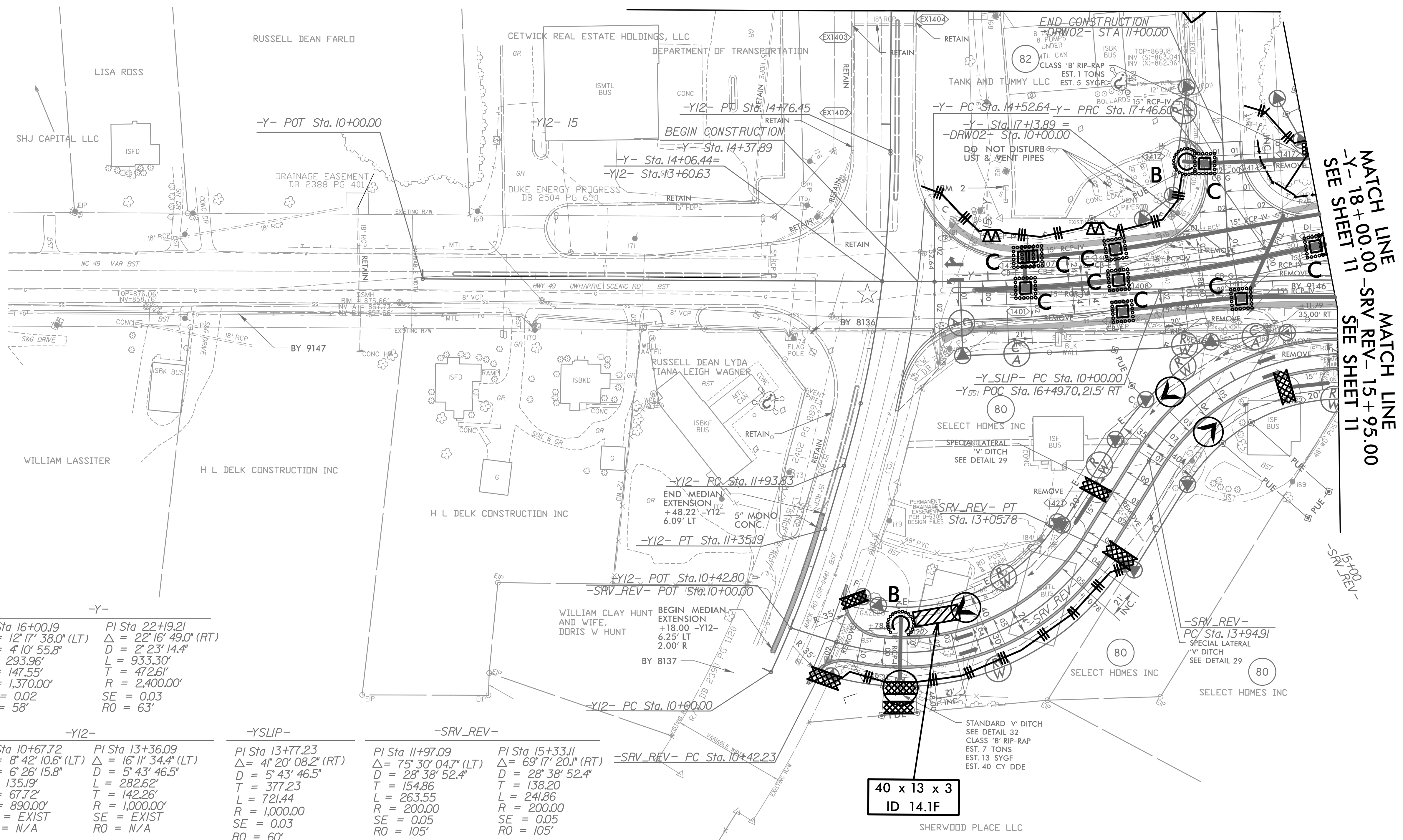


PROJECT REFERENCE NO.	SHEET NO.
U-5813	EC-27/CONST.14
R/W SHEET NO.	
ROADWAY DESIGN ENGINEER	HYDRAULICS ENGINEER

NOTE:
UTILIZE FABRIC INSERT INLET PROTECTION DEVICE IN LIEU OF
ROCK INLET SEDIMENT TRAP, TYPE-C AS DIRECTED TO AVOID
IMPOUNDMENT OF RUNOFF IN ROADWAY OPEN TO TRAFFIC.

NAD 83/NA 2011

MATCH LINE -Y12- 16+00
SEE SHEET 10



-Y-

PI Sta 16+00.19	PI Sta 22+19.21
$\Delta = 12' 17" 38.0" (LT)$	$\Delta = 22' 16" 49.0" (RT)$
$D = 4' 10" 55.8"$	$D = 2' 23" 14.4"$
$L = 293.96'$	$L = 933.30'$
$T = 147.55'$	$T = 472.61'$
$R = 1,370.00'$	$R = 2,400.00'$
$SE = 0.02$	$SE = 0.03$
$RO = 58'$	$RO = 63'$

-Y12-

PI Sta 10+67.72	PI Sta 13+36.09
$\Delta = 8' 42" 10.6" (LT)$	$\Delta = 16' 11" 34.4" (LT)$
$D = 6' 26" 15.8"$	$D = 5' 43" 46.5"$
$L = 135.19'$	$L = 282.62'$
$T = 67.72'$	$T = 142.26'$
$R = 890.00'$	$R = 1,000.00'$
$SE = EXIST$	$SE = EXIST$
$RO = N/A$	$RO = N/A$

-YSLIP-

PI Sta 13+77.23
$\Delta = 4' 20" 08.2" (RT)$
$D = 5' 43" 46.5"$
$L = 721.44'$
$T = 377.23'$
$R = 1,000.00'$
$SE = 0.03$
$RO = 60'$

-SRV_REV-

PI Sta 11+97.09	PI Sta 15+33.11
$\Delta = 75' 30" 04.7" (LT)$	$\Delta = 69' 17" 20.1" (RT)$
$D = 28' 38" 52.4"$	$D = 28' 38" 52.4"$
$L = 263.55'$	$L = 241.86'$
$T = 154.86'$	$T = 138.20'$
$R = 200.00'$	$R = 200.00'$
$SE = 0.05$	$SE = 0.05$
$RO = 105'$	$RO = 105'$

-SRV_REV- PC Sta. 10+42.23

PI Sta 10+42.23
$\Delta = 18.00' -Y12-$
$D = 6.25' LT$
$T = 2.00' R$

40 x 13 x 3
ID 14.1F

SHERWOOD PLACE LLC

MATCH LINE -Y- 18+00.00 -SRV_REV- 15+95.00
SEE SHEET 11
MATCH LINE
SEE SHEET 11

