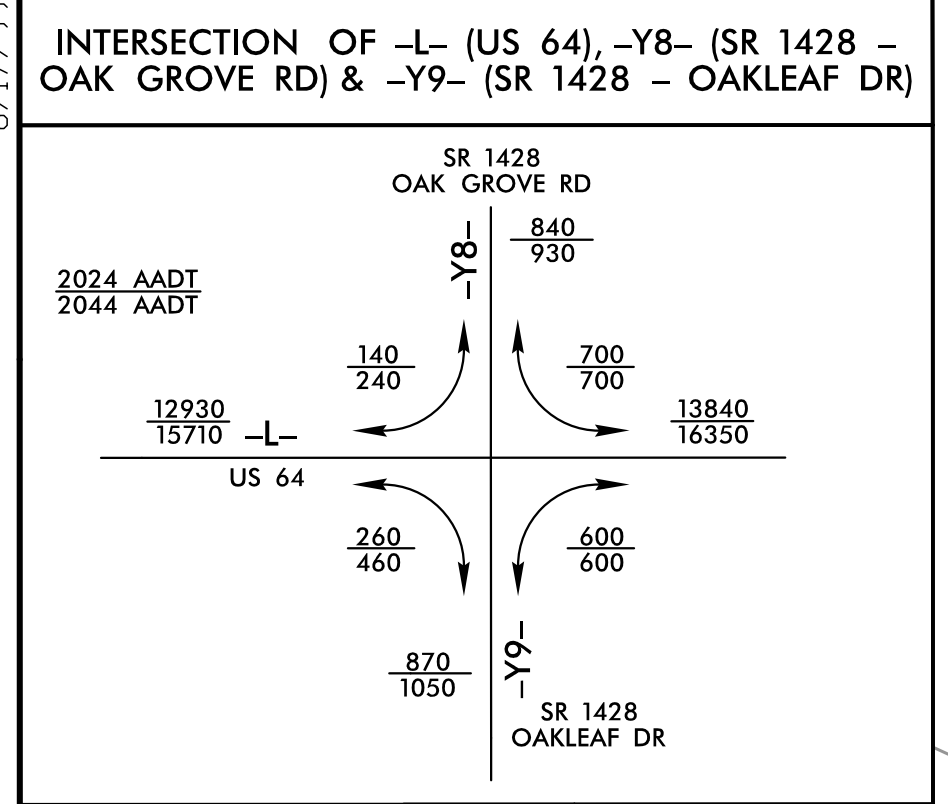


8.17.19

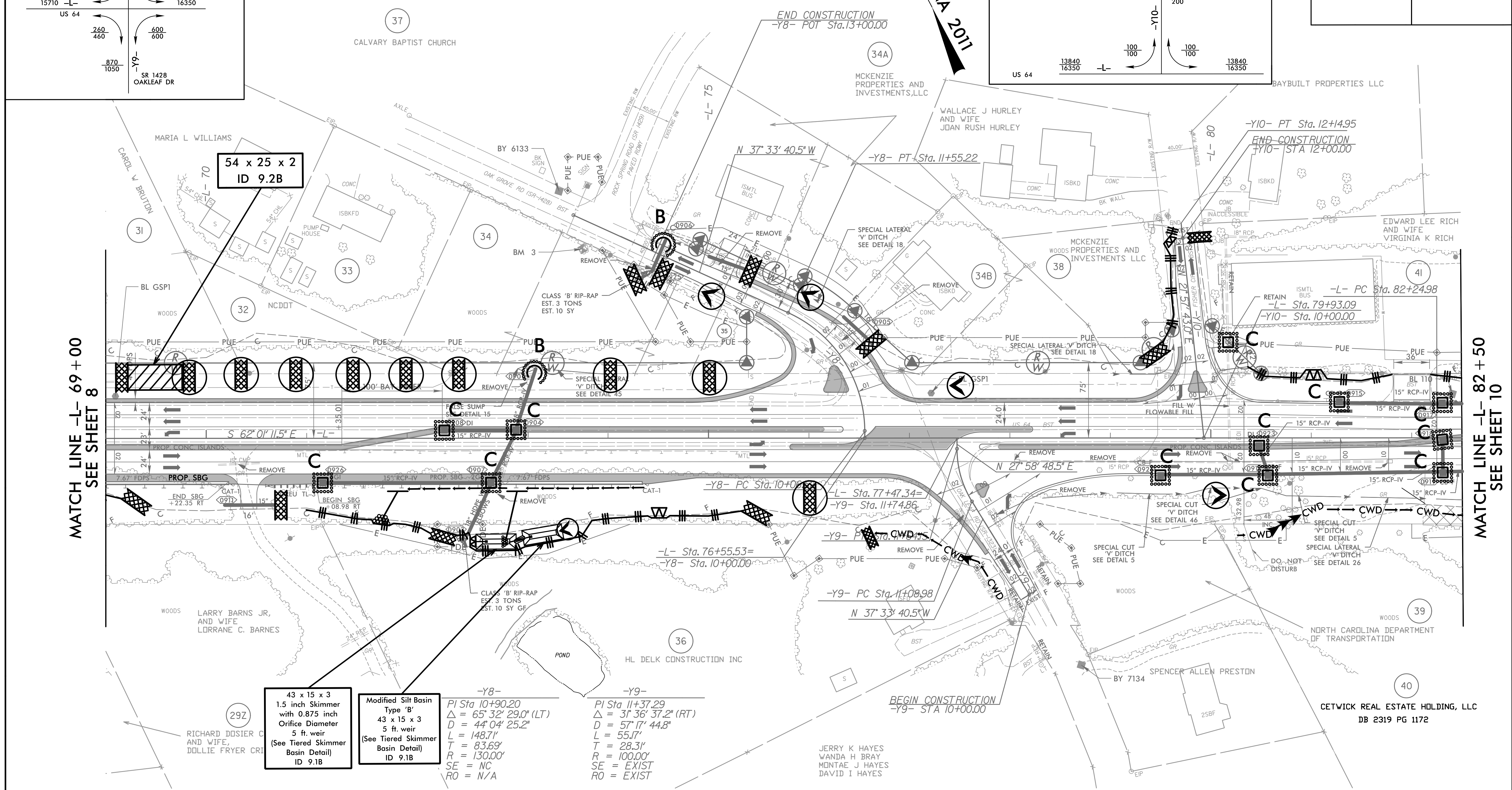
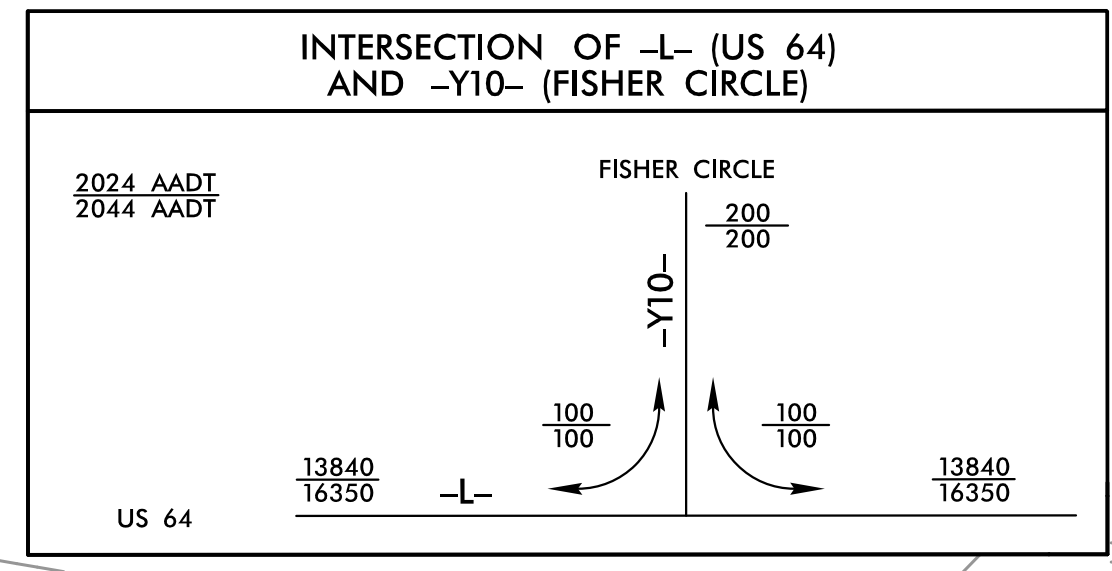


PARCEL NO.	PARCEL OWNER	DEED BOOK/PAGE
33	THE JESSE TATE LEONARD FAMILY TRUST TRUSTEES PHYLIS LEONARD MARTENS JESSE TATE LEONARD	
34/34B	MCKENZIE PROPERTIES AND INVESTMENTS, LLC	
35	ANDREW MARK SCHWARZ	

NOTE: UTILIZE FABRIC INSERT INLET PROTECTION DEVICE IN LIEU OF ROCK INLET SEDIMENT TRAP, TYPE-C, AS DIRECTED TO AVOID IMPOUNDMENT OF RUNOFF IN ROADWAY OPEN TO TRAFFIC.

HNTB HNTB NORTH CAROLINA, P.C.
343 E. Six Forks Road, Suite 200
Raleigh, North Carolina 27609
NC License No: C-1554

PROJECT REFERENCE NO.	SHEET NO.
U-5813	EC-22/CONST.9
RW SHEET NO.	
ROADWAY DESIGN ENGINEER	HYDRAULICS ENGINEER



MATCH LINE -L- 69+00
SEE SHEET 8

MATCH LINE -L- 82+50
SEE SHEET 10

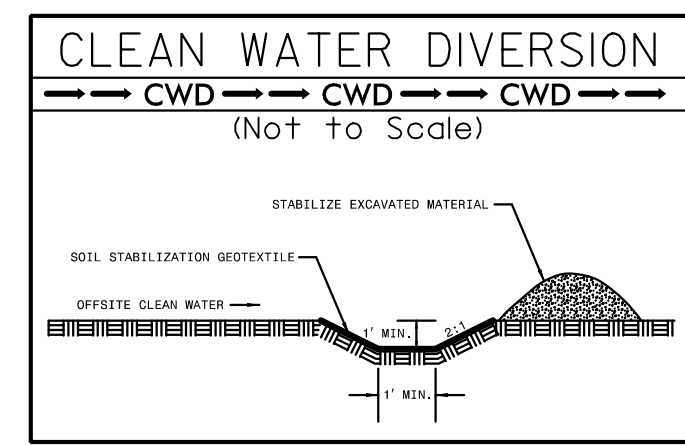
43 x 15 x 3
1.5 inch Skimmer
with 0.875 inch
Orifice Diameter
5 ft. weir
(See Tiered Skimmer
Basin Detail)
ID 9.1B

Modified Silt Basin
Type 'B'
43 x 15 x 3
5 ft. weir
(See Tiered Skimmer
Basin Detail)
ID 9.1B

-Y8-
PI Sta 10+90.20
 $\Delta = 65' 32" 29.0" (LT)$
 $D = 44' 04" 25.2"$
 $L = 148.71'$
 $T = 83.69'$
 $R = 130.00'$
SE = NC
RO = N/A

-Y9-
PI Sta 11+37.29
 $\Delta = 31' 36" 37.2" (RT)$
 $D = 57' 17" 44.8"$
 $L = 55.17'$
 $T = 28.31'$
 $R = 100.00'$
SE = EXIST
RO = EXIST

Place Matting for Erosion Control
on Slope as Work Allows.
-L- Sta. 71+50 to Sta. 74+50 RT
-L- Sta. 79+50 to Sta. 80+50 RT
-L- Sta. 69+00 to Sta. 73+00 LT
-Y9- Sta. 11+00 to Sta. 11+25 LT



FOR -L-, -Y8-, -Y9-, & -Y10-
DIMENSIONS, SEE SHEET 2B-2
FOR -L- PROFILE, SEE SHEET 18
FOR -Y8- PROFILE, SEE SHEET 24
FOR -Y9-, -Y10- PROFILES, SEE SHEET 25

10.17.2023 Ec.PSH9.dgn
HNTB