

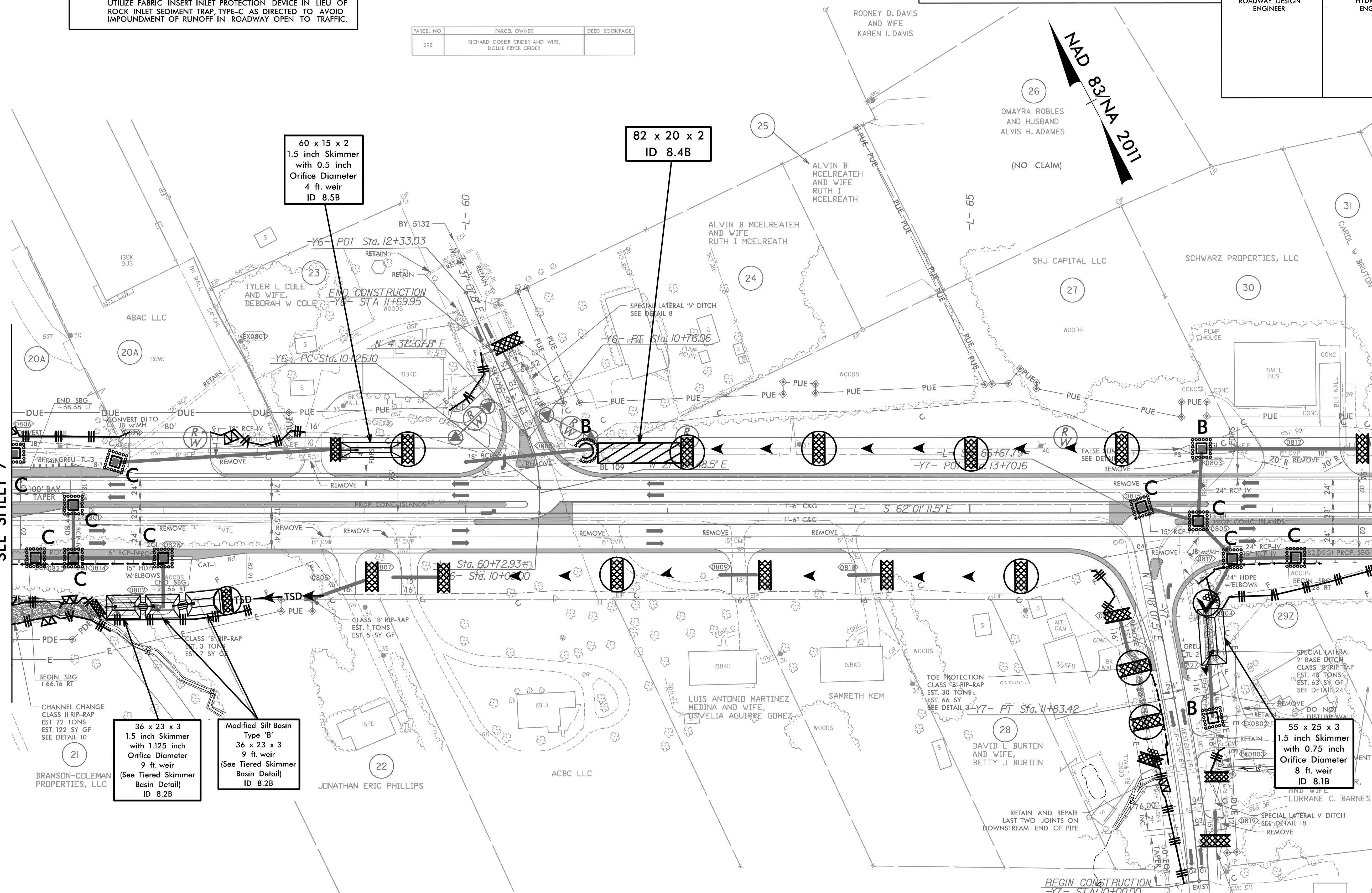
PROJECT REFERENCE NO.	SHEET NO.
U-5813	EC-21/CONST.8
RAW SHEET NO.	
ROADWAY DESIGN ENGINEER	HYDRAULICS ENGINEER

NOTE: UTILIZE FABRIC INSERT INLET PROTECTION DEVICE IN LIEU OF ROCK INLET SEDIMENT TRAP, TYPE-C AS DIRECTED TO AVOID IMPOUNDMENT OF RUNOFF IN ROADWAY OPEN TO TRAFFIC.

PARCEL NO.	PARCEL OWNER	DEED BOOK/PAGE
292	RICHARD DOSIER CRIDER AND WIFE, DOLLIE FRYER CRIDER	

MATCH LINE -L- 55+50  
SEE SHEET 7

MATCH LINE -L- 69+00  
SEE SHEET 9



-Y6-	-Y7-
PI Sta 10+50.94	PI Sta 10+91.79
$\Delta = 23^{\circ} 21' 40.7''$ (LT)	$\Delta = 5^{\circ} 50' 18.0''$ (LT)
$D = 45^{\circ} 50' 11.8''$	$D = 3^{\circ} 10' 59.2''$
$L = 50.97'$	$L = 183.42'$
$T = 25.84'$	$T = 91.79'$
$R = 125.00'$	$R = 1,800'$
$SE = 0.05$	$SE = 0.04$
$RO = 105'$	$RO = 84'$

Place Matting for Erosion Control on Slope as Work Allows.  
 -L- Sta. 55+50 to Sta. 57+00 RT  
 -L- Sta. 67+25 to Sta. 69+00 RT  
 -L- Sta. 61+50 to Sta. 69+00 LT  
 -Y7- Sta. 12+00 to Sta. 13+00 RT