

8/17/99

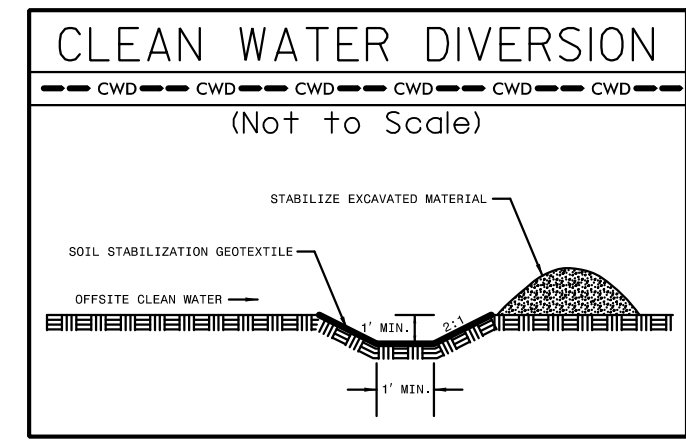
NOTE:
UTILIZE FABRIC INSERT INLET PROTECTION DEVICE IN LIEU OF
ROCK INLET SEDIMENT TRAP, TYPE-C AS DIRECTED TO AVOID
IMPOUNDMENT OF RUNOFF IN ROADWAY OPEN TO TRAFFIC.

HNTB HNTB NORTH CAROLINA, P.C.
343 E. Six Forks Road, Suite 200
Raleigh, North Carolina 27609
NC License No: C-1554

PROJECT REFERENCE NO.	SHEET NO.
U-5813	EC-20/CONST.7
RW SHEET NO.	
ROADWAY DESIGN ENGINEER	HYDRAULICS ENGINEER

MATCH LINE -L- 43 + 50
SEE SHEET 6

MATCH LINE -L- 55 + 50
SEE SHEET 8



Modified Silt Basin
Type 'B'
41 x 18 x 3
6 ft. weir
(See Tiered Skimmer
Basin Detail)
ID 7.3F

41 x 18 x 3
1.5 inch Skimmer
with 0.875 inch
Orifice Diameter
6 ft. weir
(See Tiered Skimmer
Basin Detail)
ID 7.3F

73 x 25 x 2
1.5 inch Skimmer
with 1.25 inch
Orifice Diameter
7 ft. weir
ID 7.4B

30 x 15 x 3
1.5 inch Skimmer
with 0.5 inch
Orifice Diameter
4 ft. weir
ID 7.5B

55 x 15 x 2
1.5 inch Skimmer
with 0.5 inch
Orifice Diameter
4 ft. weir
ID 7.8B

40 x 13 x 2
1.5 inch Skimmer
with 0.5 inch
Orifice Diameter
4 ft. weir
ID 7.6B

Modified Silt Basin
Type 'B'
20 x 18 x 3
4 ft. weir
(See Tiered Skimmer
Basin Detail)
ID 7.7F

20 x 18 x 3
1.5 inch Skimmer
with 0.625 inch
Orifice Diameter
4 ft. weir
(See Tiered Skimmer
Basin Detail)
ID 7.7F

-L-
PI Sta 44+39.62
 $\Delta = 2^{\circ} 20' 44.5''$ (RT)
D = 0' 29' 53.6"
L = 397.00'
T = 235.44'
SE = NC
RO = N/A

PI Sta 48+89.54
 $\Delta = 25^{\circ} 27' 53.2''$ (R)
D = 25' 27' 53.2"
L = 136.83'
T = 70.60'
SE = 225.00'
RO = 84'

Place Matting for Erosion Control
on Slope as Work Allows.

- L- Sta. 47+00 to Sta. 48+00 RT
- L- Sta. 50+50 to Sta. 51+00 RT
- L- Sta. 53+50 to Sta. 55+50 RT
- L- Sta. 53+50 to Sta. 54+50 LT
- Y4_REV- Sta. 12+50 to Sta. 13+25 LT
- Y5- Sta. 12+75 to Sta. 13+25 RT
- Y5- Sta. 10+80 to Sta. 12+00 LT

10/10/2023 EC_PSH7.dgn