

PROJECT REFERENCE NO.	SHEET NO.
U-5813	EC-19/CONST.6
RW SHEET NO.	
ROADWAY DESIGN ENGINEER	HYDRAULICS ENGINEER

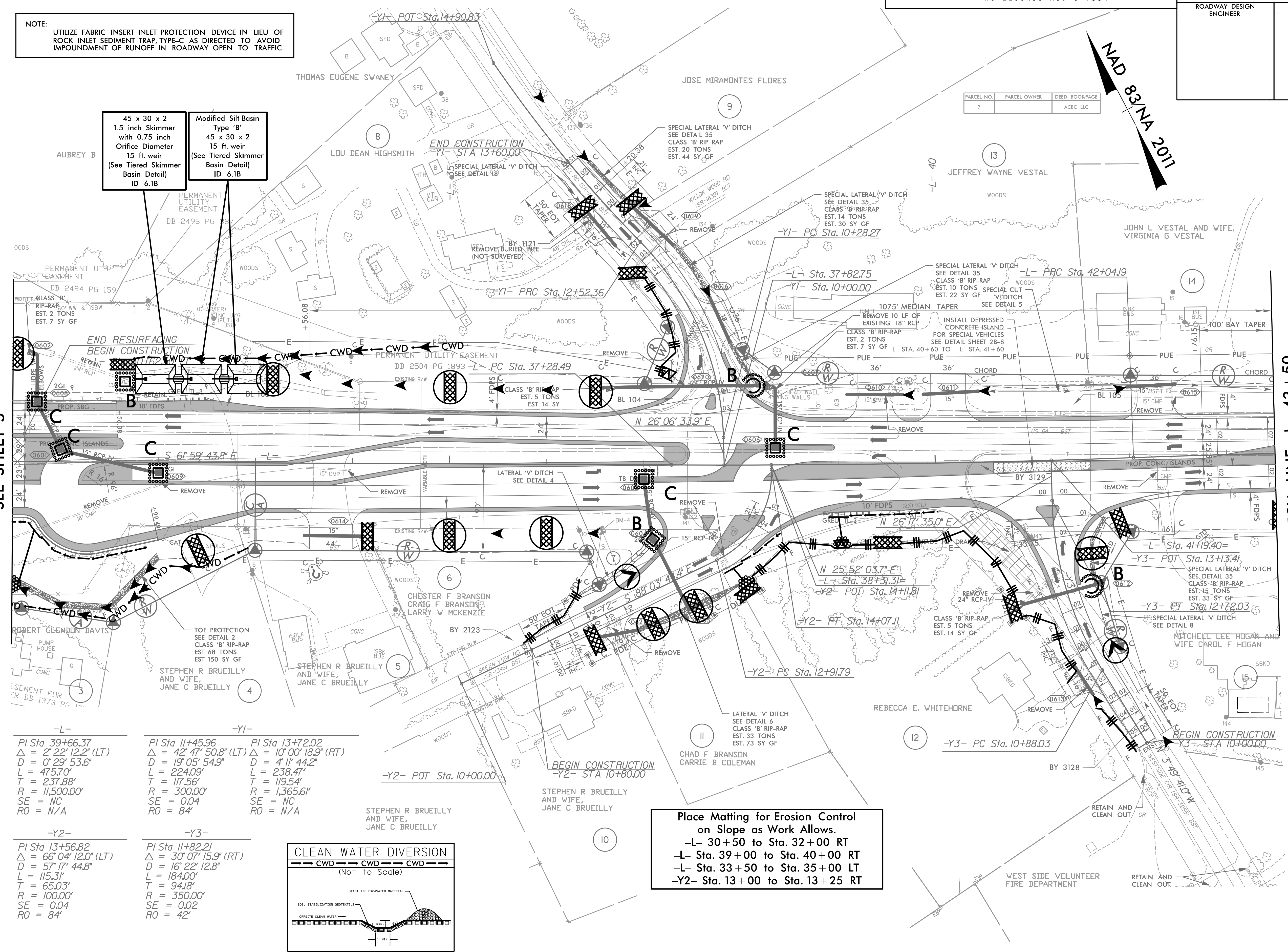
NOTE: UTILIZE FABRIC INSERT INLET PROTECTION DEVICE IN LIEU OF ROCK INLET SEDIMENT TRAP, TYPE-C AS DIRECTED TO AVOID IMPOUNDMENT OF RUNOFF IN ROADWAY OPEN TO TRAFFIC.

45 x 30 x 2  
 1.5 inch Skimmer  
 with 0.75 inch  
 Orifice Diameter  
 15 ft. weir  
 (See Tiered Skimmer  
 Basin Detail)  
 ID 6.1B

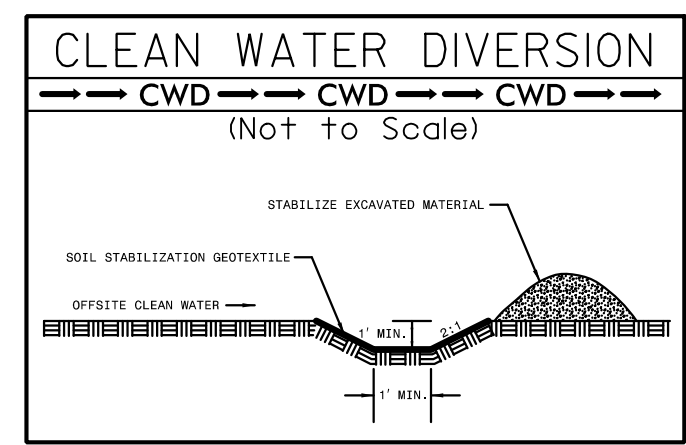
Modified Silt Basin  
 Type 'B'  
 45 x 30 x 2  
 15 ft. weir  
 (See Tiered Skimmer  
 Basin Detail)  
 ID 6.1B

MATCH LINE -L- 30+50  
 SEE SHEET 5

MATCH LINE -L- 43+50  
 SEE SHEET 7



-L-	-Y1-	-Y1-
PI Sta 39+66.37	PI Sta 11+45.96	PI Sta 13+72.02
$\Delta = 2' 22'' 12.2''$ (LT)	$\Delta = 42' 47'' 50.8''$ (LT)	$\Delta = 10' 00'' 18.9''$ (RT)
D = 0' 29' 53.6"	D = 19' 05' 54.9"	D = 4' 11' 44.2"
L = 475.70'	L = 224.09'	L = 238.47'
T = 237.88'	T = 117.56'	T = 119.54'
R = 11,500.00'	R = 300.00'	R = 1,365.61'
SE = NC	SE = 0.04	SE = NC
RO = N/A	RO = 84'	RO = N/A
-Y2-	-Y3-	
PI Sta 13+56.82	PI Sta 11+82.21	
$\Delta = 66' 04'' 12.0''$ (LT)	$\Delta = 30' 07'' 15.9''$ (RT)	
D = 57' 17' 44.8"	D = 16' 22' 12.8"	
L = 115.31'	L = 184.00'	
T = 65.03'	L = 94.18'	
R = 100.00'	R = 350.00'	
SE = 0.04	SE = 0.02	
RO = 84'	RO = 42'	



Place Matting for Erosion Control  
 on Slope as Work Allows.  
 -L- 30+50 to Sta. 32+00 RT  
 -L- Sta. 39+00 to Sta. 40+00 RT  
 -L- Sta. 33+50 to Sta. 35+00 LT  
 -Y2- Sta. 13+00 to Sta. 13+25 RT

NAD 83/NA 2011

PARCEL NO.	PARCEL OWNER	DEED BOOK/PAGE
7		ACBC LLC

8/17/99 10/19/2023 EC\_PSH6.dgn HNTB