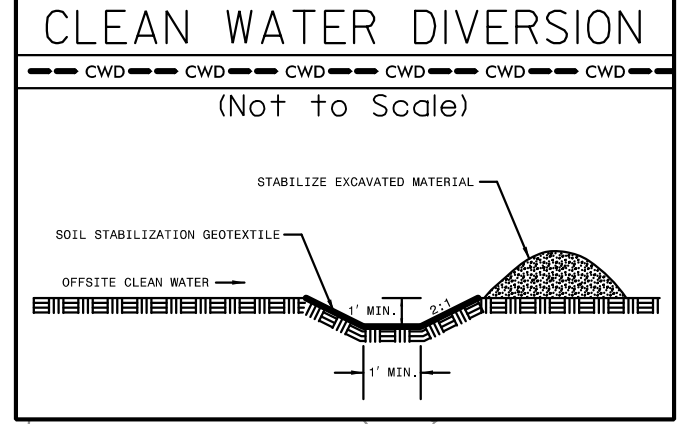


NOTE: UTILIZE FABRIC INSERT INLET PROTECTION DEVICE IN LIEU OF ROCK INLET SEDIMENT TRAP, TYPE-C AS DIRECTED TO AVOID IMPOUNDMENT OF RUNOFF IN ROADWAY OPEN TO TRAFFIC.

Place Matting for Erosion Control on Slope as Work Allows. -L- Sta. 25+50 RT to Sta. 30+50 RT



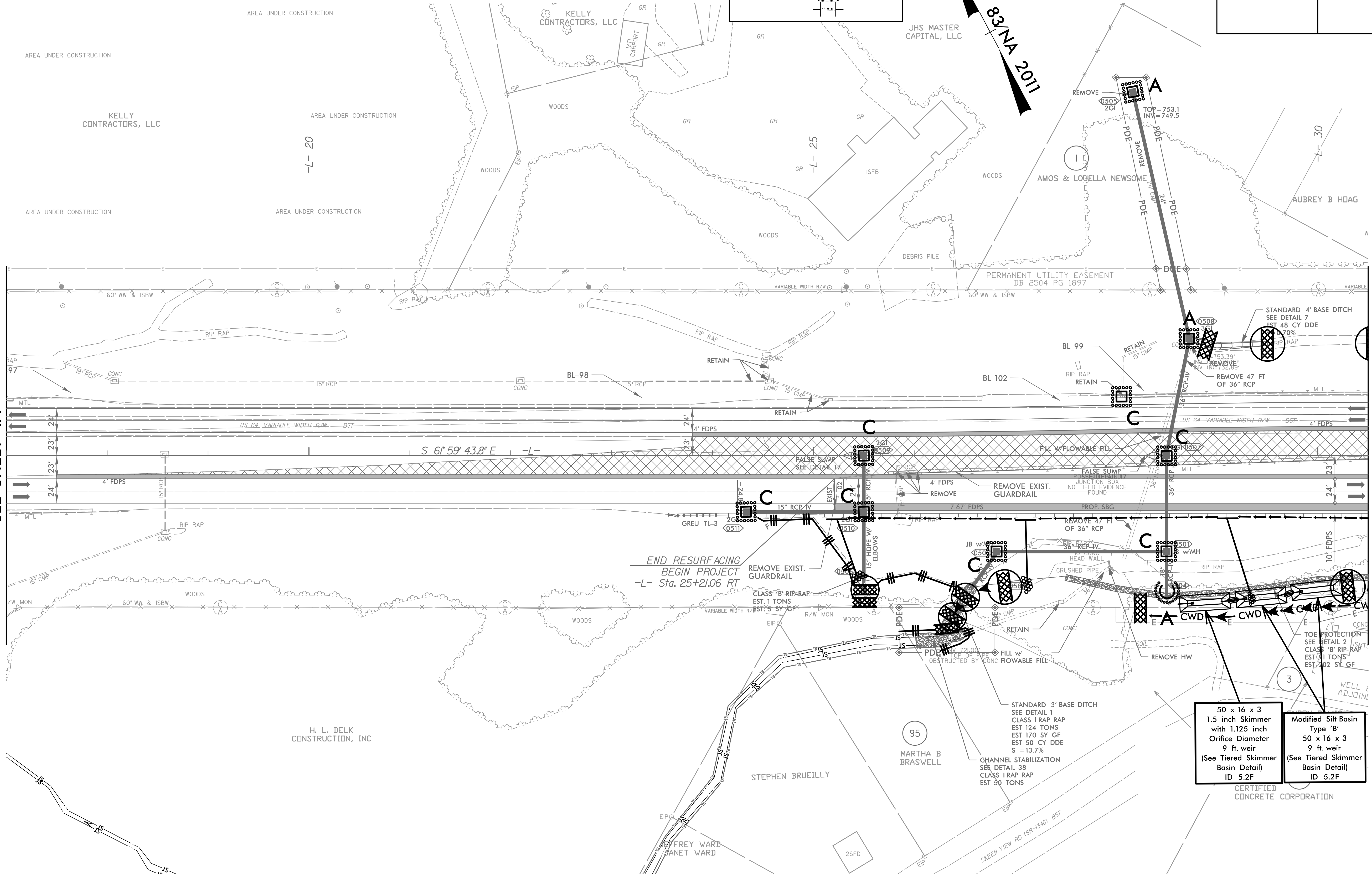
**HNTB** HNTB NORTH CAROLINA, P.C. 243 E. Six Forks Road, Suite 200 Raleigh, North Carolina 27609 NC License No: C-1554

PROJECT REFERENCE NO.	SHEET NO.
U-5813	EC-18/CONST.5
RW SHEET NO.	
ROADWAY DESIGN ENGINEER	HYDRAULICS ENGINEER

NAD 83/NA 2011

MATCH LINE -L- 17+00 SEE SHEET 4A

MATCH LINE -L- 30+50 SEE SHEET 6



50 x 16 x 3  
1.5 inch Skimmer  
with 1.125 inch  
Orifice Diameter  
9 ft. weir  
(See Tiered Skimmer  
Basin Detail)  
ID 5.2F

Modified Silt Basin  
Type 'B'  
50 x 16 x 3  
9 ft. weir  
(See Tiered Skimmer  
Basin Detail)  
ID 5.2F

CERTIFIED  
CONCRETE CORPORATION

FOR -L- PROFILE, SEE SHEET 16