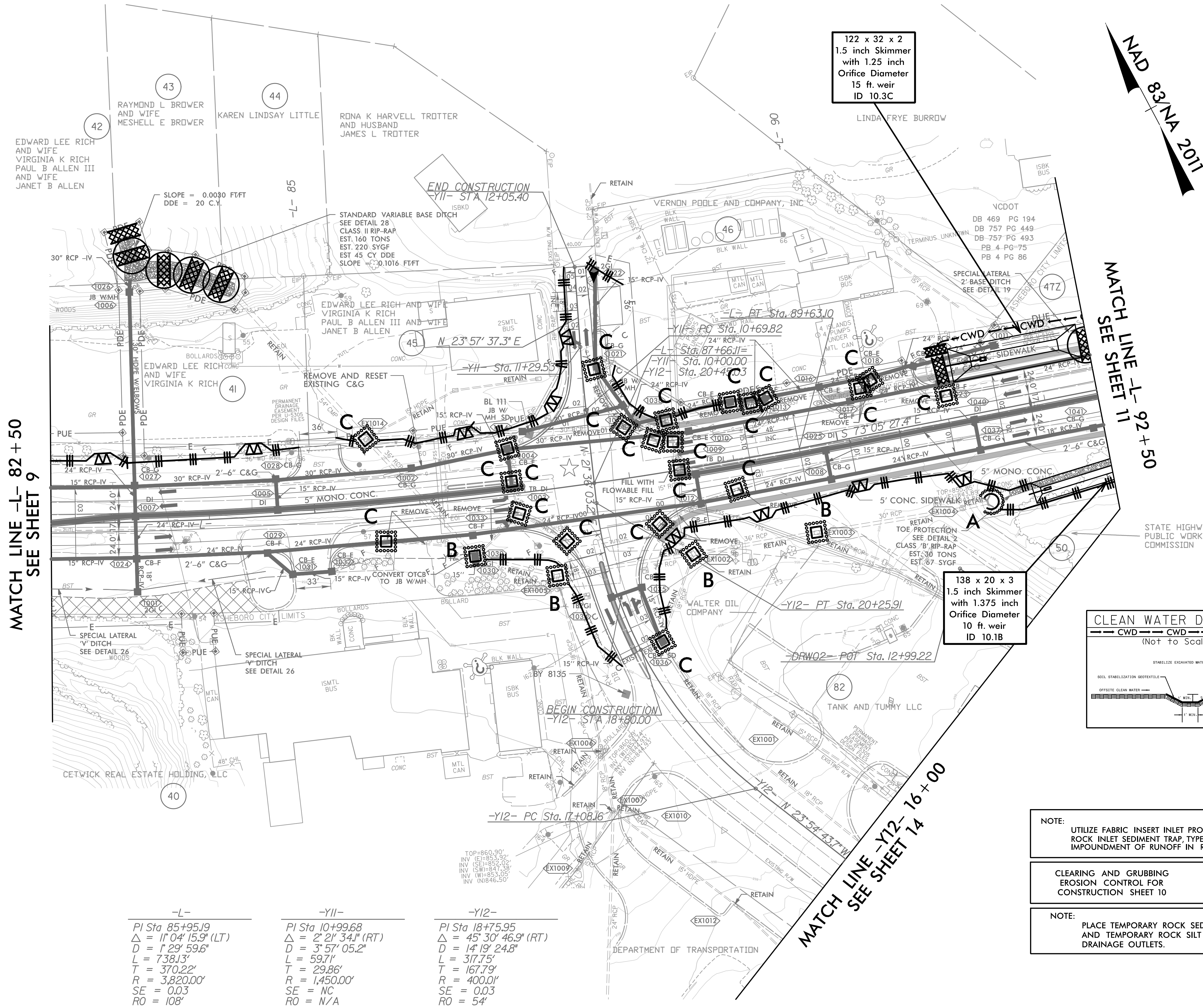
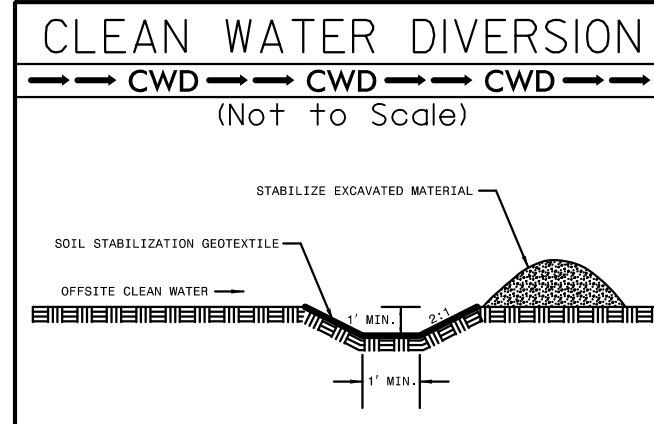


PROJECT REFERENCE NO.	SHEET NO.
U-5813	EC-10/CONST.10
RW SHEET NO.	
ROADWAY DESIGN ENGINEER	HYDRAULICS ENGINEER



122 x 32 x 2
1.5 inch Skimmer
with 1.25 inch
Orifice Diameter
15 ft. weir
ID 10.3C

138 x 20 x 3
1.5 inch Skimmer
with 1.375 inch
Orifice Diameter
10 ft. weir
ID 10.1B



NOTE:
UTILIZE FABRIC INSERT INLET PROTECTION DEVICE IN LIEU OF ROCK INLET SEDIMENT TRAP TYPE-C AS DIRECTED TO AVOID IMPOUNDMENT OF RUNOFF IN ROADWAY OPEN TO TRAFFIC.

CLEARING AND GRUBBING
EROSION CONTROL FOR
CONSTRUCTION SHEET 10

NOTE:
PLACE TEMPORARY ROCK SEDIMENT DAMS TYPE - B AND TEMPORARY ROCK SILT CHECKS TYPE - A AT DRAINAGE OUTLETS.

-L-	-Y11-	-Y12-
PI Sta 85+95.19	PI Sta 10+99.68	PI Sta 18+75.95
Δ = 11' 04" 15.9" (LT)	Δ = 2' 21" 34.1" (RT)	Δ = 45' 30" 46.9" (RT)
D = 1' 29" 59.6"	D = 3' 57" 05.2"	D = 14' 19" 24.8"
L = 738.13'	L = 59.71'	L = 317.75'
T = 370.22'	T = 29.86'	T = 167.79'
R = 3,820.00'	R = 1,450.00'	R = 400.01'
SE = 0.03	SE = NC	SE = 0.03
RO = 108'	RO = N/A	RO = 54'