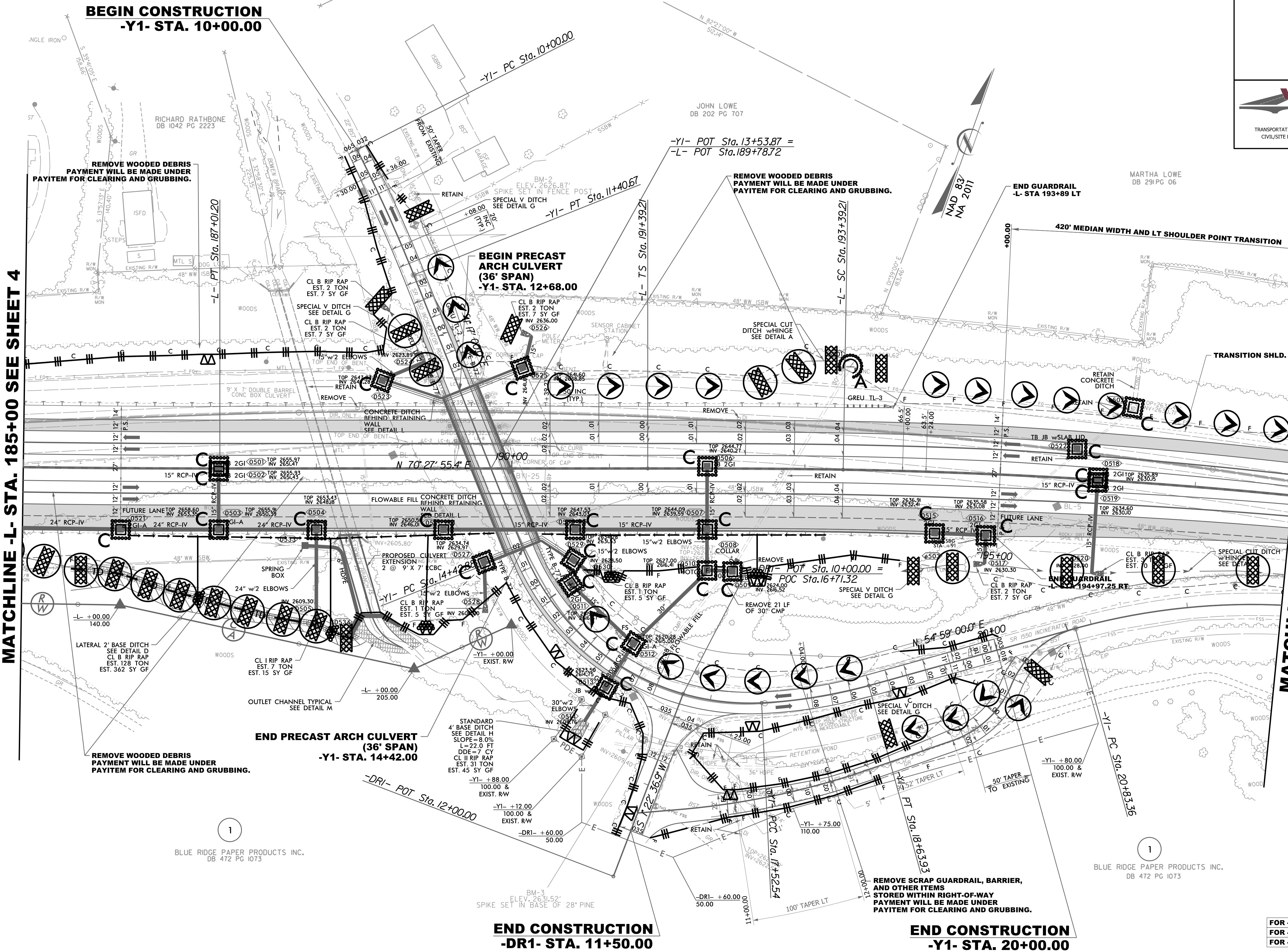


8/17/99  
 11/22/2003  
 11/22/2003



MATCHLINE -L- STA. 185+00 SEE SHEET 4

MATCHLINE -L- STA. 198+00 SEE SHEET 6

**BEGIN CONSTRUCTION  
-Y1- STA. 10+00.00**

**BEGIN PRECAST  
ARCH CULVERT  
(36' SPAN)  
-Y1- STA. 12+68.00**

**END PRECAST ARCH CULVERT  
(36' SPAN)  
-Y1- STA. 14+42.00**

**END CONSTRUCTION  
-DR1- STA. 11+50.00**

**END CONSTRUCTION  
-Y1- STA. 20+00.00**

**REMOVE WOODED DEBRIS  
PAYITEM FOR CLEARING AND GRUBBING.**

**REMOVE WOODED DEBRIS  
PAYITEM FOR CLEARING AND GRUBBING.**

**REMOVE WOODED DEBRIS  
PAYITEM FOR CLEARING AND GRUBBING.**

**REMOVE SCRAP GUARDRAIL, BARRIER,  
AND OTHER ITEMS  
STORED WITHIN RIGHT-OF-WAY  
PAYITEM FOR CLEARING AND GRUBBING.**

BLUE RIDGE PAPER PRODUCTS INC.  
DB 472 PG 1073

BLUE RIDGE PAPER PRODUCTS INC.  
DB 472 PG 1073

FOR -L- PROFILES, SEE SHEET NO. 8  
FOR -Y1- PROFILE, SEE SHEET NO. 10  
FOR -DR1- PROFILE, SEE SHEET NO. 10