

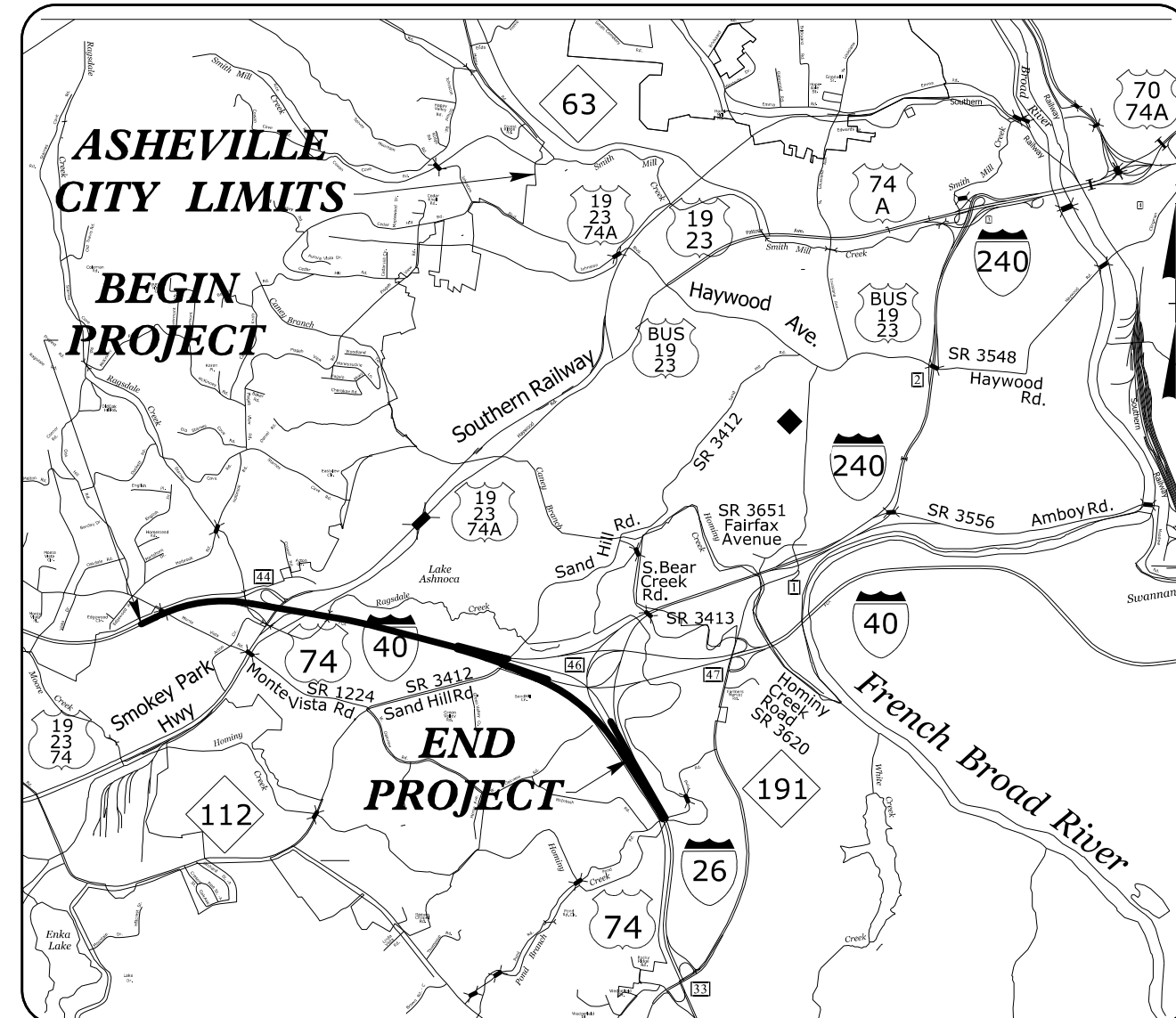
TIP PROJECT: I-2513AA /AB

CONTRACT:

STATE OF NORTH CAROLINA
DIVISION OF HIGHWAYS

T.I.P.NO.	SHEET NO.
I-2513AA /AB	UO-1

NOTE:
ALL UTILITY WORK SHOWN ON THIS SHEET WILL BE DONE BY OTHERS.
NO PAYMENT WILL BE MADE TO THE CONTRACTOR FOR UTILITY WORK SHOWN ON THIS SHEET.

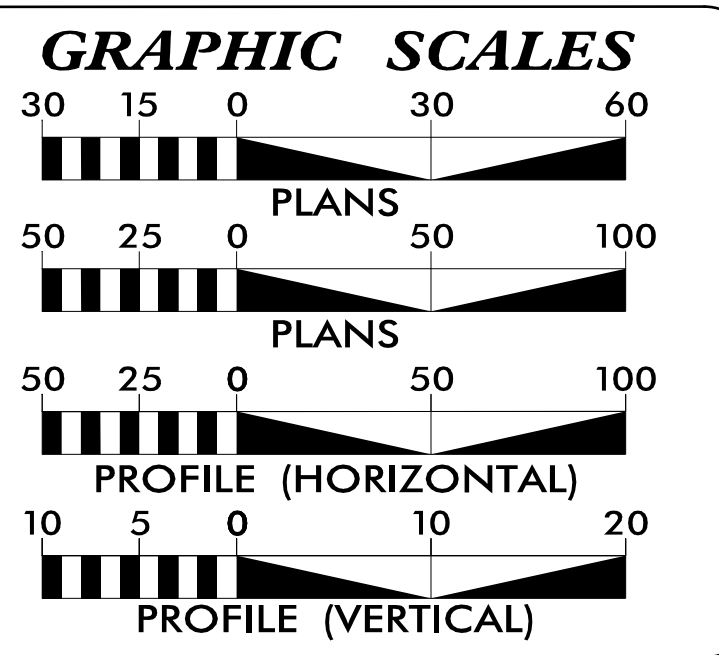
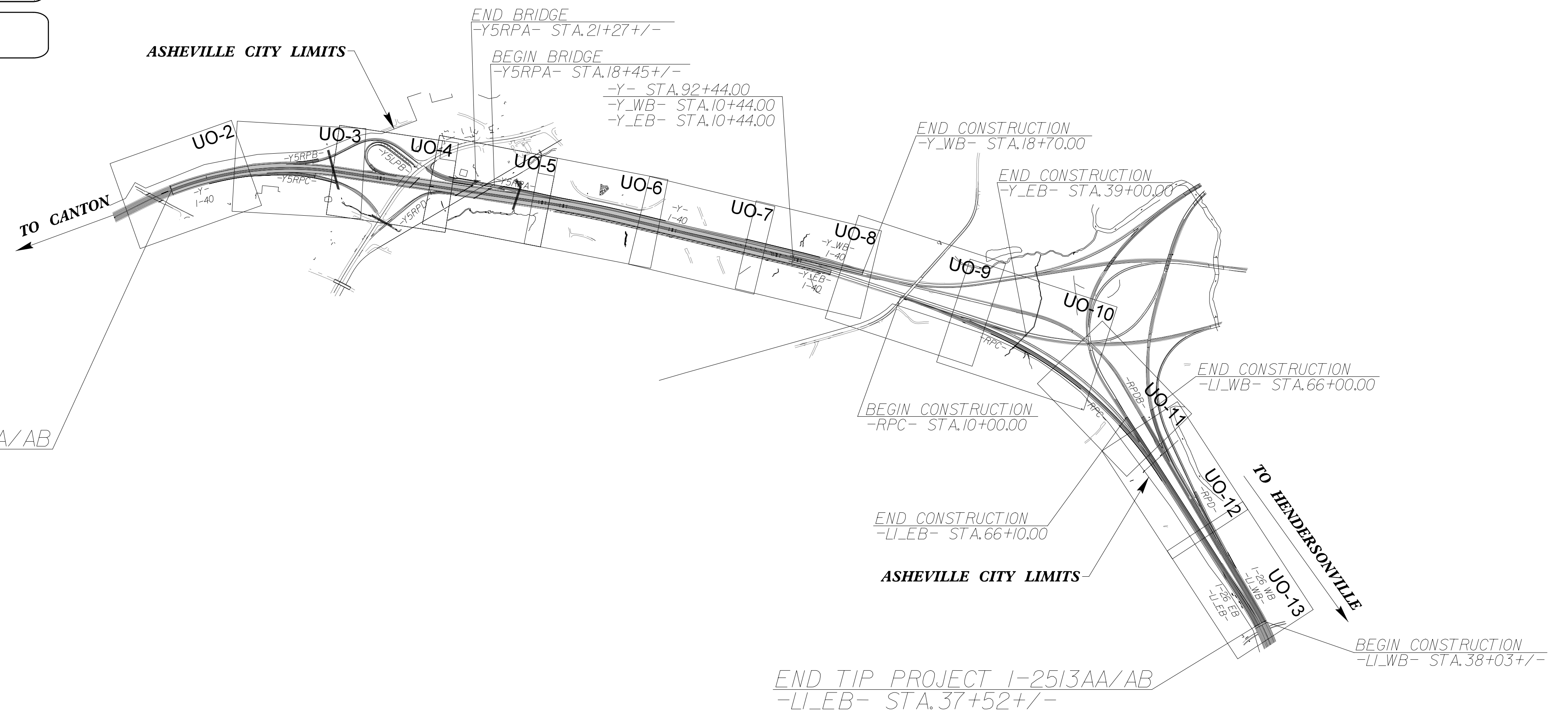
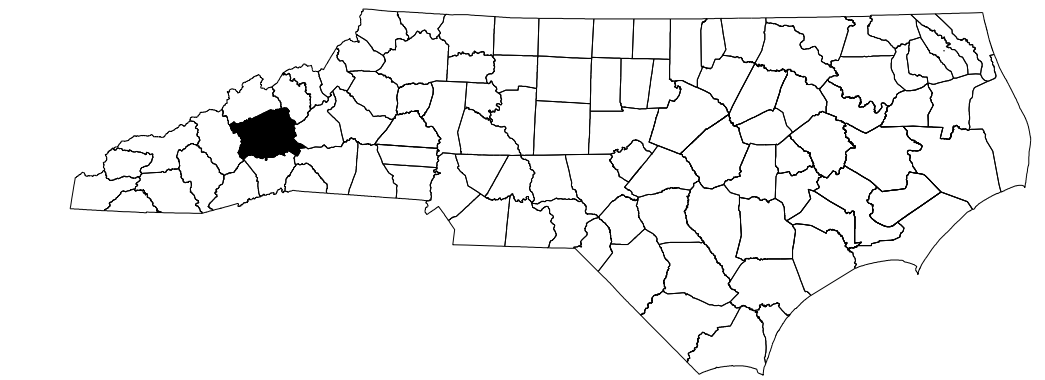


VICINITY MAP

**UTILITIES BY OTHERS PLANS
BUNCOMBE COUNTY**

LOCATION: I-40 FROM EAST OF SR 1224 (MONTE VISTA RD) TO WEST OF SR 3412 (SAND HILL RD) AND I-40 AT I-26 AND US 19/23 INTERCHANGES

TYPE OF WORK: UTILITIES BY OTHERS RELOCATIONS



INDEX OF SHEETS

SHEET NO.:	DESCRIPTION:
UO-1	TITLE SHEET
UO-2 THRU UO-13	UBO PLAN SHEETS

UTILITY OWNERS WITH CONFLICTS

(A) POWER DISTRIBUTION - DUKE ENERGY

PREPARED IN THE OFFICE OF:

AECOM

AECOM TECHNICAL SERVICES OF NORTH CAROLINA, INC.
5438 WADE PARK BLVD, SUITE 200, RALEIGH, NC 27607
919-461-1100
F - 0342

Matt Kemp, PE	UTILITY PROJECT MANAGER
Gary Swinson	PROJECT UTILITY COORDINATOR

**DIVISION OF HIGHWAYS
UTILITIES UNIT**
1555 MAIL SERVICES CENTER
RALEIGH, NC 27699-1555
PHONE (919) 707-6690
FAX (919) 250-4151

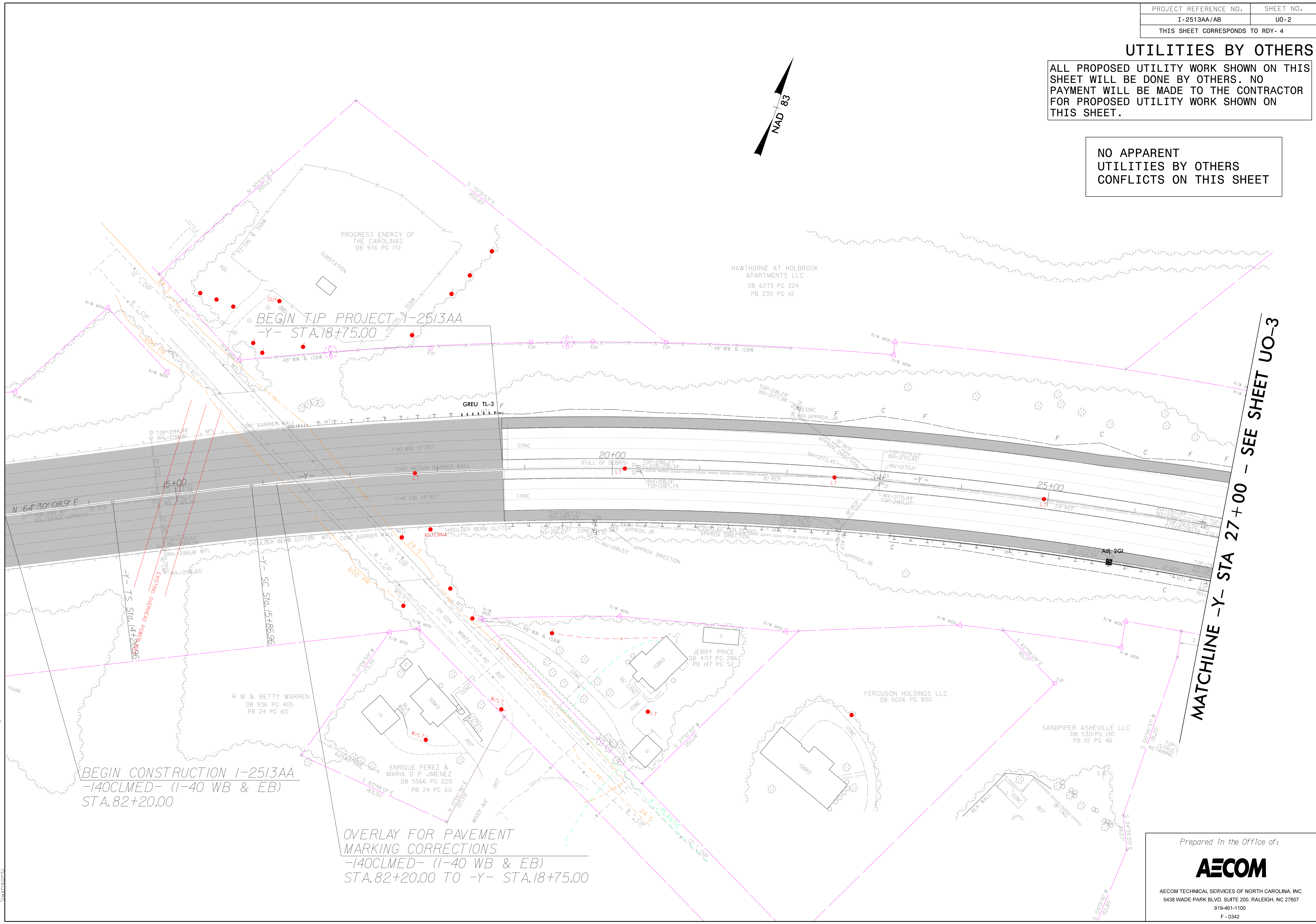
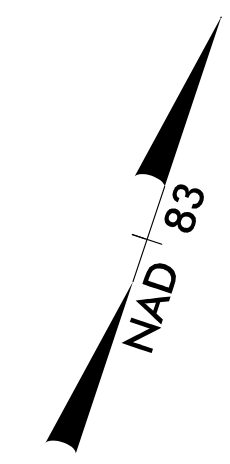
Donald Hampton	UTILITIES REGIONAL ENGINEER
Jong-Tae Yoon, PE	UTILITIES ENGINEER
Stephen G. Sealy	UTILITIES AREA COORDINATOR
Steve Trexler	UTILITIES COORDINATOR

2:54:54 PM C:\pwworking\aecom\ds21\nc_2020\d0136229\I2513AA_uo_1.tsh.dgn SwinsonG

UTILITIES BY OTHERS

ALL PROPOSED UTILITY WORK SHOWN ON THIS SHEET WILL BE DONE BY OTHERS. NO PAYMENT WILL BE MADE TO THE CONTRACTOR FOR PROPOSED UTILITY WORK SHOWN ON THIS SHEET.

NO APPARENT UTILITIES BY OTHERS CONFLICTS ON THIS SHEET



BEGIN CONSTRUCTION I-2513AA
-140CLMED- (I-40 WB & EB)
STA. 82+20.00

OVERLAY FOR PAVEMENT
MARKING CORRECTIONS
-140CLMED- (I-40 WB & EB)
STA. 82+20.00 TO -Y- STA. 18+75.00

MATCHLINE -Y- STA 27+00 - SEE SHEET UO-3

Prepared in the Office of:



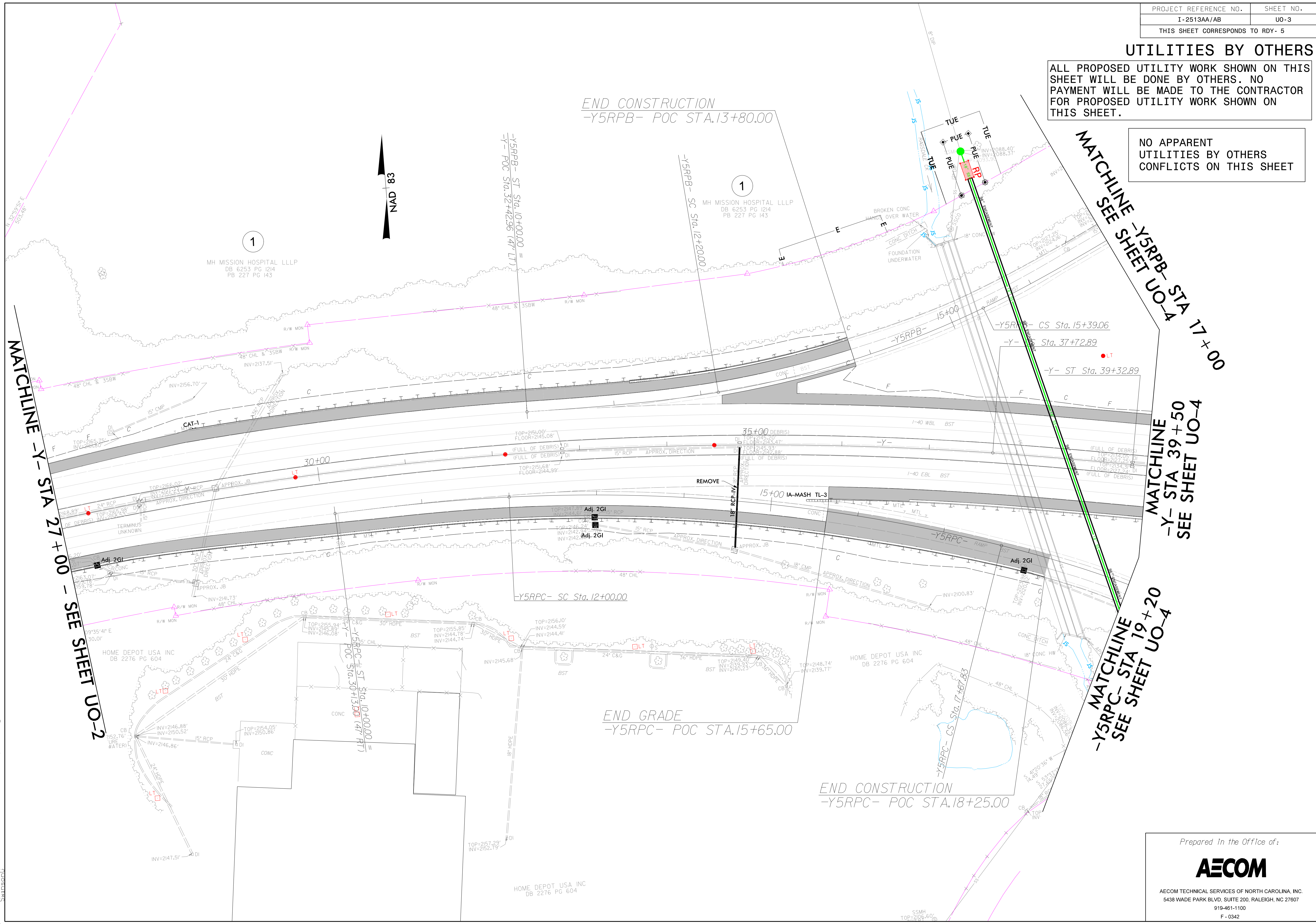
AECOM TECHNICAL SERVICES OF NORTH CAROLINA, INC.
5438 WADE PARK BLVD, SUITE 200, RALEIGH, NC 27607
919-461-1100
F-0342

7:44:40 AM 2/20/2020 d:\0136229\12513AA-uo_psh_13.dgn

UTILITIES BY OTHERS

ALL PROPOSED UTILITY WORK SHOWN ON THIS SHEET WILL BE DONE BY OTHERS. NO PAYMENT WILL BE MADE TO THE CONTRACTOR FOR PROPOSED UTILITY WORK SHOWN ON THIS SHEET.

NO APPARENT UTILITIES BY OTHERS CONFLICTS ON THIS SHEET



MATCHLINE -Y- STA 27+00 - SEE SHEET UO-2

MATCHLINE -Y5RPB- STA 17+00 SEE SHEET UO-4

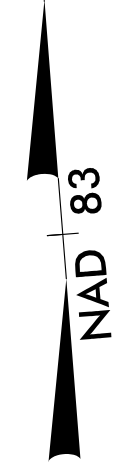
MATCHLINE -Y- STA 39+50 SEE SHEET UO-4

MATCHLINE -Y5RPC- STA 19+20 SEE SHEET UO-4

END CONSTRUCTION
-Y5RPB- POC STA.13+80.00

END GRADE
-Y5RPC- POC STA.15+65.00

END CONSTRUCTION
-Y5RPC- POC STA.18+25.00



7:53:21 AM
 C:\Users\jking\OneDrive\Documents\2020\12513AA_uo_psh_14.dgn
 jking

Prepared in the Office of:



AECOM TECHNICAL SERVICES OF NORTH CAROLINA, INC.
 5438 WADE PARK BLVD, SUITE 200, RALEIGH, NC 27607
 919-461-1100
 F-0342

UTILITIES BY OTHERS

ALL PROPOSED UTILITY WORK SHOWN ON THIS SHEET WILL BE DONE BY OTHERS. NO PAYMENT WILL BE MADE TO THE CONTRACTOR FOR PROPOSED UTILITY WORK SHOWN ON THIS SHEET.

NO APPARENT UTILITIES BY OTHERS CONFLICTS ON THIS SHEET

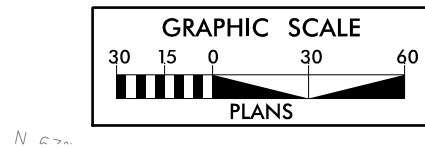
END CONSTRUCTION I-2513AB
-Y5RPA- POC STA. 27+49.45

MATCHLINE -Y- STA 51+00 - SEE SHEET UO-5

MATCHLINE -Y5RPB- STA 17+00
SEE SHEET UO-3

MATCHLINE -Y- STA 39+50
SEE SHEET UO-3

MATCHLINE -Y5RPC- STA 19+20
SEE SHEET UO-3



Prepared in the Office of:



AECOM TECHNICAL SERVICES OF NORTH CAROLINA, INC.
5438 WADE PARK BLVD, SUITE 200, RALEIGH, NC 27607
919-461-1100
F-0342

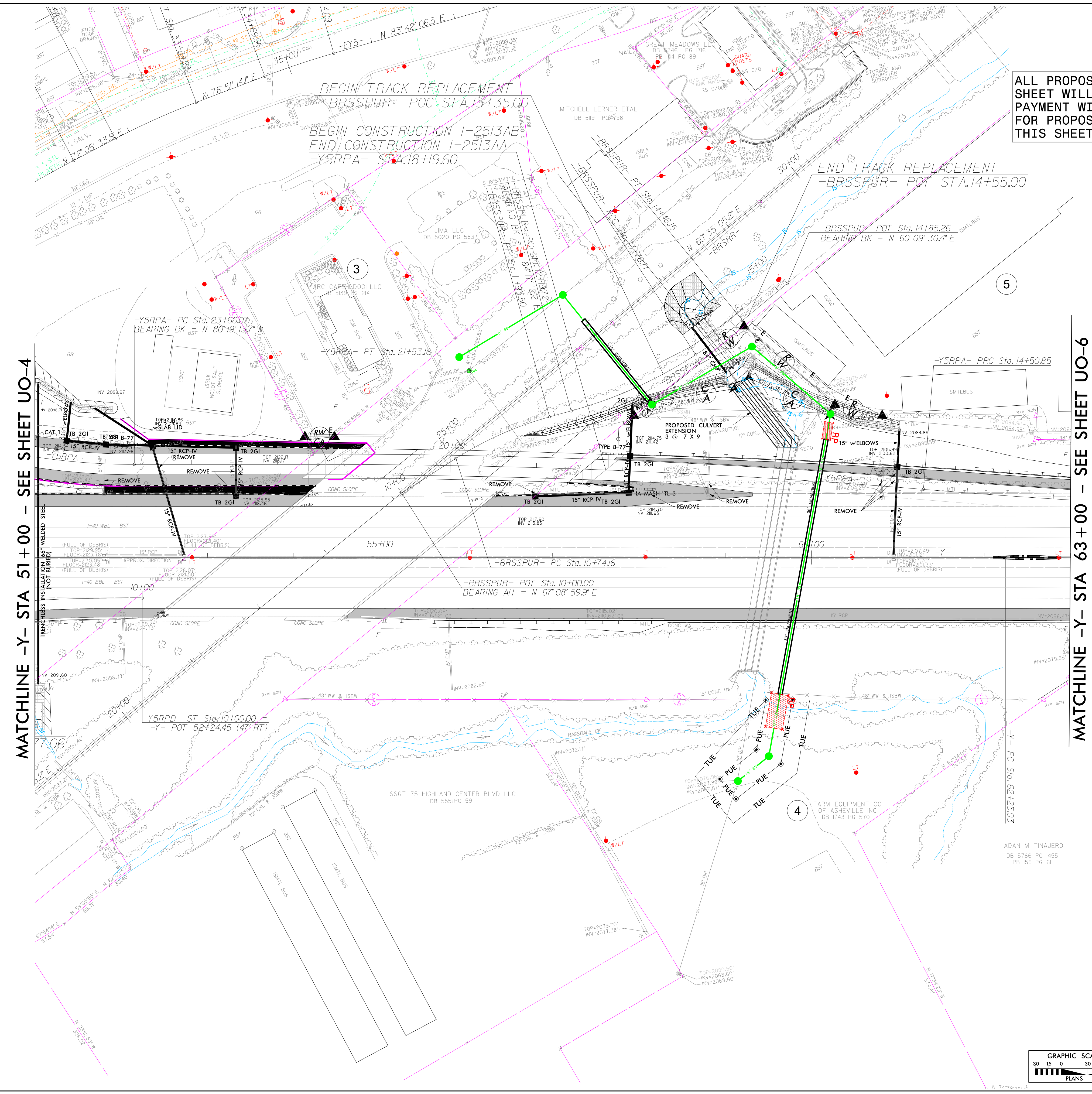
8:32:18 AM 2020.d0136229\12513AA_uo_psh_15A.dgn

PROJECT REFERENCE NO.	SHEET NO.
I-2513AA/AB	U0-5
THIS SHEET CORRESPONDS TO RDY-6	

UTILITIES BY OTHERS

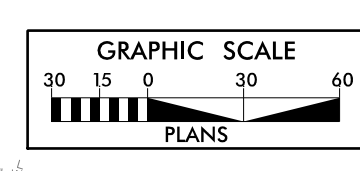
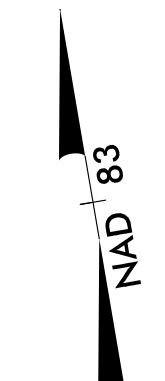
ALL PROPOSED UTILITY WORK SHOWN ON THIS SHEET WILL BE DONE BY OTHERS. NO PAYMENT WILL BE MADE TO THE CONTRACTOR FOR PROPOSED UTILITY WORK SHOWN ON THIS SHEET.

NO APPARENT UTILITIES BY OTHERS CONFLICTS ON THIS SHEET



MATCHLINE -Y- STA 51+00 - SEE SHEET UO-4

MATCHLINE -Y- STA 63+00 - SEE SHEET UO-6



Prepared in the Office of:

AECOM

AECOM TECHNICAL SERVICES OF NORTH CAROLINA, INC.
5438 WADE PARK BLVD, SUITE 200, RALEIGH, NC 27607
919-461-1100
F-0342

8:22:25 AM 2/20/2020 \\0136229\12513AA_uo_psh_15B.dgn

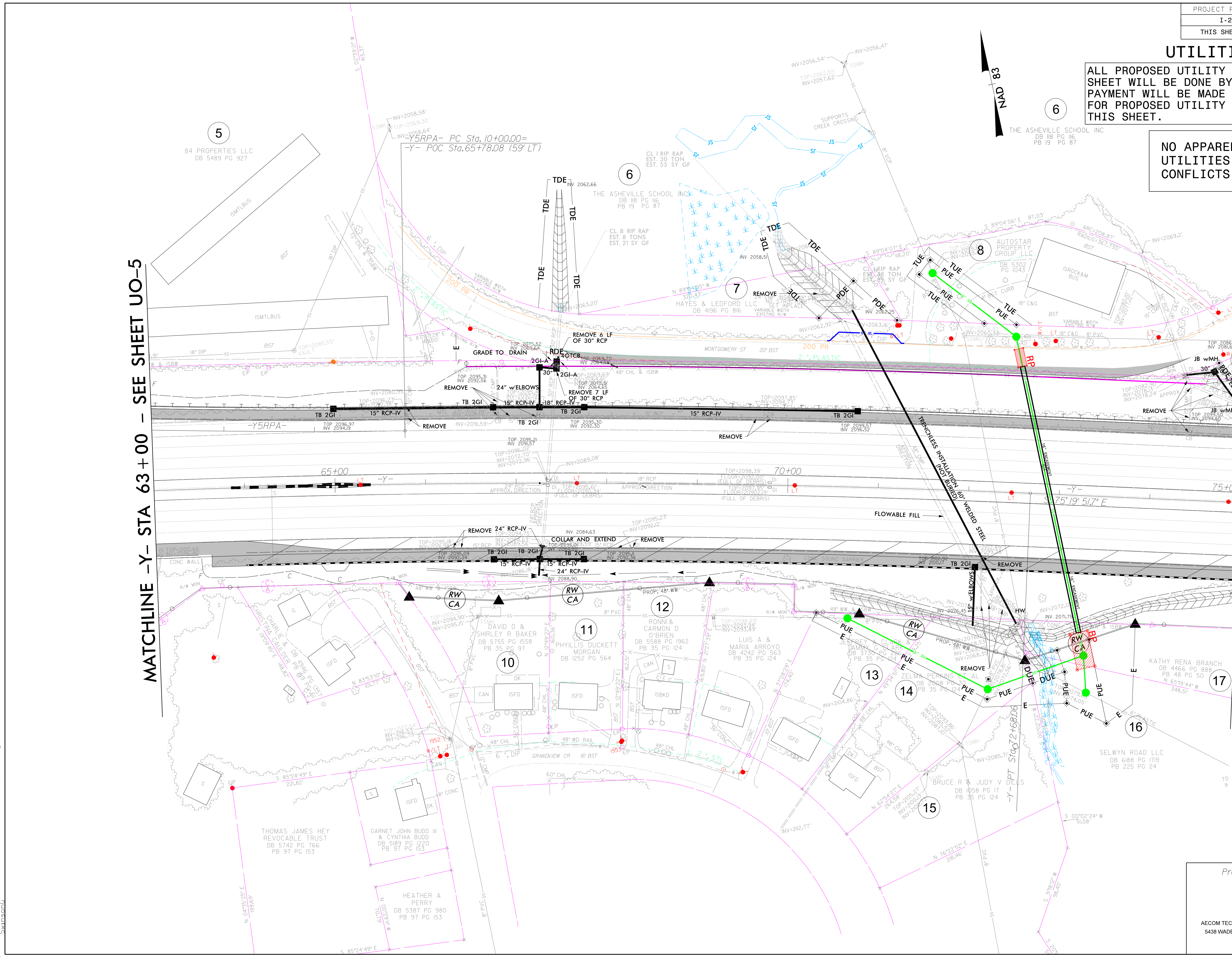
UTILITIES BY OTHERS

ALL PROPOSED UTILITY WORK SHOWN ON THIS SHEET WILL BE DONE BY OTHERS. NO PAYMENT WILL BE MADE TO THE CONTRACTOR FOR PROPOSED UTILITY WORK SHOWN ON THIS SHEET.

NO APPARENT UTILITIES BY OTHERS CONFLICTS ON THIS SHEET

MATCHLINE -Y- STA 63+00 - SEE SHEET UO-5

MATCHLINE -Y- STA 75+00 - SEE SHEET UO-7



Prepared in the Office of:



AECOM TECHNICAL SERVICES OF NORTH CAROLINA, INC.
 5438 WADE PARK BLVD, SUITE 200, RALEIGH, NC 27607
 919-461-1100
 F-0342

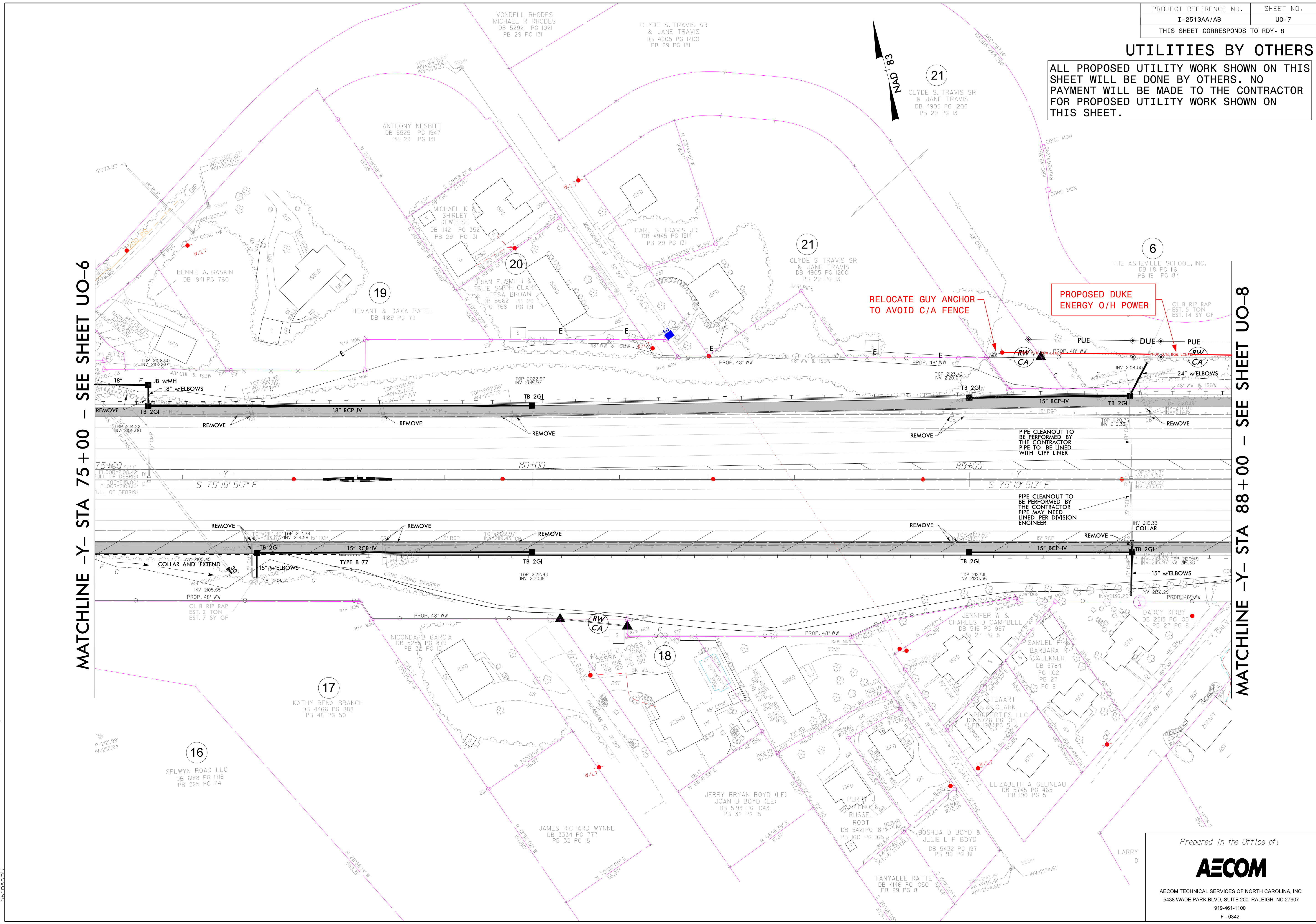
8:36:14 AM
 C:\working\aecom\2020\12513AA\uo_psh_16.dgn

UTILITIES BY OTHERS

ALL PROPOSED UTILITY WORK SHOWN ON THIS SHEET WILL BE DONE BY OTHERS. NO PAYMENT WILL BE MADE TO THE CONTRACTOR FOR PROPOSED UTILITY WORK SHOWN ON THIS SHEET.

MATCHLINE -Y- STA 75+00 - SEE SHEET UO-6

MATCHLINE -Y- STA 88+00 - SEE SHEET UO-8

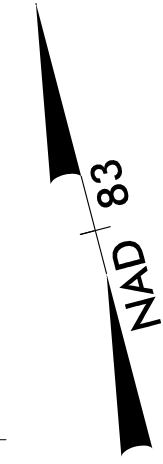


8:38:59 AM 2020/01/30 12:51:34A-uo_psh_17.dgn

UTILITIES BY OTHERS

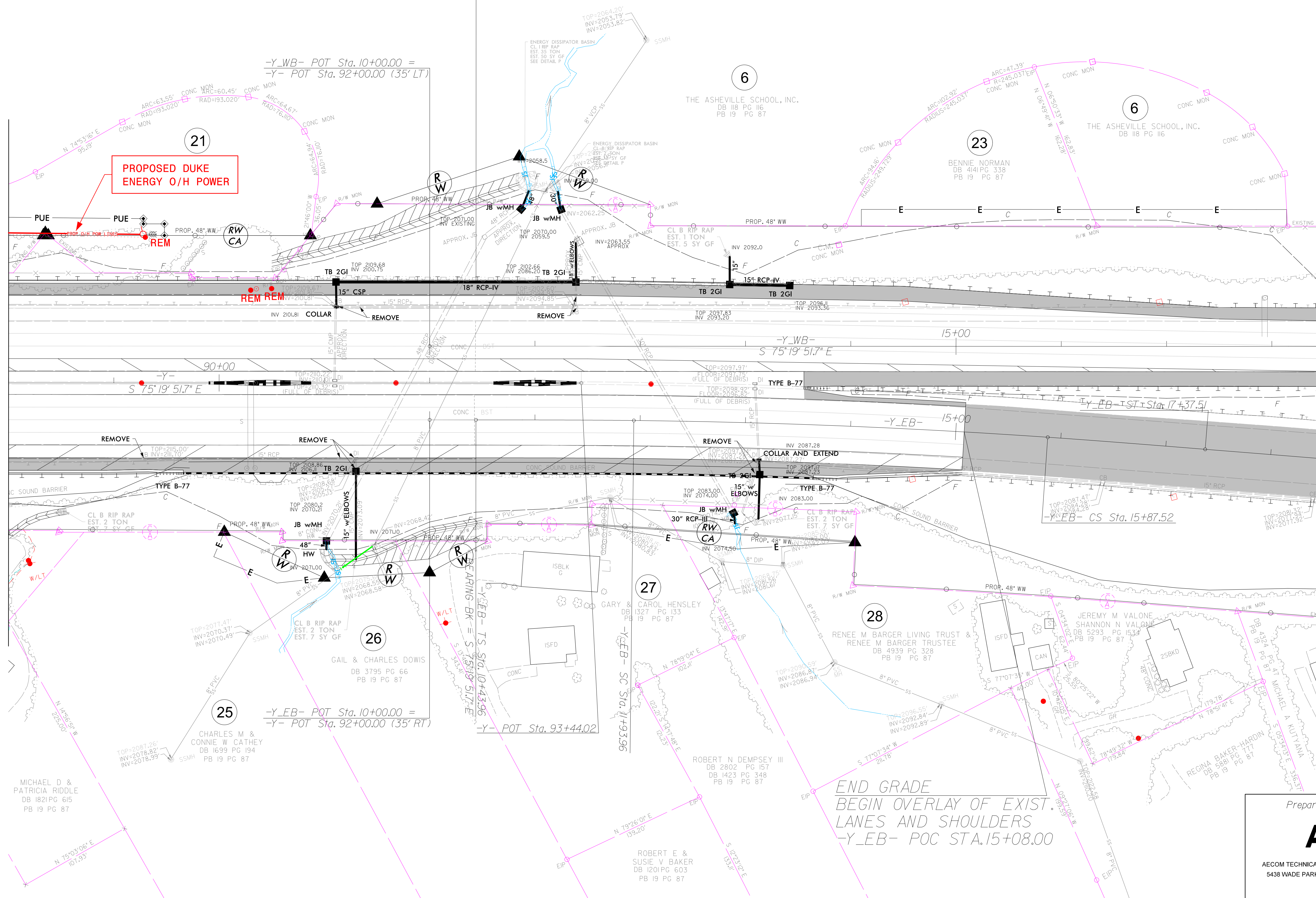
ALL PROPOSED UTILITY WORK SHOWN ON THIS SHEET WILL BE DONE BY OTHERS. NO PAYMENT WILL BE MADE TO THE CONTRACTOR FOR PROPOSED UTILITY WORK SHOWN ON THIS SHEET.

END PAVEMENT RECONSTRUCTION (I-2513AA)
 END CONCRETE LANES
 -Y- STA.92+44.00 LT & RT



MATCHLINE -Y- STA 88 + 00 - SEE SHEET UO-7

MATCHLINE -Y_WB- STA 17 + 00 - SEE SHEET UO-9



END GRADE
 BEGIN OVERLAY OF EXIST.
 LANES AND SHOULDERS
 -Y_EB- POC STA.15+08.00

Prepared in the Office of:



AECOM TECHNICAL SERVICES OF NORTH CAROLINA, INC.
 5438 WADE PARK BLVD, SUITE 200, RALEIGH, NC 27607
 919-461-1100
 F-0342

8:40:51 AM 2/20/2010 10:13:6229912513AA_uo_psh_18.dgn

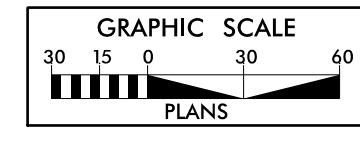
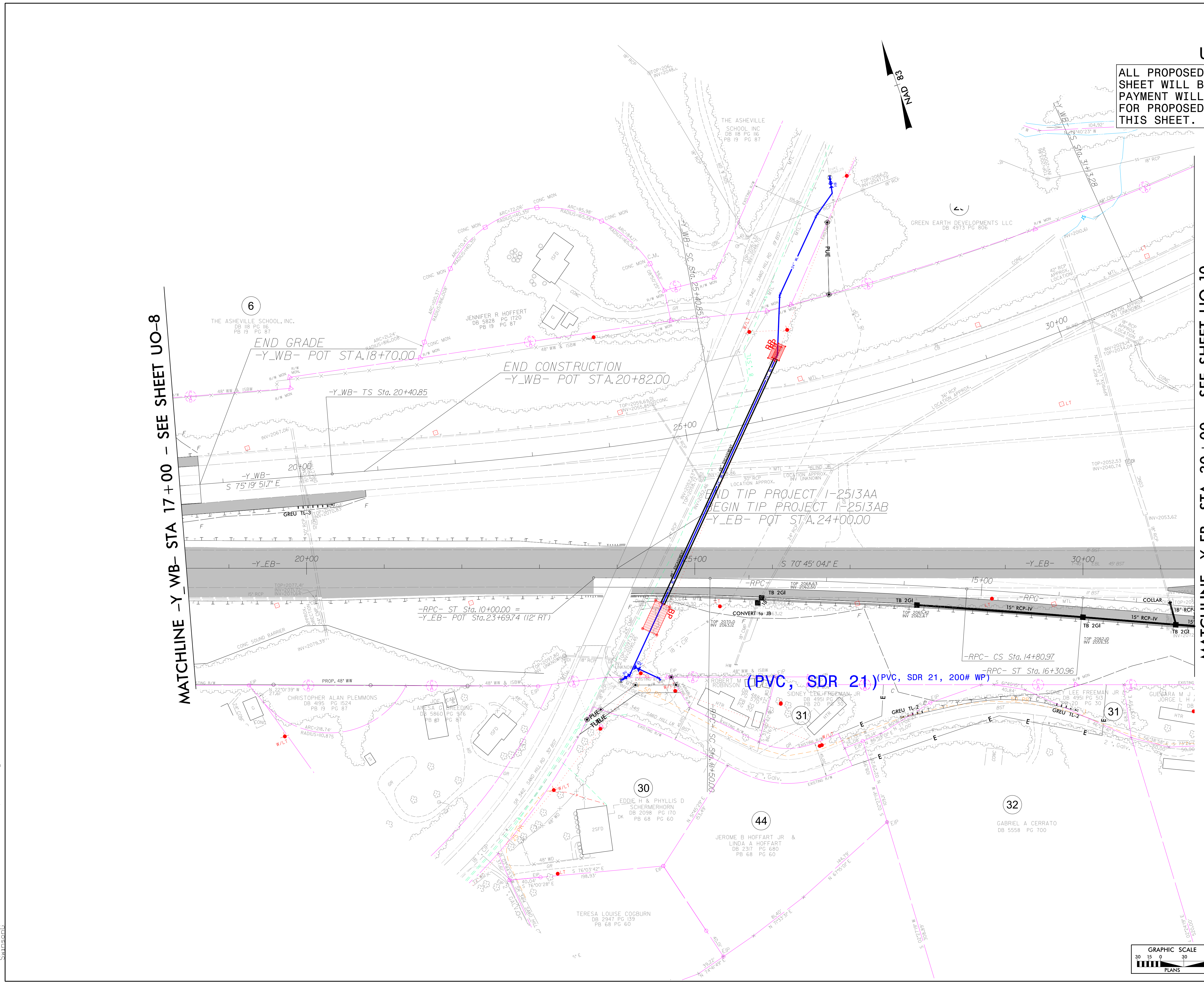
UTILITIES BY OTHERS

ALL PROPOSED UTILITY WORK SHOWN ON THIS SHEET WILL BE DONE BY OTHERS. NO PAYMENT WILL BE MADE TO THE CONTRACTOR FOR PROPOSED UTILITY WORK SHOWN ON THIS SHEET.

NO APPARENT UTILITIES BY OTHERS CONFLICTS ON THIS SHEET

MATCHLINE -Y_WB- STA 17+00 - SEE SHEET UO-8

MATCHLINE -Y_EB- STA 30+00 - SEE SHEET UO-10



Prepared in the Office of:

AECOM

AECOM TECHNICAL SERVICES OF NORTH CAROLINA, INC.
 5438 WADE PARK BLVD, SUITE 200, RALEIGH, NC 27607
 919-461-1100
 F-0342

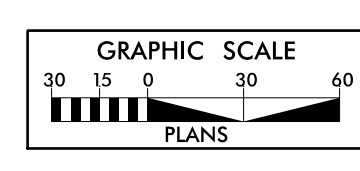
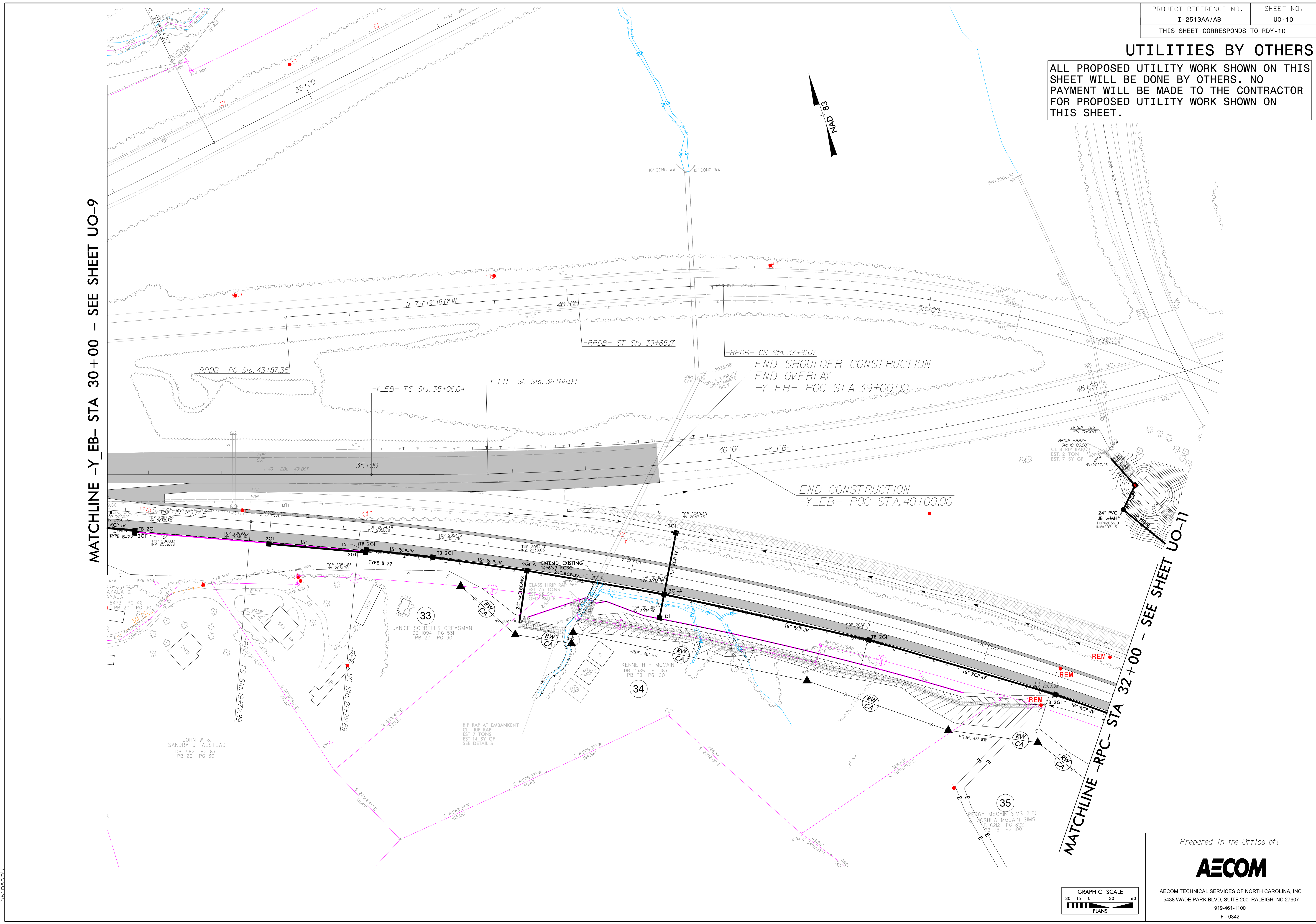
8:46:21 AM 8/20/2020 1362229\I2513AA_uo_psh_19A.dgn

UTILITIES BY OTHERS

ALL PROPOSED UTILITY WORK SHOWN ON THIS SHEET WILL BE DONE BY OTHERS. NO PAYMENT WILL BE MADE TO THE CONTRACTOR FOR PROPOSED UTILITY WORK SHOWN ON THIS SHEET.

MATCHLINE -Y_EB- STA 30+00 - SEE SHEET UO-9

MATCHLINE -RPC- STA 32+00 - SEE SHEET UO-11



Prepared in the Office of:

AECOM

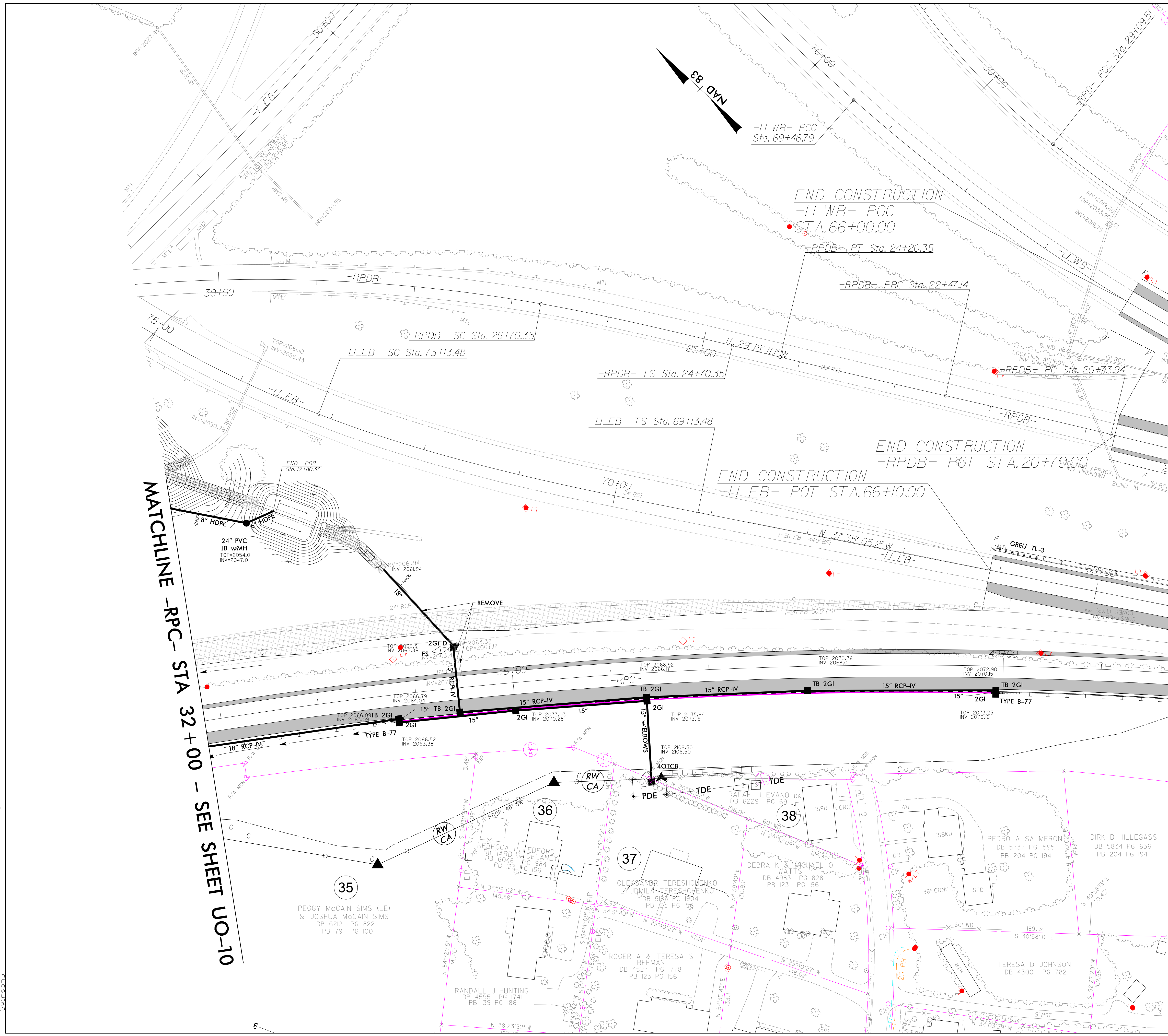
AECOM TECHNICAL SERVICES OF NORTH CAROLINA, INC.
 5438 WADE PARK BLVD, SUITE 200, RALEIGH, NC 27607
 919-461-1100
 F-0342

8:46:07 AM 2020/01/30 12:51:34A..._psh_19B.dgn
 C:\Users\...

UTILITIES BY OTHERS

ALL PROPOSED UTILITY WORK SHOWN ON THIS SHEET WILL BE DONE BY OTHERS. NO PAYMENT WILL BE MADE TO THE CONTRACTOR FOR PROPOSED UTILITY WORK SHOWN ON THIS SHEET.

NO APPARENT UTILITIES BY OTHERS CONFLICTS ON THIS SHEET

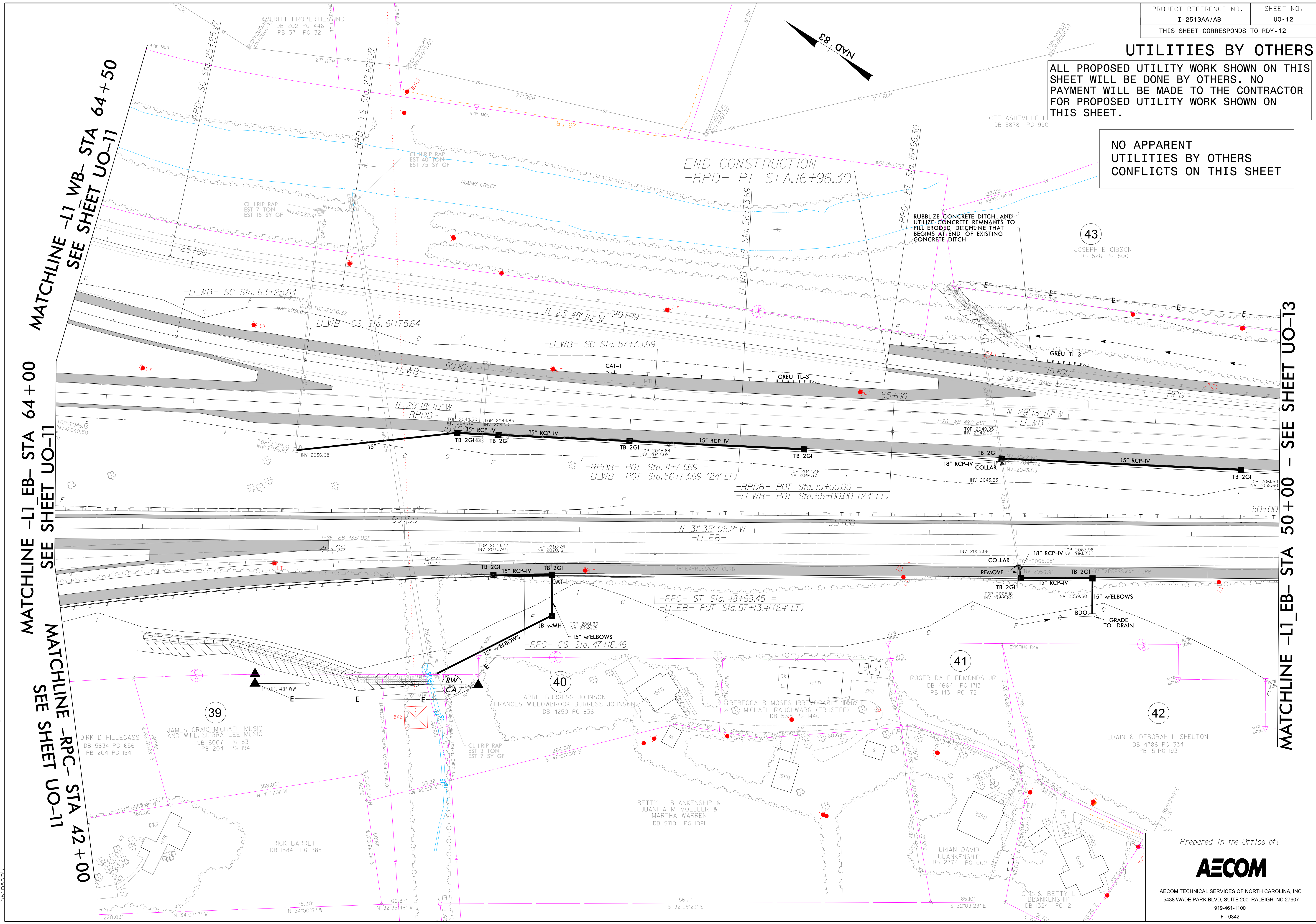


8:47:48 AM 2/20/2020 d:\0136229\12513AA_uo_psh_20.dgn
 King\aeec\...

UTILITIES BY OTHERS

ALL PROPOSED UTILITY WORK SHOWN ON THIS SHEET WILL BE DONE BY OTHERS. NO PAYMENT WILL BE MADE TO THE CONTRACTOR FOR PROPOSED UTILITY WORK SHOWN ON THIS SHEET.

NO APPARENT UTILITIES BY OTHERS CONFLICTS ON THIS SHEET



MATCHLINE -L1 WB- STA 64+50
SEE SHEET UO-11

MATCHLINE -L1 EB- STA 64+00
SEE SHEET UO-11

MATCHLINE -RPC- STA 42+00
SEE SHEET UO-11

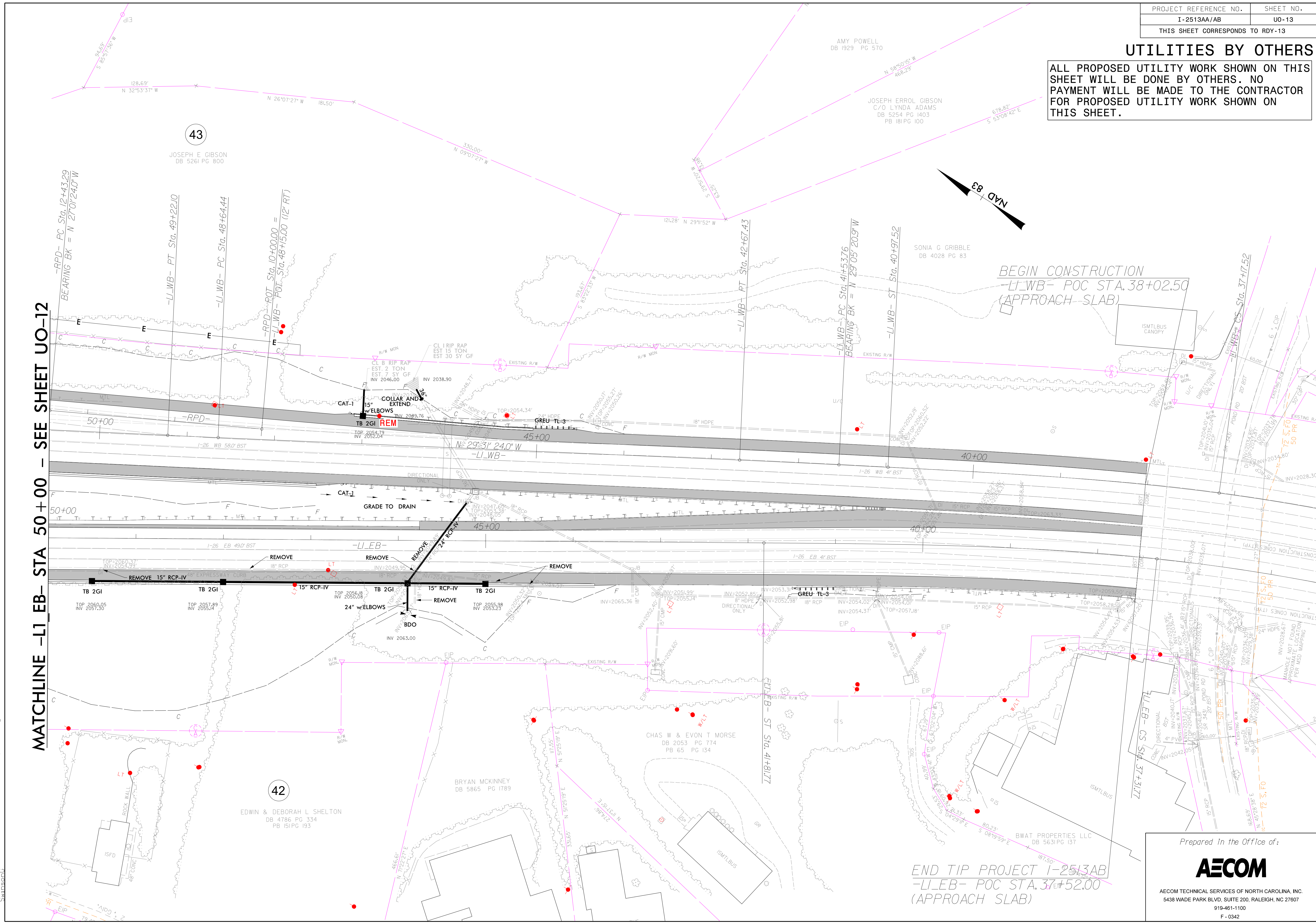
MATCHLINE -L1 EB- STA 50+00 - SEE SHEET UO-13

8:49:15 AM
C:\working\arec\2020\12513AA\uo_psh_21.dgn

UTILITIES BY OTHERS

ALL PROPOSED UTILITY WORK SHOWN ON THIS SHEET WILL BE DONE BY OTHERS. NO PAYMENT WILL BE MADE TO THE CONTRACTOR FOR PROPOSED UTILITY WORK SHOWN ON THIS SHEET.

MATCHLINE -L1_EB- STA 50+00 - SEE SHEET UO-12



END TIP PROJECT I-2513AB
 -L1_EB- POC STA. 37+52.00
 (APPROACH SLAB)

Prepared in the Office of:



AECOM TECHNICAL SERVICES OF NORTH CAROLINA, INC.
 5438 WADE PARK BLVD, SUITE 200, RALEIGH, NC 27607
 919-461-1100
 F-0342

8:55:50 AM 2020/01/30 13:25:12513AA_uo_psh_22.dgn