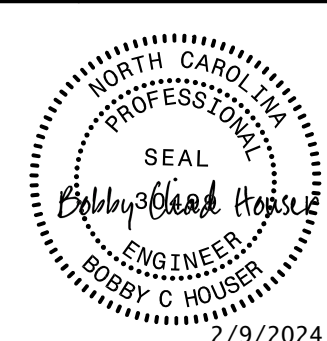
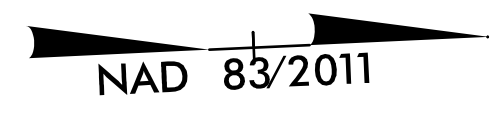


PROJECT REFERENCE NO.	SHEET NO.
U-5809	UC-6
DESIGNED BY: BCH	
DRAWN BY: DLR	
CHECKED BY:	
APPROVED BY:	
REVISED:	
NORTH CAROLINA DEPARTMENT OF TRANSPORTATION UTILITIES ENGINEERING SEC. PHONE: (919) 707-6690 FAX: (919) 250-4151 UTILITY CONSTRUCTION PLANS ONLY	
<b>UTILITY CONSTRUCTION</b> DOCUMENT NOT CONSIDERED FINAL UNLESS ALL SIGNATURES COMPLETED	

**COMBINED WATER & SEWER LINE DESIGN ON THIS SHEET**



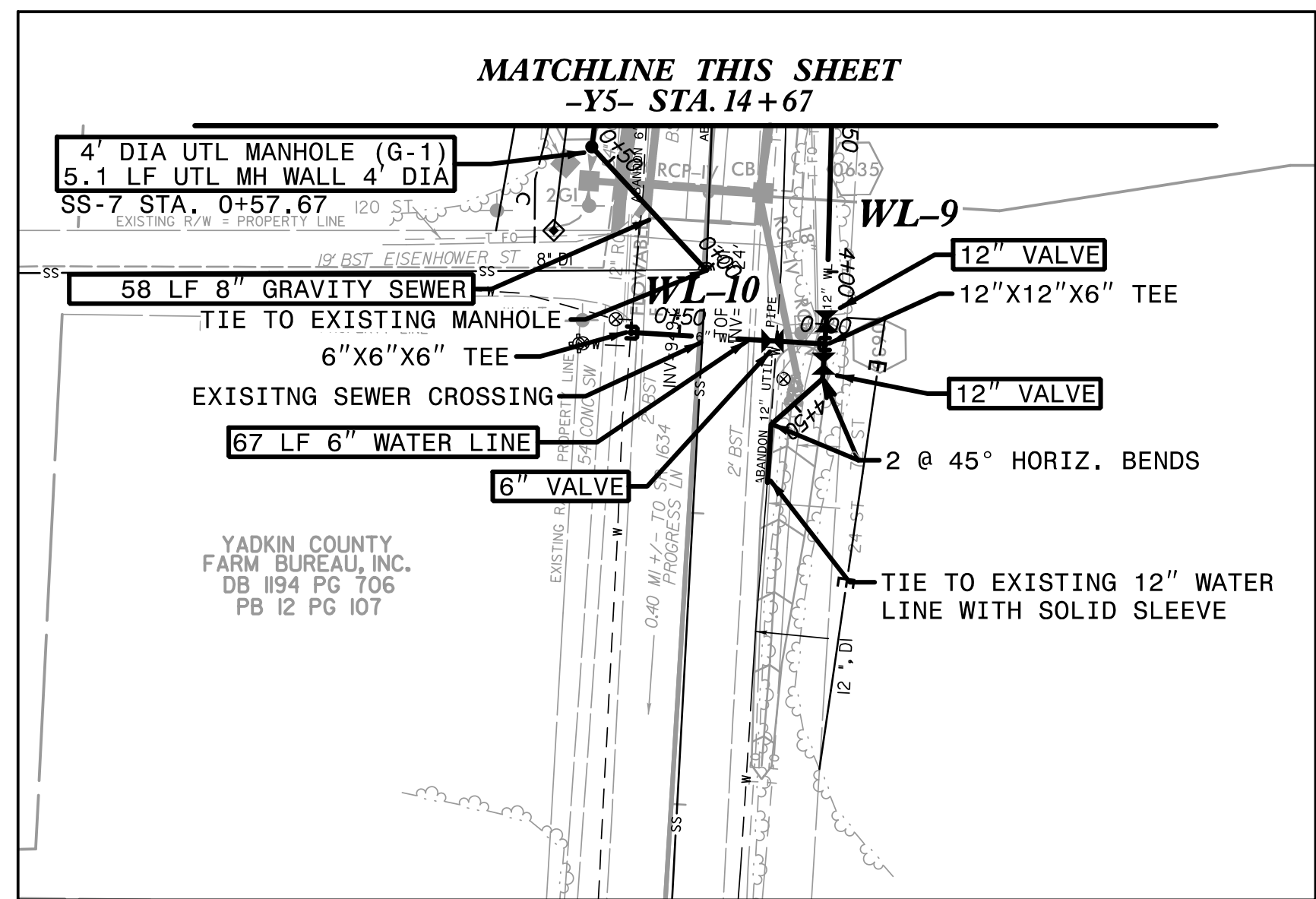
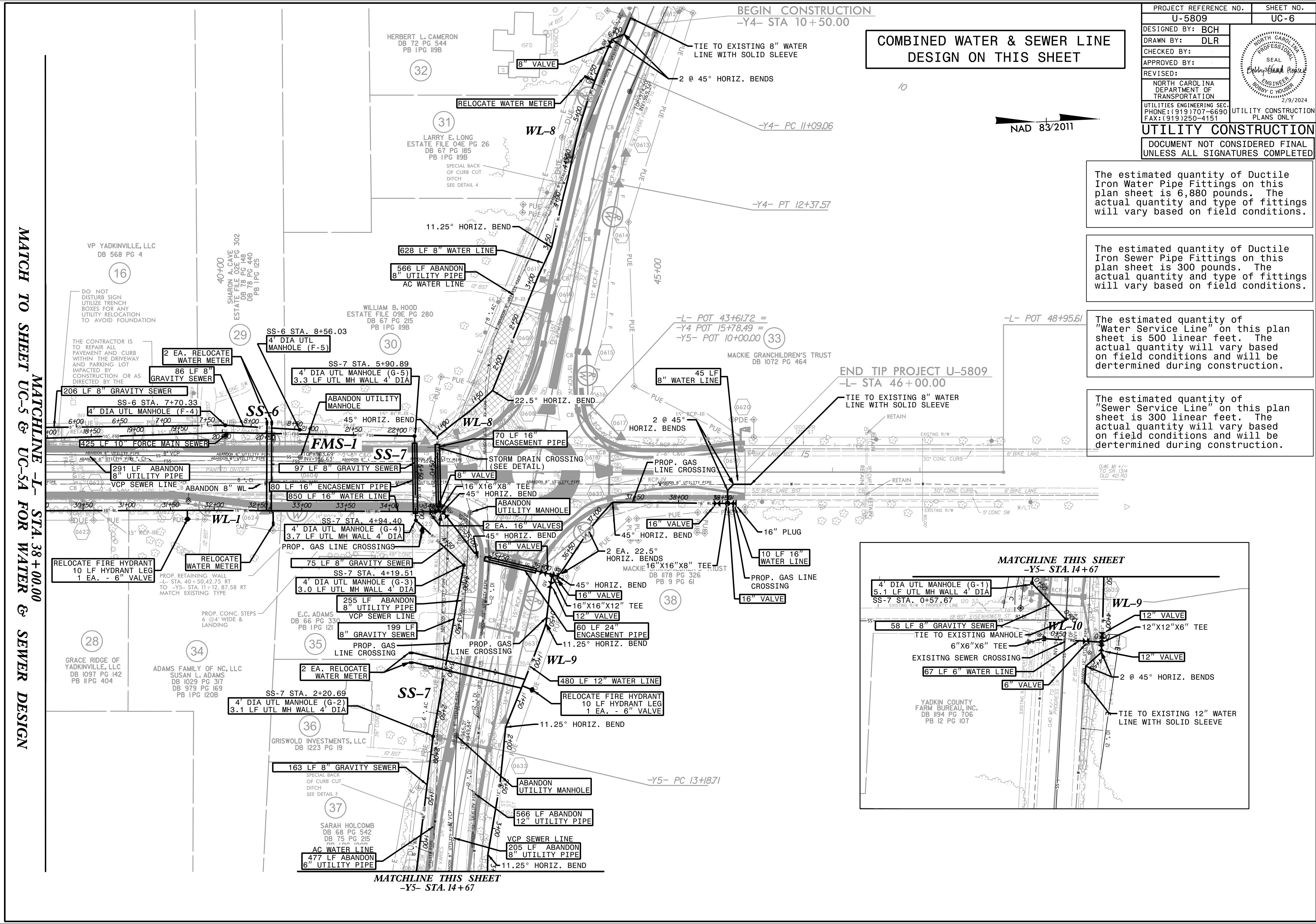
The estimated quantity of Ductile Iron Water Pipe Fittings on this plan sheet is 6,880 pounds. The actual quantity and type of fittings will vary based on field conditions.

The estimated quantity of Ductile Iron Sewer Pipe Fittings on this plan sheet is 300 pounds. The actual quantity and type of fittings will vary based on field conditions.

The estimated quantity of "Water Service Line" on this plan sheet is 500 linear feet. The actual quantity will vary based on field conditions and will be determined during construction.

The estimated quantity of "Sewer Service Line" on this plan sheet is 300 linear feet. The actual quantity will vary based on field conditions and will be determined during construction.

MATCHLINE TO SHEET UC-5 & UC-5A FOR WATER & SEWER DESIGN



MATCHLINE THIS SHEET -Y5- STA. 14+67

END TIP PROJECT U-5809 -L- STA 46+00.00

BEGIN CONSTRUCTION -Y4- STA 10+50.00

DO NOT DISTURB SIGN UTILIZE TRENCH BOXES FOR ANY UTILITY RELOCATION TO AVOID FOUNDATION

THE CONTRACTOR IS TO REPAIR ALL PAVEMENT AND CURB WITHIN THE DRIVEWAY AND PARKING LOT IMPACTED BY CONSTRUCTION OR AS DIRECTED BY THE

RELOCATE FIRE HYDRANT 10 LF HYDRANT LEG 1 EA. - 6\"/>

RELOCATE WATER METER

PROP. CONC. STEPS 6 @ 4\"/>

SS-7 STA. 2+20.69 4\"/>

163 LF 8\"/>

SARAH HOLCOMB DB 68 PG 542 DB 75 PG 215

477 LF ABANDON 6\"/>

VCP SEWER LINE 205 LF ABANDON 8\"/>

566 LF ABANDON 12\"/>

ABANDON UTILITY MANHOLE

RELOCATE FIRE HYDRANT 10 LF HYDRANT LEG 1 EA. - 6\"/>

480 LF 12\"/>

11.25° HORIZ. BEND

60 LF 24\"/>

16\"/>

2 EA. 22.5° HORIZ. BENDS

16\"/>

16\"/>

16\"/>

16\"/>

45° HORIZ. BEND

2 @ 45° HORIZ. BENDS

45 LF 8\"/>

70 LF 16\"/>

22.5° HORIZ. BEND

2 @ 45° HORIZ. BENDS

11.25° HORIZ. BEND

RELOCATE WATER METER

628 LF 8\"/>

566 LF ABANDON 8\"/>

WL-8

8\"/>

8\"/>

8\"/>

8\"/>