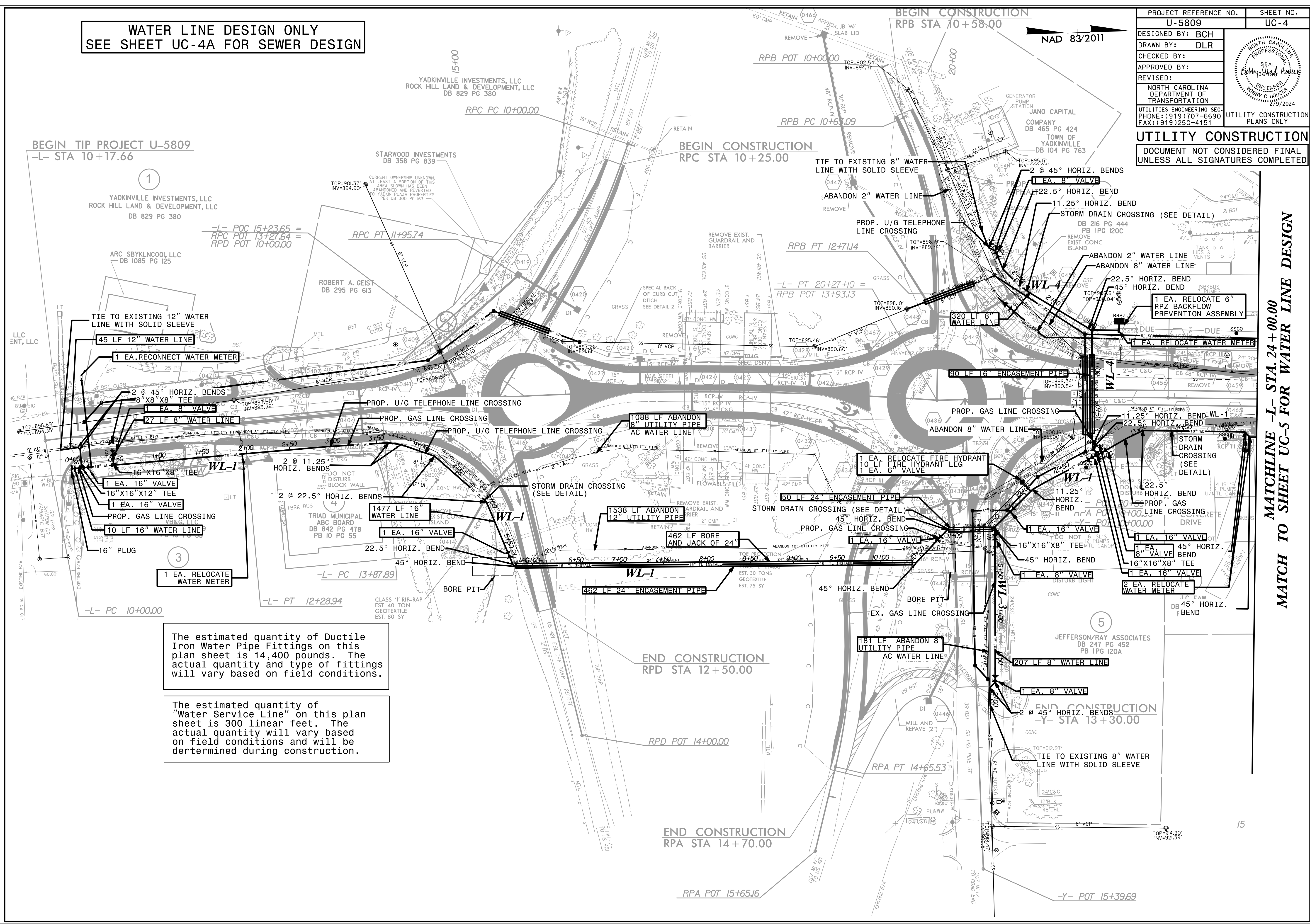


**WATER LINE DESIGN ONLY
SEE SHEET UC-4A FOR SEWER DESIGN**

PROJECT REFERENCE NO. U-5809	SHEET NO. UC-4
DESIGNED BY: BCH	
DRAWN BY: DLR	
CHECKED BY:	
APPROVED BY:	
REVISED:	UTILITY CONSTRUCTION PLANS ONLY
NORTH CAROLINA DEPARTMENT OF TRANSPORTATION UTILITIES ENGINEERING SEC. PHONE: (919) 707-6690 FAX: (919) 250-4151	
UTILITY CONSTRUCTION	
DOCUMENT NOT CONSIDERED FINAL UNLESS ALL SIGNATURES COMPLETED	



BEGIN TIP PROJECT U-5809
-L- STA 10+17.66

BEGIN CONSTRUCTION
RPC STA 10+25.00

END CONSTRUCTION
RPD STA 12+50.00

END CONSTRUCTION
RPA STA 14+70.00

BEGIN CONSTRUCTION
RPA STA 10+58.00

NAD 83/2011

1

3

5

The estimated quantity of Ductile Iron Water Pipe Fittings on this plan sheet is 14,400 pounds. The actual quantity and type of fittings will vary based on field conditions.

The estimated quantity of "Water Service Line" on this plan sheet is 300 linear feet. The actual quantity will vary based on field conditions and will be determined during construction.

MATCHLINE -L- STA. 24+00.00
MATCH TO SHEET UC-5 FOR WATER LINE DESIGN