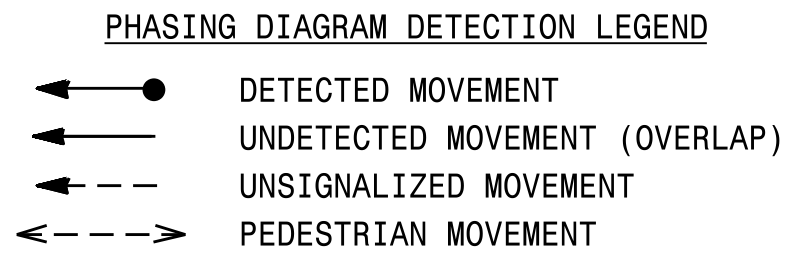
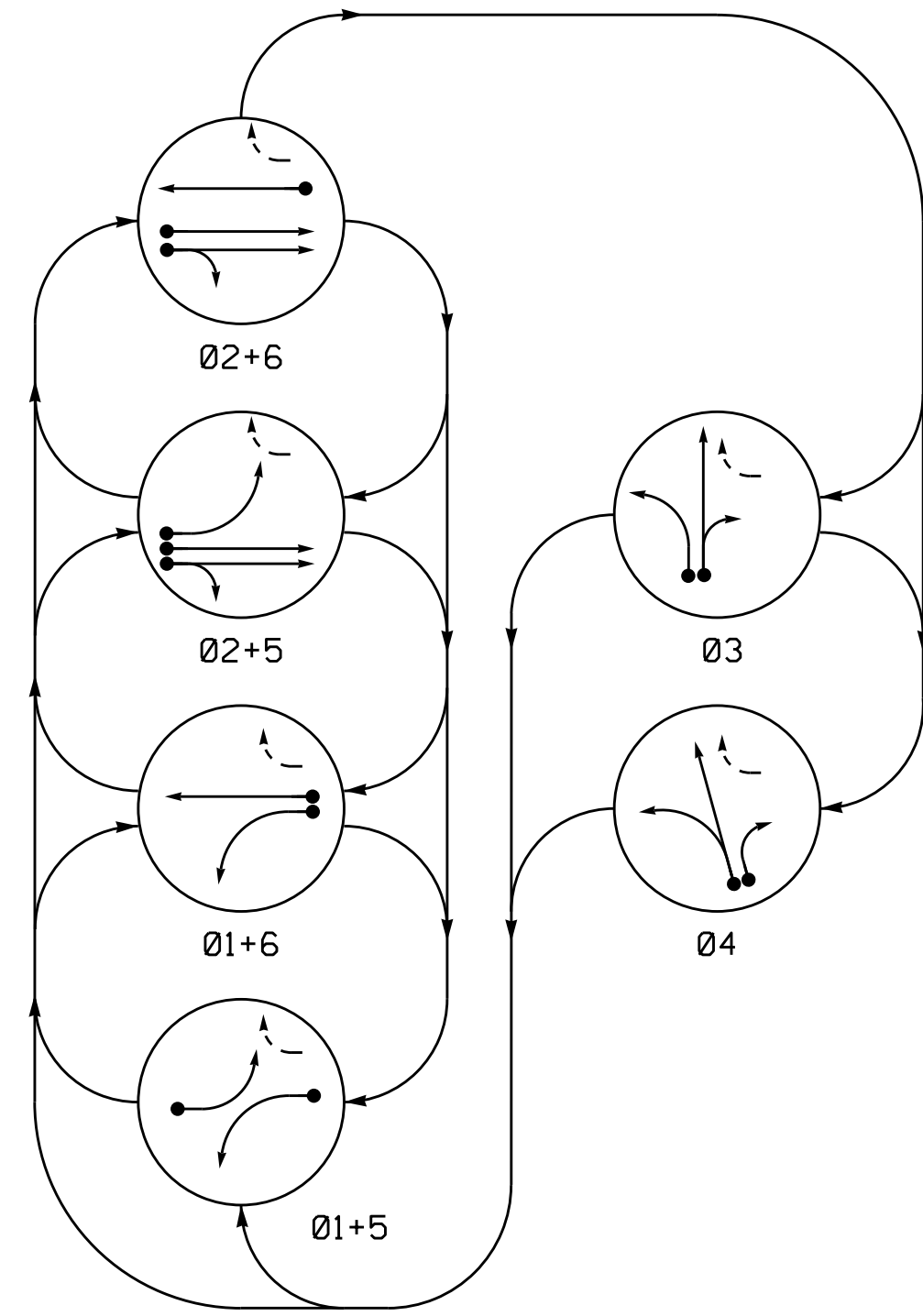
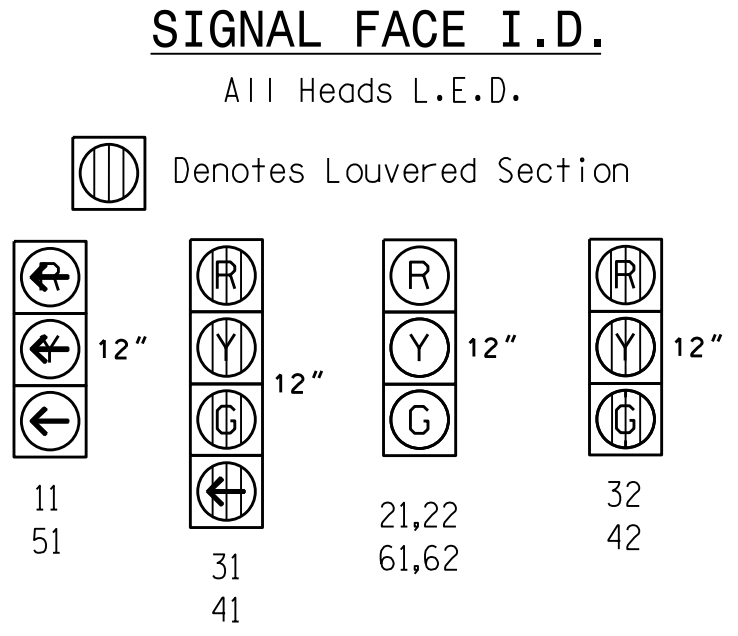


PHASING DIAGRAM



SIGNAL FACE	PHASE					
	Ø1+5	Ø1+6	Ø2+5	Ø2+6	Ø3	Ø4
11	—	—	—	—	—	—
21,22	R	R	G	G	R	R
31	R	R	R	R	G	R
32	R	R	R	R	G	R
41	R	R	R	R	R	G
42	R	R	R	R	R	G
51	—	—	—	—	—	—
61,62	R	G	R	G	R	R



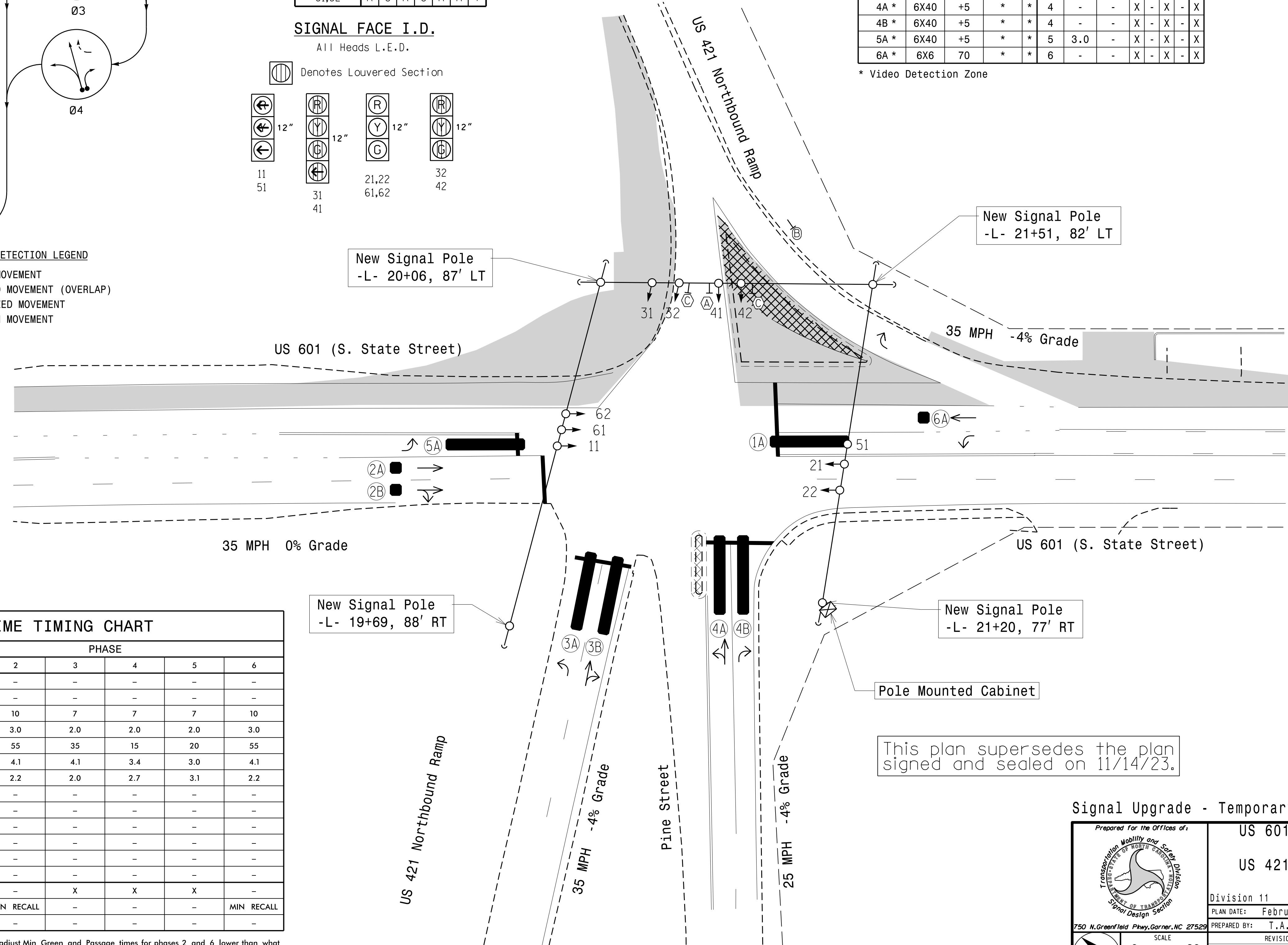
MAXTIME DETECTOR INSTALLATION CHART											
DETECTOR						PROGRAMMING					
LOOP	SIZE (FT)	DISTANCE FROM STOPBAR (FT)	TURNS	NEW LOOP	CALL PHASE	DELAY TIME	EXTEND TIME	EXTEND	ADDED INITIAL CALL	DELAY DURING GREEN	NEW CARD
1A*	6X40	+5	*	*	1	-	-	X	-	X	X
2A*	6X6	70	*	*	2	-	-	X	-	X	X
2B*	6X6	70	*	*	2	-	-	X	-	X	X
3A*	6X40	+5	*	*	3	-	-	X	-	X	X
3B*	6X40	+5	*	*	3	-	-	X	-	X	X
4A*	6X40	+5	*	*	4	-	-	X	-	X	X
4B*	6X40	+5	*	*	4	-	-	X	-	X	X
5A*	6X40	+5	*	*	5	3.0	-	X	-	X	X
6A*	6X6	70	*	*	6	-	-	X	-	X	X

* Video Detection Zone

6 Phase Fully Actuated (US 601 (Yadkinville) TBC-System 1)

NOTES

- Refer to "Roadway Standard Drawings NCDOT" dated January 2024 and "Standard Specifications for Roads and Structures" dated January 2024.
- Do not program signal for late night flashing operation unless otherwise directed by the Engineer.
- Phase 1 and/or phase 5 may be lagged.
- The order of phase 3 and phase 4 may be reversed.
- Set all detector units to presence mode.
- Pavement markings are existing.
- This intersection uses video detection. Install detectors according to the manufacturer's instructions to achieve the desired detection.
- Maximum times shown in timing chart are for free-run operation only. Coordinated signal system timing values supersede these values.
- Closed loop system data: Controller Asset #0030.



FEATURE	PHASE					
	1	2	3	4	5	6
Walk *	-	-	-	-	-	-
Ped Clear	-	-	-	-	-	-
Min Green *	7	10	7	7	7	10
Passage *	2.0	3.0	2.0	2.0	2.0	3.0
Max 1 *	25	55	35	15	20	55
Yellow Change	3.0	4.1	4.1	3.4	3.0	4.1
Red Clear	2.1	2.2	2.0	2.7	3.1	2.2
Added Initial *	-	-	-	-	-	-
Maximum Initial *	-	-	-	-	-	-
Time Before Reduction *	-	-	-	-	-	-
Time To Reduce *	-	-	-	-	-	-
Minimum Gap	-	-	-	-	-	-
Advance Walk	-	-	-	-	-	-
Non Lock Detector	X	-	X	X	X	-
Vehicle Recall	-	MIN RECALL	-	-	-	MIN RECALL
Dual Entry	-	-	-	-	-	-

* These values may be field adjusted. Do not adjust Min Green and Passage times for phases 2 and 6 lower than what is shown. Min Green for all other phases should not be lower than 4 seconds.

LEGEND

PROPOSED	EXISTING

Signal Upgrade - Temporary Design 1 - Phase I

US 601 (S. State Street)
at
US 421 Northbound Ramps/
Pine Street

Division 11 Yadkin County Yadkinville

PLAN DATE: February 2024 REVIEWED BY: R.N. Zinser

PREPARED BY: T.A. Kenion REVIEWED BY:

DOCUMENT NOT CONSIDERED FINAL UNLESS ALL SIGNATURES COMPLETED

REVISIONS	INIT.	DATE

03/04/2024
SIG. INVENTORY NO. II-0030TI