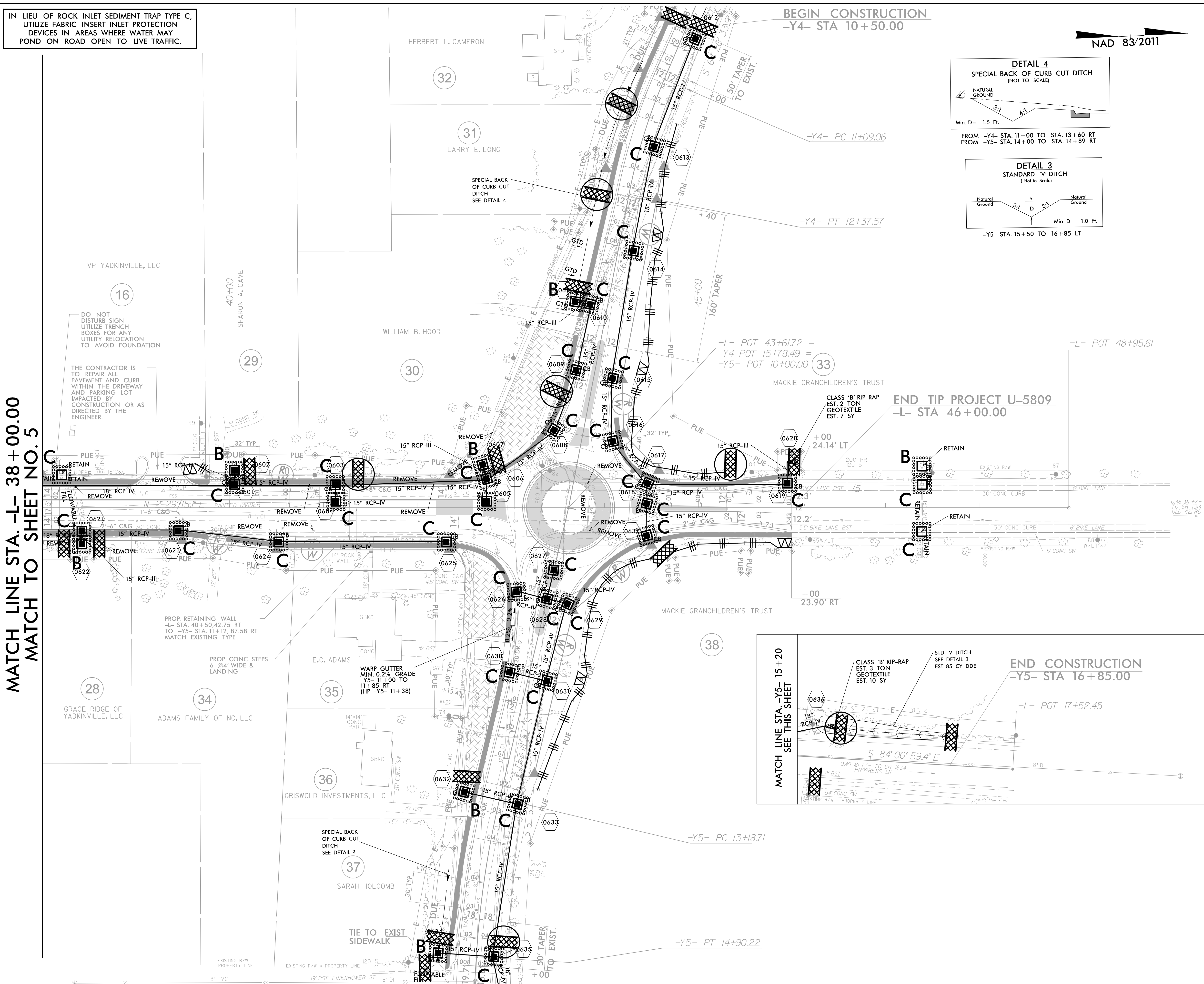


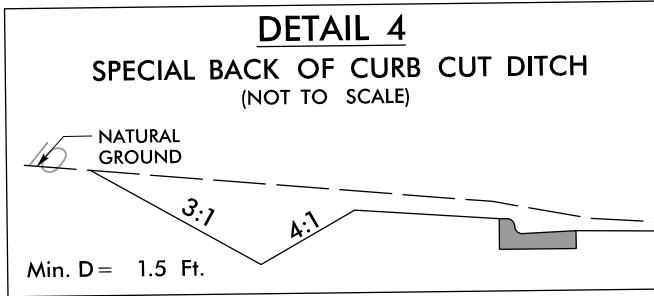
IN LIEU OF ROCK INLET SEDIMENT TRAP TYPE C, UTILIZE FABRIC INSERT INLET PROTECTION DEVICES IN AREAS WHERE WATER MAY POND ON ROAD OPEN TO LIVE TRAFFIC.

MATCH LINE STA. -L- 38 + 00.00
MATCH TO SHEET NO. 5

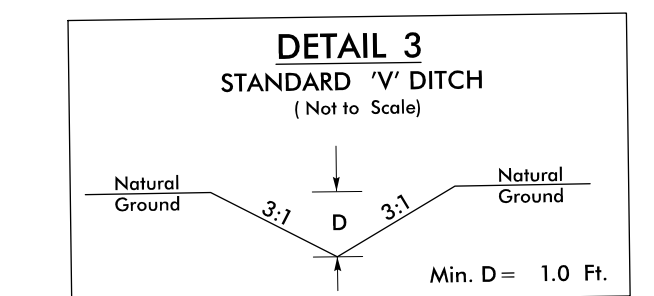


BEGIN CONSTRUCTION
-Y4- STA 10 + 50.00

NAD 83/2011

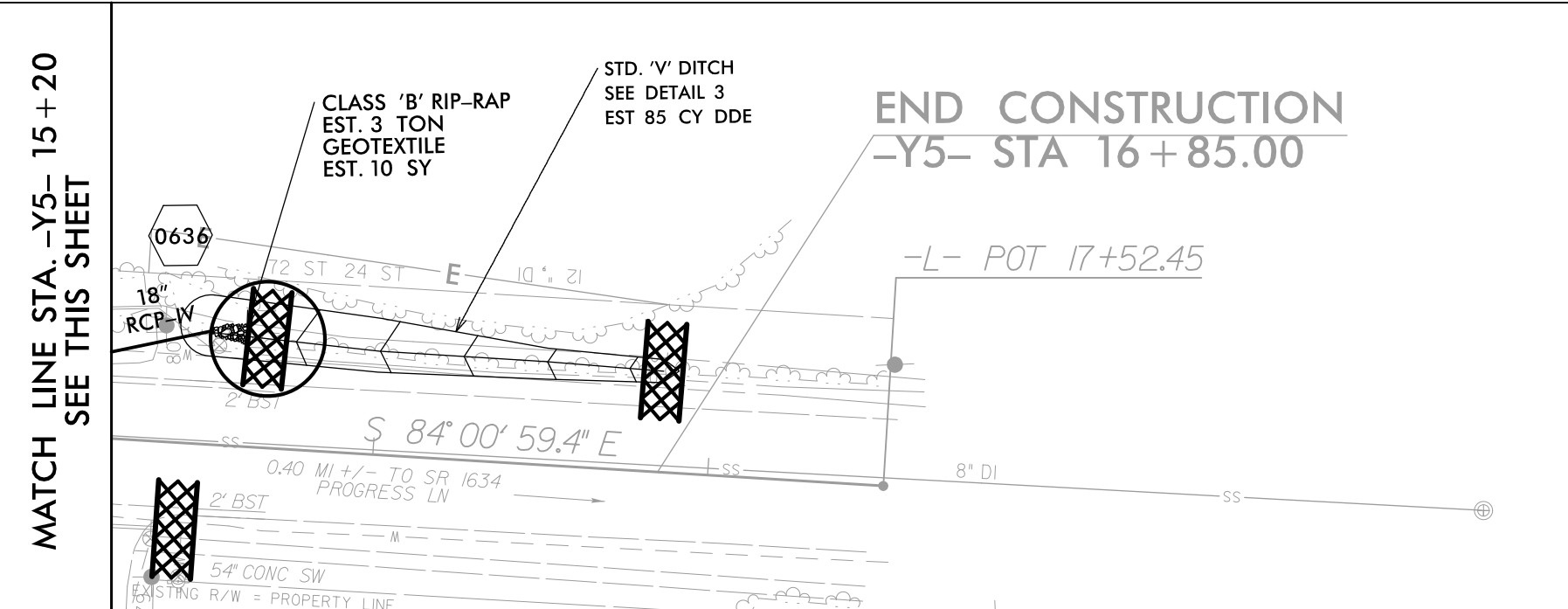


FROM -Y4- STA. 11+00 TO STA. 13+60 RT
FROM -Y5- STA. 14+00 TO STA. 14+89 RT



-Y5- STA. 15+50 TO 16+85 LT

END TIP PROJECT U-5809
-L- STA 46 + 00.00



MATCH LINE STA. -Y5- 15 + 20
SEE THIS SHEET

PROJECT REFERENCE NO.	SHEET NO.
U-5809	EC-09/CONST.6
RW SHEET NO.	
ROADWAY DESIGN ENGINEER	HYDRAULICS ENGINEER
TGS ENGINEERS 201 W. MARION ST. STE 200 SHELBY, NC 28150 PH (704) 476-0003 CORP. LICENSE NO.: C-0275	

DO NOT DISTURB SIGN UTILIZE TRENCH BOXES FOR ANY UTILITY RELOCATION TO AVOID FOUNDATION

THE CONTRACTOR IS TO REPAIR ALL PAVEMENT AND CURB WITHIN THE DRIVEWAY AND PARKING LOT IMPACTED BY CONSTRUCTION OR AS DIRECTED BY THE ENGINEER.

PROP. RETAINING WALL
-L- STA. 40+30.42.75 RT
TO -Y5- STA. 11+12.87.58 RT
MATCH EXISTING TYPE

PROP. CONC. STEPS
6 @ 4" WIDE & LANDING

WARP GUTTER
MIN. 0.2% GRADE
-Y5- 11+00 TO
11+85 RT
(HP -Y5- 11+38)

SPECIAL BACK OF CURB CUT DITCH
SEE DETAIL 4

TIE TO EXIST SIDEWALK

-Y5- PT 14+90.22

+00 23.90' RT

+00 24.14' LT

-L- POT 48+95.61

-L- POT 43+61.72 =
-Y4 POT 15+78.49 =
-Y5- POT 10+00.00

-Y4- PT 12+37.57

-Y4- PC 11+09.06

-Y5- PC 13+18.71

BEGIN CONSTRUCTION
-Y4- STA 10 + 50.00

END CONSTRUCTION
-Y5- STA 16 + 85.00

END TIP PROJECT U-5809
-L- STA 46 + 00.00

MATCH LINE STA. -Y5- 15 + 20
SEE THIS SHEET

MATCH LINE STA. -L- 38 + 00.00
MATCH TO SHEET NO. 5