


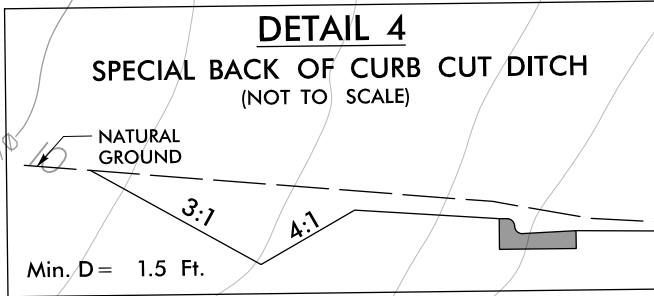
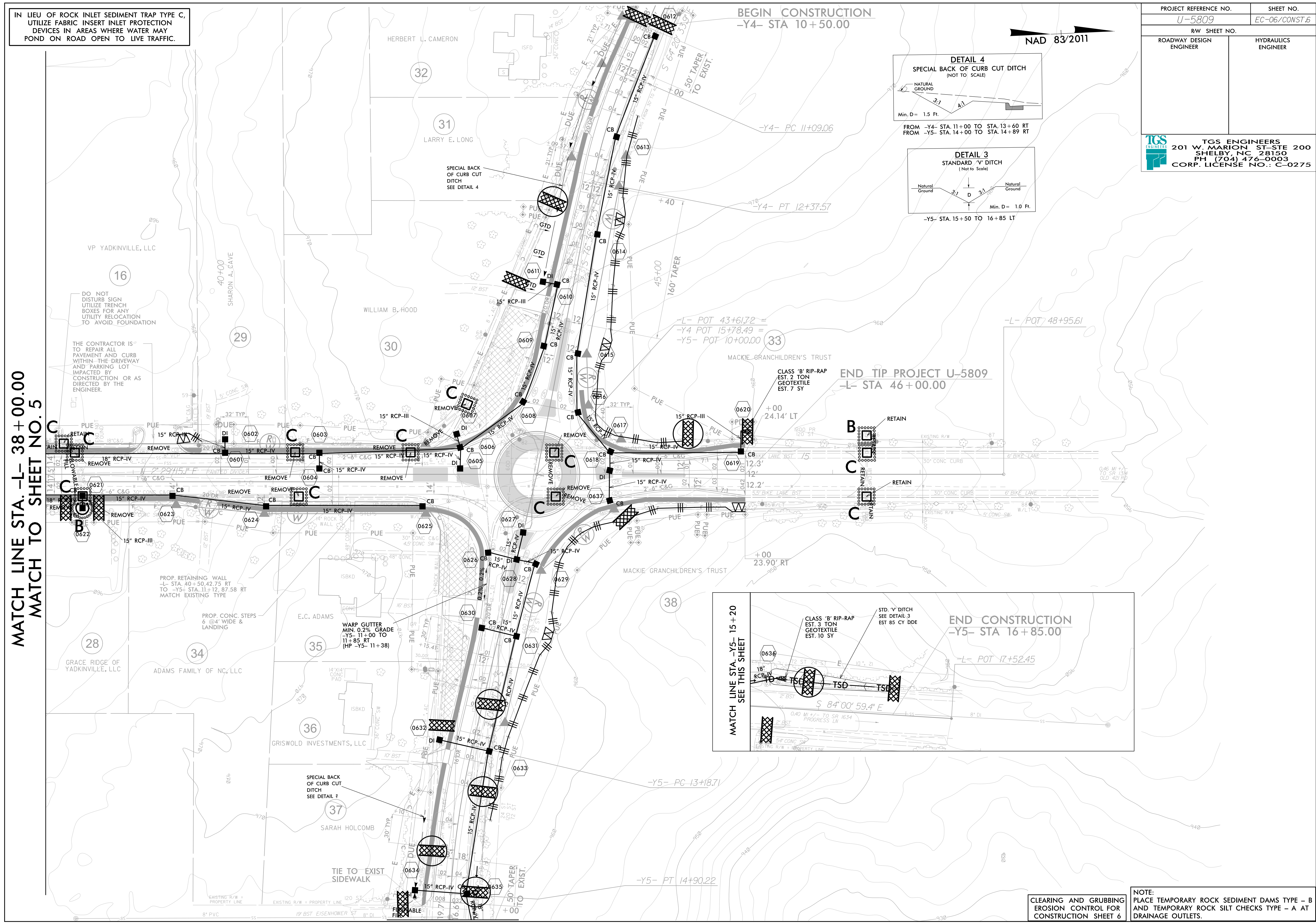
IN LIEU OF ROCK INLET SEDIMENT TRAP TYPE C, UTILIZE FABRIC INSERT INLET PROTECTION DEVICES IN AREAS WHERE WATER MAY POND ON ROAD OPEN TO LIVE TRAFFIC.

BEGIN CONSTRUCTION
-Y4- STA 10+50.00

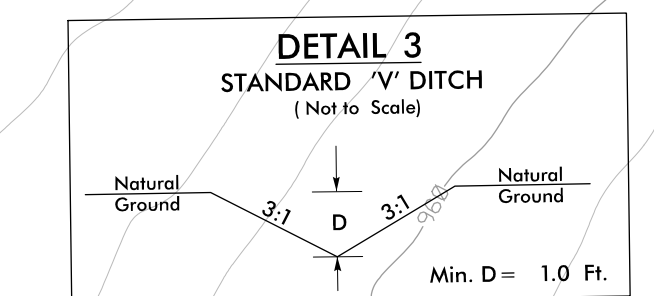
NAD 83/2011

PROJECT REFERENCE NO. <i>U-5809</i>	SHEET NO. <i>EC-06/CONST.6</i>
RW SHEET NO.	
ROADWAY DESIGN ENGINEER	HYDRAULICS ENGINEER
 TGS ENGINEERS 201 W. MARION ST-STE 200 SHELBY, NC 28150 PH (704) 476-0003 CORP. LICENSE NO.: C-0275	

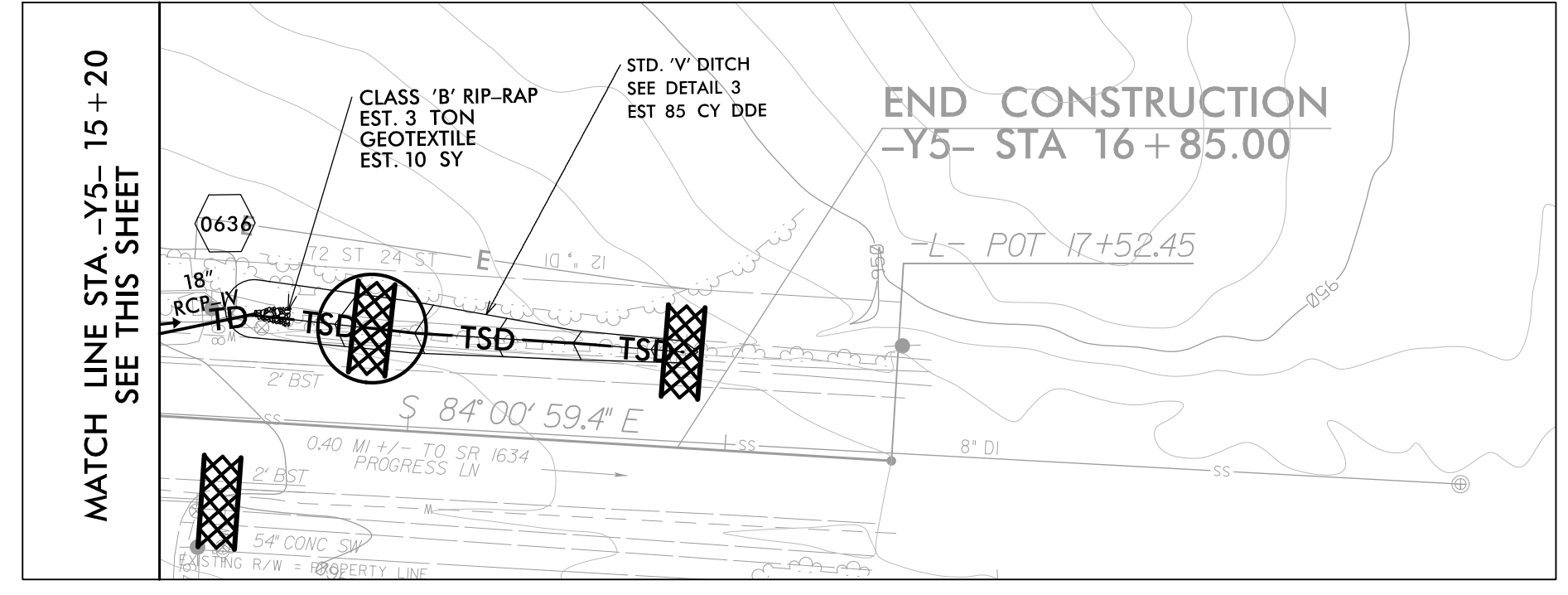
MATCH LINE STA. -L- 38+00.00
MATCH TO SHEET NO. 5



FROM -Y4- STA. 11+00 TO STA. 13+60 RT
FROM -Y5- STA. 14+00 TO STA. 14+89 RT



-Y5- STA. 15+50 TO 16+85 LT



MATCH LINE STA. -Y5- 15+20
SEE THIS SHEET

END CONSTRUCTION
-Y5- STA 16+85.00

NOTE:
CLEARING AND GRUBBING EROSION CONTROL FOR CONSTRUCTION SHEET 6
PLACE TEMPORARY ROCK SEDIMENT DAMS TYPE - B AND TEMPORARY ROCK SILT CHECKS TYPE - A AT DRAINAGE OUTLETS.