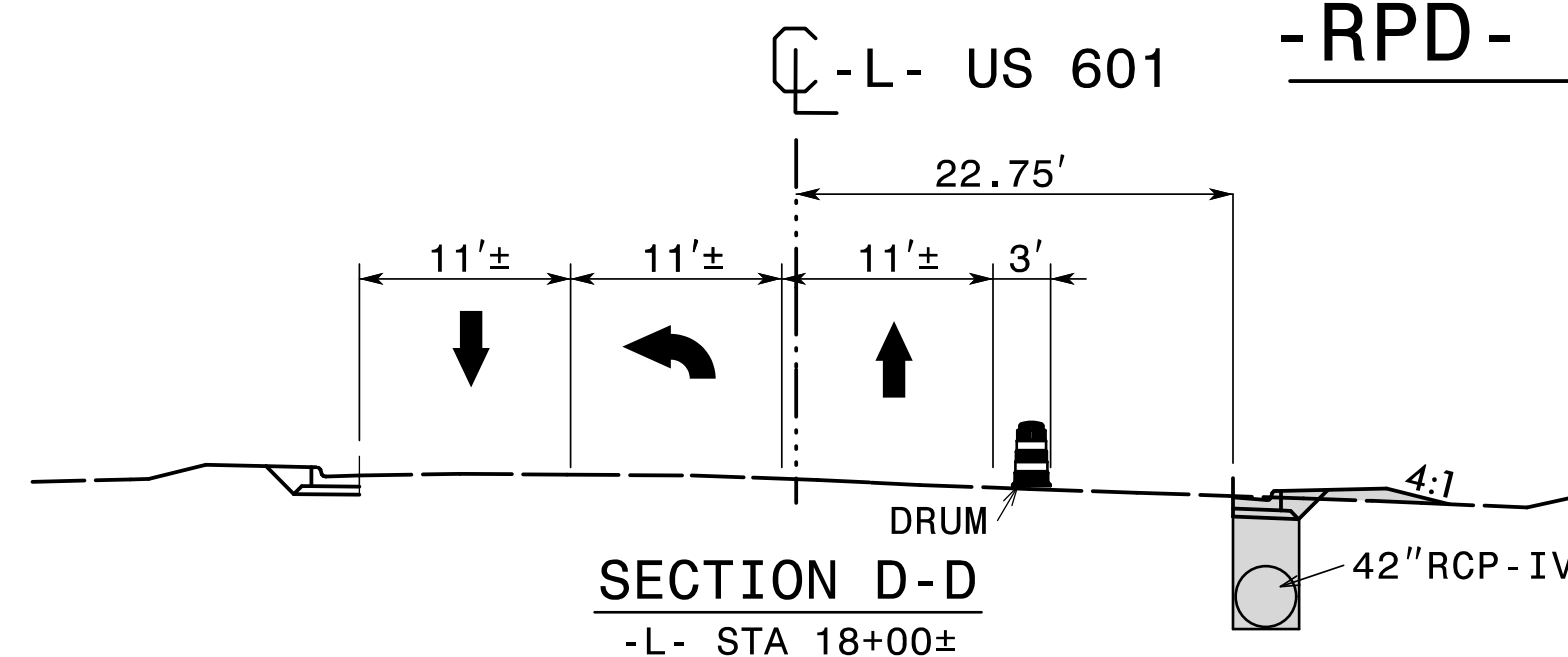
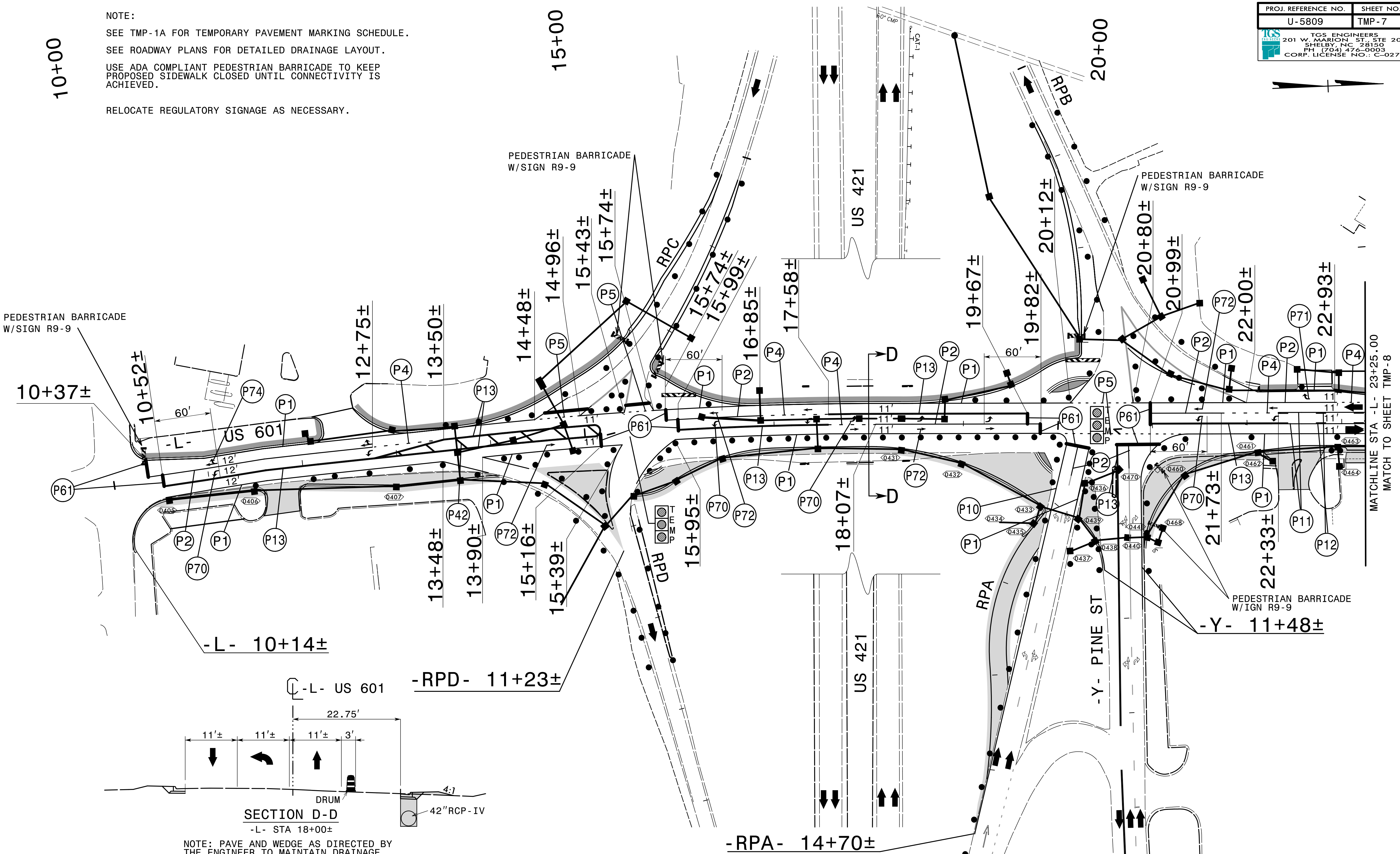
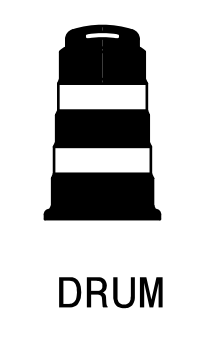
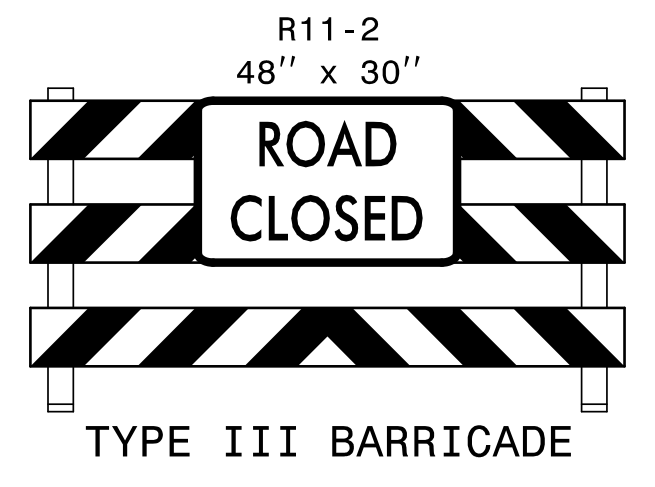
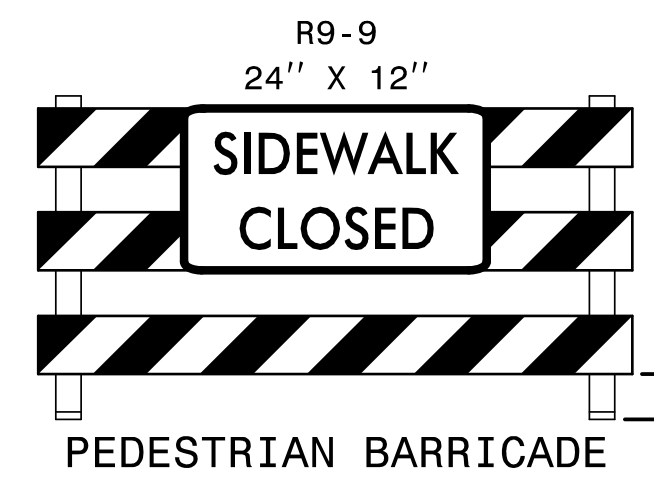


NOTE:  
SEE TMP-1A FOR TEMPORARY PAVEMENT MARKING SCHEDULE.  
SEE ROADWAY PLANS FOR DETAILED DRAINAGE LAYOUT.  
USE ADA COMPLIANT PEDESTRIAN BARRICADE TO KEEP PROPOSED SIDEWALK CLOSED UNTIL CONNECTIVITY IS ACHIEVED.  
RELOCATE REGULATORY SIGNAGE AS NECESSARY.



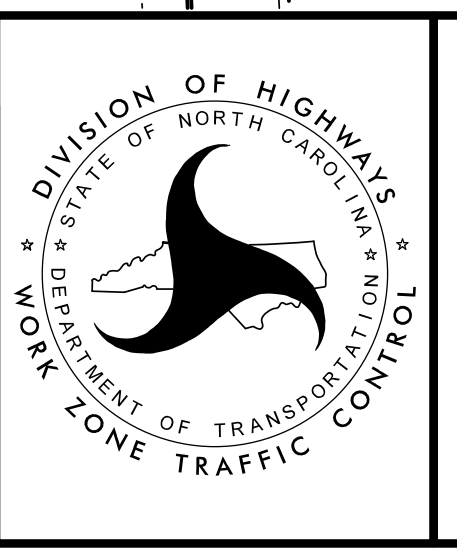
NOTE: PAVE AND WEDGE AS DIRECTED BY THE ENGINEER TO MAINTAIN DRAINAGE AND MITIGATE PAVING EDGE DROP-OFFS.



APPROVED: *Don A. Parker*  
DATE: 3/27/2024

SEAL  
NORTH CAROLINA PROFESSIONAL ENGINEER  
SEAL 043251  
DON A. PARKER

DOCUMENT NOT CONSIDERED FINAL UNLESS ALL SIGNATURES COMPLETED



TEMPORARY TRAFFIC CONTROL PHASE II

3/26/2024 11:58:09 AM Traffic\TrafficControl\TCPU-U-5809-TC-TMP-07.dgn User:jsmevin