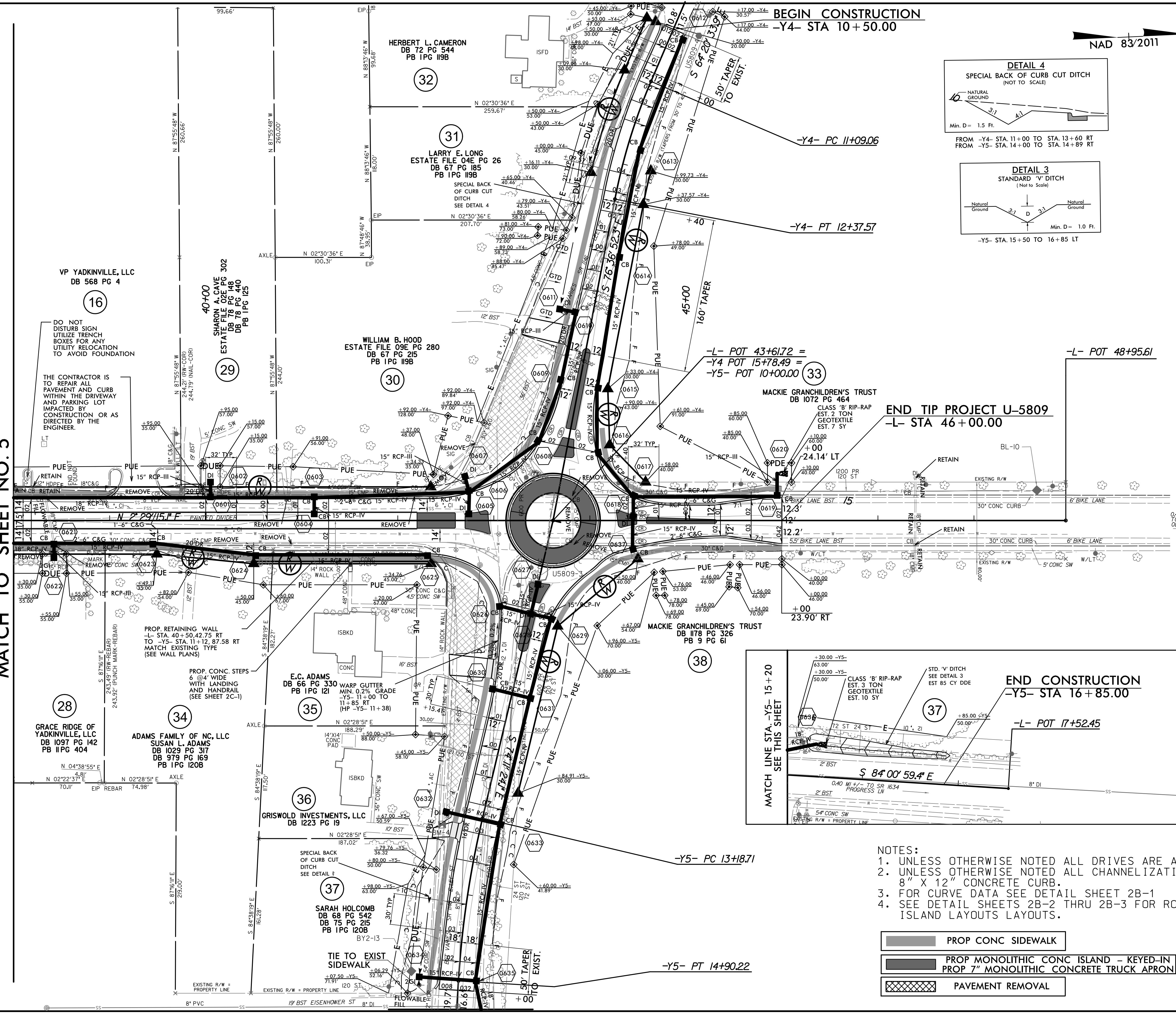


8/17/24

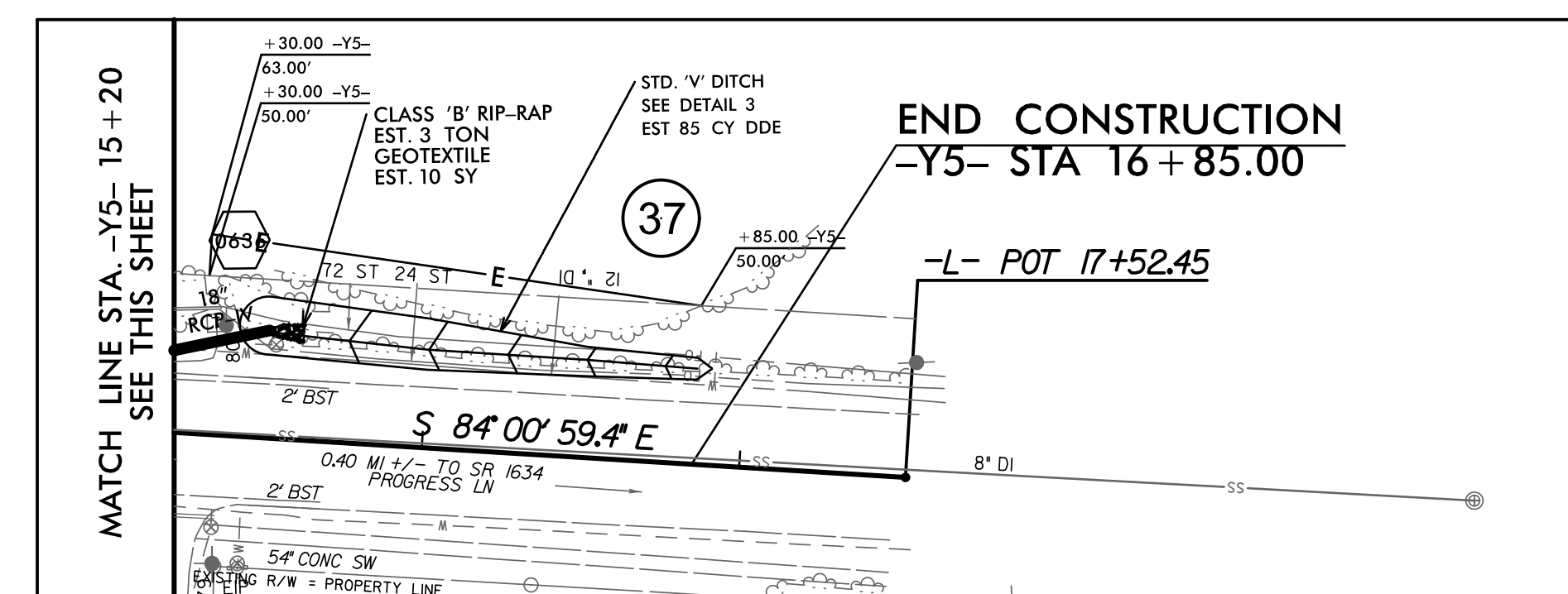
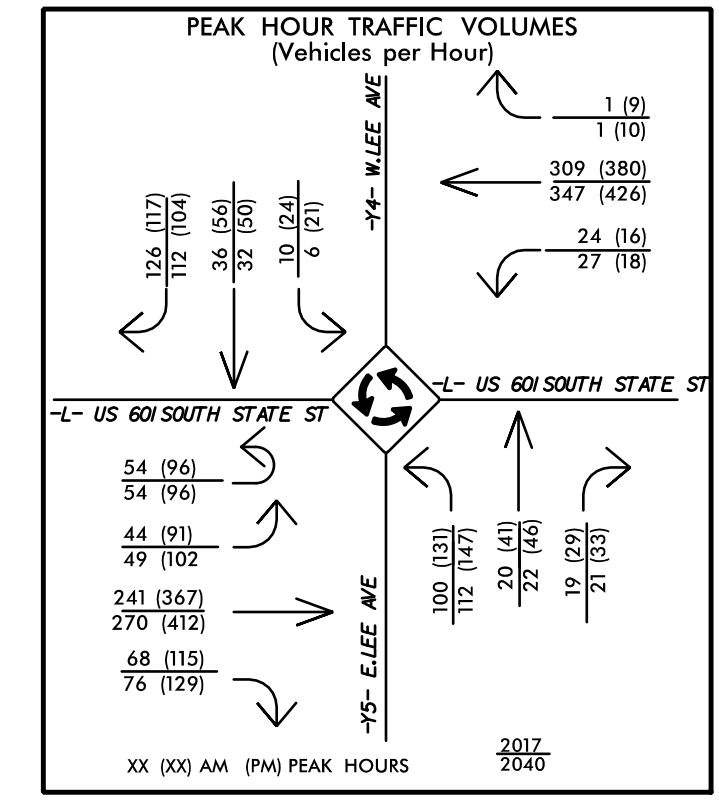
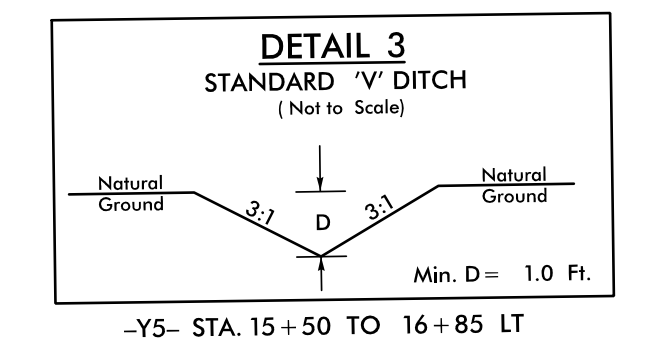
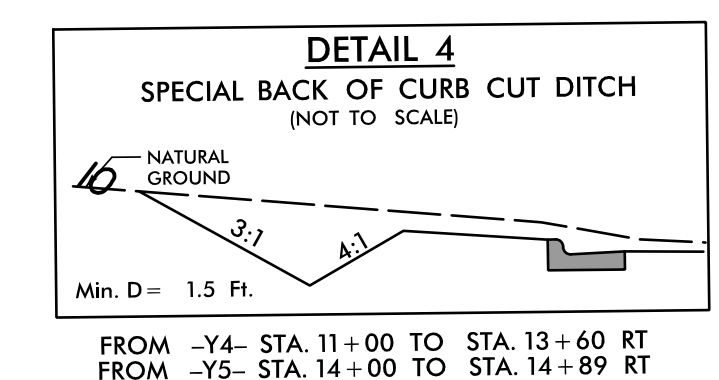
REVISIONS

MATCH LINE STA. -L- 38+00.00
MATCH TO SHEET NO. 5

3/21/2024
X:\NCDOT\U-5809\Roadway\Proj\U-5809_1.Rdy_psh46.dgn



NAD 83/2011



- NOTES:
- UNLESS OTHERWISE NOTED ALL DRIVES ARE ASPHALT DRIVES.
 - UNLESS OTHERWISE NOTED ALL CHANNELIZATION CURB IS 8" X 12" CONCRETE CURB.
 - FOR CURVE DATA SEE DETAIL SHEET 2B-1
 - SEE DETAIL SHEETS 2B-2 THRU 2B-3 FOR ROUNDABOUT & CONCRETE ISLAND LAYOUTS.

- PROP CONC SIDEWALK
- PROP MONOLITHIC CONC ISLAND - KEYED-IN PROP 7" MONOLITHIC CONCRETE TRUCK APRON
- PAVEMENT REMOVAL

FOR -L- PROFILE, SEE SHEET NO. 8
 FOR -Y4- PROFILE, SEE SHEET NO. 10
 FOR -Y5- PROFILE, SEE SHEET NO. 10

PROJECT REFERENCE NO. U-5809	SHEET NO. 6
RW SHEET NO.	
ROADWAY DESIGN ENGINEER 	HYDRAULICS ENGINEER
DOCUMENT NOT CONSIDERED FINAL UNLESS ALL SIGNATURES COMPLETED	
 TGS ENGINEERS 201 W. MARION ST, STE 200 SHELBY, NC 28150 PH (704) 476-0003 CORP. LICENSE NO.: C-0275	