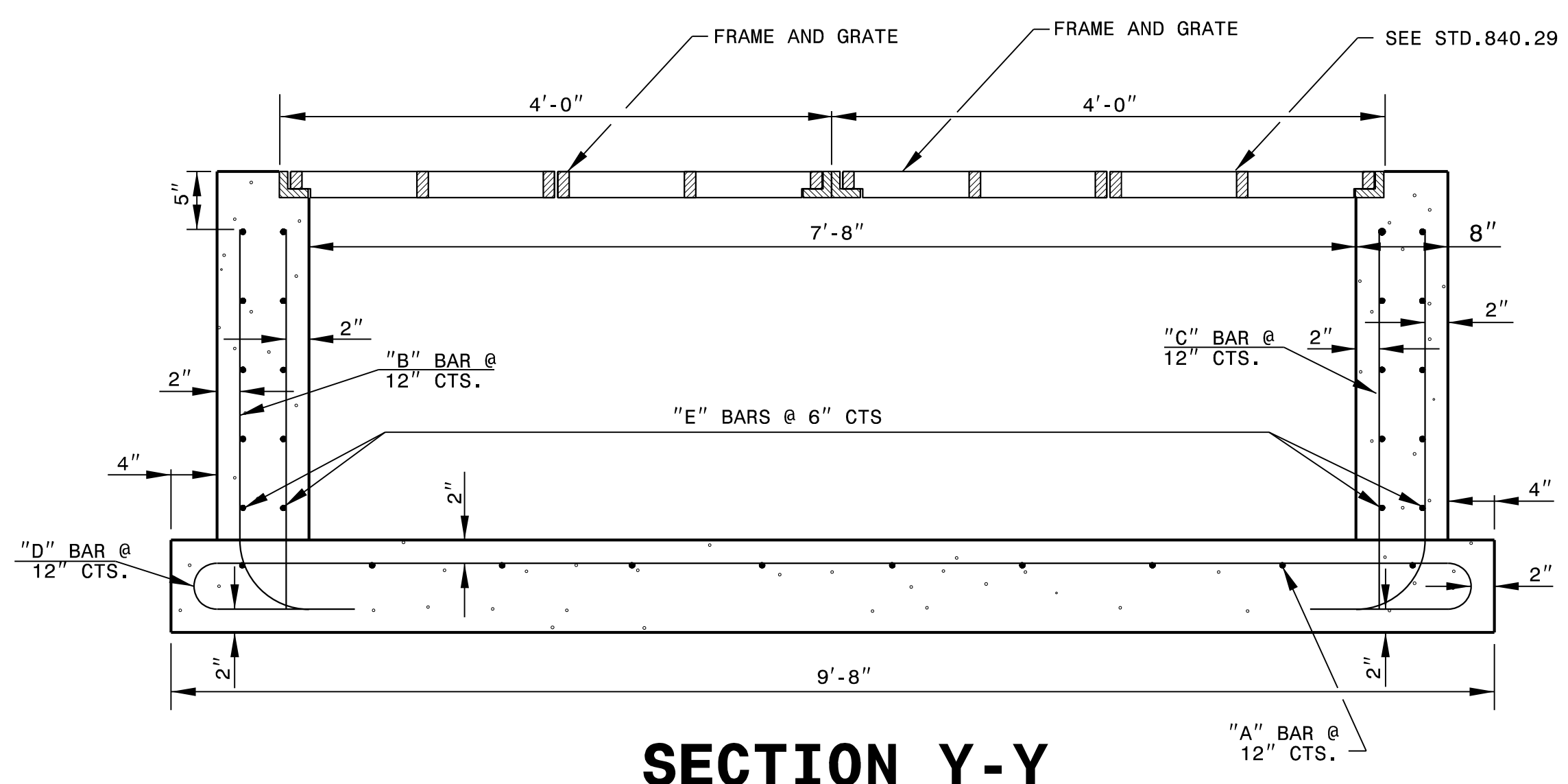


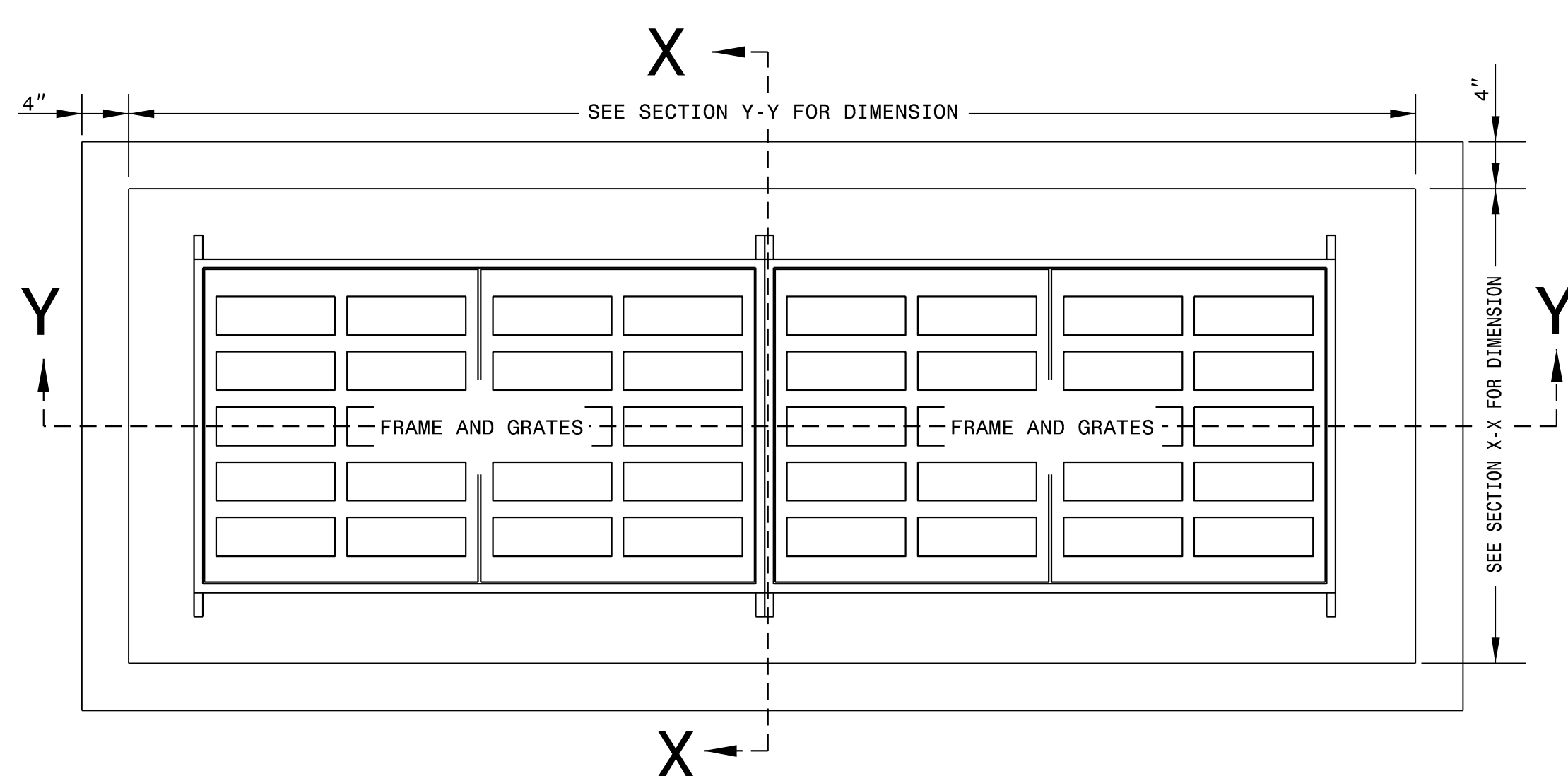
**SECTION X-X**



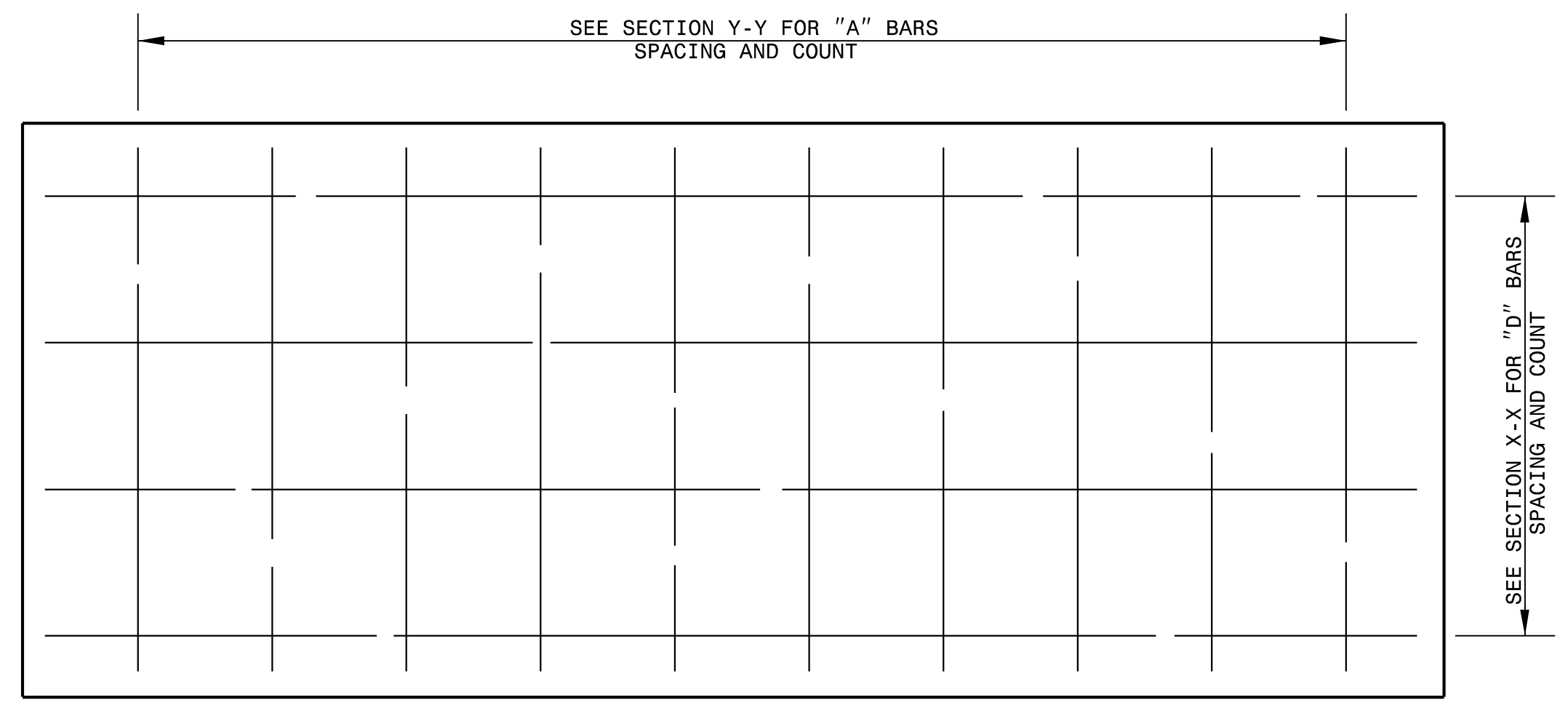
**SECTION Y-Y**

**GENERAL NOTES:**

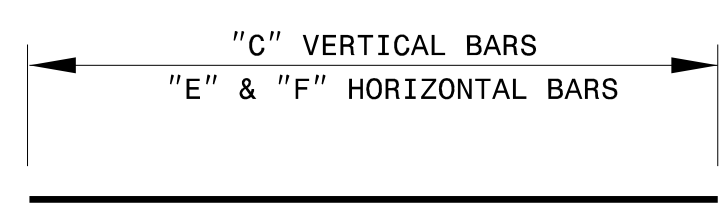
- ALL EXPOSED CONCRETE CORNERS SHALL BE CHAMFERED 1".
- FORMS SHALL BE USED TO CONSTRUCT THE BOTTOM SLAB.
- IF PIPES ARE SET IN THE BASE SHALL FOLLOW CONSTRUCTION PROCEDURE SHOWN BY STD. DWG. 840.00.
- PRECAST UNITS MADE OF CLASS "AA" CONCRETE MAY BE USED IN LIEU OF BRICK MASONRY CONSTRUCTION.
- REINFORCING STEEL COST SHALL BE INCLUSIVE IN THE UNIT OR PER METER BID PRICE FOR "MASONRY DRAINAGE STRUCTURE".
- REFERENCE STD. DWG. 840.25 FOR FRAME ANCHORAGE.
- DROP INLETS OVER 3'-6" DEEP SHALL BE PROVIDED WITH STEPS AS DIRECTED BY STD. DWG. 840.66.
- FRAME AND GRATES SHALL BE SEPARATE CONTRACT ITEM.
- HORIZONTAL AND VERTICAL DIMENSION MAY BE ADJUSTED AS THE FIELD CONDITIONS AND/OR ALTERNATE DESIGN REQUIRE.
- MAXIMUM HEIGHT FOR THIS STRUCTURE SHALL BE 15'.
- ALL ADJUSTMENTS ARE TO BE MADE AS DIRECTED BY THE ENGINEER.
- DEPTH OF STEEL GRATE WILL REQUIRE DEEPER SEAT ALONG SHORT WALLS.



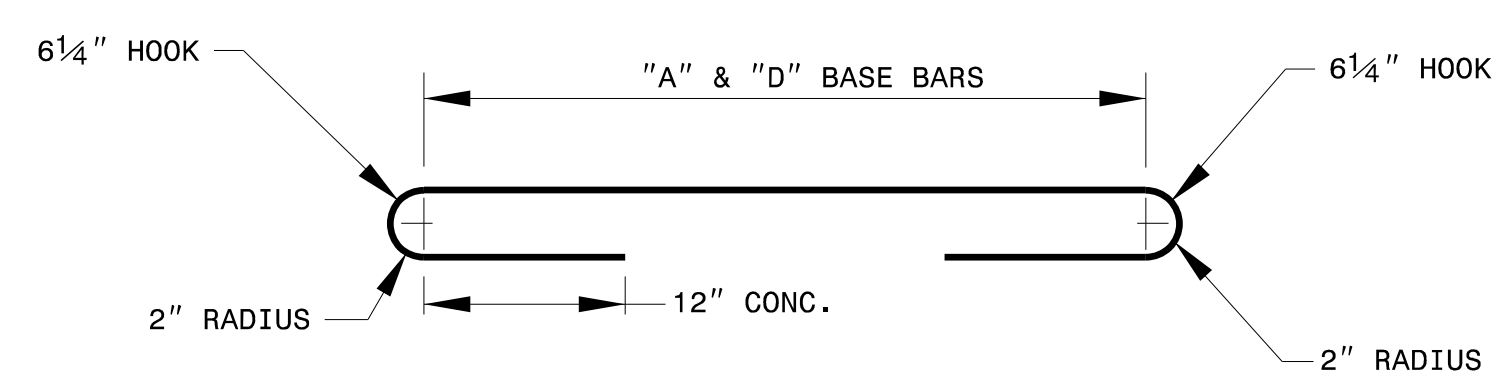
**PLAN**



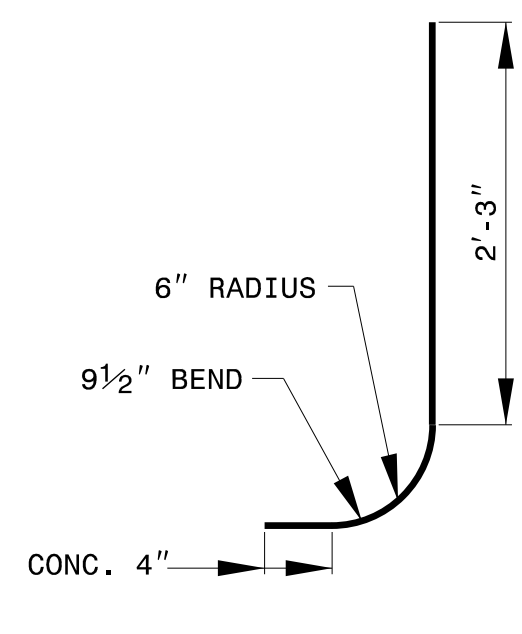
**PLAN OF BASE**



**STRAIGHT BARS**

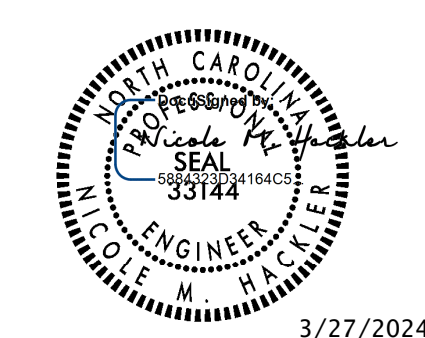


**BASE BARS**



**CORNER BARS**

BILL OF MATERIALS				
COMMON		CONCRETE ALT.		
BAR	SIZE	LENGTH	QUANTITY	WEIGHT
A	#5	6'-4 1/2"	10	67
B	#5	3'-4 1/2"	24	84
C	#5	2'-8"	24	67
D	#5	12'-6"	4	22
E	#5	3'-0"	20	62
F	#5	8'-6"	20	179
REINF. STEEL (TOTAL WEIGHT LBS.)				481
CONCRETE IN BASE (CU.YDS.)				0.93
CONCRETE IN WALLS (CU.YDS.)				1.42
CONCRETE TOTAL (CU.YDS.)				2.35
CONC. CU.YDS. PER WALL/FOOT OF HEIGHT				1.74
LBS. OF REINF. STEEL IN WALL/FOOT OF HEIGHT				494



3/27/2024

**CONTRACT STANDARDS AND DEVELOPMENT UNIT**  
Office 919-707-6950 FAX 919-250-4119

**TRAFFIC BEARING 4GI**

ORIGINAL BY: \_\_\_\_\_ DATE: \_\_\_\_\_  
 MODIFIED BY: rnbritt DATE: 6-15-16  
 CHECKED BY: \_\_\_\_\_ DATE: \_\_\_\_\_  
 FILE SPEC: details/nbritt/english/urban./u2810ctb4gi.dgn

DOCUMENT NOT CONSIDERED FINAL UNLESS ALL SIGNATURES COMPLETED