

NOTES

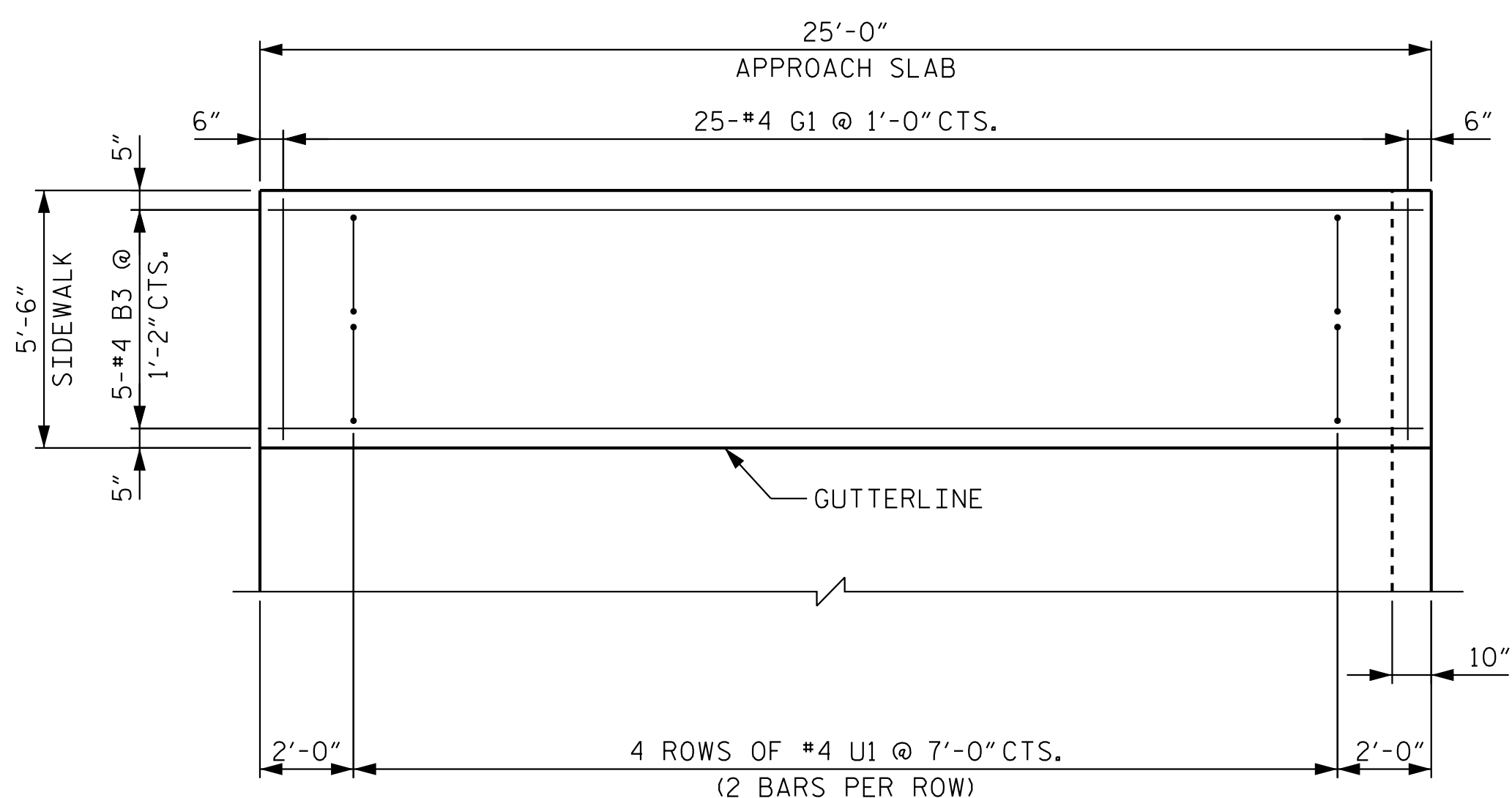
ALL REINFORCING STEEL IN THE SIDEWALK SHALL BE EPOXY COATED.

GROOVED CONTRACTION JOINTS, 1/2" IN DEPTH, SHALL BE TOOLED IN ALL EXPOSED FACES OF THE SIDEWALK IN ACCORDANCE WITH ARTICLE 825-10(B) OF THE STANDARD SPECIFICATIONS. THE CONTRACTION JOINTS SHALL BE LOCATED AT A SPACING OF 8 FEET TO 10 FEET BETWEEN EXPANSION JOINTS. NO CONTRACTION JOINT WILL BE REQUIRED IN SEGMENTS LESS THAN 10 FEET IN LENGTH.

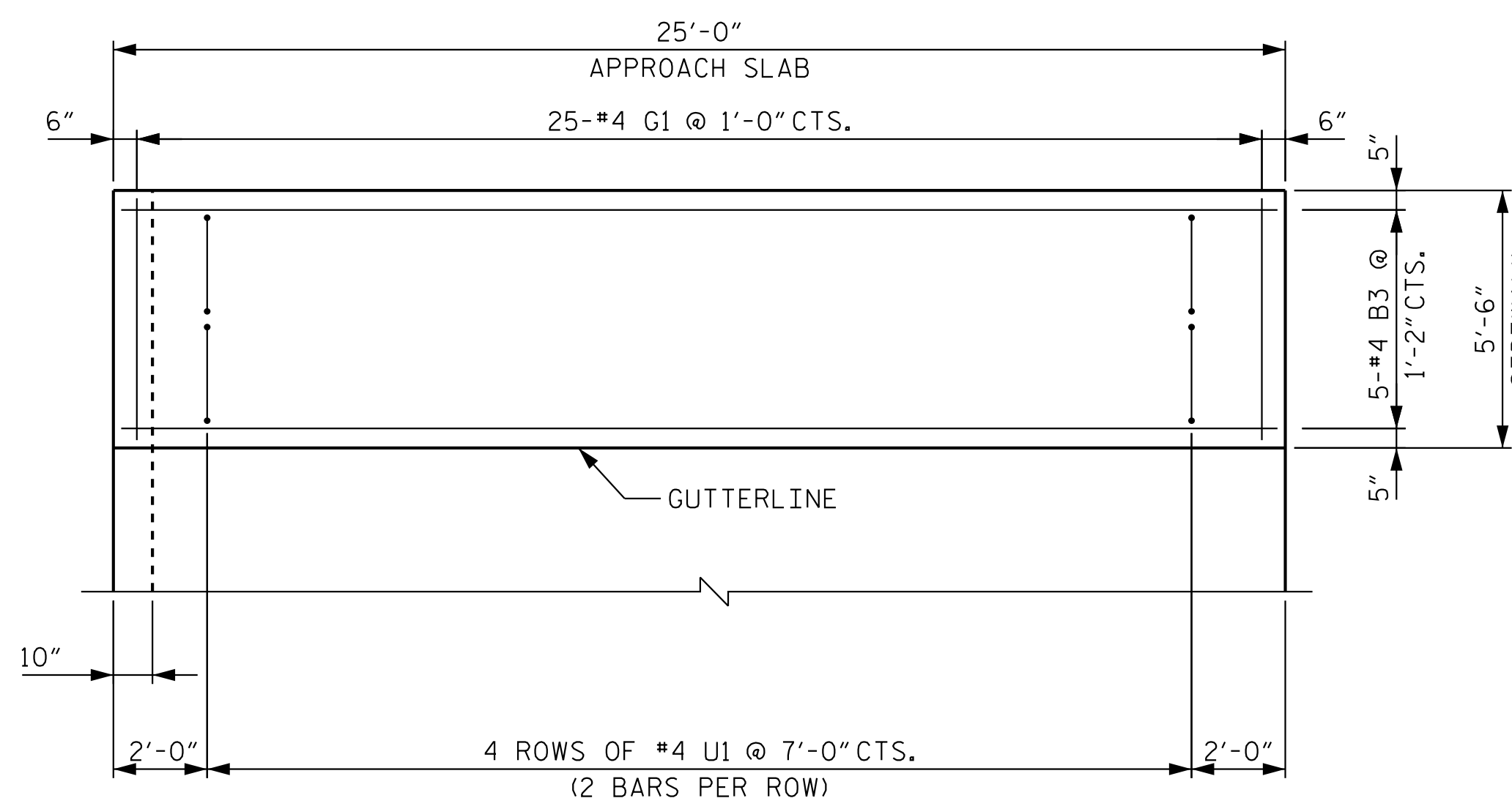
* #4 U1 MAY BE PUSHED INTO GREEN CONCRETE AFTER THE APPROACH SLAB HAS BEEN SCREEDDED OFF.

THE SIDEWALK ON EACH APPROACH SLAB SHALL NOT BE CAST UNTIL ALL APPROACH SLAB CONCRETE HAS BEEN CAST AND REACHED A MINIMUM OF 3,000 PSI.

NO SEPARATE MEASUREMENT OR PAYMENT WILL BE MADE FOR MATERIALS OR LABOR REQUIRED TO CONSTRUCT THE SIDEWALK. THE ENTIRE COST OF THIS WORK SHALL BE INCLUDED IN THE LUMP SUM PRICE BID FOR BRIDGE APPROACH SLABS.



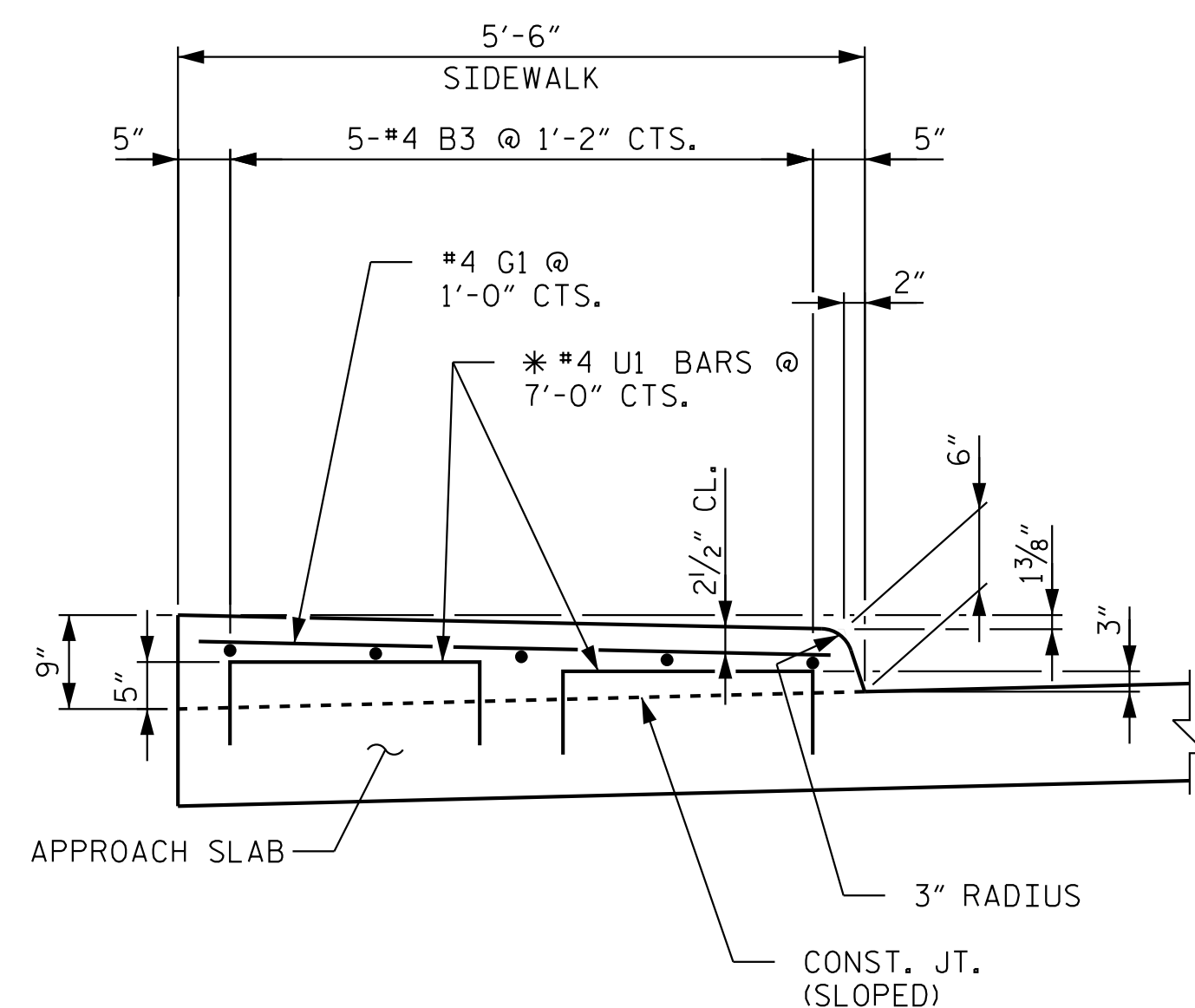
PLAN @ END BENT 1



PLAN @ END BENT 2

SIDEWALK DETAILS

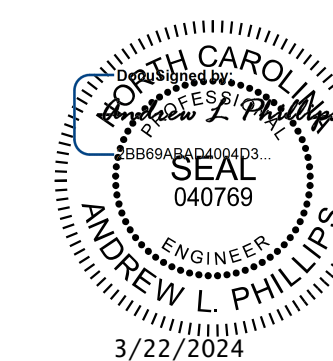
(LEFT SIDE SHOWN, RIGHT SIDE SIMILAR)



SECTION THRU SIDEWALK

PROJECT NO. P-5720
WAKE COUNTY
 STATION: 32+23.01 -L-

SHEET 2 OF 2



Kimley»Horn

421 Fayetteville Street, Suite 600
 Raleigh, NC 27601-1772
 Phone (919) 677-2000 NC LICENSE # F-0102

STATE OF NORTH CAROLINA
 DEPARTMENT OF TRANSPORTATION
 RALEIGH
 STANDARD
 BRIDGE APPROACH SLAB
 DETAILS

REVISIONS					SHEET NO.
NO.	BY:	DATE:	NO.	BY:	DATE:
1			3		
2			4		
					TOTAL SHEETS
					33

**DOCUMENT NOT CONSIDERED FINAL
 UNLESS ALL SIGNATURES COMPLETED**

This document, together with the concepts and designs presented herein, as an instrument of service, is intended only for the specific purpose and client for which it was prepared. Reuse of and improper reliance of this document without written authorization and approval by Kimley-Horn and Associates, Inc. shall be without liability to Kimley-Horn and Associates, Inc.
 Copyright Kimley-Horn and Associates, Inc., 2024

K:\RD1\Structures\Bridges\NC\1036002 - P-5720\Code\Drawings\5720_SML_A52_91149.dgn 3/22/2024

ASSEMBLED BY : D.D. LOWERY	DATE : 1/19
CHECKED BY : S.A. DENNEY	DATE : 1/19
DRAWN BY : FCJ 11/88	REV. 6/13 MAA/GM
CHECKED BY : ARB 11/88	REV. 12/17 MAA/THC
	REV. 5/18 MAA/THC