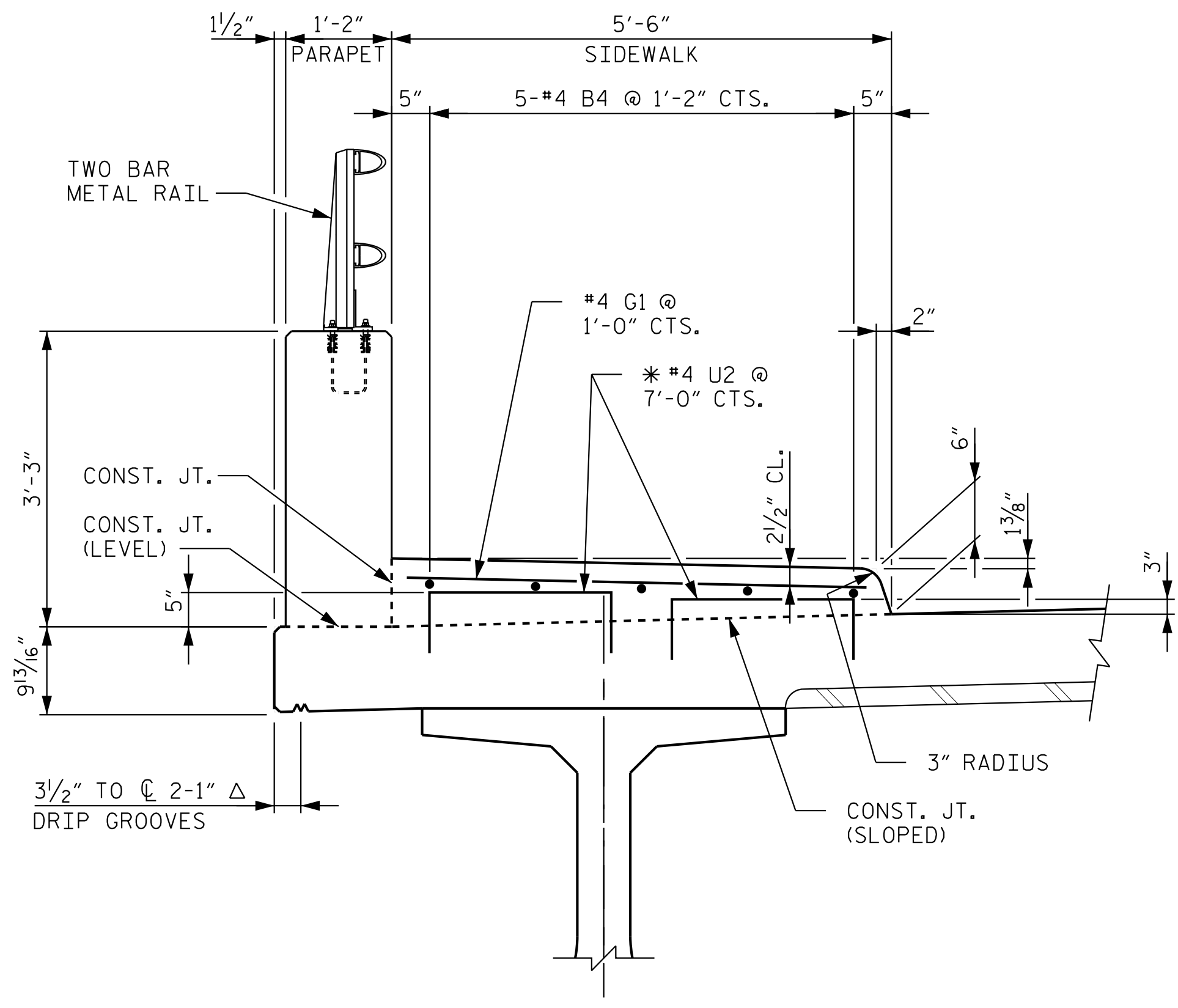


PLAN OF SIDEWALK  
(LEFT SIDE SHOWN, RIGHT SIDE SIMILAR)

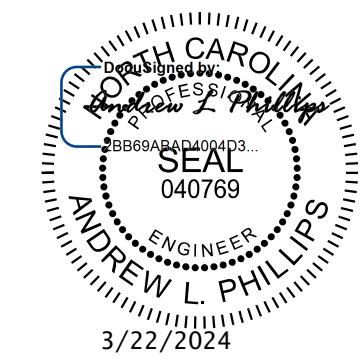


SECTION THRU SIDEWALK

NOTES

- ALL REINFORCING STEEL IN THE SIDEWALK SHALL BE EPOXY COATED.
- GROOVED CONTRACTION JOINTS, 1/2" IN DEPTH, SHALL BE TOOLED IN ALL EXPOSED FACES OF THE SIDEWALK IN ACCORDANCE WITH ARTICLE 825-10(B) OF THE STANDARD SPECIFICATIONS. THE CONTRACTION JOINTS SHALL BE LOCATED AT A SPACING OF 8 FEET TO 10 FEET BETWEEN EXPANSION JOINTS. NO CONTRACTION JOINT WILL BE REQUIRED IN SEGMENTS LESS THAN 10 FEET IN LENGTH.
- \* #4 U2 MAY BE PUSHED INTO GREEN CONCRETE AFTER THE DECK HAS BEEN SCREEDED OFF.
- SIDEWALK SHALL NOT BE CAST UNTIL ALL SLAB CONCRETE IN THE SPAN HAS BEEN CAST AND HAS REACHED A MINIMUM COMPRESSION STRENGTH OF 3,000 PSI.
- SEE APPROACH SLAB SHEETS, FOR SIDEWALK ON APPROACH SLAB.
- CONCRETE AND REINFORCING STEEL FOR THE SIDEWALK IS INCLUDED IN THE SUPERSTRUCTURE BILL OF MATERIAL. PAYMENT FOR THE SIDEWALK SHALL BE INCLUDED IN THE PAY ITEM "REINFORCED CONCRETE DECK SLAB".

PROJECT NO. P-5720  
WAKE COUNTY  
 STATION: 32+23.01 -L-



STATE OF NORTH CAROLINA  
 DEPARTMENT OF TRANSPORTATION  
 RALEIGH  
 SUPERSTRUCTURE  
 SIDEWALK DETAILS

**Kimley»Horn**  
 421 Fayetteville Street, Suite 600  
 Raleigh, NC 27601-1772  
 Phone (919) 677-2000  
 NC LICENSE # F-0102

**DOCUMENT NOT CONSIDERED FINAL  
 UNLESS ALL SIGNATURES COMPLETED**

REVISIONS				SHEET NO.
NO.	BY:	DATE:	NO.	DATE:
1			3	
2			4	

TOTAL SHEETS: 33

7/22/2024 K:\RD1-Structures\Bridges\NC\1036002 - P-5720\Cadd\Drawings\SWL\_SWI\_911.dwg  
 DRAWN BY: J. I. KIMBLE DATE: 1/19  
 CHECKED BY: M. D. MAGEE DATE: 1/19  
 DESIGN ENGINEER OF RECORD: S. A. DENNEY DATE: 1/19