

TYPICAL HALF SECTION  
(SHOWING INTERMEDIATE DIAPHRAGM)

NOTES

PROVIDE 1/4" HIGH BEAM BOLSTERS UPPER AT 4'-0" CTS. ATOP THE METAL STAY-IN-PLACE FORMS TO SUPPORT THE BOTTOM MAT OF "A" BARS. WHEN USING REMOVABLE FORMS, PROVIDE CONTINUOUS HIGH CHAIRS FOR METAL DECK (C.H.C.M.) @ 4'-0" CTS. WITH A HEIGHT TO SUPPORT THE BOTTOM MAT OF "A" BARS A CLEAR DISTANCE OF 2 1/2" ABOVE THE TOP OF THE REMOVABLE FORM.

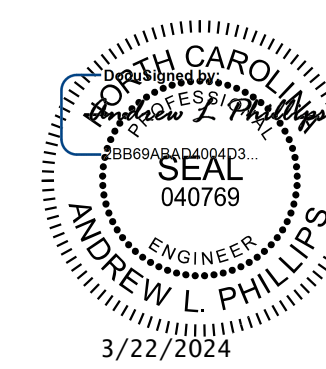
LONGITUDINAL STEEL MAY BE SHIFTED SLIGHTLY, AS NECESSARY, TO AVOID INTERFERENCE WITH STIRRUPS IN PRESTRESSED CONCRETE GIRDERS.

PREVIOUSLY CAST CONCRETE IN A CONTINUOUS UNIT SHALL HAVE ATTAINED A MINIMUM COMPRESSIVE STRENGTH OF 3,000 PSI BEFORE ADDITIONAL CONCRETE IS CAST IN THE UNIT.

\* BASED ON PREDICTED FINAL CAMBER AND THEORETICAL GRADE LINE ELEVATIONS.

PROJECT NO. P-5720  
WAKE COUNTY  
 STATION: 32+23.01 -L-

SHEET 1 OF 2



STATE OF NORTH CAROLINA  
 DEPARTMENT OF TRANSPORTATION  
 RALEIGH  
 SUPERSTRUCTURE  
 TYPICAL SECTION

**Kimley»Horn**  
 421 Fayetteville Street, Suite 600  
 Raleigh, NC 27601-1772  
 Phone (919) 677-2000  
 NC LICENSE # F-0102

**DOCUMENT NOT CONSIDERED FINAL  
 UNLESS ALL SIGNATURES COMPLETED**

DRAWN BY: <u>J. I. KIMBLE</u>	DATE: <u>1/19</u>
CHECKED BY: <u>M. D. MAGEE</u>	DATE: <u>1/19</u>
DESIGN ENGINEER OF RECORD: <u>S. A. DENNEY</u>	DATE: <u>1/19</u>

REVISIONS					SHEET NO. S-5 TOTAL SHEETS 33
NO.	BY:	DATE:	NO.	DATE:	
1			3		
2			4		

3/22/2024 K:\DOT\Structures\Bridges\NC\01036002 - P-5720\Cad\Drawings\5720\_S&U\_1S1\_911494.dgn