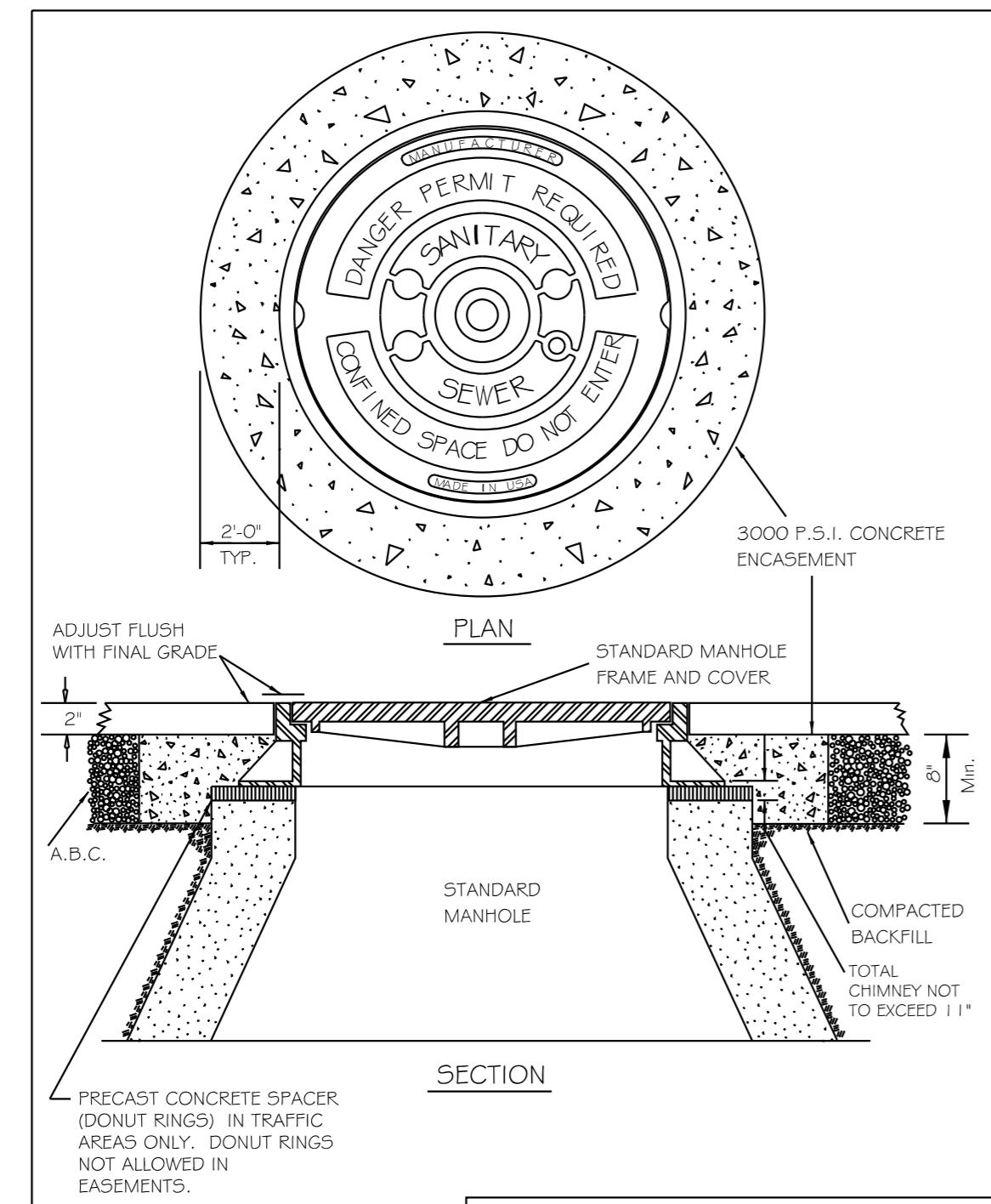


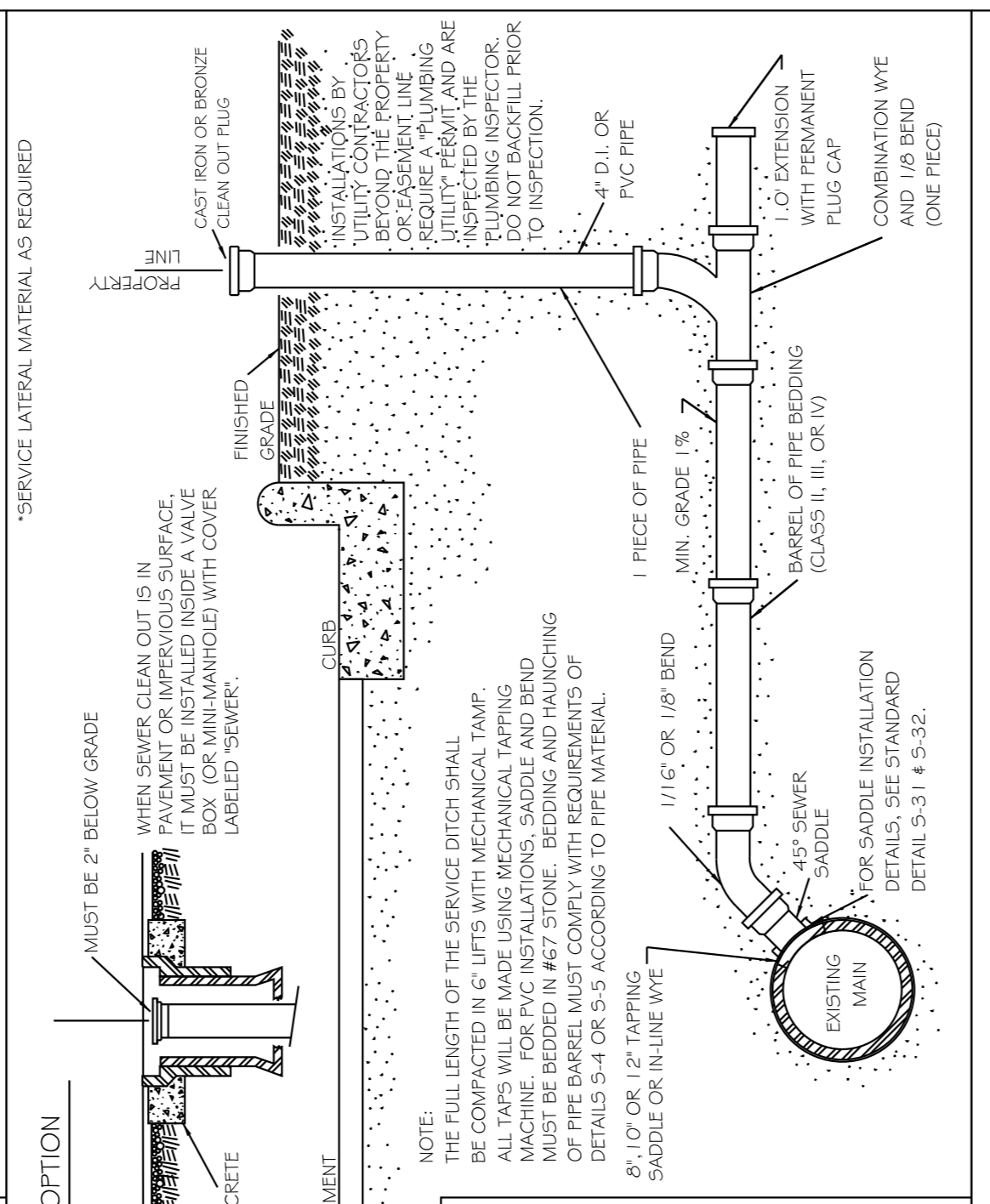
PROJECT REFERENCE NO.	SHEET NO.
P-5720	UC-3E
DESIGNED BY: DGB	
DRAWN BY: DGB	
CHECKED BY: ZGP	
APPROVED BY: NDR	
REVISED:	UTILITY CONSTRUCTION PLANS ONLY
NORTH CAROLINA DEPARTMENT OF TRANSPORTATION	
UTILITIES ENGINEERING SEC. PHONE: (919) 707-6690 FAX: (919) 250-4151	

UTILITY CONSTRUCTION

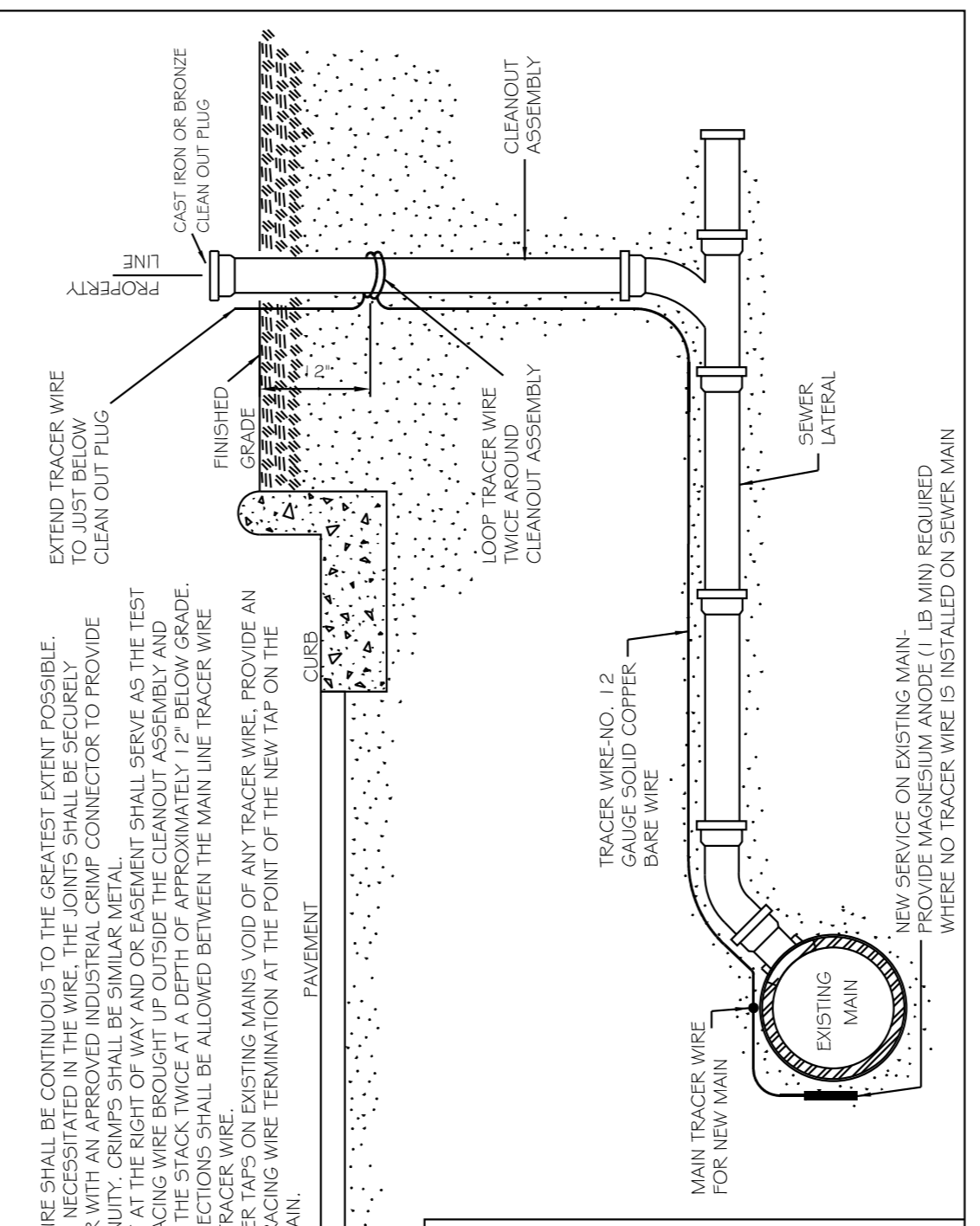
REVISIONS



CITY OF RALEIGH					
DEPARTMENT OF PUBLIC UTILITIES					
STANDARD MANHOLE FRAME AND COVER DETAIL WITHIN PAVED SURFACES					
DWG. NO.	REVISIONS	DATE	REVISIONS	DATE	
S-29					
	Y.C.A.	2-31-91	ABB	9-20-04	
	RRH	3-30-00	DHL	11-29-07	

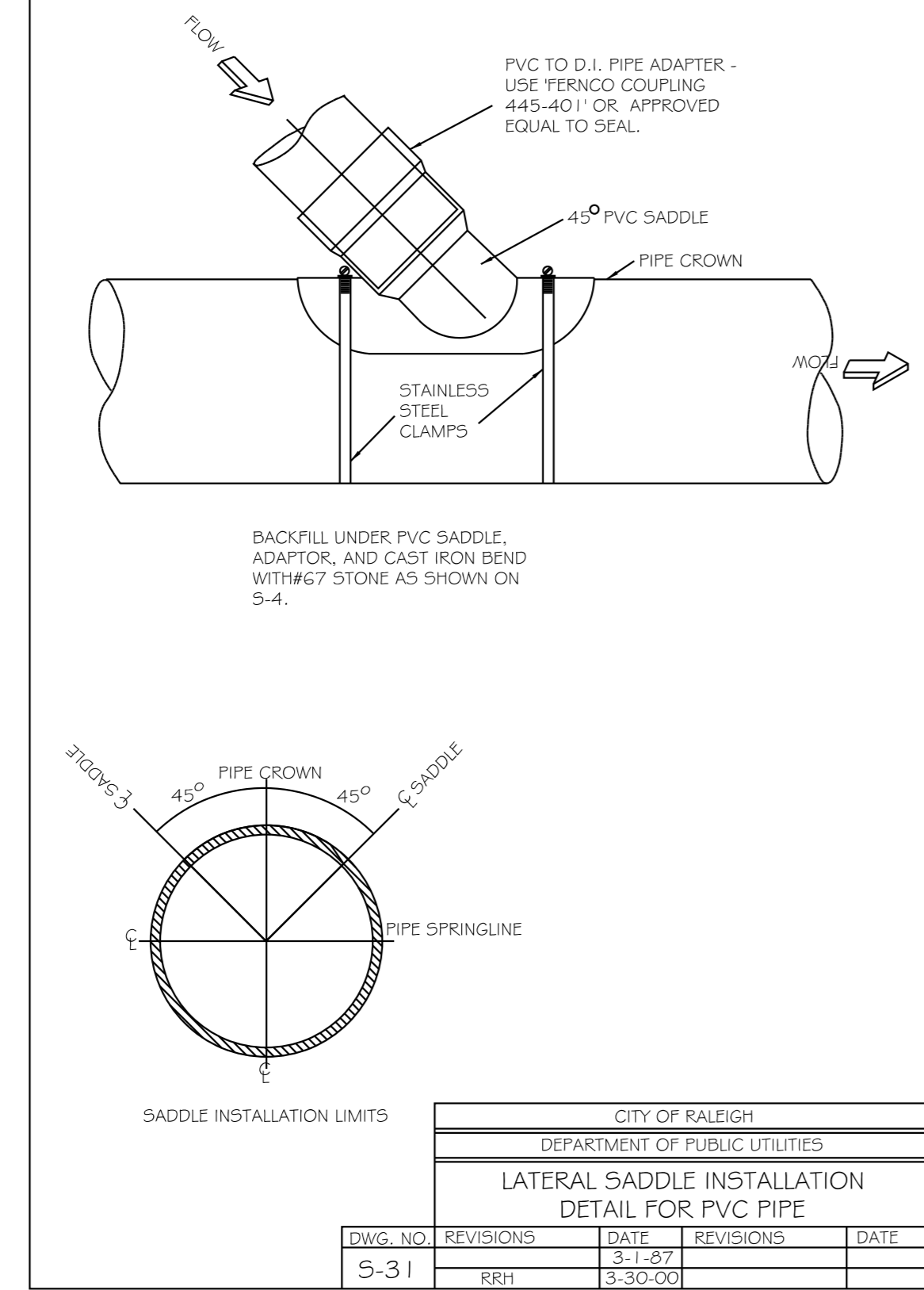


CITY OF RALEIGH					
DEPARTMENT OF PUBLIC UTILITIES					
TYPICAL SANITARY SEWER LATERAL CONNECTION					
DWG. NO.	REVISIONS	DATE	REVISIONS	DATE	
S-30					
	Y.C.A.	6-92	A.B.B.	4-2-04	
	RRH	3-30-00	D.H.L.	6-18-08	

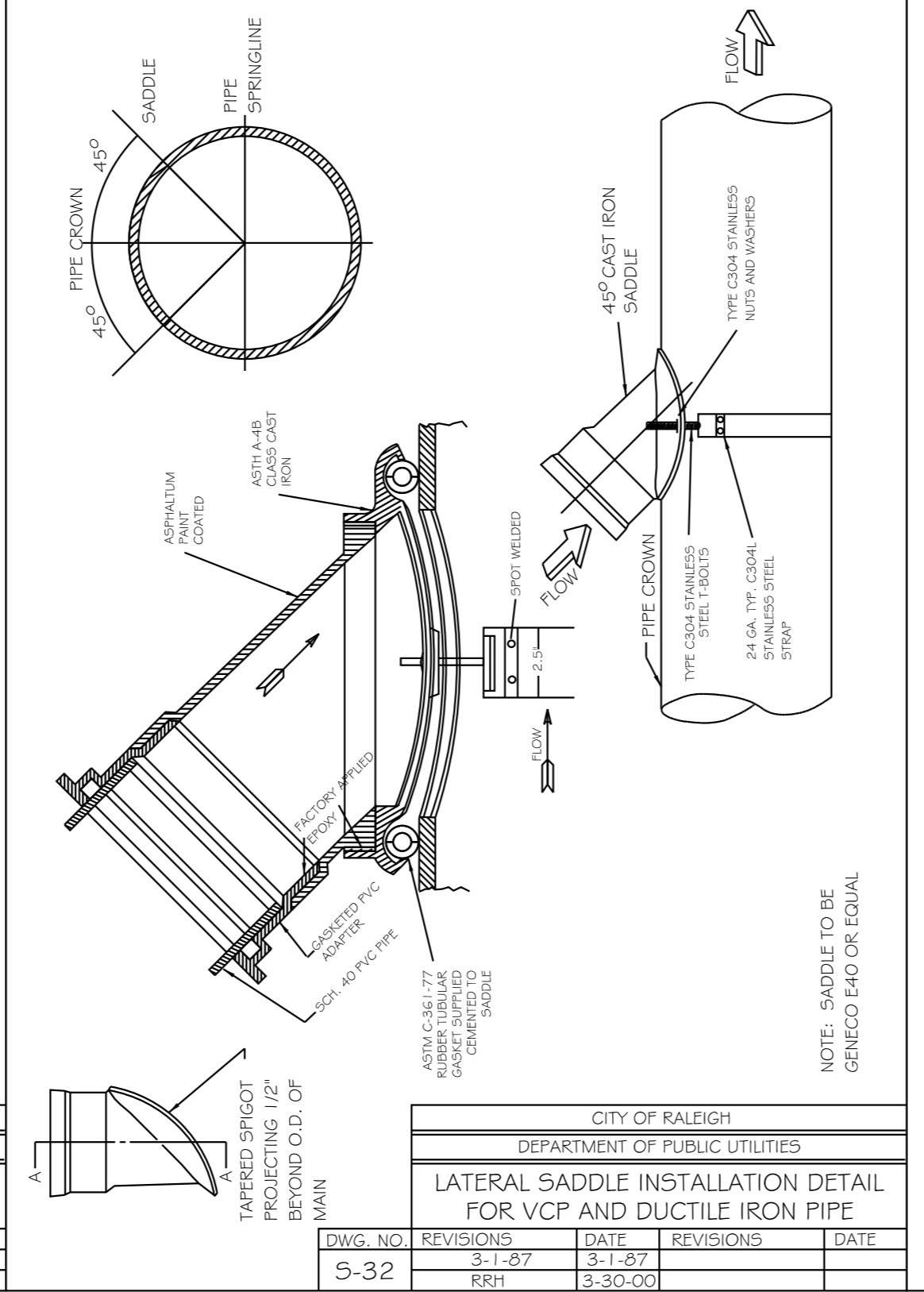


CITY OF RALEIGH					
DEPARTMENT OF PUBLIC UTILITIES					
TYPICAL SANITARY SEWER LATERAL TRACER WIRE					
DWG. NO.	REVISIONS	DATE	REVISIONS	DATE	
S-30A					
	WKD	9-14			

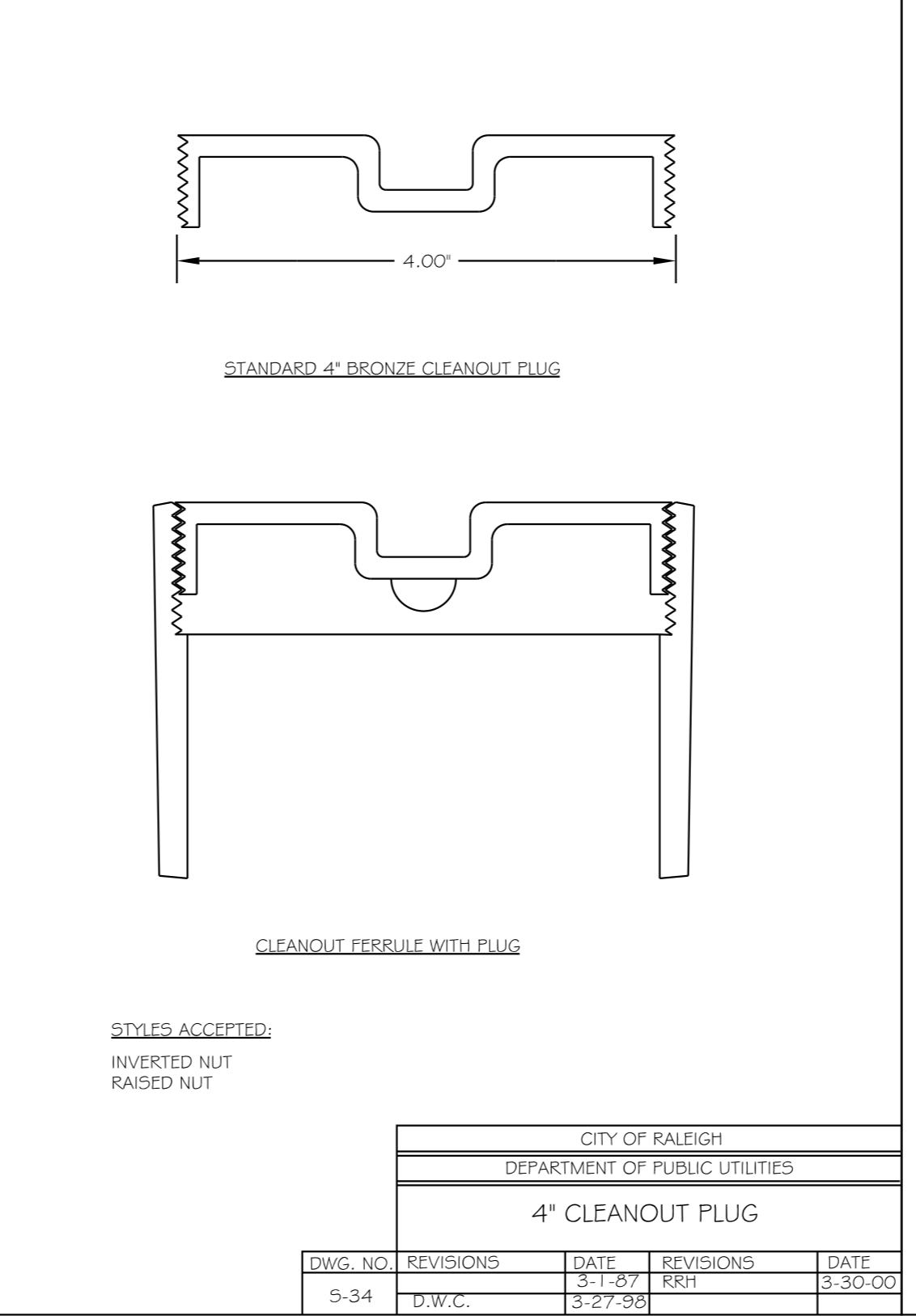
- NOTES:
1. THE TRACER WIRE SHALL BE CONTINUOUS TO THE GREATEST EXTENT POSSIBLE. WHERE JOINTS ARE NECESSARY IN THE WIRE, THE JOINTS SHALL BE SECURELY WELDED TOGETHER WITH AN APPROVED WELDING CONNECTOR TO PROVIDE ELECTRICAL CONTINUITY. CRIMPS SHALL BE SIMILAR METAL.
 2. THE CLEANOUT AT THE RIGHT OF WAY AND OR EASEMENT SHALL SERVE AS THE TEST POINT WITH THE TRACING WIRE BROUGHT UP OUTSIDE THE CLEANOUT ASSEMBLY AND WRAPPED AROUND THE STACK TWICE AT A DEPTH OF APPROXIMATELY 12\"/>



CITY OF RALEIGH					
DEPARTMENT OF PUBLIC UTILITIES					
LATERAL SADDLE INSTALLATION DETAIL FOR PVC PIPE					
DWG. NO.	REVISIONS	DATE	REVISIONS	DATE	
S-31					
	RRH	3-1-87			
		3-30-00			

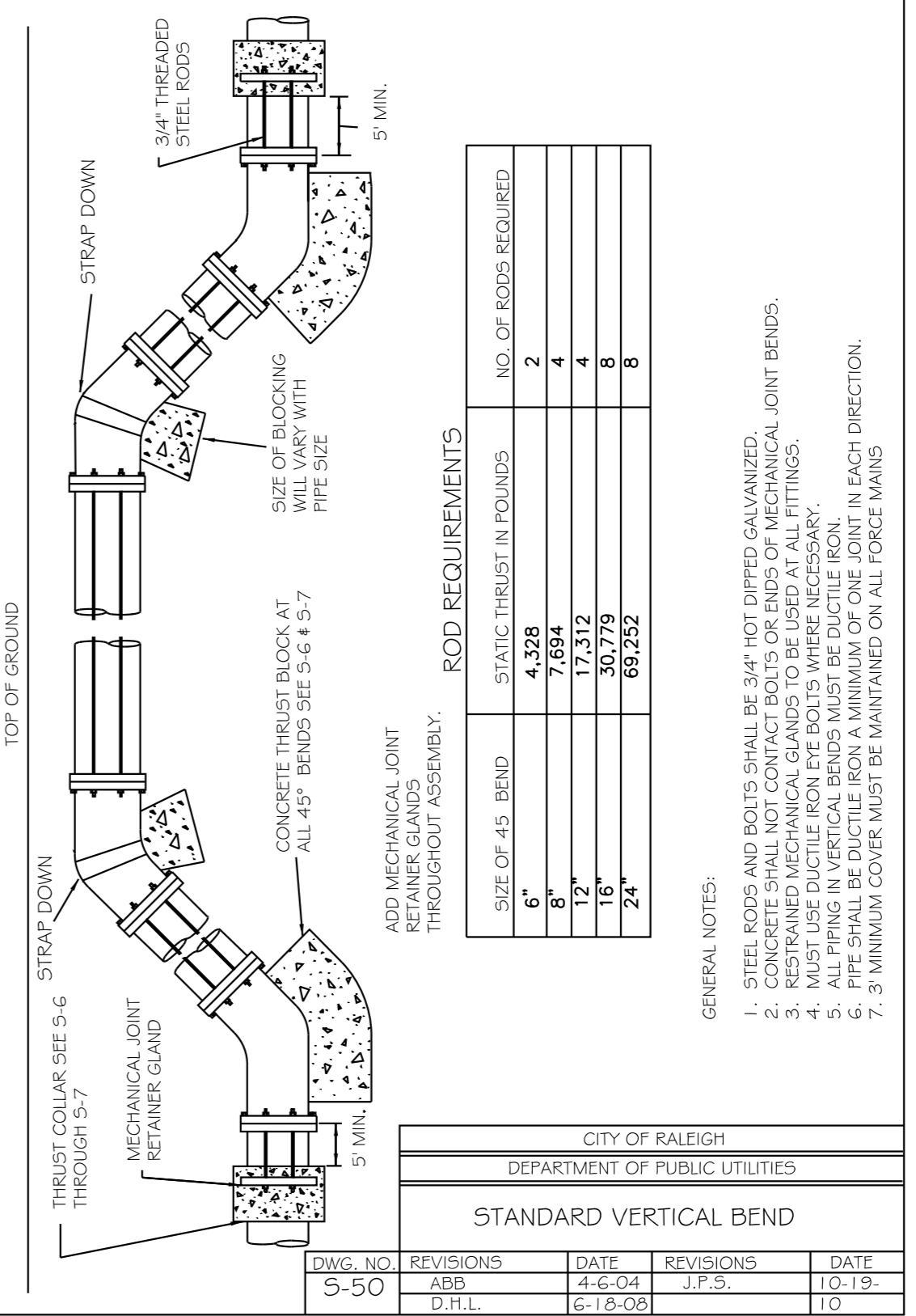


CITY OF RALEIGH					
DEPARTMENT OF PUBLIC UTILITIES					
LATERAL SADDLE INSTALLATION DETAIL FOR VCP AND DUCTILE IRON PIPE					
DWG. NO.	REVISIONS	DATE	REVISIONS	DATE	
S-32					
	RRH	3-1-87			
		3-30-00			



CITY OF RALEIGH					
DEPARTMENT OF PUBLIC UTILITIES					
4\"/>					
DWG. NO.	REVISIONS	DATE	REVISIONS	DATE	
S-34					
	D.W.C.	3-27-98			

- STYLES ACCEPTED:
- INVERTED NUT
 - RAISED NUT



ROD REQUIREMENTS			
SIZE OF 45° BEND	STATIC THRUST IN POUNDS	NO. OF RODS REQUIRED	
6"	4,328	2	
8"	7,894	4	
12"	17,312	4	
16"	30,779	8	
24"	69,252	8	

- GENERAL NOTES:
1. STEEL RODS AND BOLTS SHALL BE 3/4\"/>

CITY OF RALEIGH					
DEPARTMENT OF PUBLIC UTILITIES					
STANDARD VERTICAL BEND					
DWG. NO.	REVISIONS	DATE	REVISIONS	DATE	
S-50					
	ARR	4-6-04	J.F.S.	10-11-99	
	D.H.L.	6-18-08			

Water and Sewer Permits (if available)

The City of Raleigh consents to the connection and extension of the City's Public Sewer System as shown on this plan. The material and Construction methods used for this project shall conform to the standards and specifications of the City's Public Utilities Handbook, City of Raleigh Public Utilities Department Permit # S-4499

The City of Raleigh consents to the connection and extension of the City's Public Water System as shown on this plan. The material and Construction methods used for this project shall conform to the standards and specifications of the City's Public Utilities Handbook, City of Raleigh Public Utilities Department Permit # W-3582

The City of Raleigh consents to the connection and extension of the private sewer collection system as shown on this plan. The material and Construction methods used for this project shall conform to the standards and specifications of the City's Public Utilities Handbook, City of Raleigh Public Utilities Department Permit # N/A

CITY OF RALEIGH - PLANS AUTHORIZED FOR CONSTRUCTION

Electronic Approval: This approval is being issued electronically. This approval is valid only upon the signature of a City of Raleigh Review Officer below. The City will retain a copy of the approved plans. Any work authorized by this approval must proceed in accordance with the plans kept on file with the City. This electronic approval may not be edited once issued. Any modification to this approval once issued will invalidate this approval.

City of Raleigh Development Approval _____
 City of Raleigh Review Officer _____