

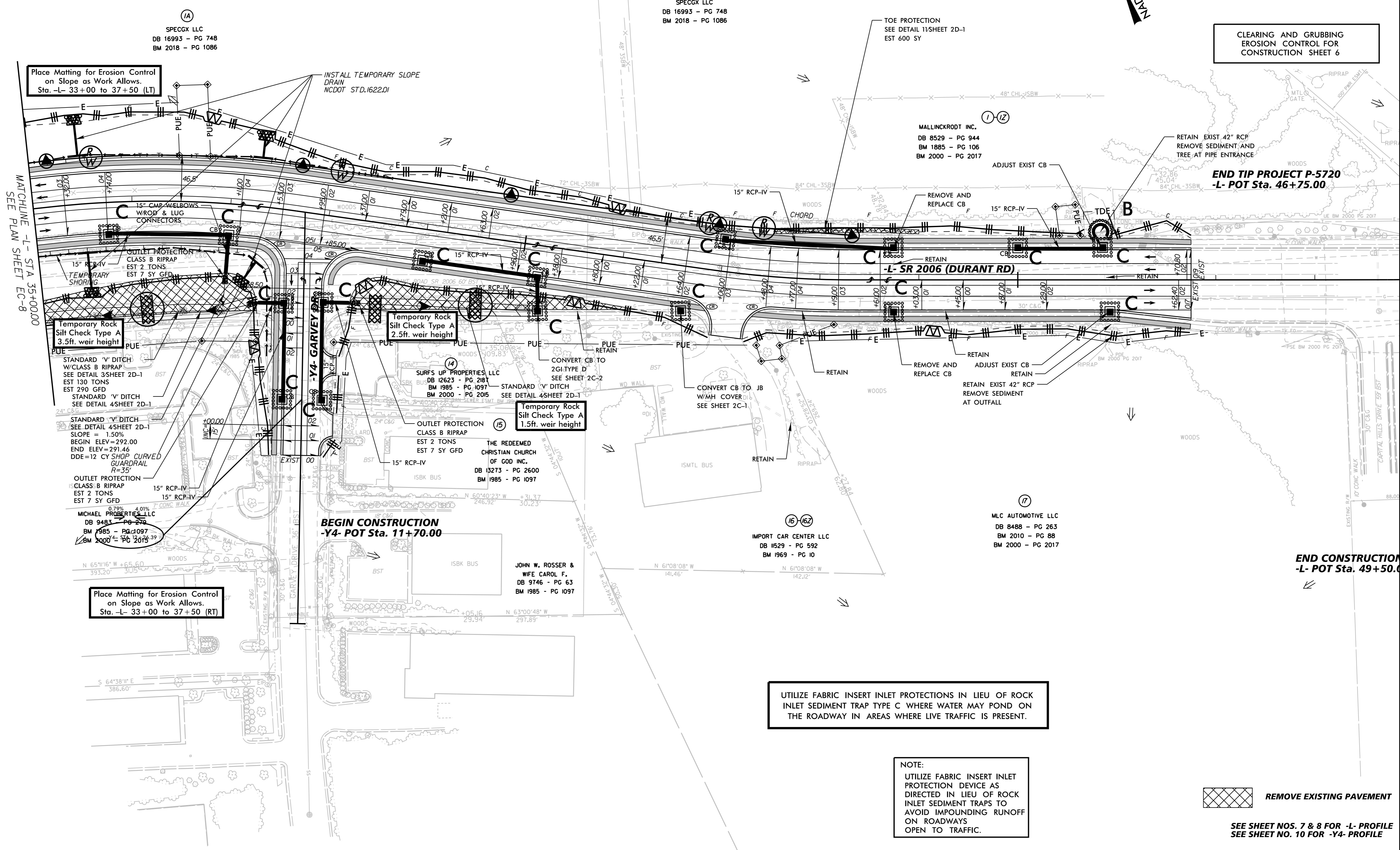
PROJECT REFERENCE NO.	SHEET NO.
P-5720	EC-9/CONST.6
RW SHEET NO.	
ROADWAY DESIGN ENGINEER	HYDRAULICS ENGINEER

<p>PI Sta 36+43.09 $\Delta = 14' 13" 25.9" (RT)$ $D = 5' 43" 46.5"$ $L = 248.25'$ $T = 124.77'$ $R = 1,000.00'$ $SE = 0.04$</p>	<p>PI Sta 42+62.30 $\Delta = 8' 04" 23.2" (LT)$ $D = 5' 43" 46.5"$ $L = 140.90'$ $T = 70.57'$ $R = 1,000.00'$ $SE = 0.04$</p>	<p>PI Sta 48+16.79 $\Delta = 0' 08" 53.8" (LT)$ $D = 0' 07" 51.5"$ $L = 113.23'$ $T = 56.62'$ $R = 43,751.02'$</p>	<p>PI Sta 49+50.00 $\Delta = 0' 00" 00.0" (LT)$ $D = 0' 00" 00.0"$ $L = 5.96'$ $T = 2.98'$ $R = 40,336.05'$</p>
---	---	--	---

35

40

45



Place Matting for Erosion Control on Slope as Work Allows. Sta. -L- 33+00 to 37+50 (LT)

INSTALL TEMPORARY SLOPE DRAIN NCDOT STD.1622.01

Temporary Rock Silt Check Type A 3.5ft. weir height

Temporary Rock Silt Check Type A 2.5ft. weir height

Temporary Rock Silt Check Type A 1.5ft. weir height

STANDARD 'V' DITCH W/CLASS B RIPRAP SEE DETAIL 3/SHEET 2D-1 EST 130 TONS EST 290 GFD

STANDARD 'V' DITCH SEE DETAIL 4/SHEET 2D-1 SLOPE = 1.50% BEGIN ELEV=292.00 END ELEV=291.46 DDE=12 CY SHOP CURVED GUARDRAIL R=35'

OUTLET PROTECTION CLASS B RIPRAP EST 2 TONS EST 7 SY GFD

MICHAEL PROPERTIES LLC DB 9483 - PG 270 BM 1985 - PG 1097 BM 2000 - PG 2015

BEGIN CONSTRUCTION -Y4- POT Sta. 11+70.00

Place Matting for Erosion Control on Slope as Work Allows. Sta. -L- 33+00 to 37+50 (RT)

TOE PROTECTION SEE DETAIL 11/SHEET 2D-1 EST 600 SY

MALLINCKRODT INC. DB 8529 - PG 944 BM 1885 - PG 106 BM 2000 - PG 2017

CLEARING AND GRUBBING EROSION CONTROL FOR CONSTRUCTION SHEET 6

END TIP PROJECT P-5720 -L- POT Sta. 46+75.00

UTILIZE FABRIC INSERT INLET PROTECTIONS IN LIEU OF ROCK INLET SEDIMENT TRAP TYPE C WHERE WATER MAY POND ON THE ROADWAY IN AREAS WHERE LIVE TRAFFIC IS PRESENT.

NOTE: UTILIZE FABRIC INSERT INLET PROTECTION DEVICE AS DIRECTED IN LIEU OF ROCK INLET SEDIMENT TRAPS TO AVOID IMPOUNDING RUNOFF ON ROADWAYS OPEN TO TRAFFIC.

REMOVE EXISTING PAVEMENT

SEE SHEET NOS. 7 & 8 FOR -L- PROFILE SEE SHEET NO. 10 FOR -Y4- PROFILE

REVISIONS

5/14/99

12/22/2023