

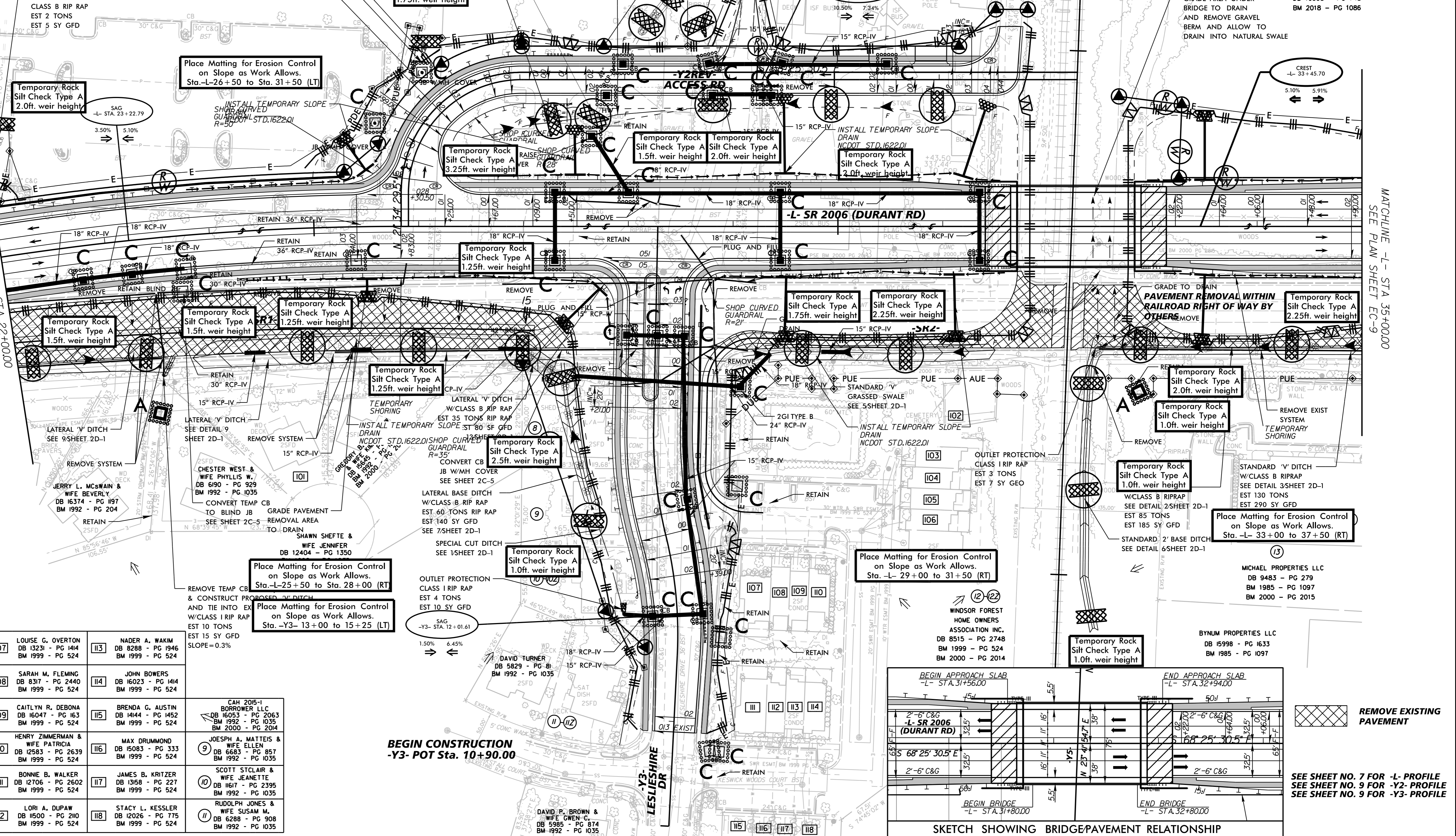
PROJECT REFERENCE NO.	SHEET NO.
P-5720	EC-8/CONST.5
RDW SHEET NO.	
ROADWAY DESIGN ENGINEER	HYDRAULICS ENGINEER

FINAL EROSION CONTROL FOR CONSTRUCTION SHEET 5

-L-	-Y2REV-	-Y2-
PI Sta 22+40.96 Δ = 15° 47' 19.4" (RT) D = 2' 17' 30.6" L = 688.91' T = 346.65' R = 2,500.00' SE = 0.03	PI Sta 11+40.00 Δ = 90° 00' 00.0" (RT) D = 53' 03' 05.9" L = 169.65' T = 108.00' R = 108.00' SE = 0.04	PI Sta 11+47.00 Δ = 90° 00' 00.0" (RT) D = 49' 49' 20.7" L = 180.64' T = 115.00' R = 115.00'

-Y3-	
PI Sta 12+21.27 Δ = 16° 38' 57.7" (LT) D = 14' 19' 26.2" L = 116.23' T = 58.53' R = 400.00' SE = RC	PI Sta 13+31.52 Δ = 14° 58' 04.0" (RT) D = 14' 19' 26.2" L = 104.49' T = 52.55' R = 400.00' SE = RC

LIFEPOINTE CHRISTIAN CHURCH INC.  
DB 14386 - PG 2347  
BM 2013 - PG 104  
BM 2000 - PG 2013

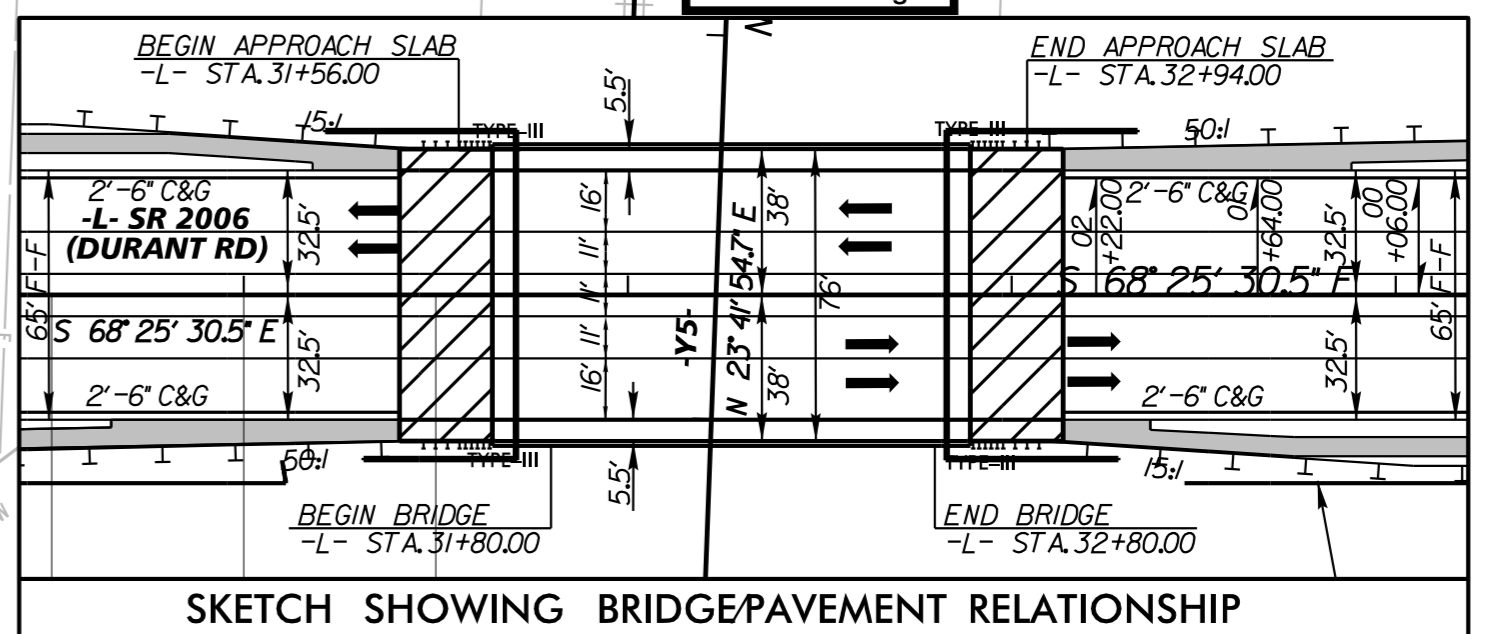


REVISIONS

MATCHLINE -L- STA 22+00.00  
SEE PLAN SHEET EC-7

MATCHLINE -L- STA 35+00.00  
SEE PLAN SHEET EC-9

101 THOMAS DUDLEY & WIFE SARAH L. DB 16568 - PG 2601 BM 1992 - PG 1035 BM 2000 - PG 2013	107 LOUISE G. OVERTON DB 13231 - PG 1414 BM 1999 - PG 524	113 NADER A. WAKIM DB 8288 - PG 1946 BM 1999 - PG 524
102 DURANT TRAILS DB 6231 - PG 124 BM 1999 - PG 524	108 SARAH M. FLEMING DB 8317 - PG 2440 BM 1999 - PG 524	114 JOHN BOWERS DB 16023 - PG 1414 BM 1999 - PG 524
103 DAVID W. MILLER DB 16374 - PG 1096 BM 1999 - PG 524	109 CAITLYN R. DEBONA DB 16047 - PG 163 BM 1999 - PG 524	115 BRENDA G. AUSTIN DB 14144 - PG 1452 BM 1999 - PG 524
104 DANIELLE R. TRICARIO DB 16635 - PG 789 BM 1999 - PG 524	110 HENRY ZIMMERMAN & WIFE PATRICIA DB 12583 - PG 2639 BM 1999 - PG 524	116 MAX DRUMMOND DB 15083 - PG 333 BM 1999 - PG 524
105 GARY S. FLOHR DB 8477 - PG 110 BM 1999 - PG 524	111 BONNIE B. WALKER DB 12706 - PG 2602 BM 1999 - PG 524	117 JAMES B. KRITZER DB 13158 - PG 227 BM 1999 - PG 524
106 GLORIA H. TARKENTON & REBEKAH E. DB 8477 - PG 110 BM 1999 - PG 524	112 LORI A. DUPAW DB 1500 - PG 210 BM 1999 - PG 524	118 STACY L. KESSLER DB 12026 - PG 775 BM 1999 - PG 524
		CAH 2015-1 BORROWER LLC DB 16053 - PG 2063 BM 1992 - PG 1035 BM 2000 - PG 2014
		JOESPH A. MATTEIS & WIFE ELLEN DB 6683 - PG 857 BM 1992 - PG 1035
		SCOTT STCLAIR & WIFE JEANETTE DB 11617 - PG 2395 BM 1992 - PG 1035
		RUDOLPH JONES & WIFE SUSAN M. DB 6288 - PG 908 BM 1992 - PG 1035



SEE SHEET NO. 7 FOR -L- PROFILE  
SEE SHEET NO. 9 FOR -Y2- PROFILE  
SEE SHEET NO. 9 FOR -Y3- PROFILE

12/22/2023