

5/14/99

12/22/2023

**-L-**

PI Sta 15+89.00  
 $\Delta = 36' 14" 39.9" (LT)$   
 $D = 5' 43" 46.5"$   
 $L = 632.58'$   
 $T = 327.28'$   
 $R = 1,000.00'$   
 $SE = 0.04$

PI Sta 22+40.96  
 $\Delta = 15' 47" 19.4" (RT)$   
 $D = 2' 17" 30.6"$   
 $L = 688.91'$   
 $T = 346.65'$   
 $R = 2,500.00'$   
 $SE = 0.03$

**-DRW1-**

PI Sta 10+66.76  
 $\Delta = 20' 22' 45.8" (RT)$   
 $D = 38' 11' 49.9"$   
 $L = 53.35'$   
 $T = 26.96'$   
 $R = 150.00'$

UTILIZE FABRIC INSERT INLET PROTECTIONS IN LIEU OF ROCK INLET SEDIMENT TRAP TYPE C WHERE WATER MAY POND ON THE ROADWAY IN AREAS WHERE LIVE TRAFFIC IS PRESENT.

FINAL EROSION CONTROL FOR CONSTRUCTION SHEET 4

**Kimley Horn**  
 421 FAYETTEVILLE STREET, SUITE 600  
 RALEIGH, N.C. 27601

PROJECT REFERENCE NO.	SHEET NO.
P-5720	EC-7/CONST. 4
RW SHEET NO.	
ROADWAY DESIGN ENGINEER	HYDRAULICS ENGINEER

①  
 MALLINCKRODT INC.  
 DB 8529 - PG 944  
 BM 1976 - PG 28  
 BM 2000 - PG 2010  
 BM 2014 - PG 1348

②  
 LIFEPOINT CHRISTIAN CHURCH INC.  
 DB 14386 - PG 2347  
 BM 2013 - PG 204  
 BM 1982 - PG 677  
 BM 2000 - PG 2012

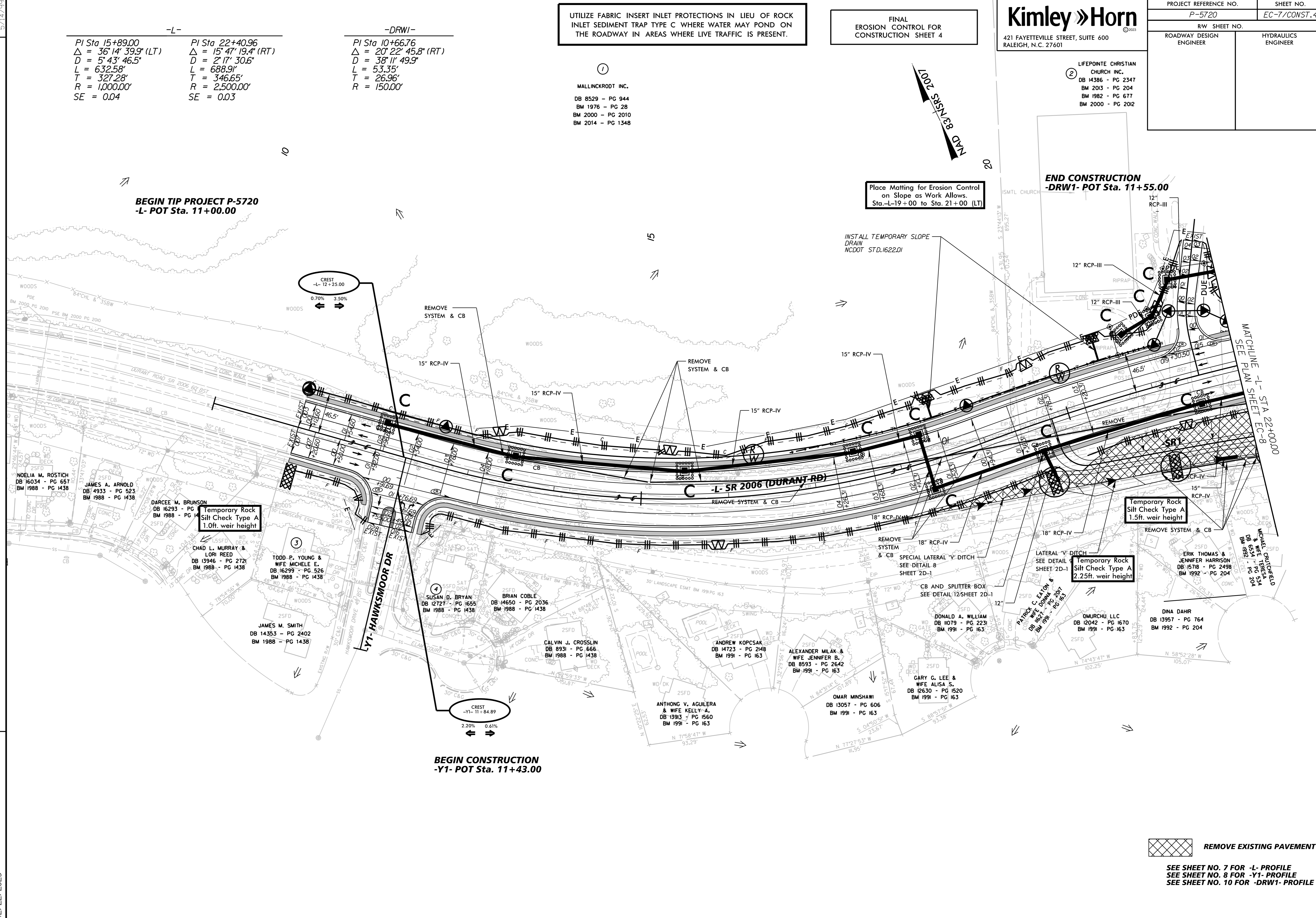
**BEGIN TIP PROJECT P-5720**  
**-L- POT Sta. 11+00.00**

Place Matting for Erosion Control on Slope as Work Allows. Sta.-L-19+00 to Sta. 21+00 (LT)

**END CONSTRUCTION**  
**-DRW1- POT Sta. 11+55.00**

**BEGIN CONSTRUCTION**  
**-Y1- POT Sta. 11+43.00**

REVISIONS



REMOVE EXISTING PAVEMENT

SEE SHEET NO. 7 FOR -L- PROFILE  
 SEE SHEET NO. 8 FOR -Y1- PROFILE  
 SEE SHEET NO. 10 FOR -DRW1- PROFILE