

PROJECT REFERENCE NO.	SHEET NO.
P-5720	EC-6/CONST.6
RW SHEET NO.	
ROADWAY DESIGN ENGINEER	HYDRAULICS ENGINEER

PI Sta 36+43.09
 $\Delta = 14' 13" 25.9" (RT)$
 $D = 5' 43" 46.5"$
 $L = 248.25'$
 $T = 124.77'$
 $R = 1,000.00'$
 $SE = 0.04$

PI Sta 42+62.30
 $\Delta = 8' 04" 23.2" (LT)$
 $D = 5' 43" 46.5"$
 $L = 140.90'$
 $T = 70.57'$
 $R = 1,000.00'$
 $SE = 0.04$

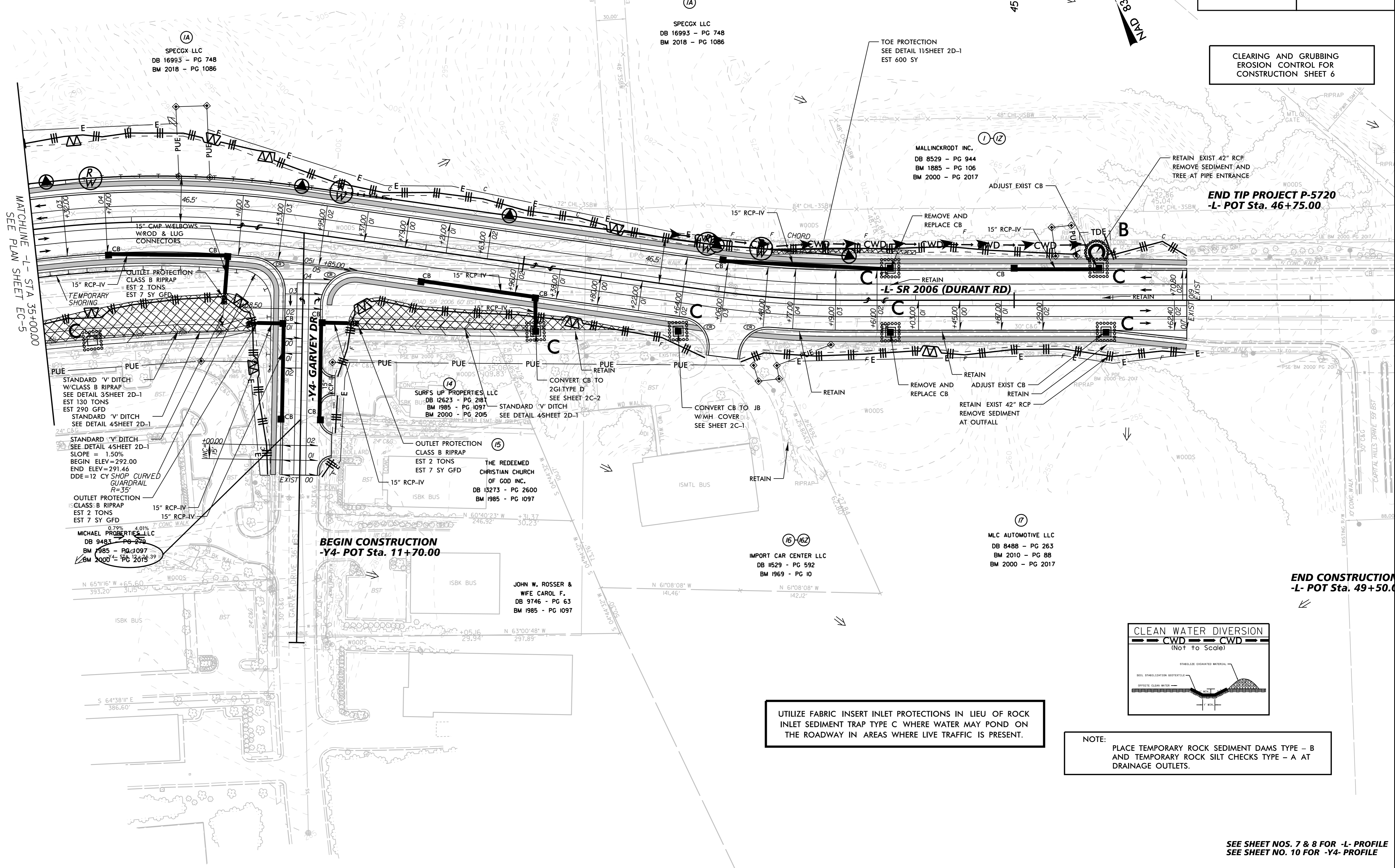
PI Sta 48+16.79
 $\Delta = 0' 08" 53.8" (LT)$
 $D = 0' 07" 51.5"$
 $L = 113.23'$
 $T = 56.62'$
 $R = 43,751.02'$

PI Sta 49+50.00
 $\Delta = 0' 05" 37.4"$
 $D = 5.96'$
 $T = 2.98'$
 $R = 40,336.05'$

35

40

45



MATCHLINE -L- STA 35+00.00
SEE PLAN SHEET EC-5

CLEARING AND GRUBBING
EROSION CONTROL FOR
CONSTRUCTION SHEET 6

END TIP PROJECT P-5720
-L- POT Sta. 46+75.00

END CONSTRUCTION
-L- POT Sta. 49+50.00

15" RCP-IV
 W/CLASS B RIPRAP
 SEE DETAIL 3/SHEET 2D-1
 EST 130 TONS
 EST 290 GFD
 STANDARD 'V' DITCH
 SEE DETAIL 4/SHEET 2D-1

STANDARD 'V' DITCH
 SEE DETAIL 4/SHEET 2D-1
 SLOPE = 1.50%
 BEGIN ELEV = 292.00
 END ELEV = 291.46
 DDE = 12 CY SHOP CURVED
 GUARDRAIL
 R=35'

OUTLET PROTECTION
 CLASS B RIPRAP
 EST 2 TONS
 EST 7 SY GFD

MICHAEL PROPERTIES LLC
 DB 9483 - PG 270
 BM 1985 - PG 097
 BM 2000 - PG 2016

BEGIN CONSTRUCTION
-Y4- POT Sta. 11+70.00

SURFS UP PROPERTIES LLC
 DB 12623 - PG 2181
 BM 1985 - PG 1097
 BM 2000 - PG 2015

STANDARD 'V' DITCH
 SEE DETAIL 4/SHEET 2D-1

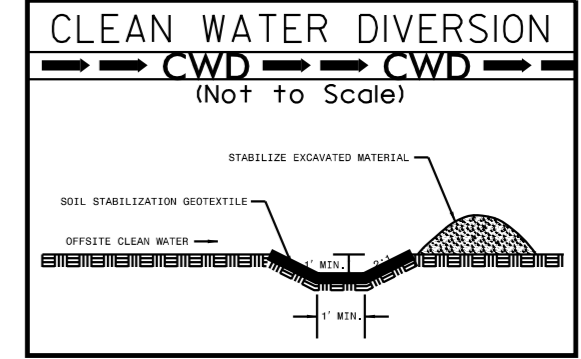
THE REDEEMED
 CHRISTIAN CHURCH
 OF GOD INC.
 DB 13273 - PG 2600
 BM 1985 - PG 1097

JOHN W. ROSSER &
 WIFE CAROL F.
 DB 9746 - PG 63
 BM 1985 - PG 1097

IMPORT CAR CENTER LLC
 DB 19529 - PG 592
 BM 1969 - PG 10

MLC AUTOMOTIVE LLC
 DB 8488 - PG 263
 BM 2010 - PG 88
 BM 2000 - PG 2017

UTILIZE FABRIC INSERT INLET PROTECTIONS IN LIEU OF ROCK INLET SEDIMENT TRAP TYPE C WHERE WATER MAY POND ON THE ROADWAY IN AREAS WHERE LIVE TRAFFIC IS PRESENT.



NOTE:
PLACE TEMPORARY ROCK SEDIMENT DAMS TYPE - B AND TEMPORARY ROCK SILT CHECKS TYPE - A AT DRAINAGE OUTLETS.

SEE SHEET NOS. 7 & 8 FOR -L- PROFILE
SEE SHEET NO. 10 FOR -Y4- PROFILE

REVISIONS

5/14/99

12/22/2023