

5/14/99

-L-

PI Sta 15+89.00
 $\Delta = 36' 14" 39.9"$ (LT)
 $D = 5' 43" 46.5"$
 $L = 632.58'$
 $T = 327.28'$
 $R = 1,000.00'$
 $SE = 0.04$

PI Sta 22+40.96
 $\Delta = 15' 47" 19.4"$ (RT)
 $D = 2' 17" 30.6"$
 $L = 688.91'$
 $T = 346.65'$
 $R = 2,500.00'$
 $SE = 0.03$

-DRWI-

PI Sta 10+66.76
 $\Delta = 20' 22" 45.8"$ (RT)
 $D = 38' 11" 49.9"$
 $L = 53.35'$
 $T = 26.96'$
 $R = 150.00'$

UTILIZE FABRIC INSERT INLET PROTECTIONS IN LIEU OF ROCK
 INLET SEDIMENT TRAP TYPE C WHERE WATER MAY POND ON
 THE ROADWAY IN AREAS WHERE LIVE TRAFFIC IS PRESENT.

CLEARING AND GRUBBING
 EROSION CONTROL FOR
 CONSTRUCTION SHEET 4

Kimley Horn
 421 FAYETTEVILLE STREET, SUITE 600
 RALEIGH, N.C. 27601

PROJECT REFERENCE NO. P-5720	SHEET NO. EC-4/CONST. 4
RW SHEET NO.	
ROADWAY DESIGN ENGINEER	HYDRAULICS ENGINEER

NOTE:
 PLACE TEMPORARY ROCK SEDIMENT DAMS TYPE - B
 AND TEMPORARY ROCK SILT CHECKS TYPE - A AT
 DRAINAGE OUTLETS.

①
 MALLINCKRODT INC.
 DB 8529 - PG 944
 BM 1976 - PG 28
 BM 2000 - PG 210
 BM 2014 - PG 1348

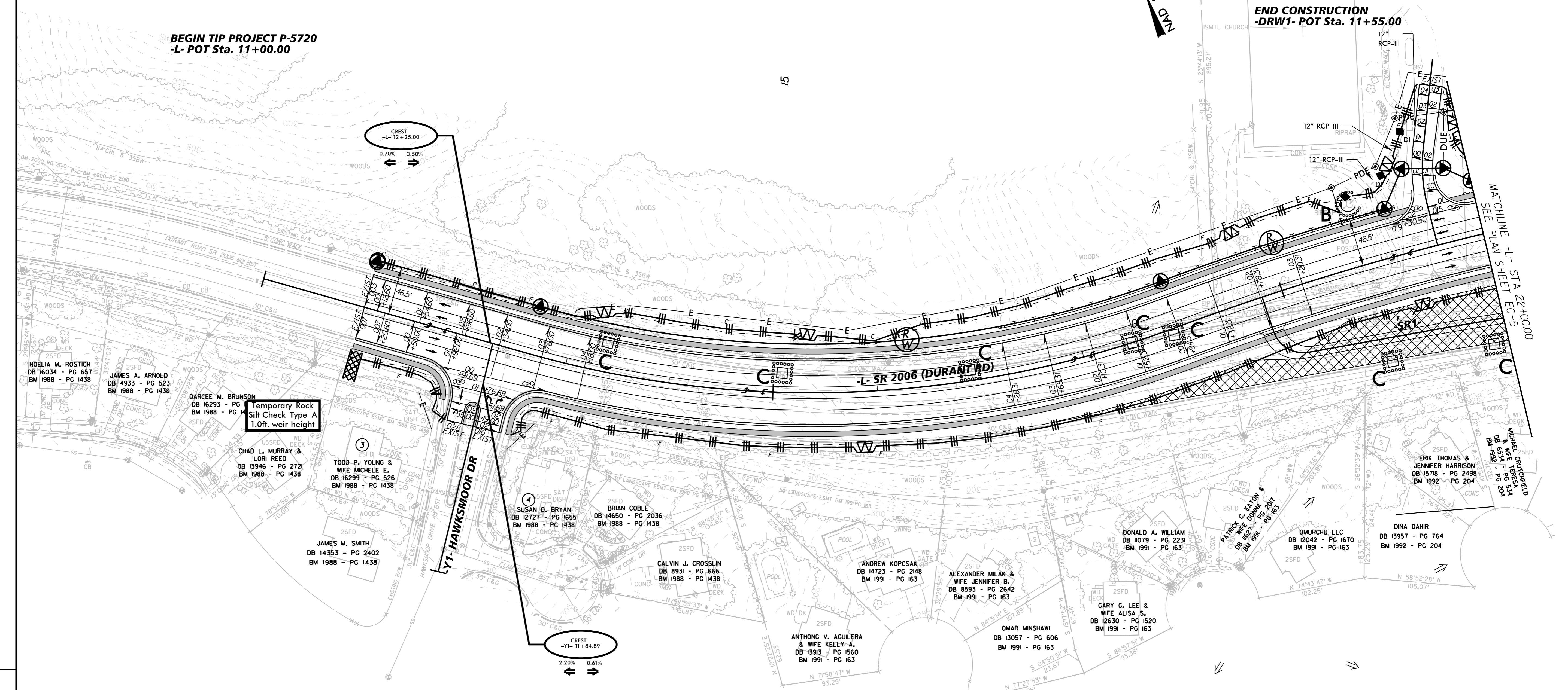
②
 LIFEPOINT CHRISTIAN
 CHURCH INC.
 DB 14386 - PG 2347
 BM 2013 - PG 204
 BM 1982 - PG 677
 BM 2000 - PG 202

REVISIONS

BEGIN TIP PROJECT P-5720
 -L- POT Sta. 11+00.00

END CONSTRUCTION
 -DRWI- POT Sta. 11+55.00

BEGIN CONSTRUCTION
 -Y1- POT Sta. 11+43.00



SEE SHEET NO. 7 FOR -L- PROFILE
 SEE SHEET NO. 8 FOR -Y1- PROFILE
 SEE SHEET NO. 10 FOR -DRWI- PROFILE

12/22/2023