

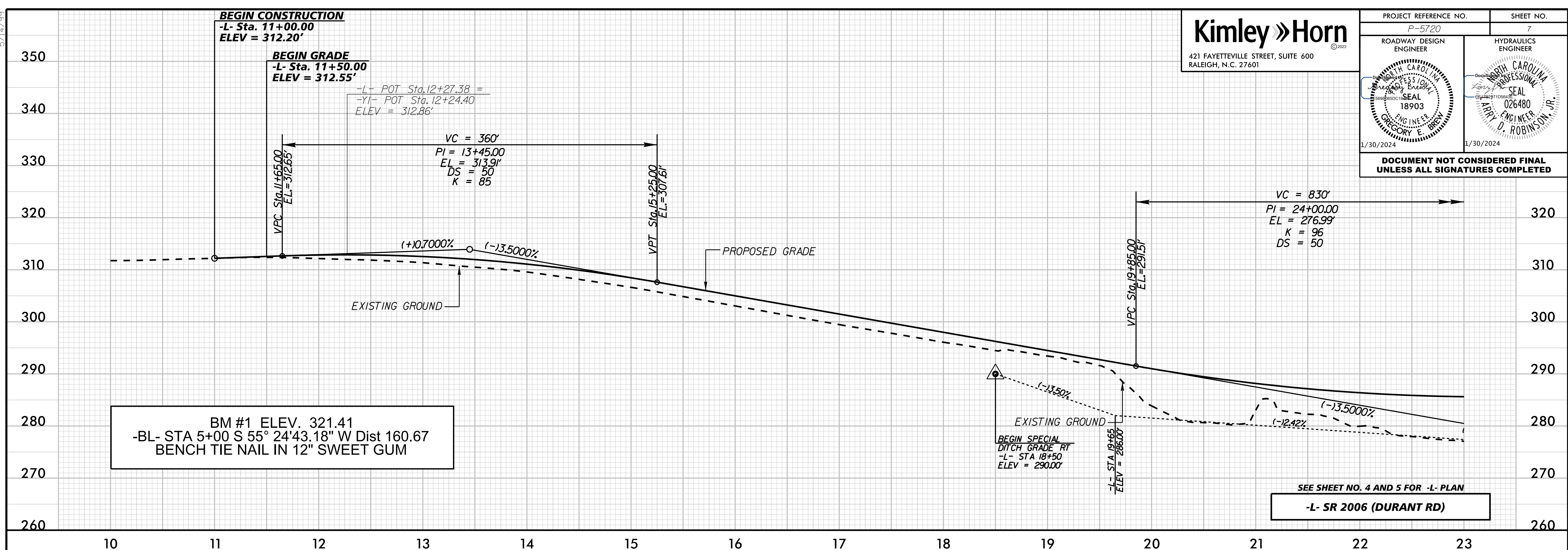
5/14/1999



421 FAYETTEVILLE STREET, SUITE 600  
RALEIGH, N.C. 27601

PROJECT REFERENCE NO. P-5720	SHEET NO. 7
ROADWAY DESIGN ENGINEER	HYDRAULICS ENGINEER
1/30/2024	1/30/2024

**DOCUMENT NOT CONSIDERED FINAL  
UNLESS ALL SIGNATURES COMPLETED**

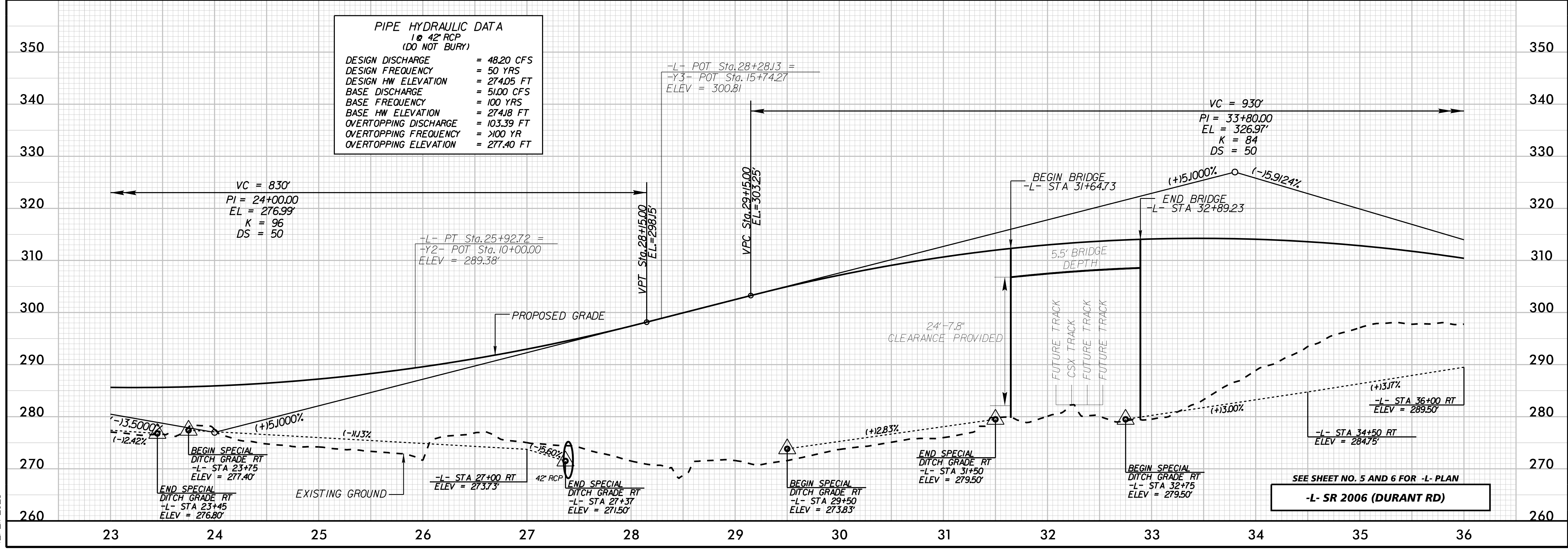


BM #1 ELEV. 321.41  
-BL- STA 5+00 S 55° 24'43.18" W Dist 160.67  
BENCH TIE NAIL IN 12" SWEET GUM

SEE SHEET NO. 4 AND 5 FOR -L- PLAN  
**-L- SR 2006 (DURANT RD)**

**PIPE HYDRAULIC DATA**  
1 @ 42" RCP  
(DO NOT BURY)

DESIGN DISCHARGE	= 48.20 CFS
DESIGN FREQUENCY	= 50 YRS
DESIGN HW ELEVATION	= 274.05 FT
BASE DISCHARGE	= 51.00 CFS
BASE FREQUENCY	= 100 YRS
BASE HW ELEVATION	= 274.18 FT
OVERTOPPING DISCHARGE	= 103.39 FT
OVERTOPPING FREQUENCY	= >100 YR
OVERTOPPING ELEVATION	= 277.40 FT



SEE SHEET NO. 5 AND 6 FOR -L- PLAN  
**-L- SR 2006 (DURANT RD)**

12/21/2023