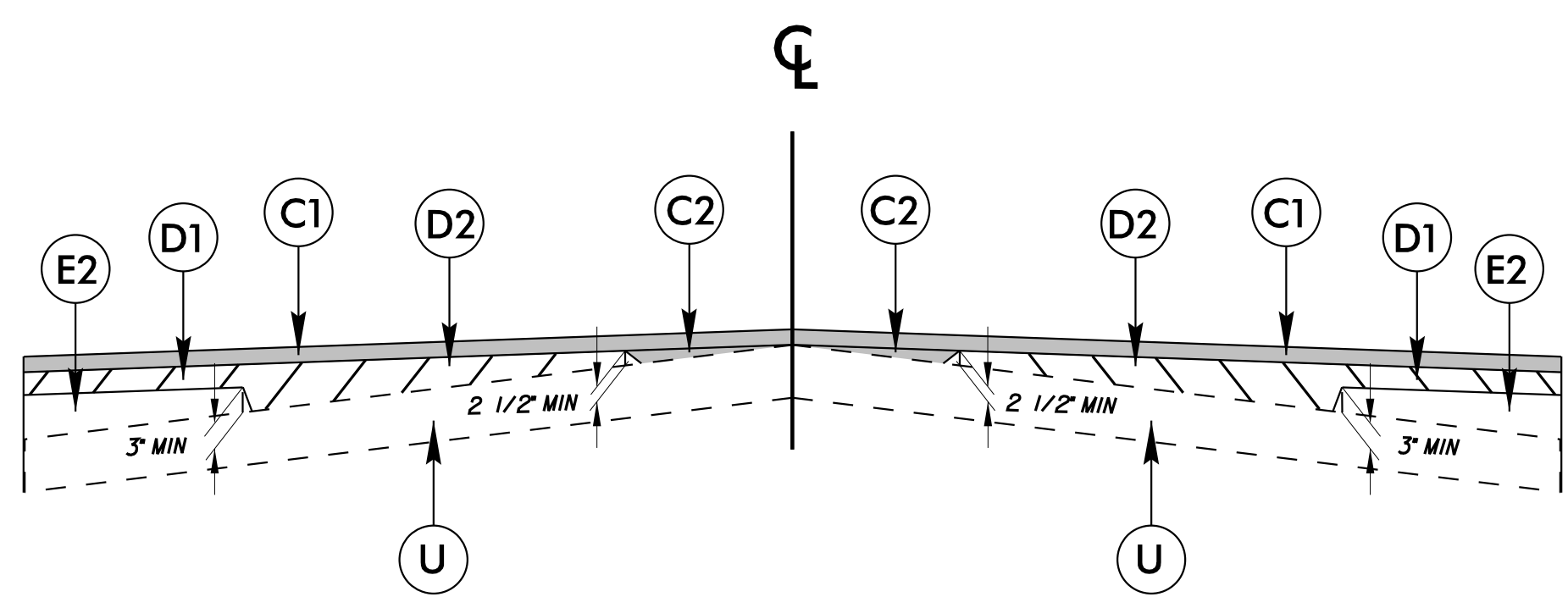
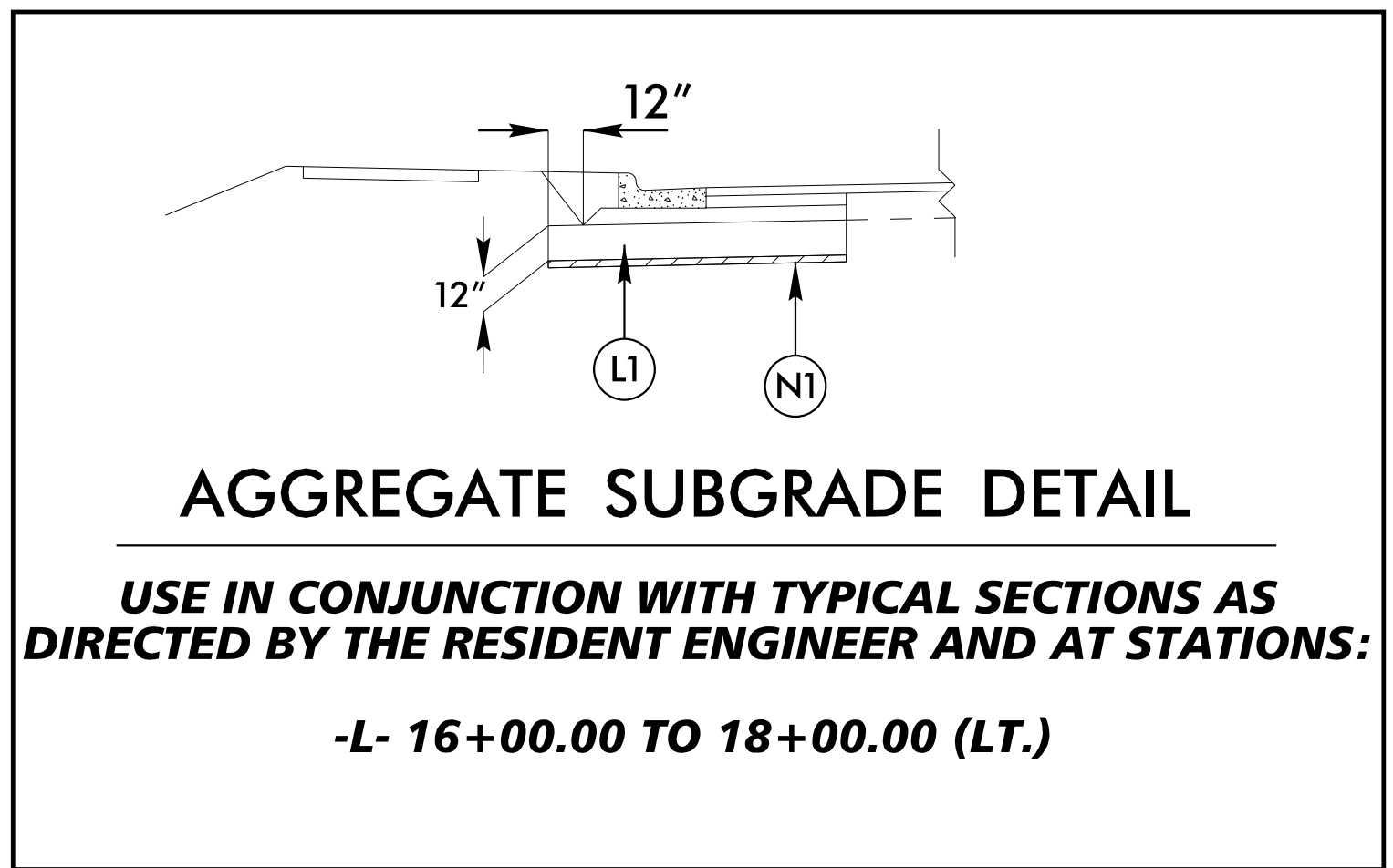


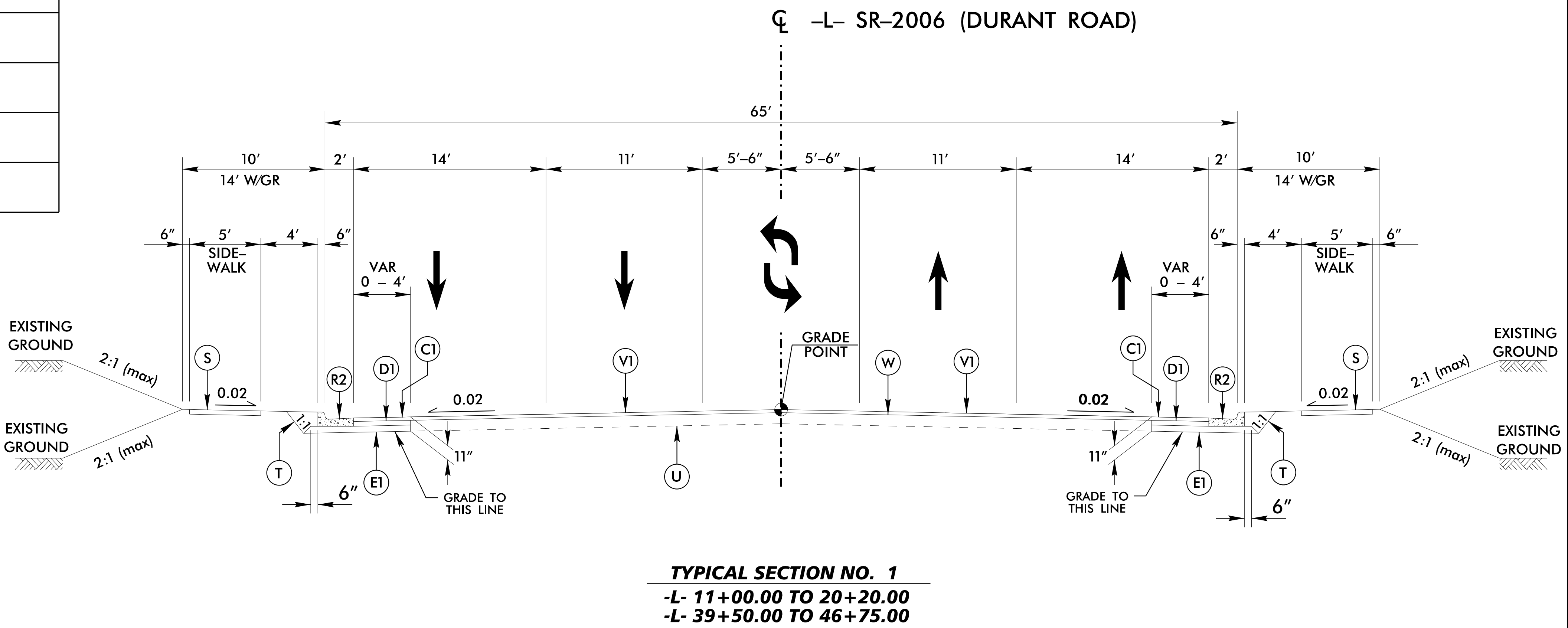
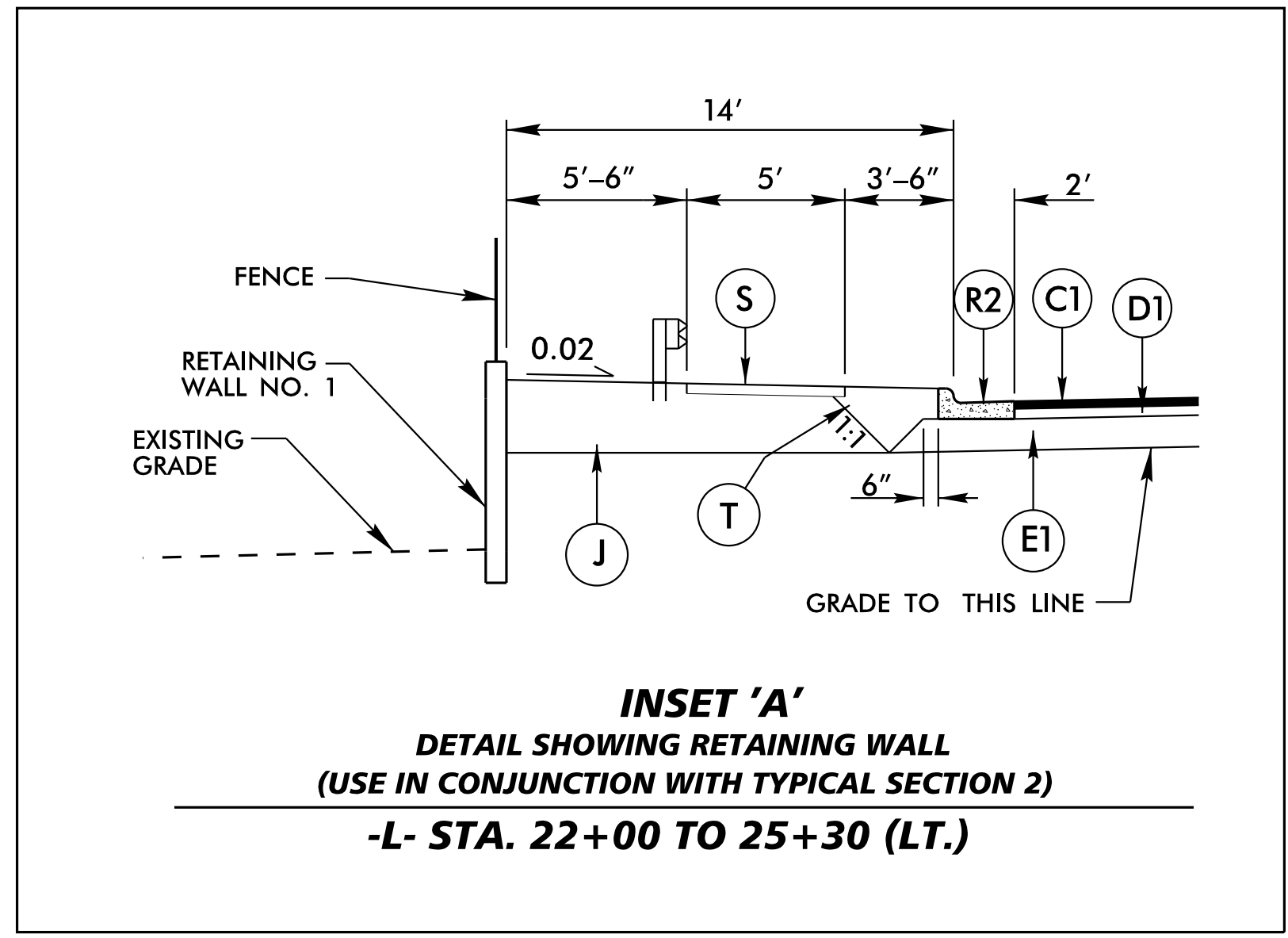
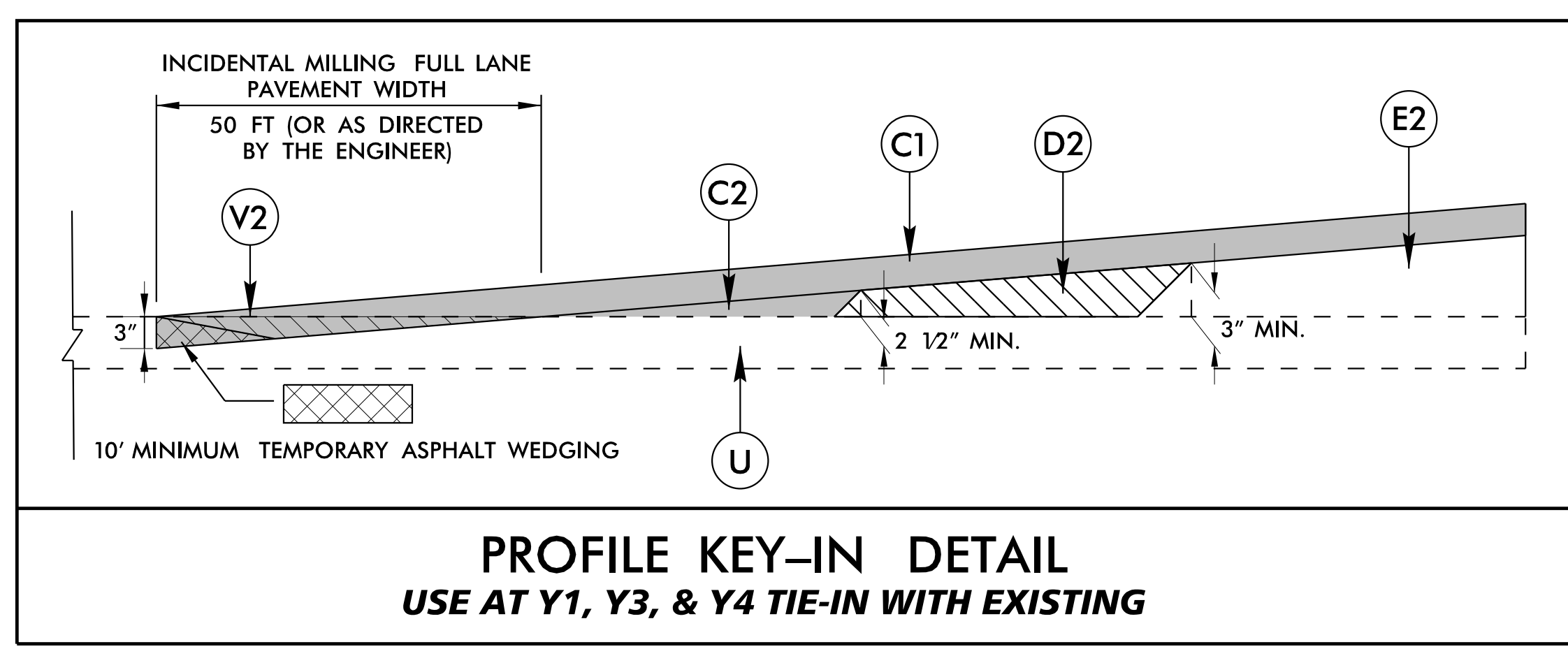
5/14/2024

PAVEMENT SCHEDULE	
C1	PROP. APPROX. 3" ASPHALT CONCRETE SURFACE COURSE, TYPE S9.5B, AT AN AVERAGE RATE OF 165 LBS. PER SQ. YD. IN EACH OF TWO LAYERS.
C2	PROPOSED VAR. DEPTH ASPHALT CONCRETE SURFACE COURSE, TYPE S9.5B, AT AN AVERAGE RATE OF 110 LBS. PER SQ. YD. PER 1" DEPTH TO BE PLACED IN LAYERS NOT TO EXCEED 1 1/2" IN DEPTH.
D1	PROP. APPROX. 4" ASPHALT CONCRETE INTERMEDIATE COURSE, TYPE 119.0C, AT AN AVERAGE RATE OF 456 LBS. PER SQ. YD.
D2	PROPOSED VAR. DEPTH ASPHALT CONCRETE INTERMEDIATE COURSE, TYPE 119.0C, AT AN AVERAGE RATE OF 114 LBS. PER SQ. YD. PER 1" DEPTH TO BE PLACED IN LAYERS NOT LESS THAN 2 1/2" IN DEPTH OR GREATER THAN 4" IN DEPTH.
E1	PROP. APPROX. 4" ASPHALT CONCRETE BASE COURSE, TYPE B25.0C, AT AN AVERAGE RATE OF 456 LBS. PER SQ. YD.
E2	PROPOSED VAR. DEPTH ASPHALT CONCRETE BASE COURSE, TYPE B25.0C, AT AN AVERAGE RATE OF 114 LBS. PER SQ. YD. PER 1" DEPTH TO BE PLACED IN LAYERS NOT LESS THAN 3" OR GREATER THAN 5.5" IN DEPTH.
J	PROP. VARIABLE DEPTH SHOULDER CONSTRUCTION, TYPE ABC(M), SEE SPECIAL PROVISION
J1	PROP. 6" AGGREGATE BASE COURSE.
L1	CLASS IV SUBGRADE STABILIZATION
N1	GEOTEXTILE FOR SUBGRADE STABILIZATION
P	PRIME COAT AT A RATE OF 0.35 GAL. PER SQ. YD.
R1	1'-6" CONCRETE CURB AND GUTTER.
R2	2'-6" CONCRETE CURB AND GUTTER.
S	PROPOSED 4" CONCRETE SIDEWALK.
T	EARTH MATERIAL.
U	EXISTING PAVEMENT.
V1	PROPOSED 3" MILLING
V2	INCIDENTAL MILLING
W	VARIABLE DEPTH ASPHALT PAVEMENT (SEE STANDARD METHOD OF WEDGING DETAIL)

NOTE: PAVEMENT SLOPES ARE 1:1 UNLESS SHOWN OTHERWISE



DETAIL SHOWING METHOD OF WEDGING



Kimley Horn
 421 FAYETTEVILLE STREET, SUITE 600
 RALEIGH, N.C. 27601

PROJECT REFERENCE NO. P-5720	SHEET NO. 2A-1
ROADWAY DESIGN ENGINEER GREGORY E. GREGORY	PAVEMENT DESIGN ENGINEER ANDREW D. WARGO
SEAL 18903 1/26/2024	SEAL 044590 1/26/2024
DOCUMENT NOT CONSIDERED FINAL UNLESS ALL SIGNATURES COMPLETED	

REVISIONS

1/26/2024