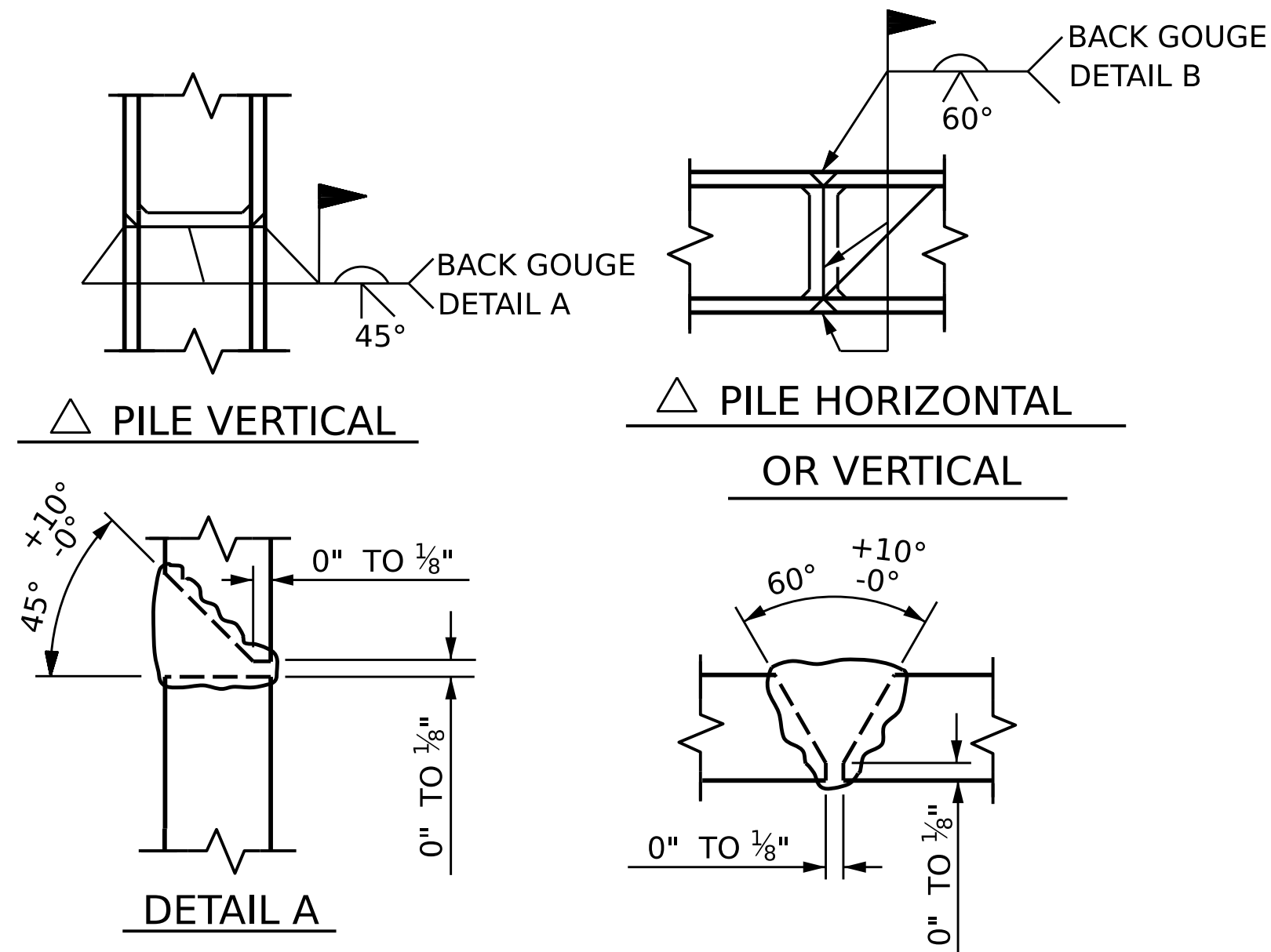


BAGGED STONE AND PIPE SHALL BE PLACED IMMEDIATELY AFTER COMPLETION OF END BENT EXCAVATION. PIPE MAY BE EITHER CONCRETE, CORRUGATED STEEL, CORRUGATED ALUMINUM ALLOY, OR CORRUGATED PLASTIC. PERFORATED PIPE WILL NOT BE ALLOWED.

BAGGED STONE SHALL REMAIN IN PLACE UNTIL THE ENGINEER DIRECTS THAT IT BE REMOVED. THE CONTRACTOR SHALL REMOVE AND DISPOSE OF SILT ACCUMULATIONS AT BAGGED STONE WHEN SO DIRECTED BY THE ENGINEER. BAGS SHALL BE REMOVED AND REPLACED WHENEVER THE ENGINEER DETERMINES THAT THEY HAVE DETERIORATED AND LOST THEIR EFFECTIVENESS.

NO SEPARATE PAYMENT WILL BE MADE FOR THIS WORK AND THE ENTIRE COST OF THIS WORK SHALL BE INCLUDED IN THE UNIT CONTRACT PRICE BID FOR THE SEVERAL PAY ITEMS.

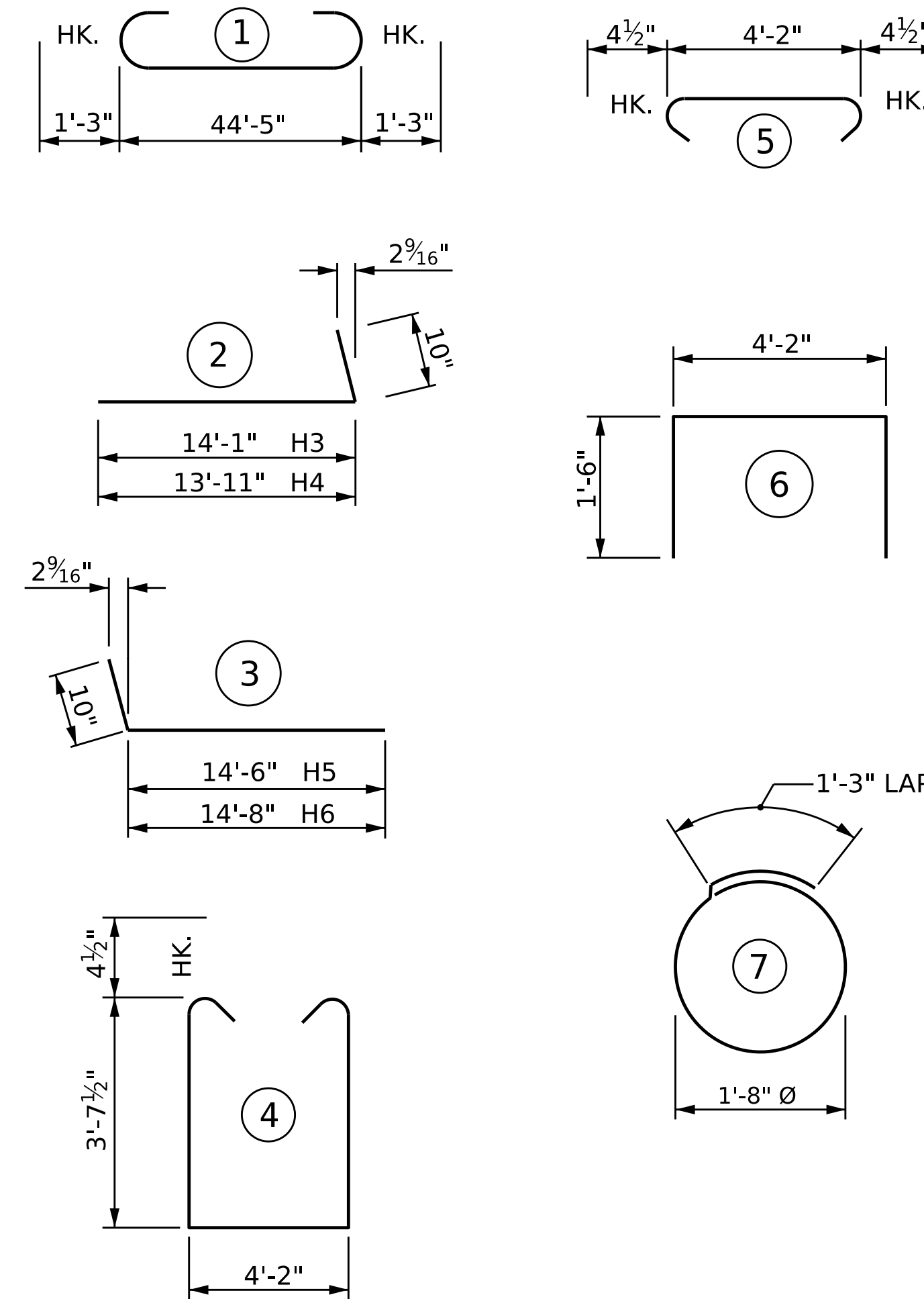
TEMPORARY DRAINAGE AT END BENT



△ POSITION OF PILE DURING WELDING.

PILE SPLICE DETAILS

BAR TYPES



ALL BAR DIMENSIONS ARE OUT TO OUT

BILL OF MATERIAL

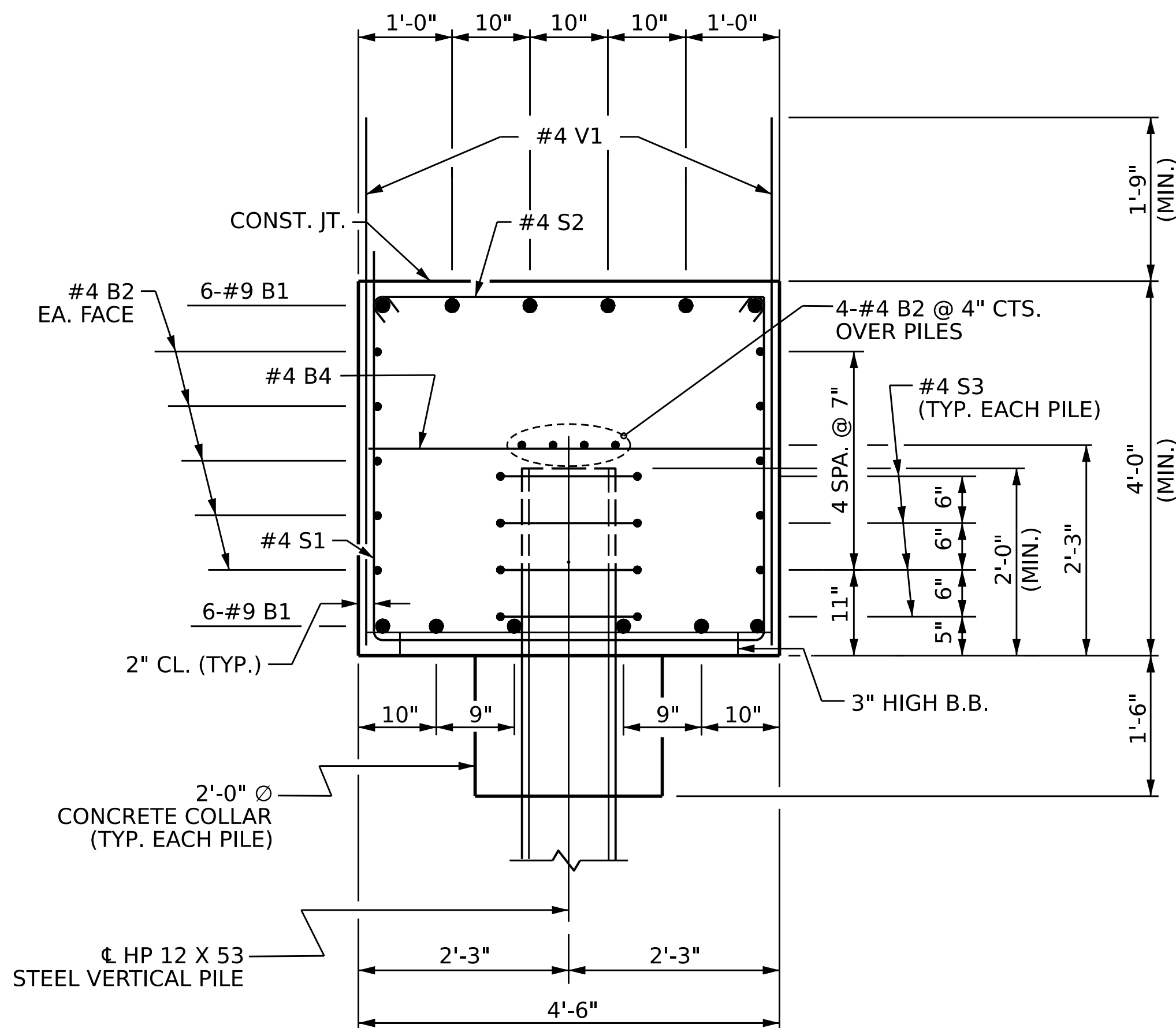
END BENT 2

BAR	NO.	SIZE	TYPE	LENGTH	WEIGHT
B1	12	#9	1	46'-11"	1914
B2	28	#4	STR	23'-6"	440
B3	6	#4	STR	9'-10"	39
B4	12	#4	STR	4'-2"	33
H3	6	#5	2	14'-11"	93
H4	6	#5	2	14'-9"	92
H5	6	#5	3	15'-4"	96
H6	6	#5	3	15'-6"	97
S1	57	#4	4	12'-2"	463
S2	57	#4	5	4'-11"	187
S3	36	#4	7	6'-6"	156
U1	8	#4	6	7'-2"	38
V1	72	#4	STR	5'-7"	269
V2	54	#5	STR	9'-4"	526

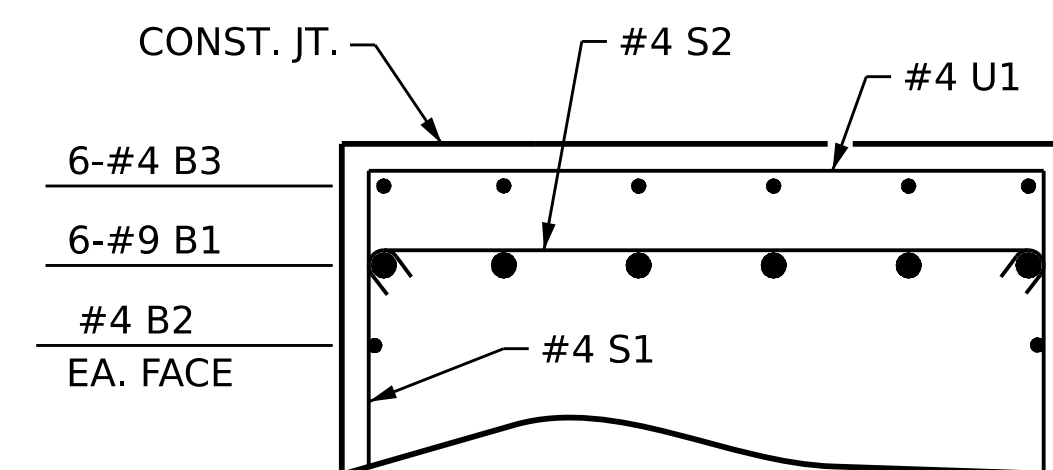
REINFORCING STEEL LBS. 4,444

CLASS A CONCRETE

POUR #1 CU. YDS. 40.0
(CAP, CONCRETE COLLARS & LOWER PART OF WINGS)



SECTION A-A



PARTIAL SECTION B-B



DocuSigned by:
Francesca Lea
B79DAD86D584EF
05/01/2024

PROJECT NO. BR-0093

ROCKINGHAM COUNTY

STATION: 17+85.52 -L-

SHEET 3 OF 3

STATE OF NORTH CAROLINA
DEPARTMENT OF TRANSPORTATION
RALEIGH

SUBSTRUCTURE

END BENT 2
INTEGRAL

REVISIONS

NO.	BY:	DATE:	NO.	BY:	DATE:	SHEET NO.
1			3			S-34
2			4			TOTAL SHEETS 36

DOCUMENT NOT CONSIDERED FINAL UNLESS ALL SIGNATURES COMPLETED

DRAWN BY: E. BAYISSA / Q.T. NGUYEN DATE: 11/2023
CHECKED BY: F. LEA DATE: 12/2023
DESIGN ENGINEER OF RECORD: E. BAYISSA DATE: 09/2023