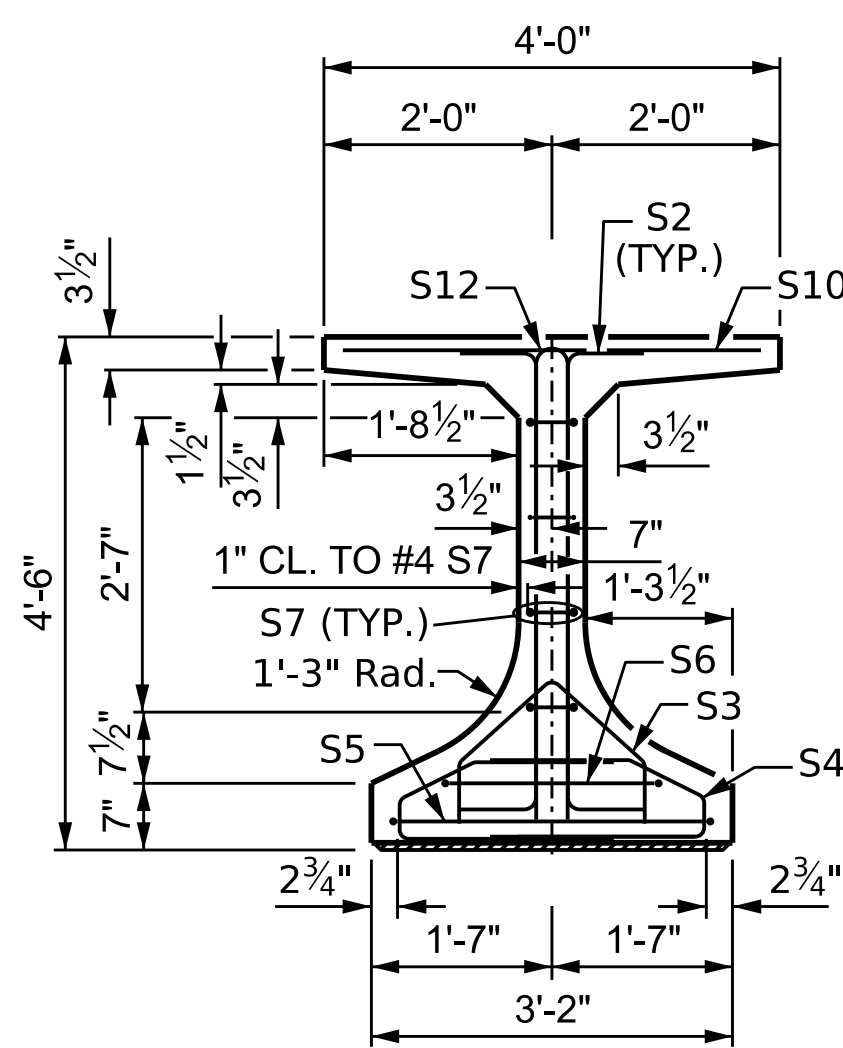
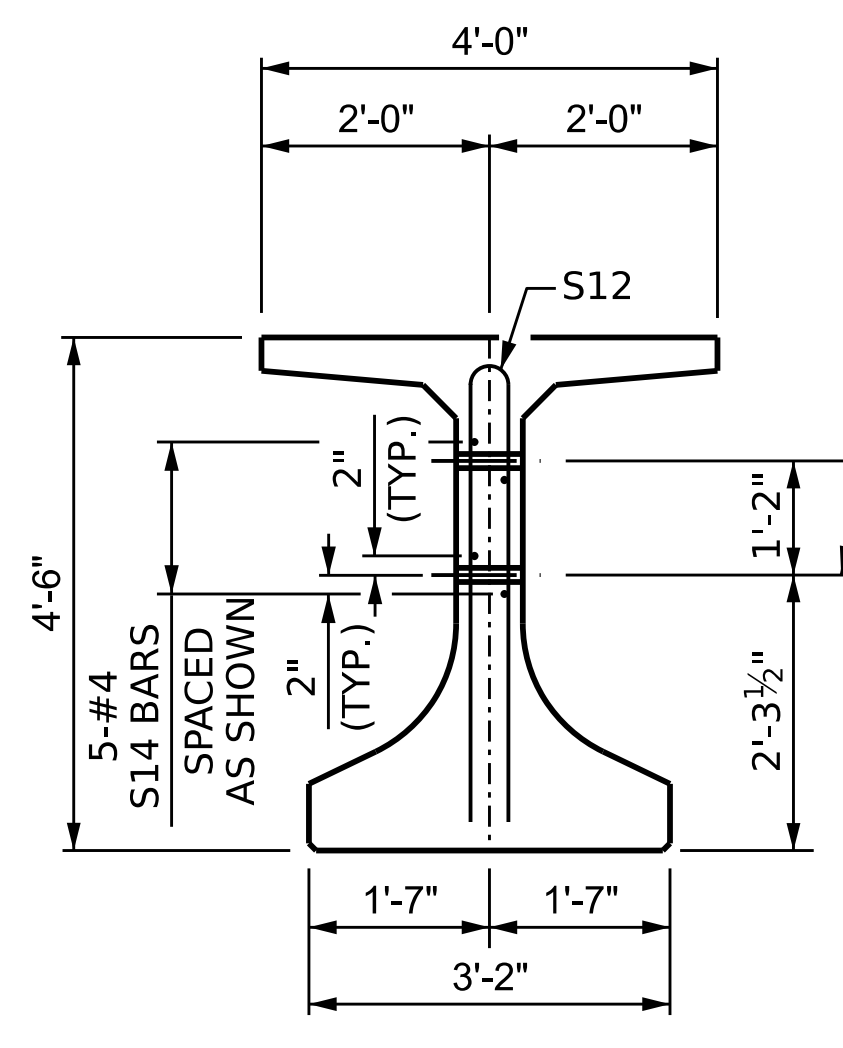


SECTION A-A

* FOR S11 BARS, SEE DETAIL "C" OF "FLORIDA I BEAM INTEGRAL END BENT DETAILS" SHEET



SECTION B-B



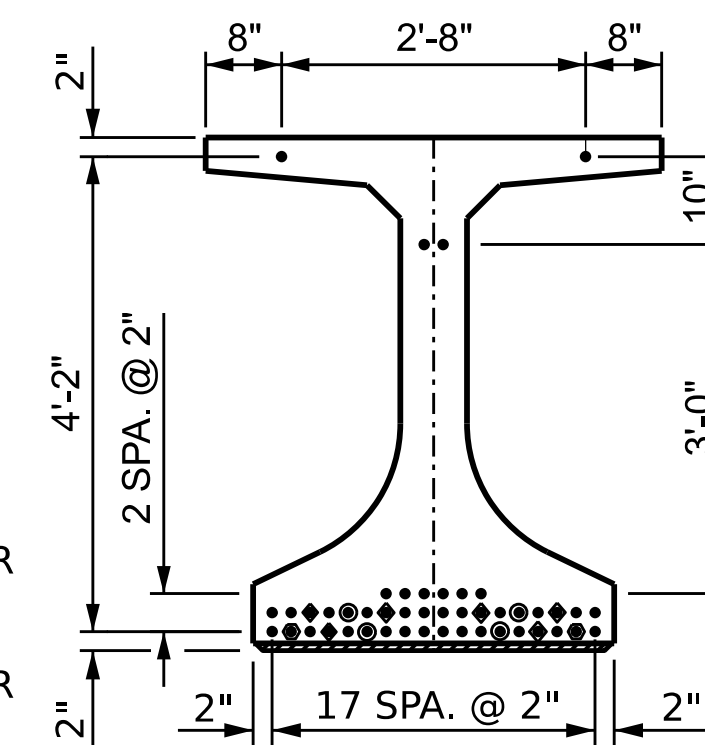
SECTION C-C

(S8, S9 AND S10 BARS NOT SHOWN)

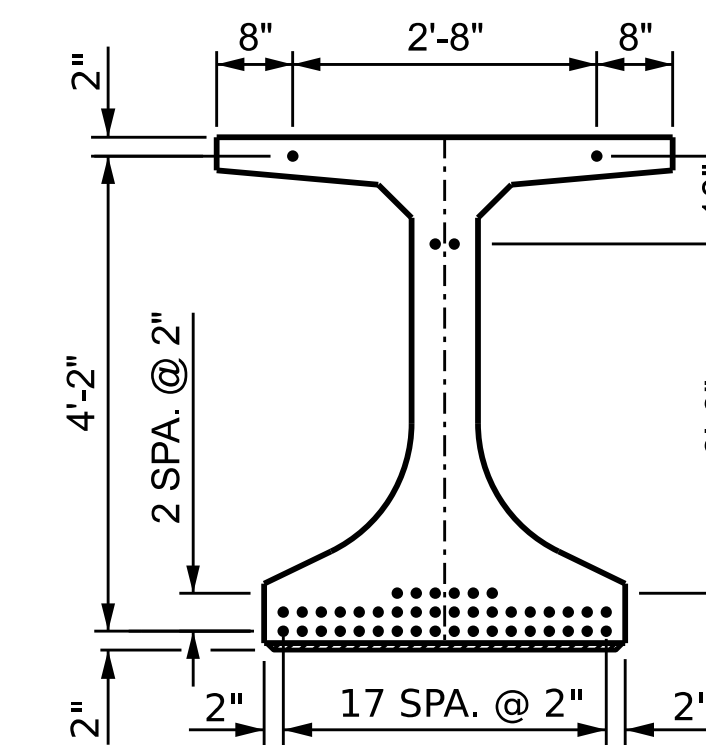
1 1/2" Ø FORMED HOLE. (SEE FRAMING PLAN FOR LOCATION)

DEBONDING LEGEND

- FULLY BONDED STRANDS
- STRANDS DEBONDED FOR 10'-0" FROM END OF GIRDER
- ◇ STRANDS DEBONDED FOR 16'-0" FROM END OF GIRDER
- ⊙ STRANDS DEBONDED FOR 18'-0" FROM END OF GIRDER



AT END OF GIRDER



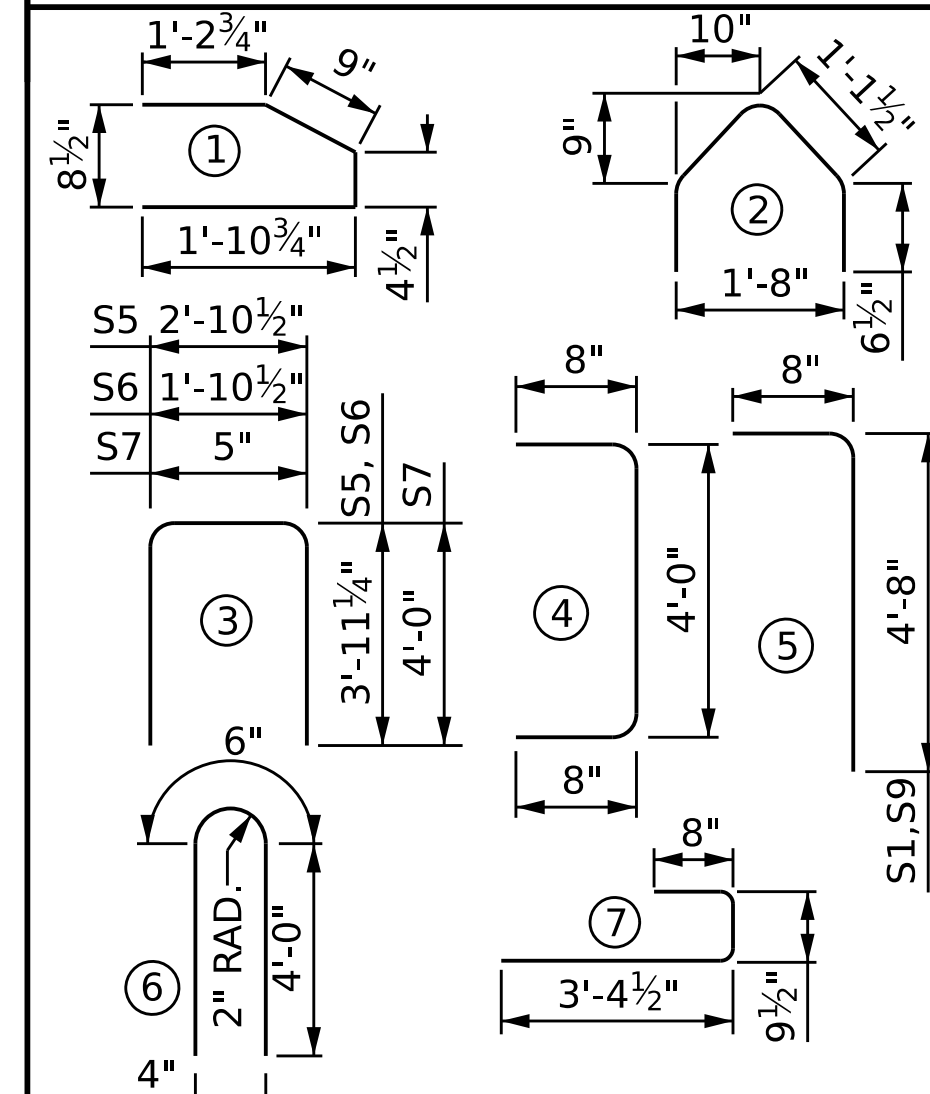
AT C OF GIRDER

0.6" Ø LOW RELAXATION STRAND LAYOUT

0.6" Ø L. R. GRADE 270 STRANDS		
AREA (SQUARE INCHES)	ULTIMATE STRENGTH (LBS. PER STRAND)	APPLIED PRESTRESS (LBS. PER STRAND)
0.217	58,600	43,950

REINFORCING STEEL FOR ONE GDR				
BAR NUMBER	SIZE	TYPE	LENGTH	WEIGHT
S1	44	#5	5'-4"	245
S2	28	#5	4'-4"	156
S3	34	#3	2'-4"	43
S4	68	#3	1'-3"	109
S5	1	#5	3'-10'-9"	11
S6	2	#5	3'-9'-9"	20
S7	8	#4	3'-8"	45
S8	198	#5	7'-4'-10"	998
S9	154	#4	5'-4"	549
S10	56	#5	STR	214
* S11	20	#6	STR	140
S12	20	#5	6'-8"	177
S13	1	#3	STR	1
S14	10	#4	STR	53

BAR TYPES



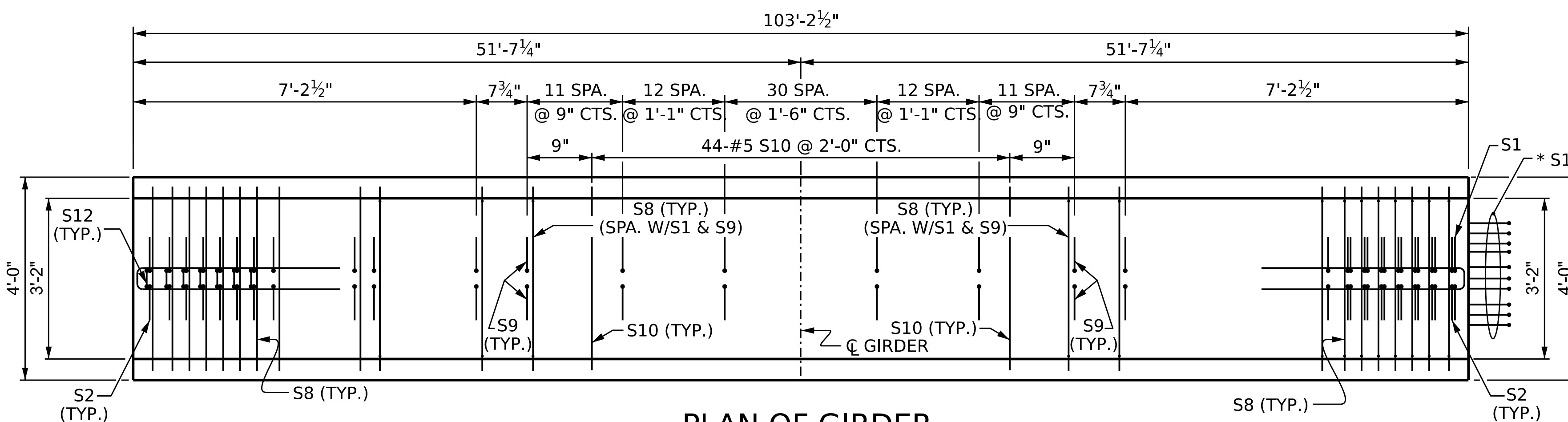
ALL BAR DIMENSIONS ARE OUT-TO-OUT

QUANTITIES FOR ONE GIRDER

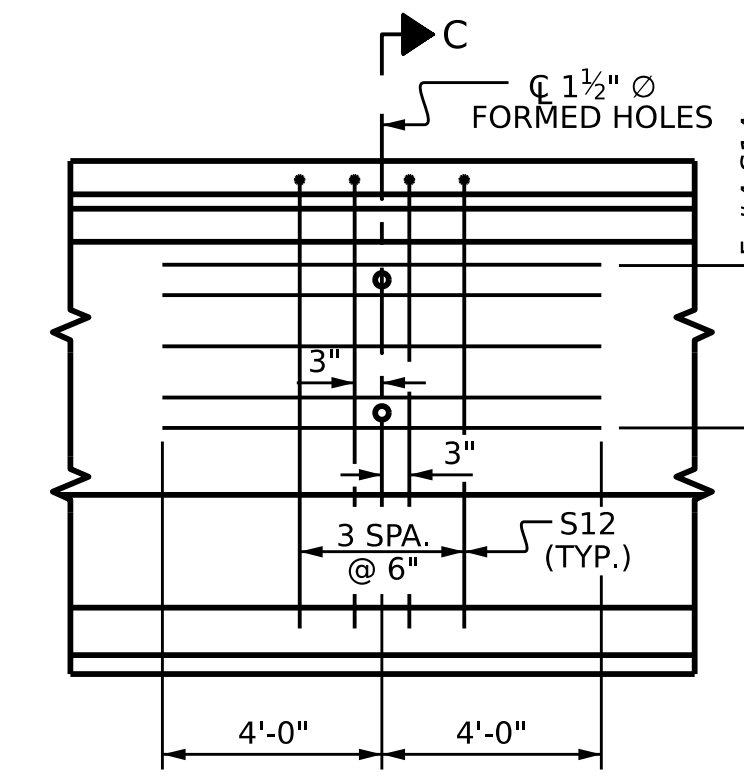
REINFORCING STEEL	8000 PSI CONCRETE	0.6" Ø L.R. STRANDS
LB.	C.Y.	No.
2761	24.8	46

GIRDERS REQUIRED

NUMBER	LENGTH	TOTAL LENGTH
4	103'-2 1/2"	412'-10"

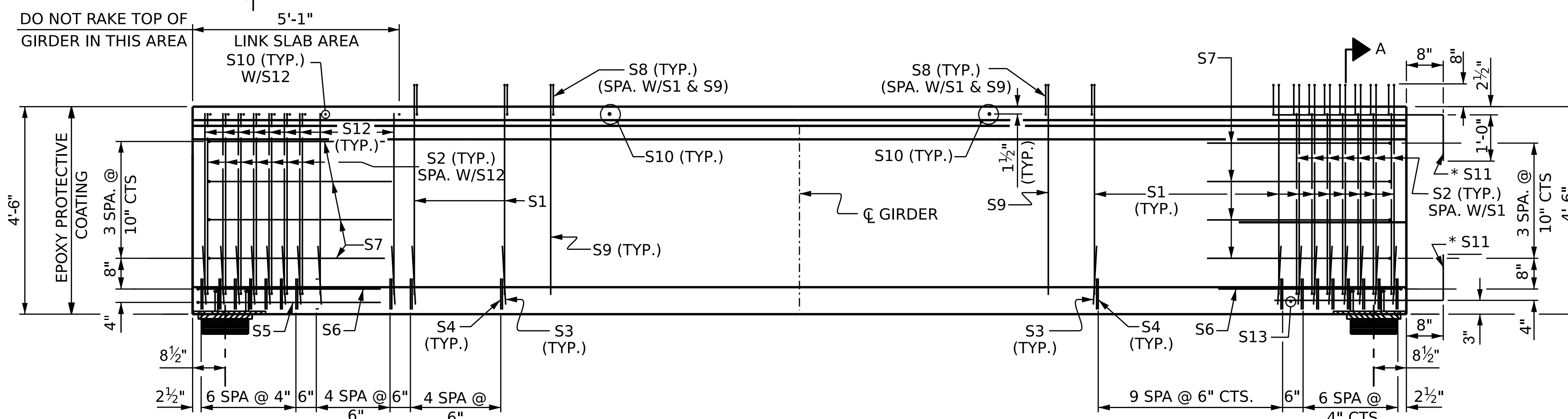


PLAN OF GIRDER



PARTIAL ELEVATION

SHOWING INTERMEDIATE STEEL DIAPHRAGM REINFORCING STEEL FOR ALL GIRDERS



ELEVATION OF GIRDER

INTEGRAL END BENT

* NOTE:
S11 BARS SHALL BE BENT BEFORE SHIPMENT. HEAT BENDING SHALL NOT BE ALLOWED.

ASSEMBLED BY : E. BAYISSA DATE : 07/2023
 CHECKED BY : Z. MALIK DATE : 10/2023
 DRAWN BY : BNB 01/21
 CHECKED BY : AAI 08/22

DOCUMENT NOT CONSIDERED FINAL UNLESS ALL SIGNATURES COMPLETED



PROJECT NO. BR-0093
 ROCKINGHAM COUNTY
 STATION: 17+85.52 -L-

SHEET 3 OF 4

STATE OF NORTH CAROLINA
 DEPARTMENT OF TRANSPORTATION
 RALEIGH
 STANDARD
 54" FIB PRESTRESSED
 CONCRETE GIRDER
 LINK SLAB
 SPAN C

REVISIONS				SHEET NO.
NO.	BY:	DATE:	NO.	DATE:
1			3	
2			4	

STD. NO. FIB54 (Sht. 2)