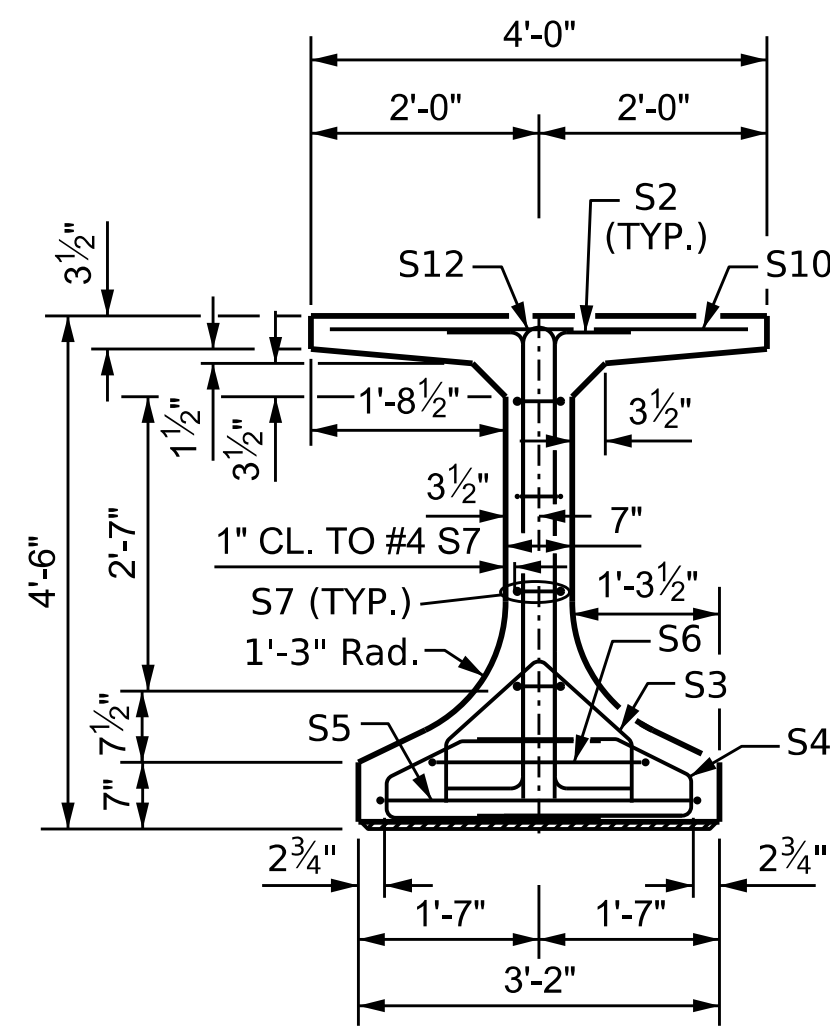
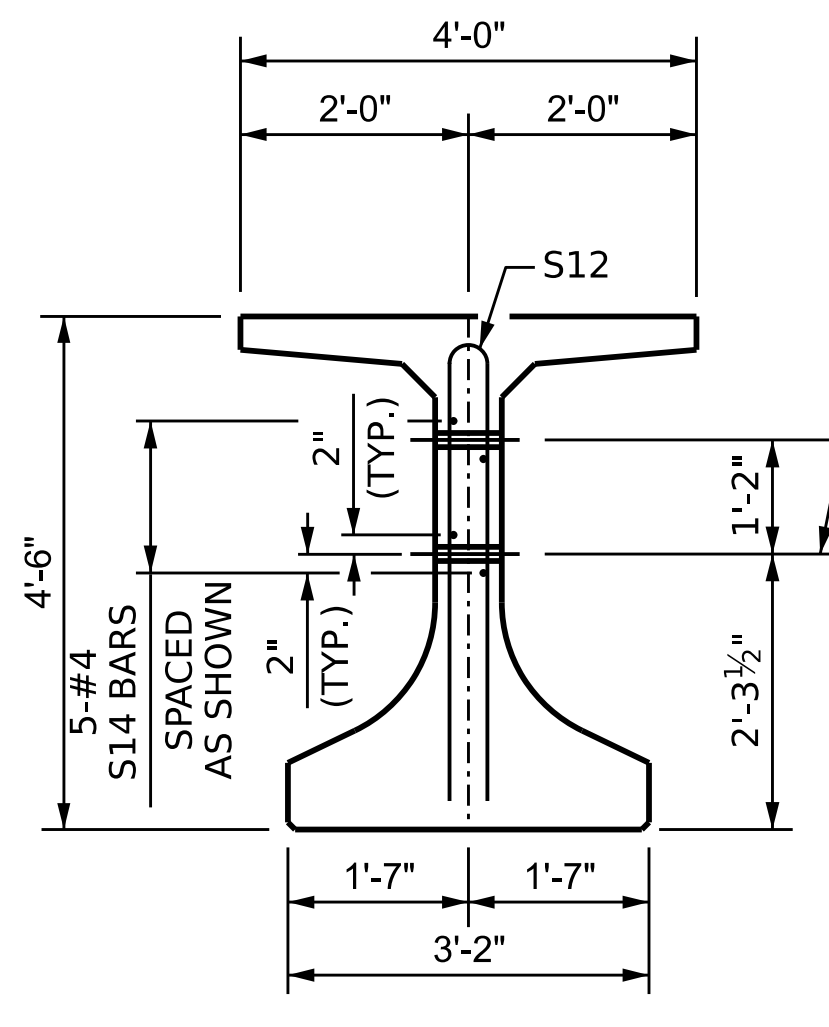


SECTION A-A

* FOR S11 BARS, SEE DETAIL "C" OF "FLORIDA I BEAM INTEGRAL END BENT DETAILS" SHEET



SECTION B-B

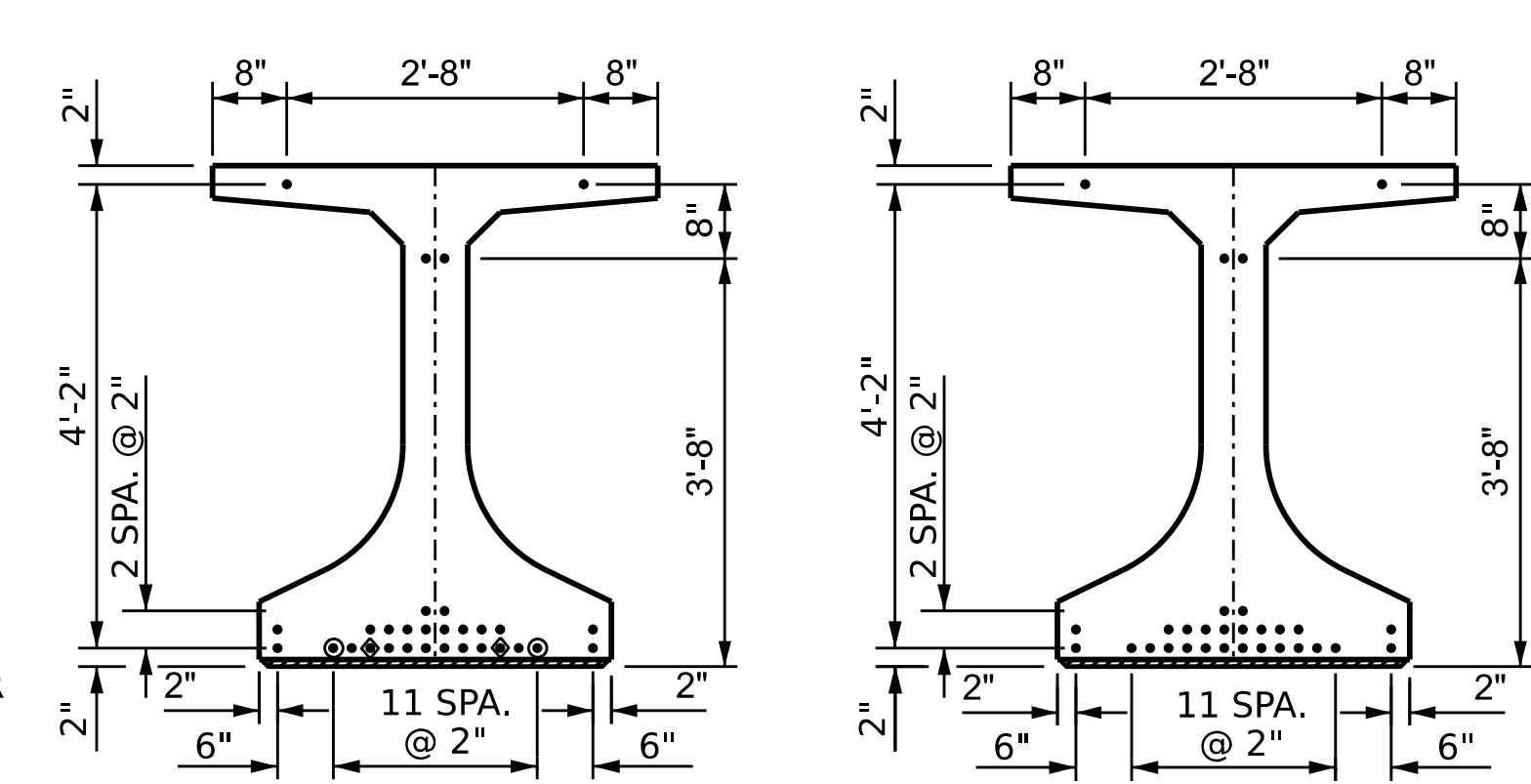


SECTION C-C

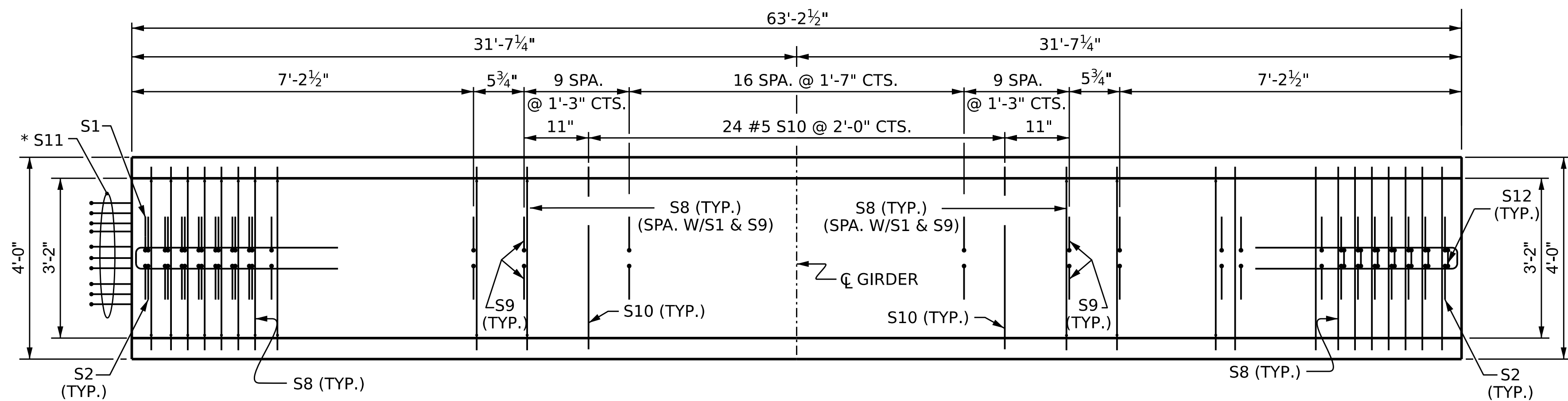
(S8, S9 AND S10 BARS NOT SHOWN)

1 1/2" Ø FORMED HOLE. (SEE FRAMING PLAN FOR LOCATION)

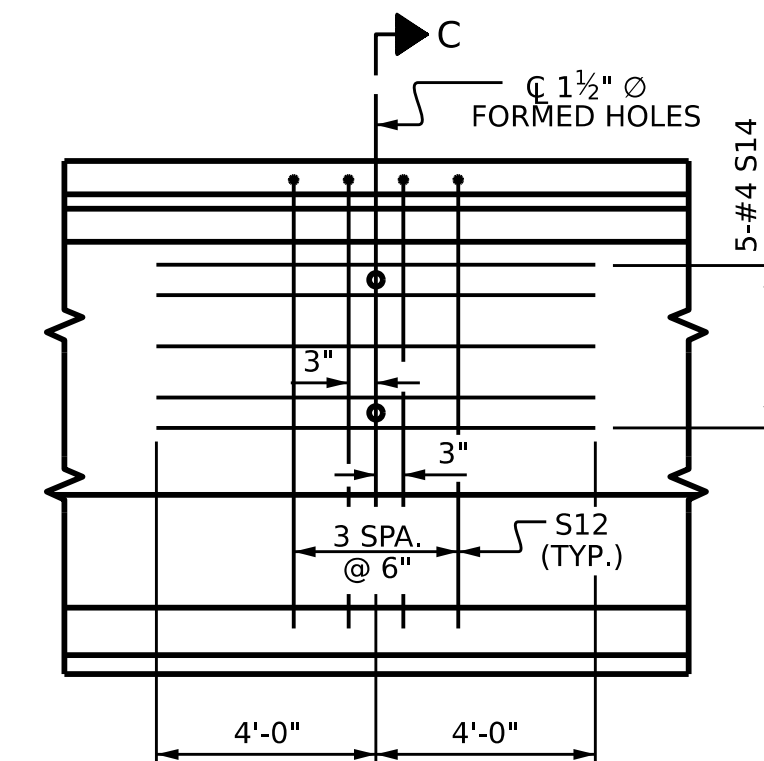
- DEBONDING LEGEND**
- FULLY BONDED STRANDS
 - STRANDS DEBONDED FOR 8'-0" FROM END OF GIRDER
 - STRANDS DEBONDED FOR 12'-0" FROM END OF GIRDER



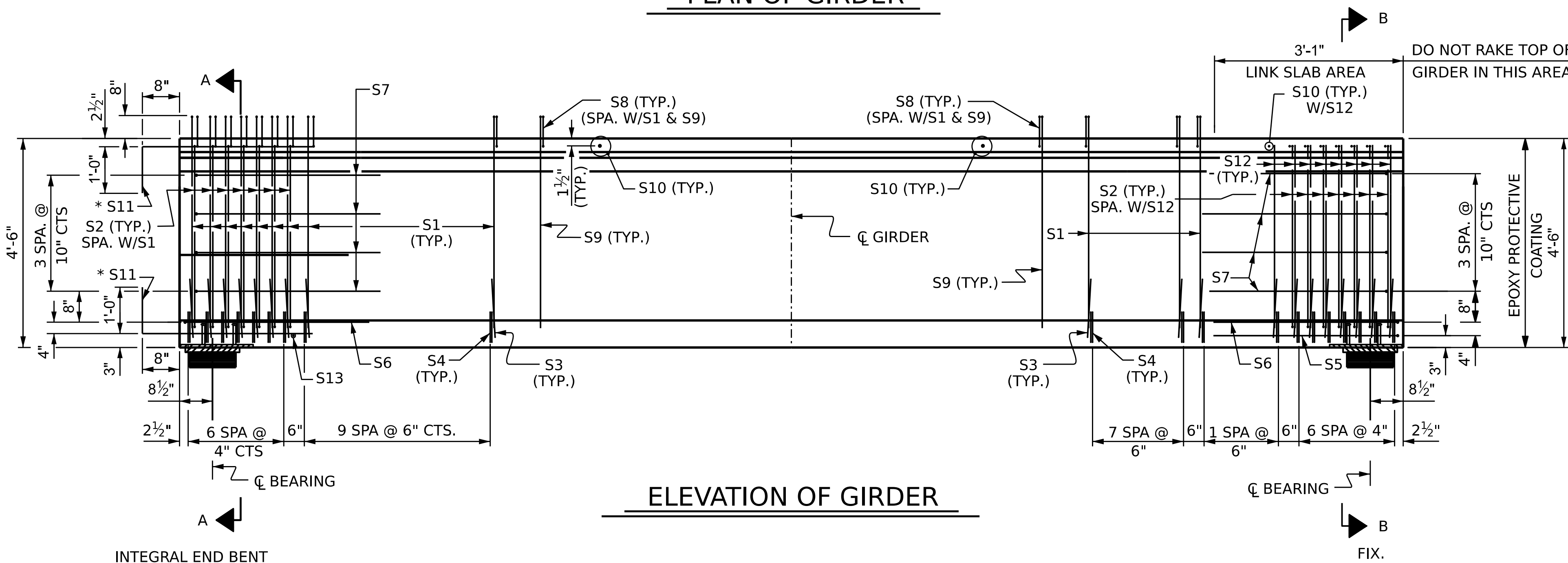
0.6" Ø LOW RELAXATION STRAND LAYOUT



PLAN OF GIRDER



PARTIAL ELEVATION
SHOWING INTERMEDIATE STEEL DIAPHRAGM REINFORCING STEEL FOR ALL GIRDERS.

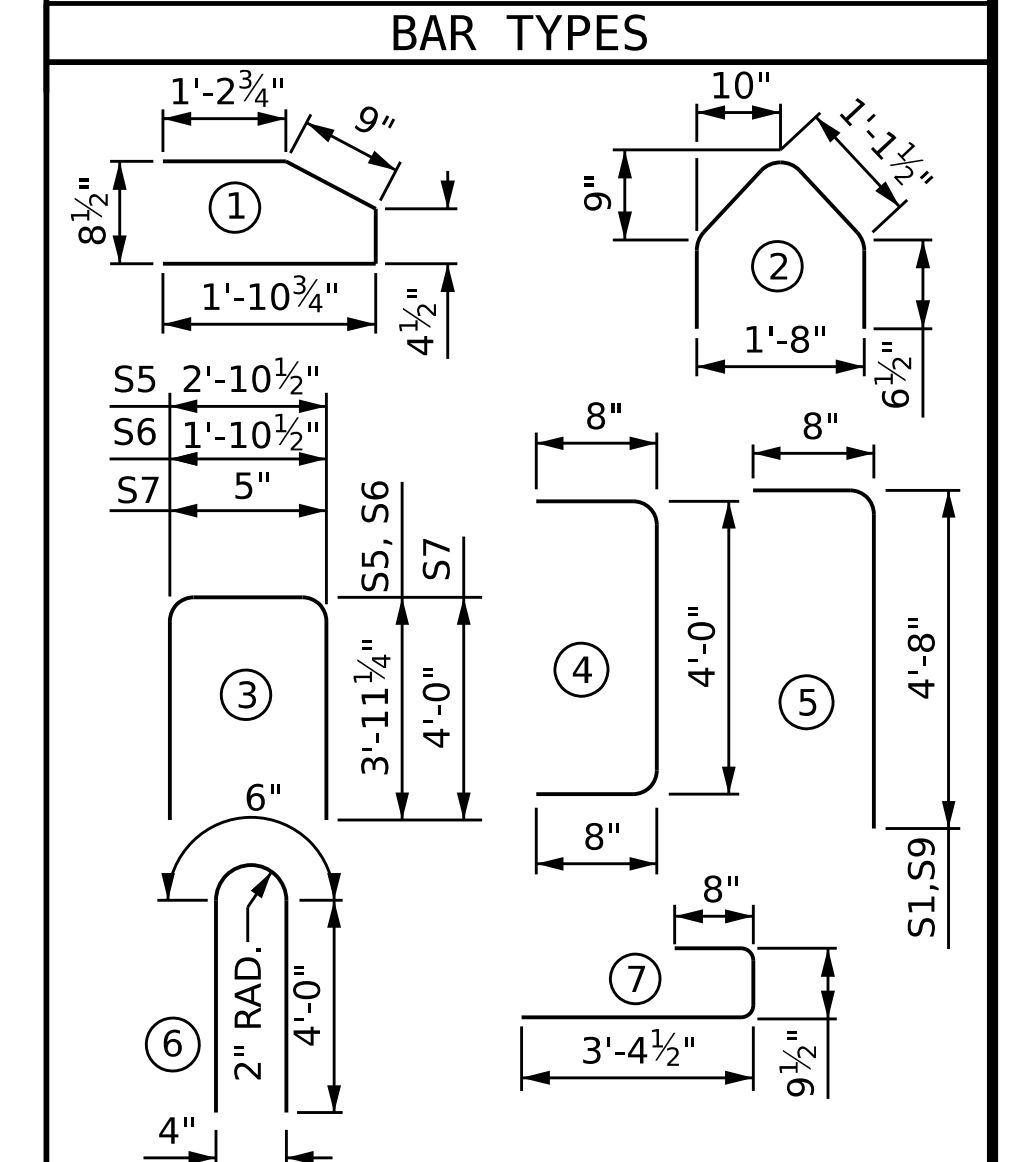


ELEVATION OF GIRDER

INTEGRAL END BENT

* NOTE:
S11 BARS SHALL BE BENT BEFORE SHIPMENT. HEAT BENDING SHALL NOT BE ALLOWED.

0.6" Ø L. R. GRADE 270 STRANDS				
AREA (SQUARE INCHES)	ULTIMATE STRENGTH (LBS. PER STRAND)	APPLIED PRESTRESS (LBS. PER STRAND)		
0.217	58,600	43,950		
REINFORCING STEEL FOR ONE GDR				
BAR NUMBER	SIZE	TYPE	LENGTH	WEIGHT
S1	#5	5	5'-4"	289
S2	#5	4	5'-4"	156
S3	#3	2	3'-4"	43
S4	#3	1	4'-3"	109
S5	#5	3	10'-9"	11
S6	#5	3	9'-9"	20
S7	#4	3	8'-5"	45
S8	#5	7	4'-10"	615
S9	#4	5	5'-4"	249
S10	#5	STR	3'-8"	122
*S11	#6	STR	4'-8"	140
S12	#5	6	8'-6"	106
S13	#3	STR	2'-10"	1
S14	#4	STR	8'-0"	27



ALL BAR DIMENSIONS ARE OUT-TO-OUT

QUANTITIES FOR ONE GIRDER		
REINFORCING STEEL	6500PSI CONCRETE	0.6" Ø L.R. STRANDS
LB.	C.Y.	No.
1934	15.2	30

GIRDERS REQUIRED		
NUMBER	LENGTH	TOTAL LENGTH
4	63'-2 1/2"	252'-10"

PROJECT NO. BR-0093
ROCKINGHAM COUNTY
 STATION: 17+85.52 -L-

SHEET 1 OF 4

STATE OF NORTH CAROLINA
 DEPARTMENT OF TRANSPORTATION
 RALEIGH

**STANDARD
 54" FIB PRESTRESSED
 CONCRETE GIRDER
 INTEGRAL END BENT
 LINK SLAB
 SPAN A**



DOCUMENT NOT CONSIDERED FINAL UNLESS ALL SIGNATURES COMPLETED

REVISIONS				SHEET NO.
NO.	BY:	DATE:	NO.	DATE:
1			3	
2			4	

S-14
TOTAL SHEETS
36

ASSEMBLED BY : E. BAYISSA DATE : 07/2023
 CHECKED BY : Z. MALIK DATE : 10/2023
 DRAWN BY : BNB 01/21
 CHECKED BY : AAI 08/22