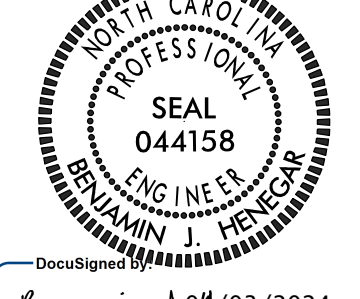
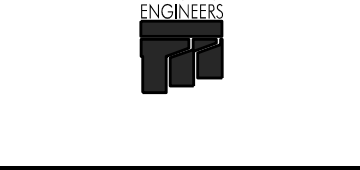


Documents: Han Nguyen 04/03/2024

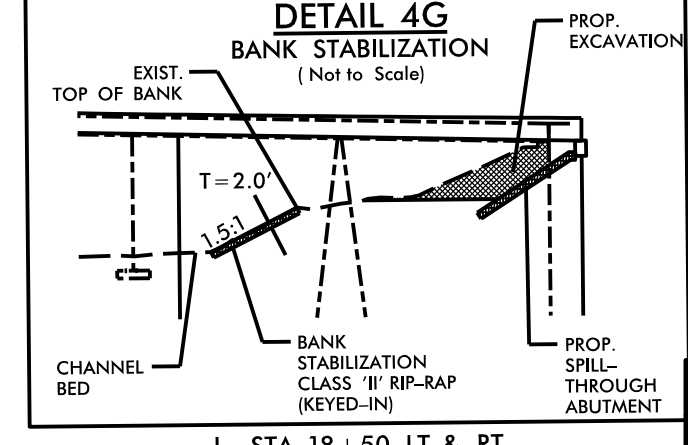
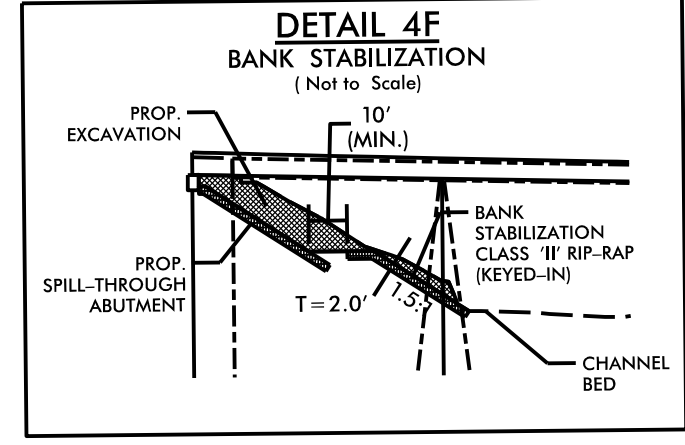
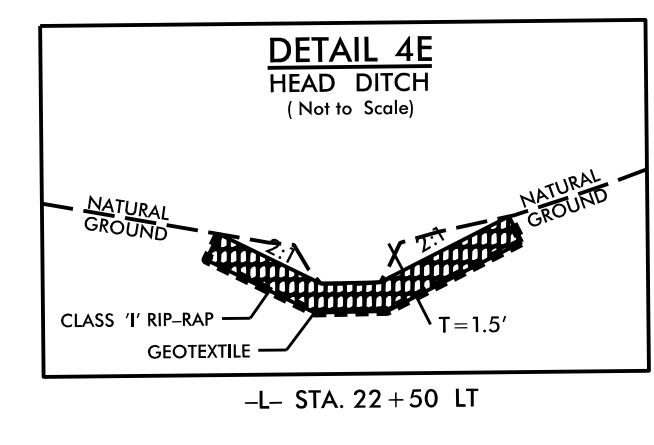
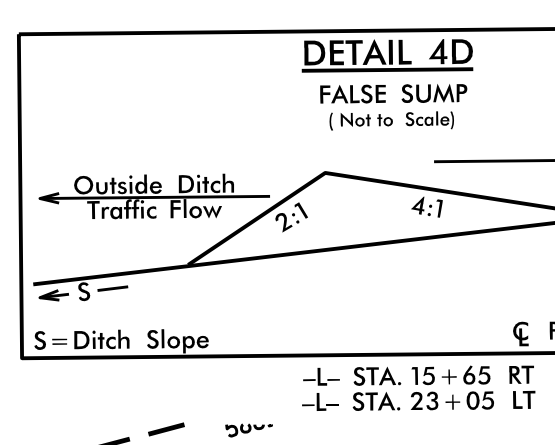
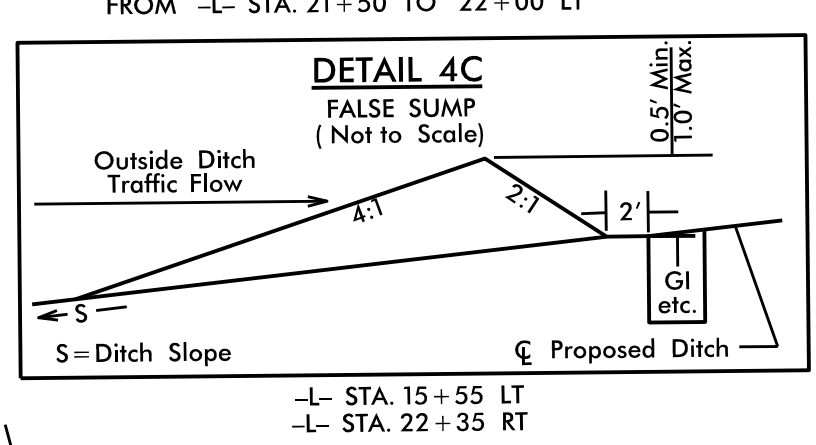
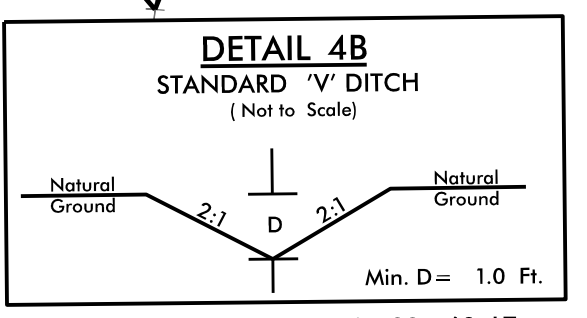
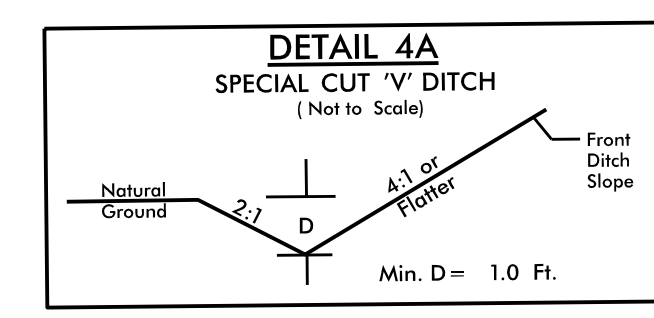
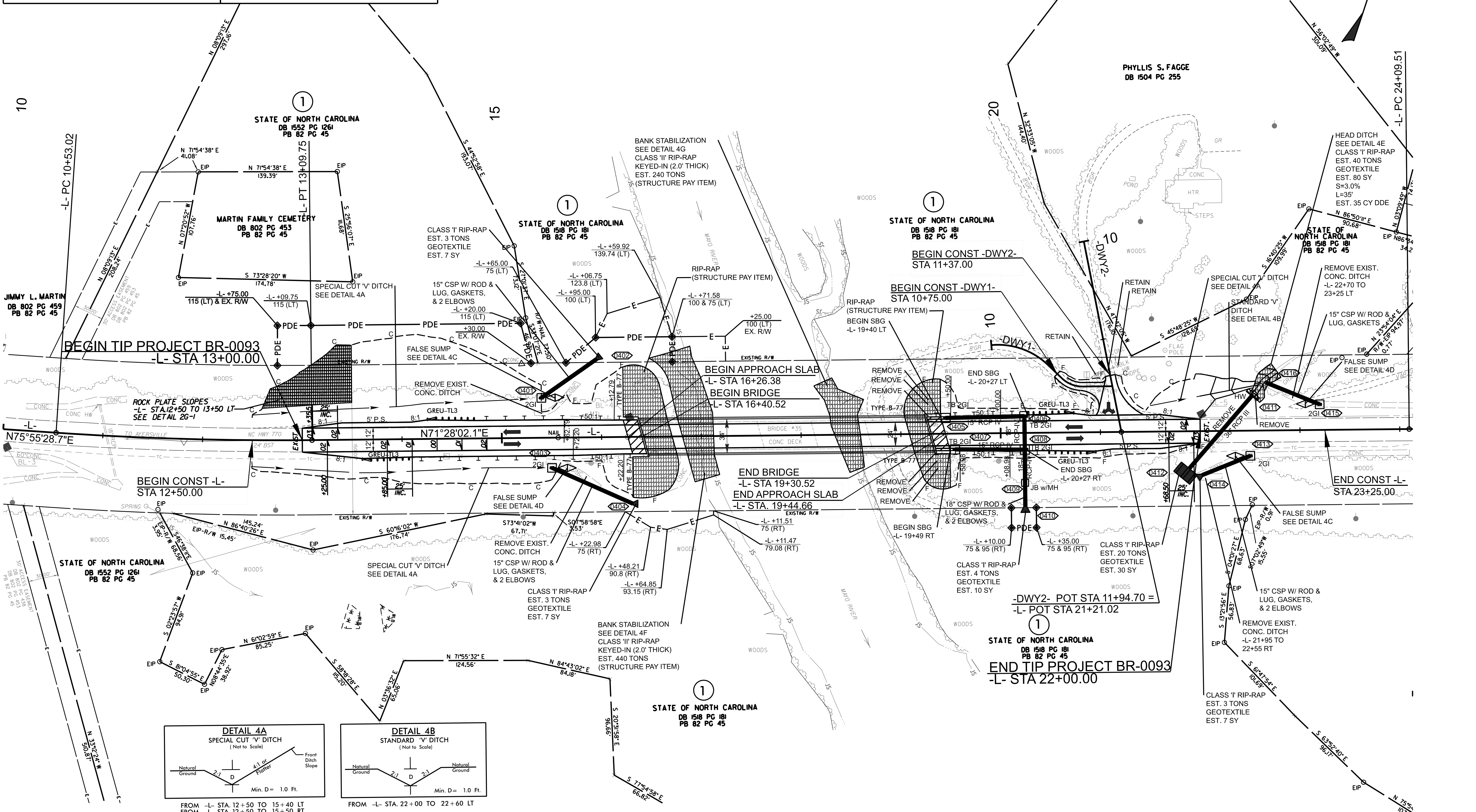


Documents: Benjamin J. Herring 04/03/2024



DOCUMENT NOT CONSIDERED FINAL UNLESS ALL SIGNATURES COMPLETED

CUR DATA -L-	CUR DATA -L-	CUR DATA -DWY1-	CUR DATA -DWY1-
Pic 11+81.45	Pic 25+24.26	Pic 10+32.84	Pic 10+93.44
$\Delta c = 04^{\circ}27'26.6''$ (LT)	$\Delta c = 03^{\circ}58'58.9''$ (RT)	$\Delta c = 49^{\circ}02'29.3''$ (RT)	$\Delta c = 44^{\circ}18'53.0''$ (LT)
D = 01°44'10.4"	D = 01°44'10.4"	D = 79°34'38.9"	D = 190°59'09.4"
Lc = 256.73	Lc = 229.41	Lc = 61.63	Lc = 23.20
Tc = 128.43	Tc = 114.75	Tc = 32.84	Tc = 12.22
R = 3,300	R = 3,300	R = 72	R = 30



BRIDGE APPROACH SLAB
 FOR STRUCTURE PLANS, SEE SHEETS S-1 THRU S-36
 FOR -L-, -DWY1-, -DWY2- PROFILES, SEE SHEET NO. 5
 FOR -DWY1-, -DWY2- DETAILS, SEE SHEET 2B-1

REVISIONS