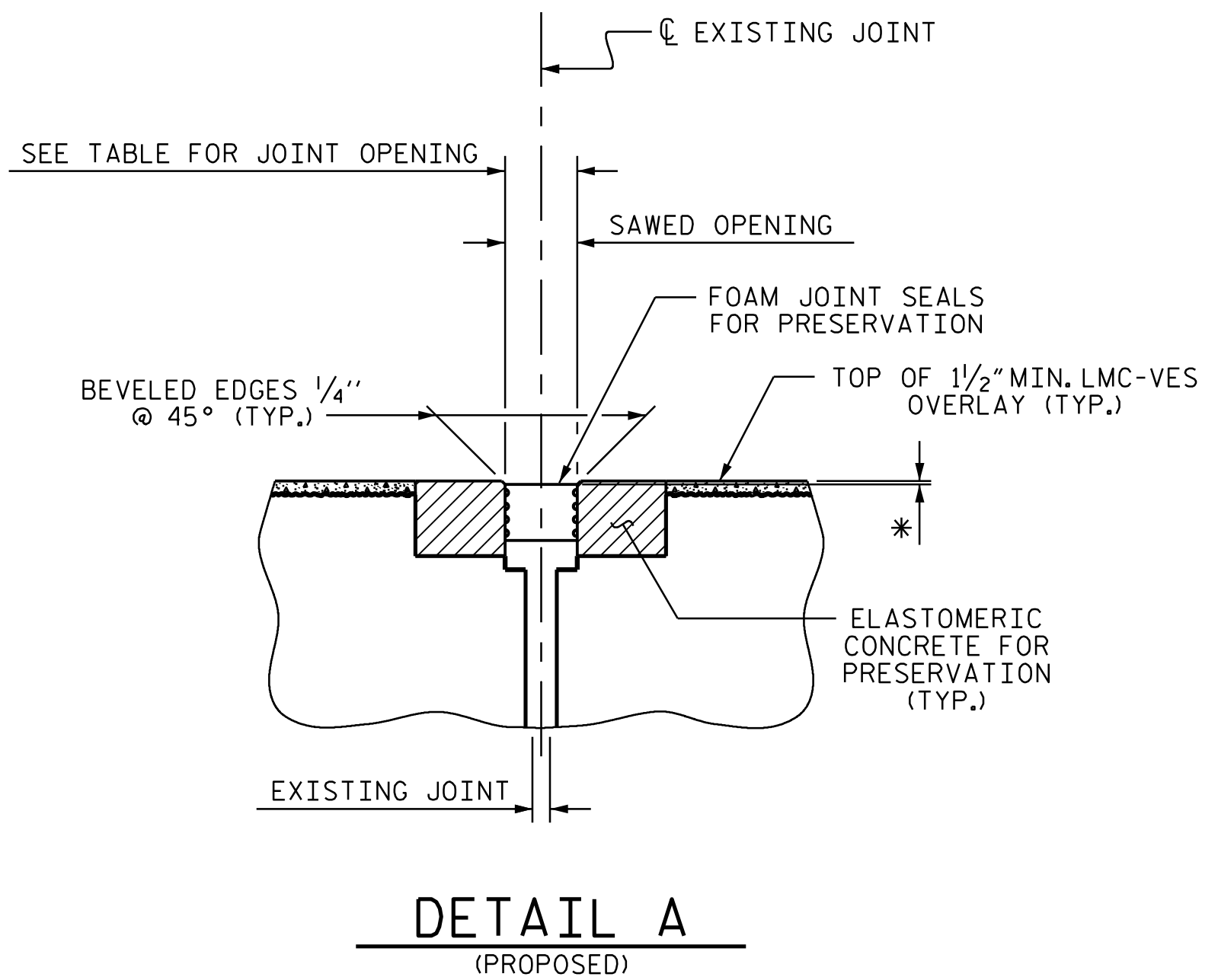
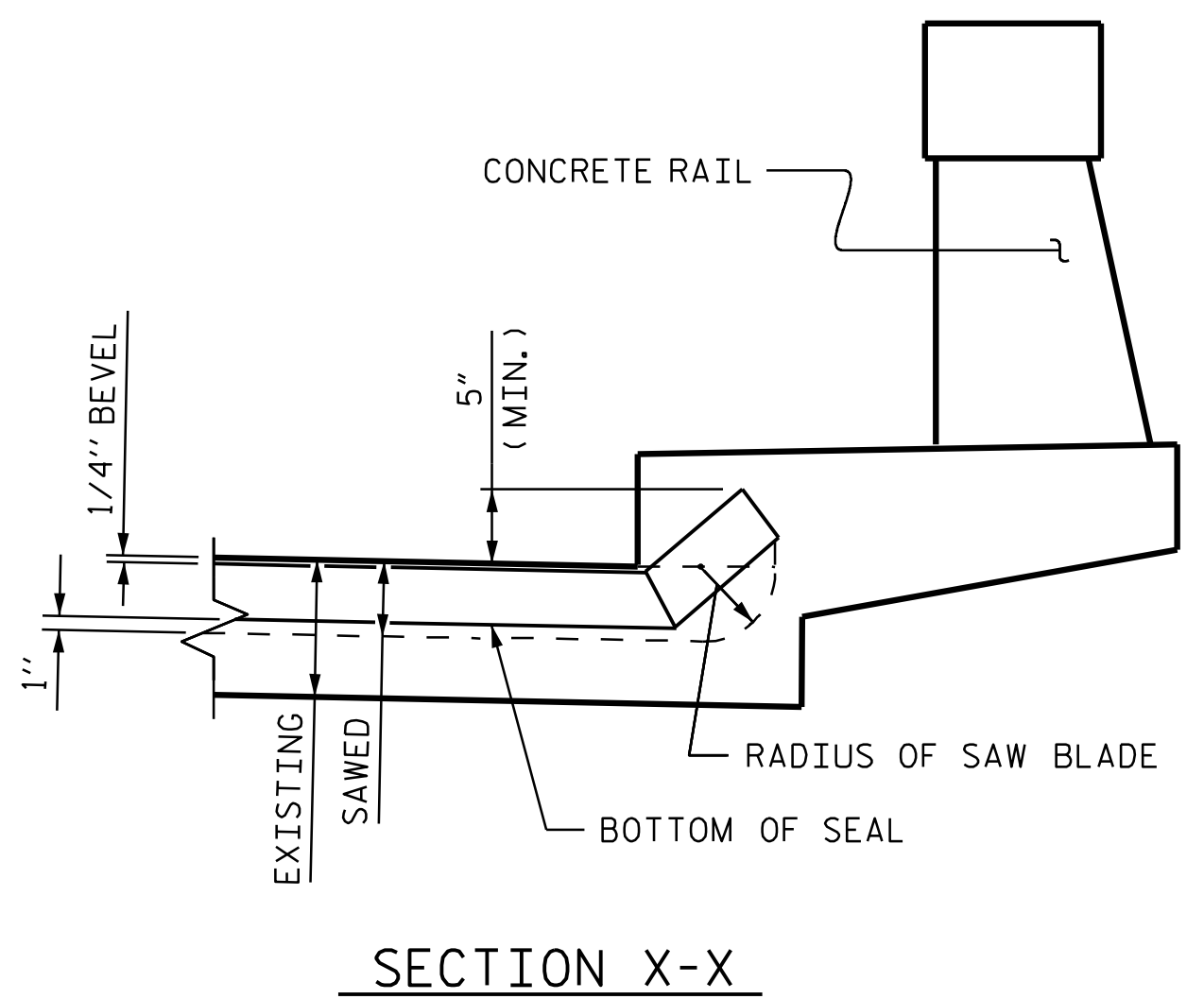
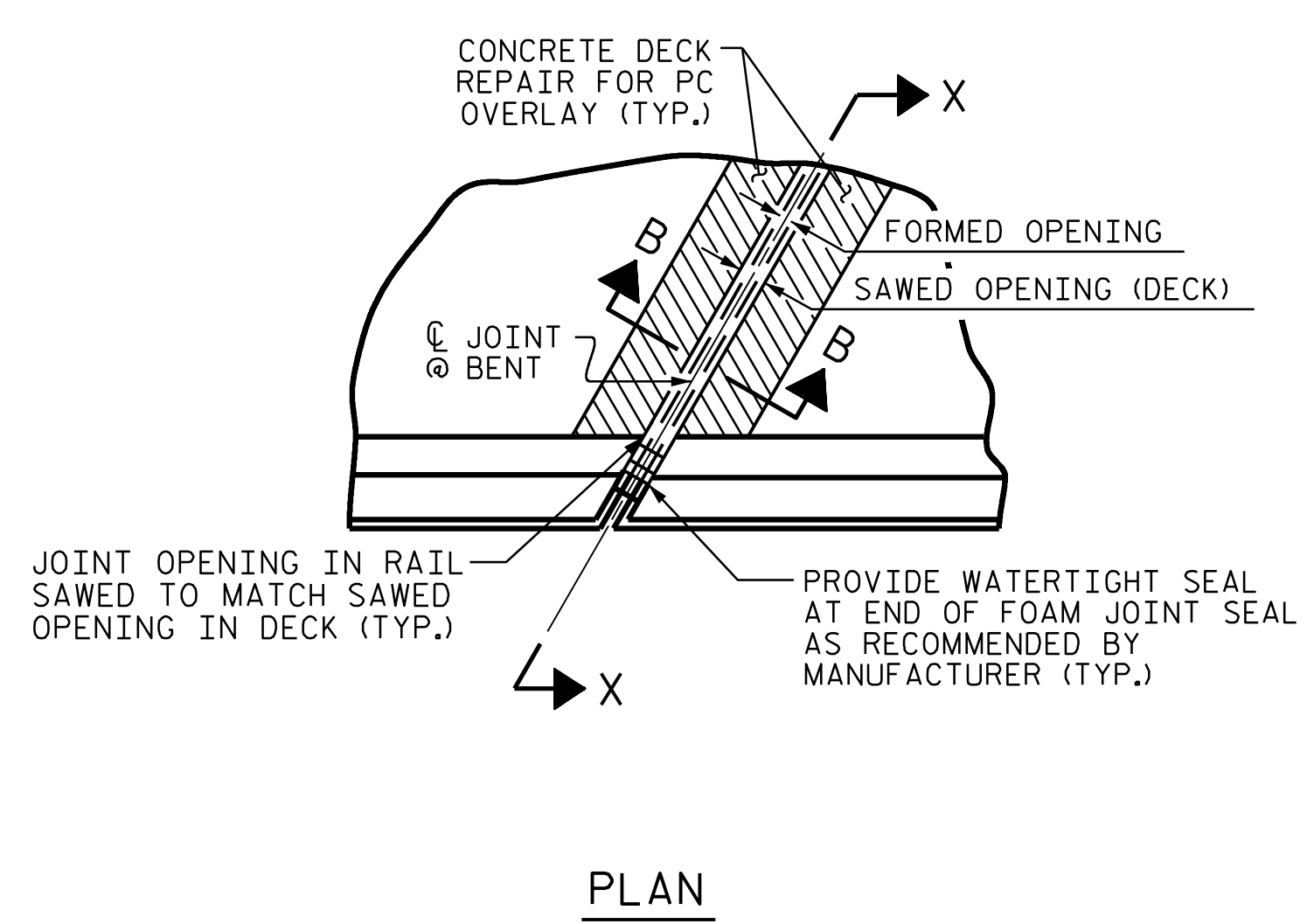


**JOINT INSTALLATION SEQUENCE AT BENTS (SECTION A-A)**



**NOTES**

THE CONTRACTOR SHALL FIELD VERIFY THE EXISTING JOINT OPENING PRIOR TO ORDER JOINT SEAL MATERIAL. IF THE ACTUAL JOINT OPENING VARIES FROM THE OPENING ALLOWED BY THE JOINT SEAL MATERIAL, NOTIFY THE ENGINEER. REVISION TO THE JOINT SEAL SIZE AND TYPE MIGHT BE NECESSARY.

THE CONTRACTOR WILL NOT BE PERMITTED TO FORM THE JOINTS FOR THE JOINT SEALS IN LIEU OF SAWING THE JOINT.

THE MANUFACTURER IS TO PROVIDE THE NOMINAL UNCOMPRESSED SEAL WIDTH OF THE FOAM JOINT SEAL BASED ON JOINT OPENINGS.

FOR FOAM JOINT SEALS FOR PRESERVATION, SEE SPECIAL PROVISIONS.

FOAM JOINT SEALS FOR PRESERVATION SHALL BE INSTALLED AS PER MANUFACTURER'S RECOMMENDATION.

THE INSTALLED FOAM JOINT SEALS FOR PRESERVATION SHALL BE WATER TIGHT.

FOR LOCATION OF SECTION A-A, SEE PLAN OF SPAN SHEETS.

FINAL SURFACE OF THE JOINT DEMOLITION AREA PRIOR TO PLACEMENT OF CONCRETE REPAIR MATERIAL SHOULD BE REASONABLY FLAT AND LEVEL. ENGINEER SHALL DETERMINE THE ACCEPTABILITY OF THE SURFACE PRIOR TO PLACEMENT OF REPAIR CONCRETE.

FOR ELASTOMERIC CONCRETE FOR PRESERVATION, SEE SPECIAL PROVISIONS.

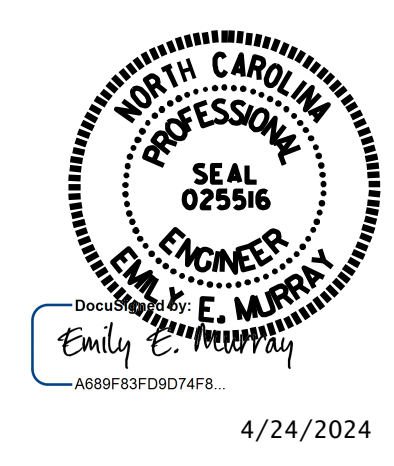
\* FOAM JOINT SEALS FOR PRESERVATION SHALL BE RECESSED AS PER MANUFACTURER'S RECOMMENDATIONS.

**JOINT SEAL DETAILS @ BENT**

JOINT REPAIR QUANTITY				
	FOAM JOINT SEALS FOR PRESERVATION		ELASTOMERIC CONCRETE FOR PRESERVATION	
	ESTIMATED (LIN. FT.)	ACTUAL (LIN. FT.)	ESTIMATED (CU. FT.)	ACTUAL (CU. FT.)
BENT 1	30.0		7.3	
BENT 2	30.0		7.3	
BENT 3	30.0		7.3	
BENT 4	30.0		7.3	
BENT 5	30.0		7.3	
BENT 6	30.0		7.3	
BENT 7	30.0		7.3	
BENT 8	30.0		7.3	
BENT 9	30.0		7.3	

SAWED JOINT OPENING TABLE				
LOCATION	SKEW ANGLE	PERPENDICULAR JOINT OPENING AT 45°	PERPENDICULAR JOINT OPENING AT 60°	PERPENDICULAR JOINT OPENING AT 90°
BENT 1	105°00'00"	1 5/16"	1 1/8"	1 11/16"
BENT 2	105°00'00"	1 7/16"	1 1/8"	1 5/8"
BENT 3	105°00'00"	1 7/16"	1 1/8"	1 5/8"
BENT 4	105°00'00"	1 7/16"	1 1/8"	1 5/8"
BENT 5	105°00'00"	1 7/16"	1 1/8"	1 5/8"
BENT 6	105°00'00"	1 7/16"	1 1/8"	1 5/8"
BENT 7	105°00'00"	1 7/16"	1 1/8"	1 5/8"
BENT 8	105°00'00"	1 7/16"	1 1/8"	1 5/8"
BENT 9	105°00'00"	1 7/16"	1 1/8"	1 5/8"

PROJECT NO. 15BPR.130  
MOORE COUNTY  
 BRIDGE NO: 620072



STATE OF NORTH CAROLINA  
 DEPARTMENT OF TRANSPORTATION  
 RALEIGH

**JOINT REPAIR DETAILS AT BENTS**

DRAWN BY : D. A. GLADDEN DATE : 5/23  
 CHECKED BY : B. H. BARNHILL DATE : 3/24

**VOLKERT**  
 5430 Wade Park Blvd, Suite 410  
 Raleigh, NC 27607  
 Tel. 919-854-0344 Fax. 919-854-0355  
 NC License No. F-0765

REVISIONS						SHEET NO.
NO.	BY:	DATE:	NO.	BY:	DATE:	S-131
1			3			TOTAL SHEETS
2			4			156