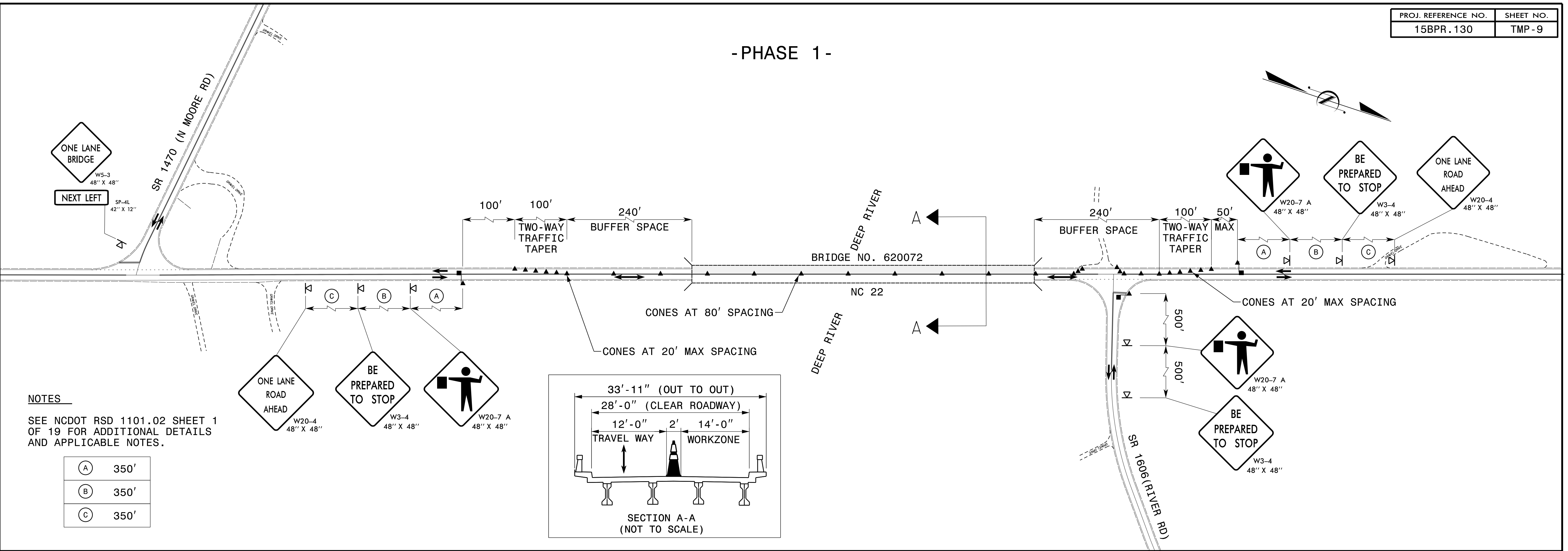


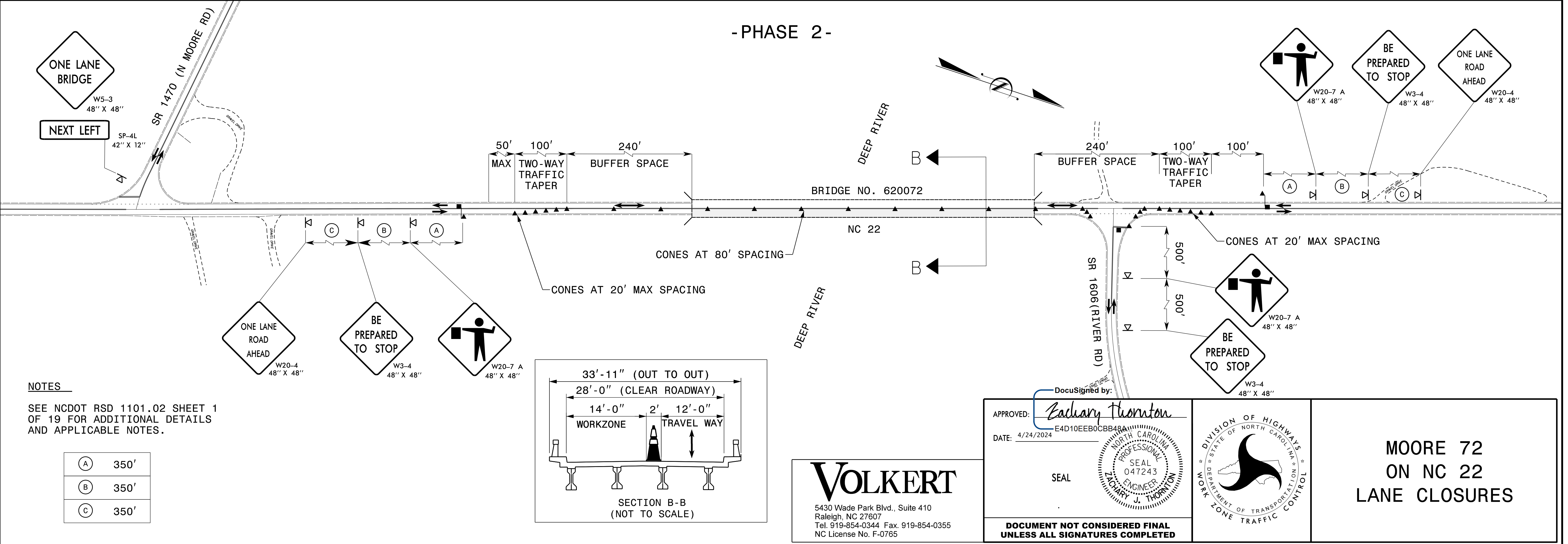
- PHASE 1 -



NOTES
SEE NCDOT RSD 1101.02 SHEET 1 OF 19 FOR ADDITIONAL DETAILS AND APPLICABLE NOTES.

| | |
|-----|------|
| (A) | 350' |
| (B) | 350' |
| (C) | 350' |

- PHASE 2 -



NOTES
SEE NCDOT RSD 1101.02 SHEET 1 OF 19 FOR ADDITIONAL DETAILS AND APPLICABLE NOTES.

| | |
|-----|------|
| (A) | 350' |
| (B) | 350' |
| (C) | 350' |

VOLKERT
5430 Wade Park Blvd., Suite 410
Raleigh, NC 27607
Tel. 919-854-0344 Fax. 919-854-0355
NC License No. F-0765

APPROVED: *Eadary Thornton*
DATE: 4/24/2024
SEAL
E4D10EEB0CBB48A
NORTH CAROLINA
PROFESSIONAL ENGINEER
SEAL 047243
TACHERY J. THORNTON

DIVISION OF HIGHWAYS
STATE OF NORTH CAROLINA
DEPARTMENT OF TRANSPORTATION
WORK ZONE TRAFFIC CONTROL

**MOORE 72
ON NC 22
LANE CLOSURES**